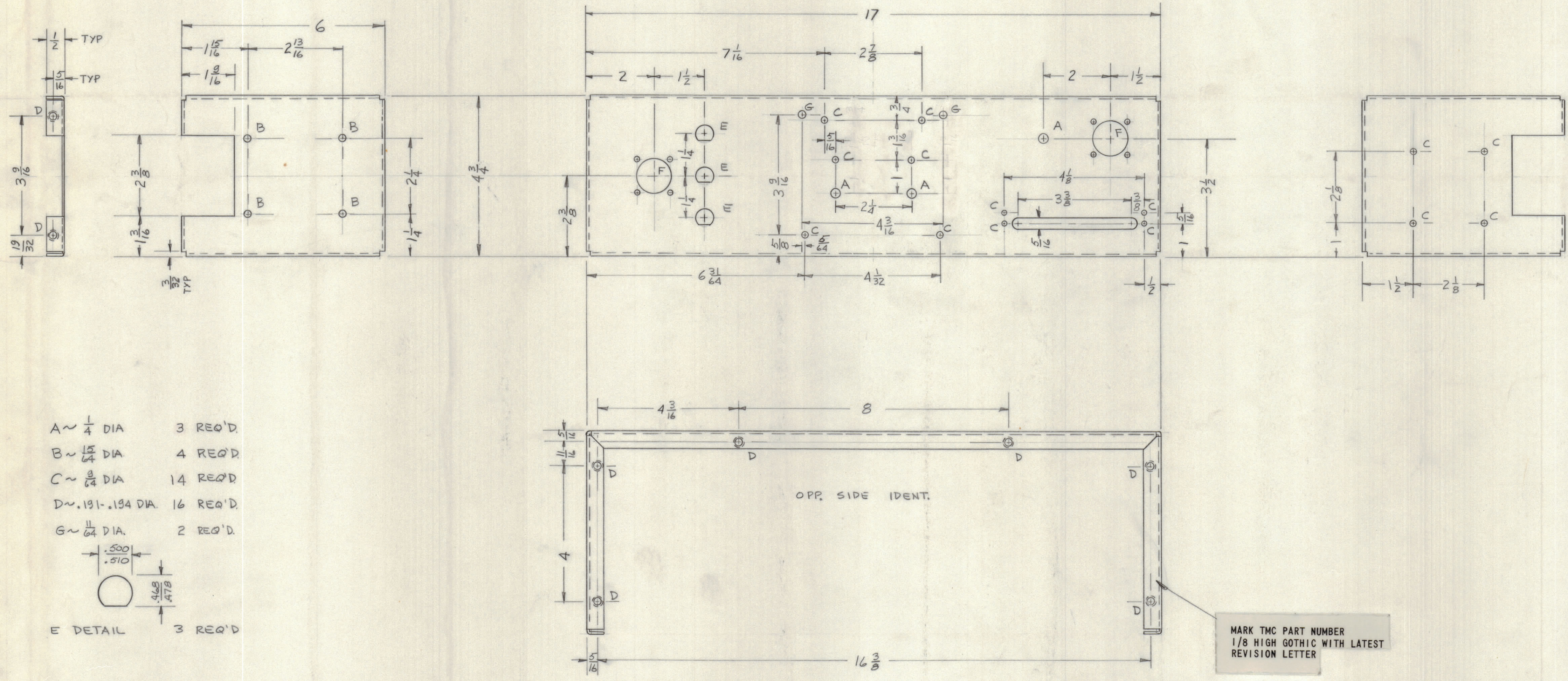
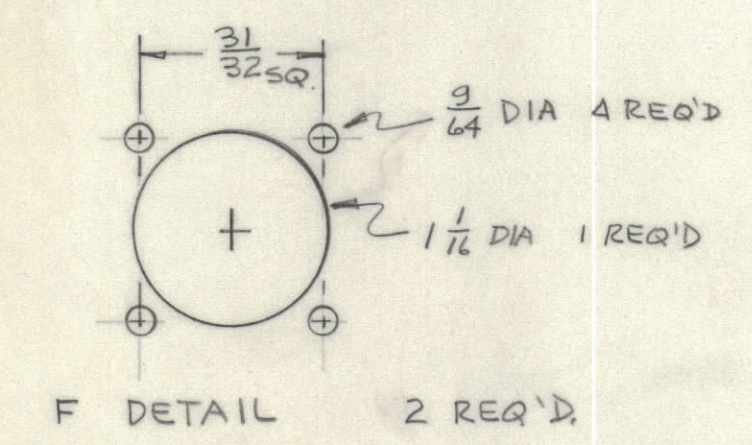


REVISIONS							
E.M.N.NO	DRAFT	CHKD	ZONE	LTR	DESCRIPTION	DATE	APPROVED
	W			D	ORIGINAL RELEASE FOR PRODUCTION	4/30/71	



- A ~ 1/4 DIA 3 REQ'D
 - B ~ 15/64 DIA 4 REQ'D
 - C ~ 3/8 DIA 14 REQ'D
 - D ~ .191-.194 DIA 16 REQ'D
 - G ~ 1/4 DIA 2 REQ'D
- E DETAIL 3 REQ'D



- UNLESS OTHERWISE SPECIFIED:
- USE MATERIAL THICKNESS FOR MAXIMUM RADIUS ON ALL BENDS.
 - ALL ANGULAR BENDS 90 DEGREES.
 - REMOVE ALL BURRS AND SHARP EDGES.
 - MOUNT INSERTS AFTER FINISHING.

MARK TMC PART NUMBER
1/8 HIGH GOTHIC WITH LATEST
REVISION LETTER

REF: LD 2487

QTY. REQ.	ITEM	PART NO.	DESCRIPTION	SYMBOL
16	1	NT 129-0632-4	NUT, PLN SWAGE	D

LIST OF MATERIAL

THE TECHNICAL MATERIEL CORP.
MAMARONECK, NEW YORK

FINAL APPROVAL	DATE
MECH. DES.	DATE
ELECT. DES.	DATE
CHECKED	DATE
DRAWN	DATE

UNLESS OTHERWISE SPECIFIED
DIMENSIONS ARE IN INCHES
AND INCLUDE CHEMICALLY APPLIED
OR PLATED FINISHES

TOLERANCES ON

DECIMALS	FRACTIONS
.X ± .05	± 1/64
.XX ± .01	ANGLES
.XXX ± .005	± 0° -30'

1	TPM-1K	BMA467
QTY / UNIT	MODEL USED ON	ASS'Y NO.
APPLICATION		
CODE		
<small>NOTICE TO PERSONS RECEIVING THIS DRAWING</small> <small>THE TECHNICAL MATERIEL CORPORATION claims proprietary right in the material disclosed hereon. This drawing is issued in confidence for engineering information only and may not be reproduced or used to manufacture anything shown hereon without permission from THE TECHNICAL MATERIEL CORPORATION to the user. This drawing is loaned for mutual assistance and is subject to recall at any time.</small>		

MATERIAL .064 ALUM
5052-H32

FINISH
S404 YEL IRID

SIZE	CODE IDENT NO.	DWG NO.	ISSUE
D	82679	MS6251	0
SCALE	SHEET		OF