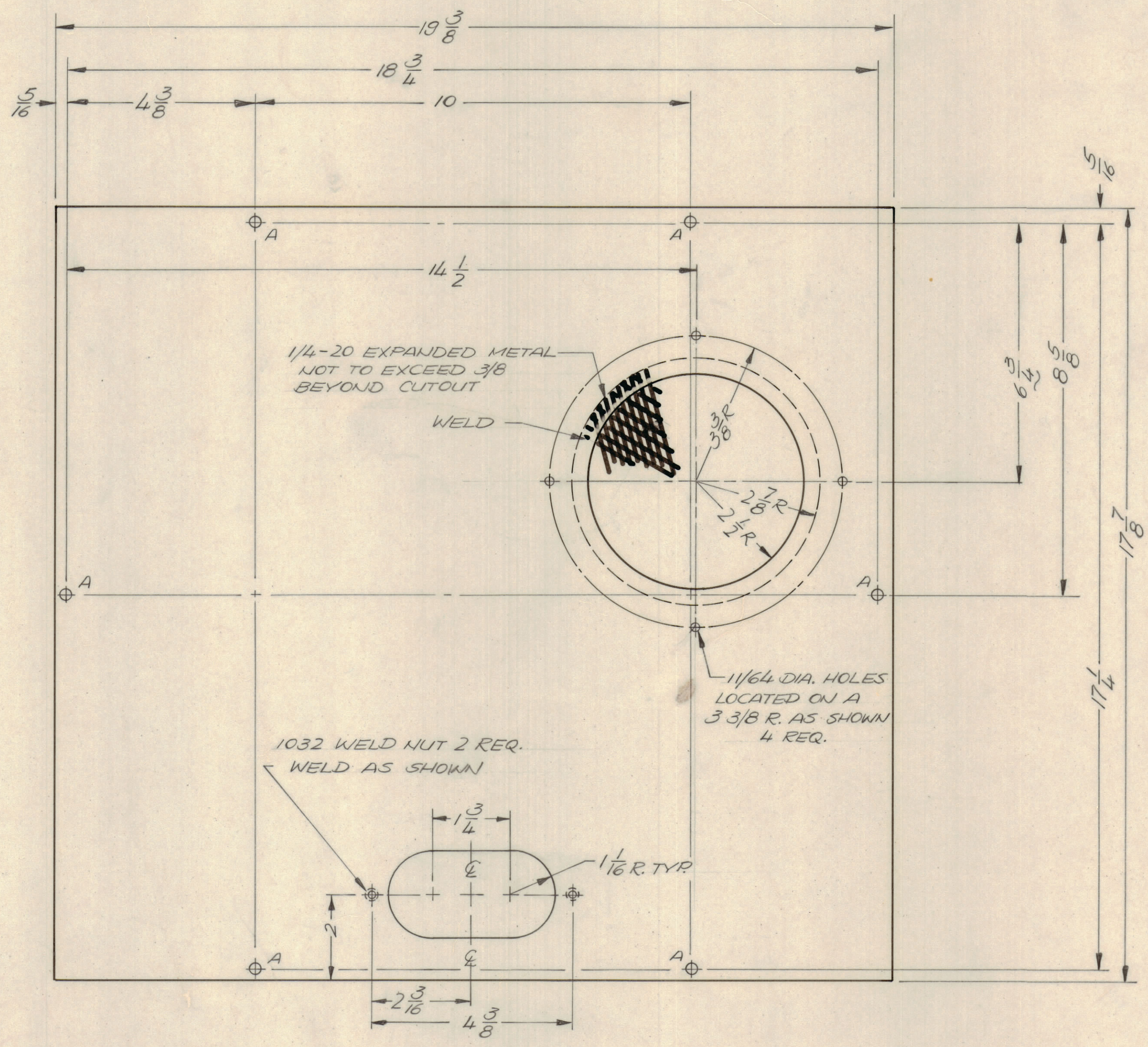
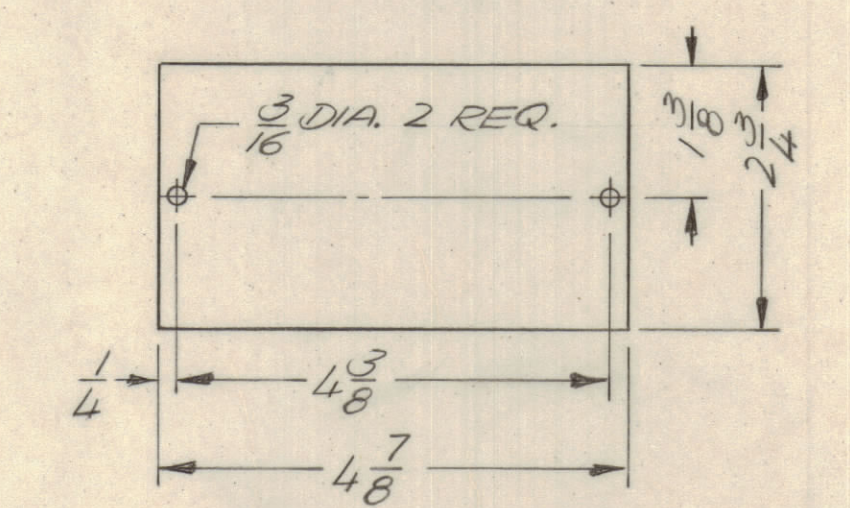


REVISIONS							
E.M.N.NO	DRAFT	CHKD	ZONE	LTR	DESCRIPTION	DATE	APPROVED
20818	GE	BN		A	ADDED SHEET 4	3-21-72	EP
21366	GDL			B	SEE SHEET 1	3-10-76	CL



HOLE DESCRIPTION REQ.
A — 15/64 DIA. — 6



MS 6232-4
TOP CABINET, XMTR EXHAUST, TLAM-1K

1 MS 6230		
QTY / UNIT	MODEL USED ON	ASSY NO.
APPLICATION		
CODE		
NOTICE TO PERSONS RECEIVING THIS DRAWING THE TECHNICAL MATERIEL CORPORATION claims proprietary right in the material disclosed hereon. This drawing is issued in confidence for engineering information only and may not be reproduced or used to manufacture anything shown herein without permission from THE TECHNICAL MATERIEL CORPORATION to the user. This drawing is loaned for mutual assistance and is subject to recall at any time.		

UNLESS OTHERWISE SPECIFIED DIMENSIONS ARE IN INCHES AND INCLUDE CHEMICALLY APPLIED OR PLATED FINISHES			
TOLERANCES ON		DATE	
DECIMALS	FRACTIONS	MECH. DES.	DATE
X ± .05	± 1/64	ELECT. DES.	DATE
XX ± .01	ANGLES	CHECKED	DATE
XXX ± .005	± 0° - 30°	DRAWN	DATE
MATERIAL		3/2/72	
SEE SHEET 1			
FINISH			
SEE SHEET 1			

QTY. REQ.	ITEM	PART NO.	DESCRIPTION	SYMBOL
F.B. LIST OF MATERIAL				
FINAL APPROVAL <i>BN</i> DATE 2/1/72				
MECH. DES. <i>BN</i> DATE 2/1/72				
ELECT. DES. <i>BN</i> DATE 2/1/72				
CHECKED <i>BN</i> DATE 2/1/72				
DRAWN <i>GE</i> DATE 3/2/72				
MATERIAL			THE TECHNICAL MATERIEL CORP. MAMARONECK, NEW YORK	
FINISH			(CABINET ELECTRICAL)	
			TOP, CABINET	
SIZE	CODE	IDENT NO.	DWG NO.	ISSUE
D	82679	MS 6232		B
SCALE: NTS				SHEET 4 OF 5