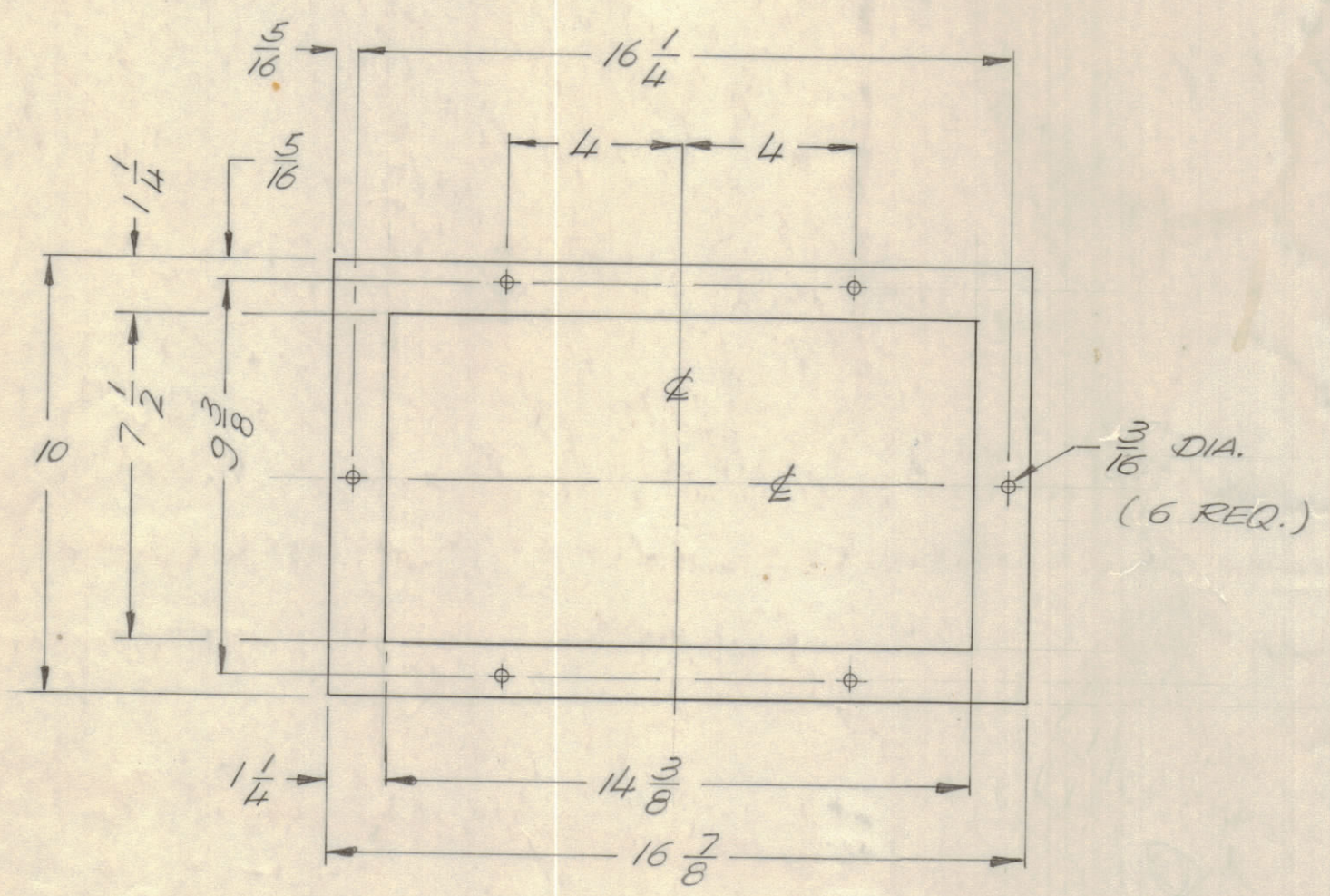


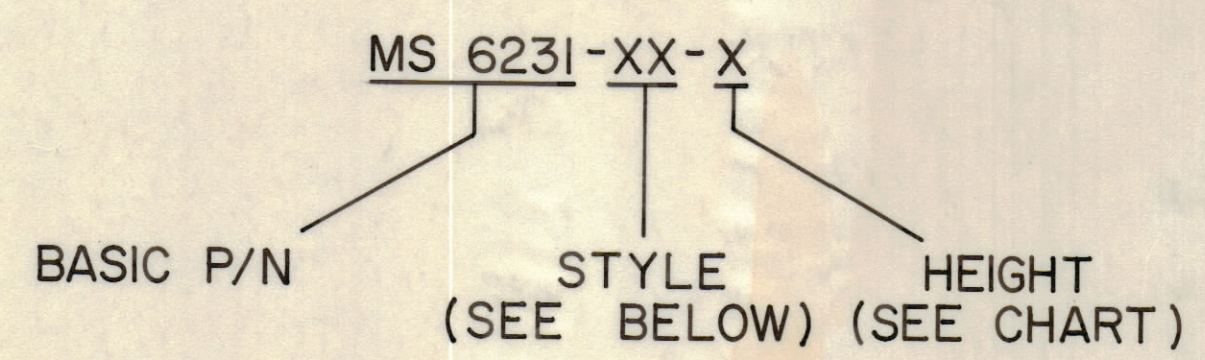
DOOR	CABINET USED ON MS 6230	OVERALL HEIGHT (A)	DOOR MOUNTING DIMENSION (B)
MS 6231 XX -1	CAB 40	43 5/16	41 3/8
MS 6231 XX -2	CAB 50	55 9/16	53 5/8
MS 6231 XX -3	CAB 60	67 13/16	65 7/8

REVISIONS					DATE	APPROVED
E.M.N.O	DRAFT	CHKD	ZONE	LTR		
					10/21/71	



FILTER COVER -- TO BE SUPPLIED WITH ALL WA STYLE DOORS FOR SPARE PARTS USE ONLY, PART NO. IS MS 6235-1  
BLANK MS 6235-2

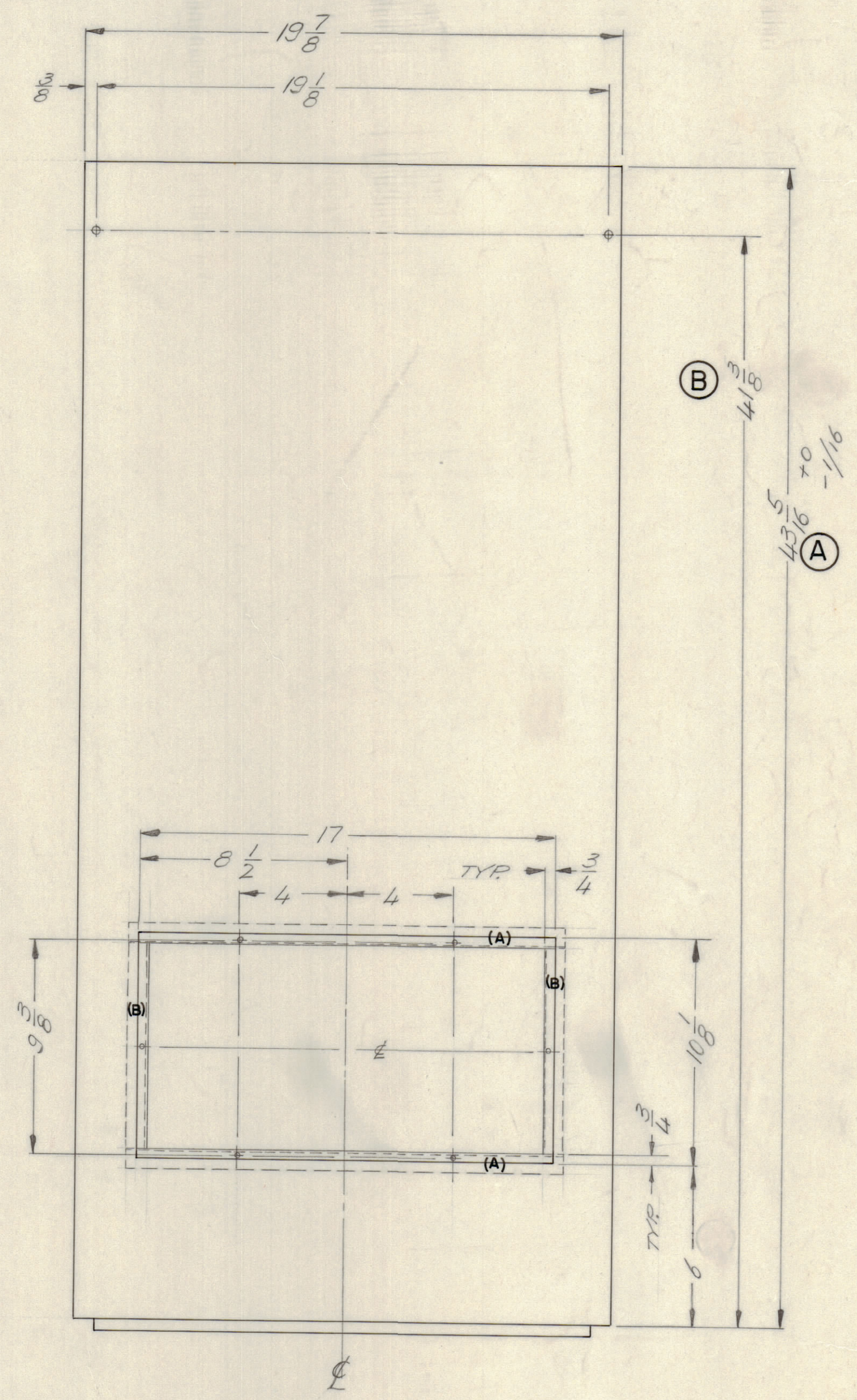
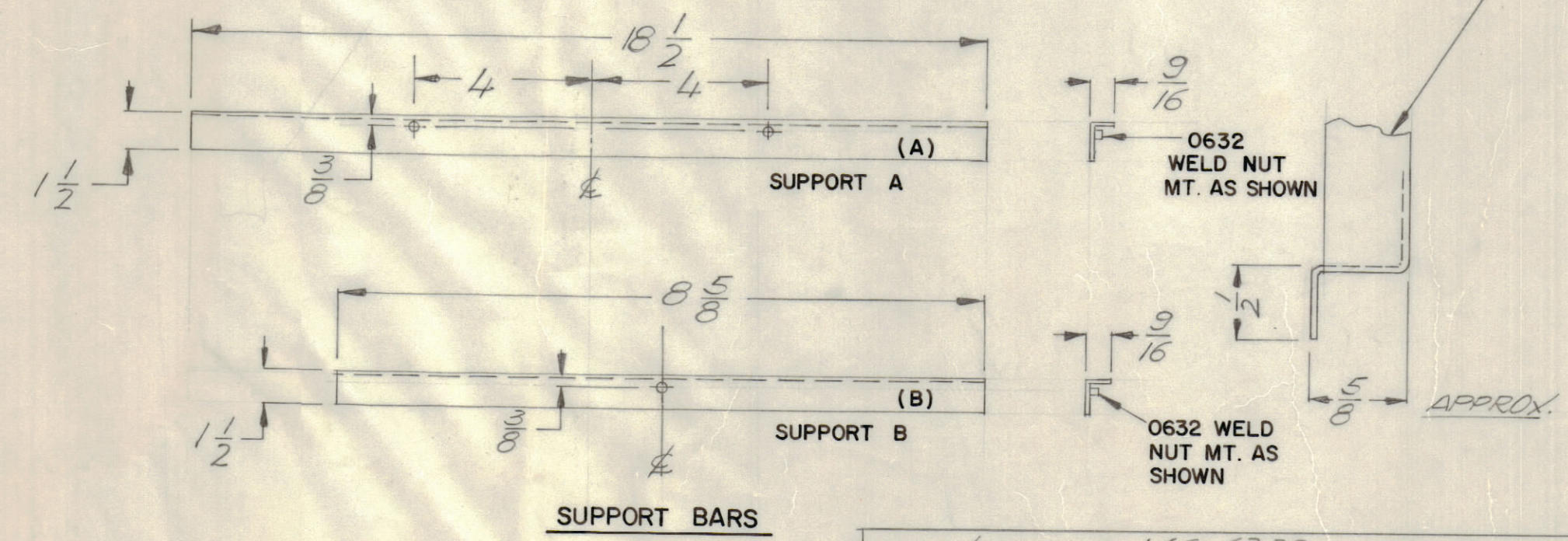
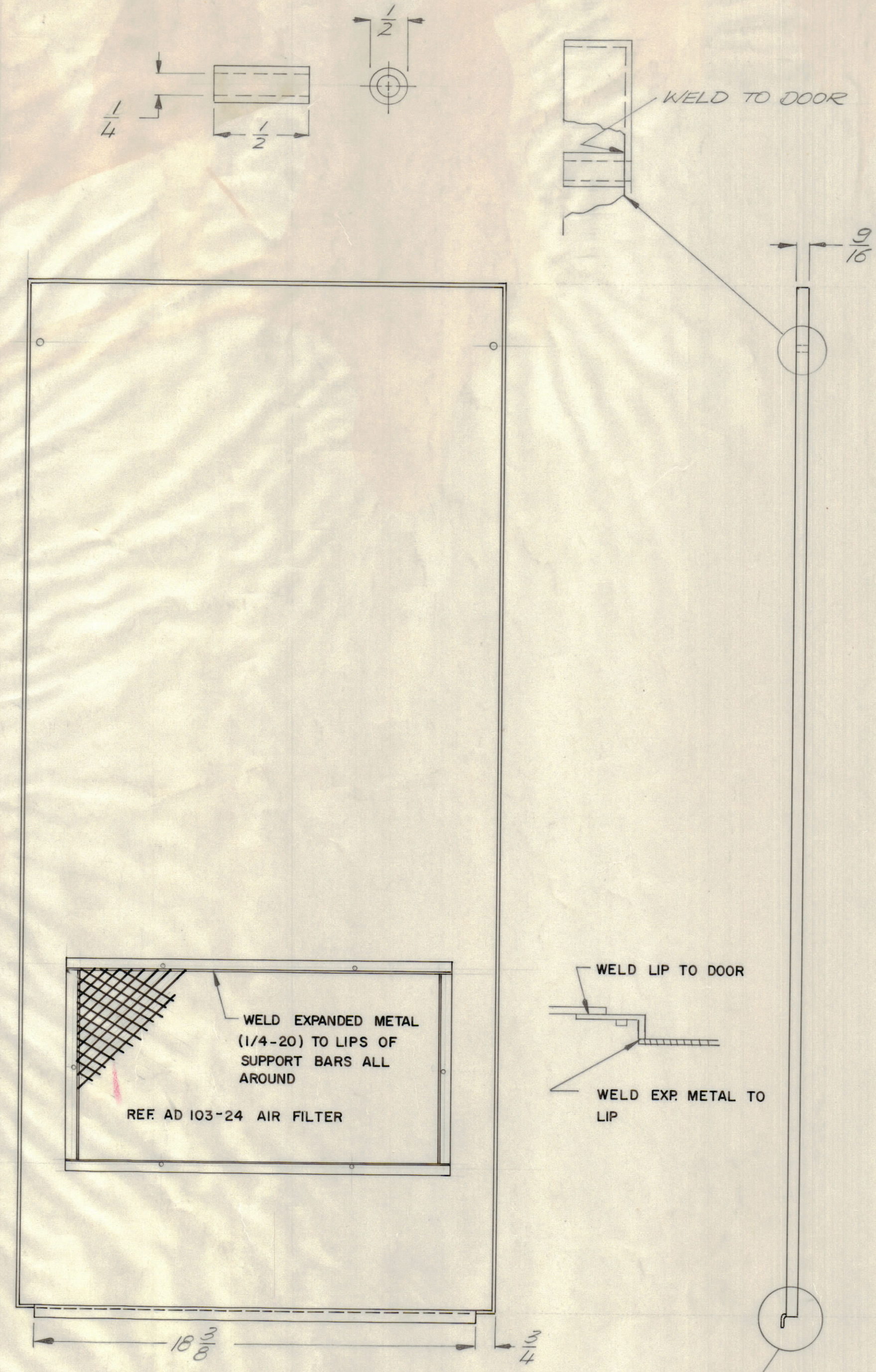
PART NO. TO BE IN THE FOLLOWING FORM



NOTE SPECIFY EITHER -- STYLE-NA PLAIN DOOR  
STYLE-WA DOOR WITH CUTOUT & FILTER  
(-1 & STYLE WA SHOWN)  
NA=NO AIR WA=WITH AIR

FINISH NOTES-S520 BLUE GRAY TEXTURED VINYL PAINT

FABRICATION NOTES - MATERIAL 1/16 STEEL UNLESS OTHERWISE SPECIFIED



NOTE: ALL HEIGHT DIMENSIONS SHOWN FOR MS 6231 XX-1  
SEE CHART FOR VARYING DIMENSIONS FOR OTHER CABINETS

MS 6230		
QTY / UNIT	MODEL USED ON	ASS'Y NO.
APPLICATION		
CODE		
NOTICE TO PERSONS RECEIVING THIS DRAWING		
THE TECHNICAL MATERIEL CORPORATION claims proprietary right in the material disclosed hereon. This drawing is issued in confidence for engineering information only and may not be reproduced or used to manufacture anything shown hereon without permission from THE TECHNICAL MATERIEL CORPORATION to the user. This drawing is loaned for mutual assistance and is subject to recall at any time.		

QTY. REQ.	ITEM	PART NO.	DESCRIPTION	SYMBOL
	F. BUDETTI LIST OF MATERIAL			
	FINAL APPROVAL	DATE	THE TECHNICAL MATERIEL CORP.	
	MECH. DES.	DATE	MAMARONECK, NEW YORK	
	ELECT. DES.	DATE	DOOR, REAR	
	CHECKED	DATE		
	DRAWN	DATE		
MATERIAL		AS NOTED		
FINISH		AS NOTED		

QTY. REQ.	ITEM	PART NO.	DESCRIPTION	SYMBOL
	F. BUDETTI LIST OF MATERIAL			
	FINAL APPROVAL	DATE	THE TECHNICAL MATERIEL CORP.	
	MECH. DES.	DATE	MAMARONECK, NEW YORK	
	ELECT. DES.	DATE	DOOR, REAR	
	CHECKED	DATE		
	DRAWN	DATE		
MATERIAL		AS NOTED		
FINISH		AS NOTED		
SIZE	CODE IDENT NO.	DWG NO.	ISSUE	
D	82679	MS 6231	1	
SCALE		AS NOTED		
SHEET		OF		