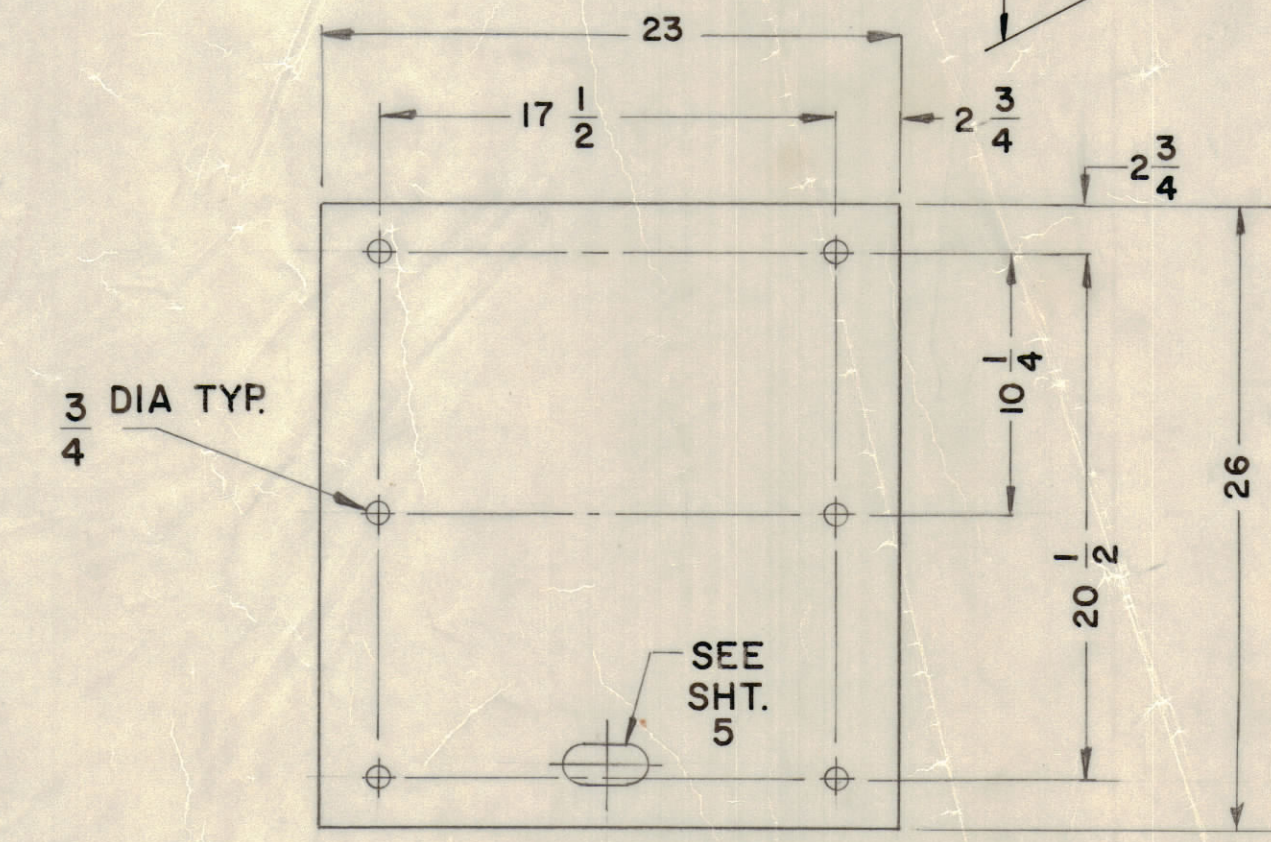
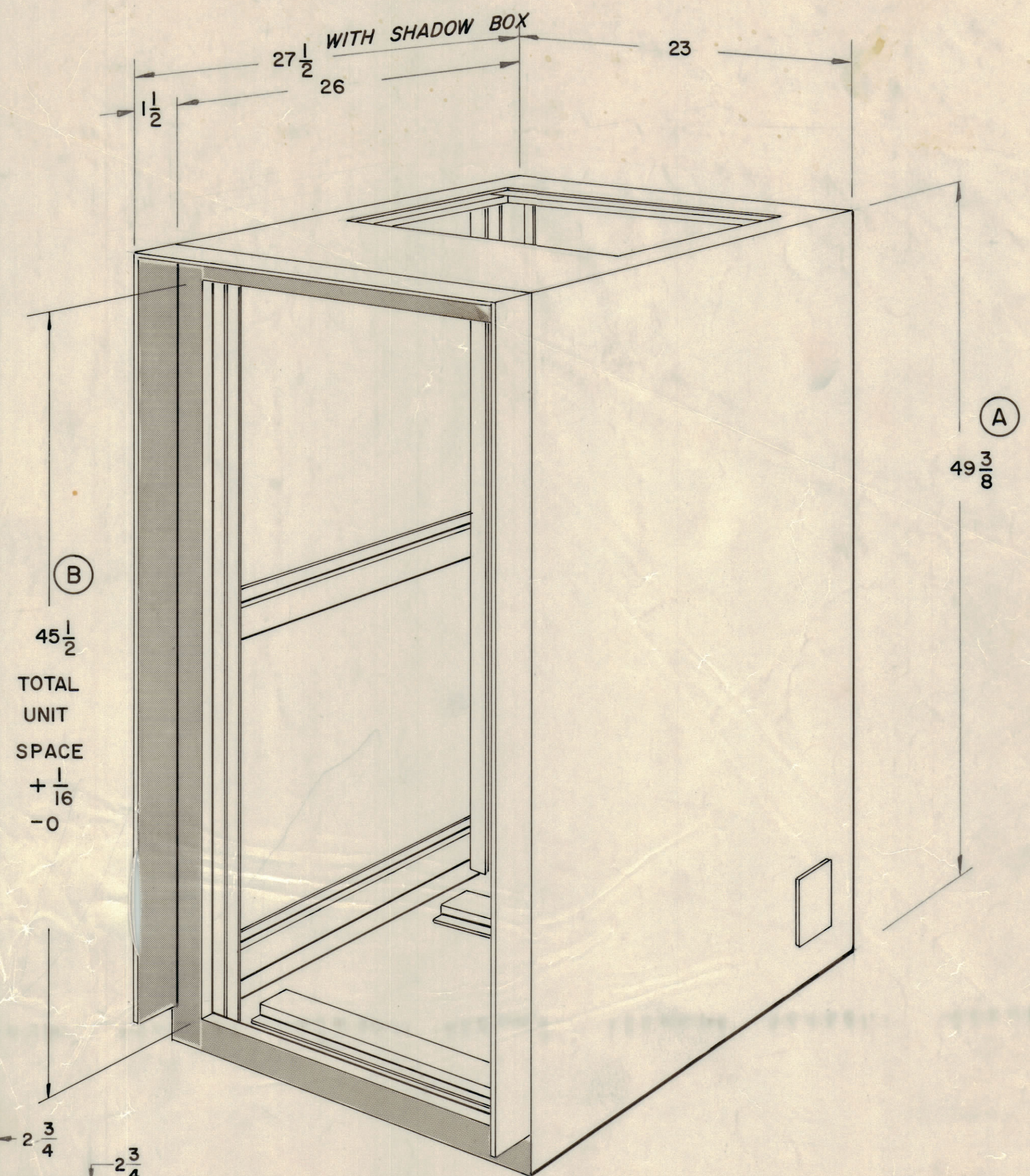


PART NUMBER	(A) OVERALL HEIGHT	(B) UNIT SPACE	(C) REAR DOOR OPENING	(D) REAR DOOR MOUNTING	(E) SIDE RIB SPACING	CABINET USED ON
MS 6230 -1	49 3/8	45 1/2	43 3/8	41 3/8	AS SHOWN SINGLE CENTER RIB ONLY	CAB 40
MS6230 -2	61 5/8	57 3/4	55 5/8	53 5/8	18	CAB 50
MS 6230 -3	73 7/8	70	67 7/8	65 7/8	23	CAB 60
MS 6230-1S	49 3/8	45 1/2	43 3/8	41 3/8	AS SHOWN SINGLE CENTER RIB ONLY	CAB 40-S SEE SPECIAL NOTE

REVISIONS							
E.M.N.O.	DRAFT	CHKD	ZONE	LTR	DESCRIPTION	DATE	APPROVED
21220	H.D.	G		A	ORIGINAL RELEASE FOR PRODUCTION	10/14/71	
21336	GDL	G		B	MS6230-1S ADDED; SHEET 8 ADDED	4-30-75	
					SEE SHEET 8	12-13-75	

NOTE: ALL HEIGHT DIMENSIONS SHOWN FOR MS 6230-1  
SEE CHART FOR VARYING DIMENSIONS FOR OTHER CABINETS



SPECIAL NOTE:  
SHEET 6 OF MS6230 NOT USED.  
TOP TO BE MANUFACTURED  
USING SHEET 8.

FINISH NOTES  
S520 BLUE GRAY TEXTURED VINYL PAINT.

FABRICATION NOTES  
MATERIAL - 1/16 STEEL UNLESS OTHERWISE  
SPECIFIED

TOLERANCE SPECIFICATIONS (ALL SHEETS)  
OVERALL STRUCTURAL TOL.  $\pm 1/16$   
HOLE LOCATIONS  $\pm 1/64$  C-C  
OTHER TOLERANCES AS SPECIFIED  
NOTE  
DO NOT ACCUMULATE TOL. ON CHAIN DIMENSIONS

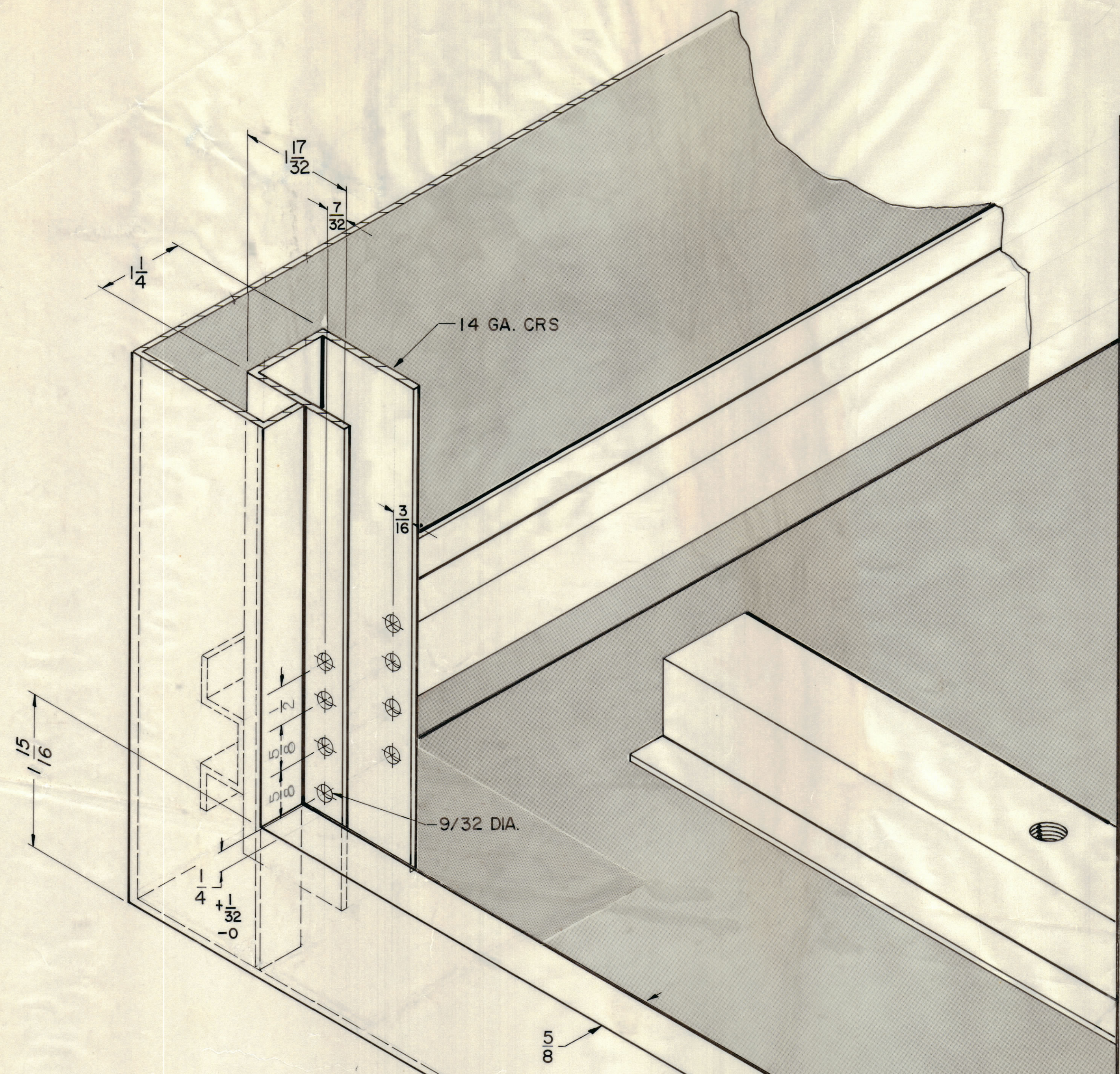
CAB - 40, 50, 60		
QTY / UNIT	MODEL USED ON	ASSY NO.
	APPLICATION	
	CODE	
<small>NOTICE TO PERSONS RECEIVING THIS DRAWING</small> <small>THE TECHNICAL MATERIEL CORPORATION claims proprietary right in the material disclosed hereon. This drawing is issued in confidence for engineering information only and may not be reproduced or used to manufacture anything shown hereon without permission from THE TECHNICAL MATERIEL CORPORATION to the user. This drawing is loaned for mutual assistance and is subject to recall at any time.</small>		

QTY. REQ.	ITEM	PART NO.	DESCRIPTION	SYMBOL
E. BUDETTI LIST OF MATERIAL				
	FINAL APPROVAL	DATE	THE TECHNICAL MATERIEL CORP.	
	MECH. DES.	DATE	MAMARONECK, NEW YORK	
	ELECT. DES.	DATE	CABINET, ELECTRICAL EQUIP	
	CHECKED	DATE		
	DRAWN	DATE		
	MATERIAL	AS NOTED		
	FINISH	AS NOTED		

SIZE	CODE	IDENT NO.	DWG NO.	ISSUE
D	82679	MS 6230	B	

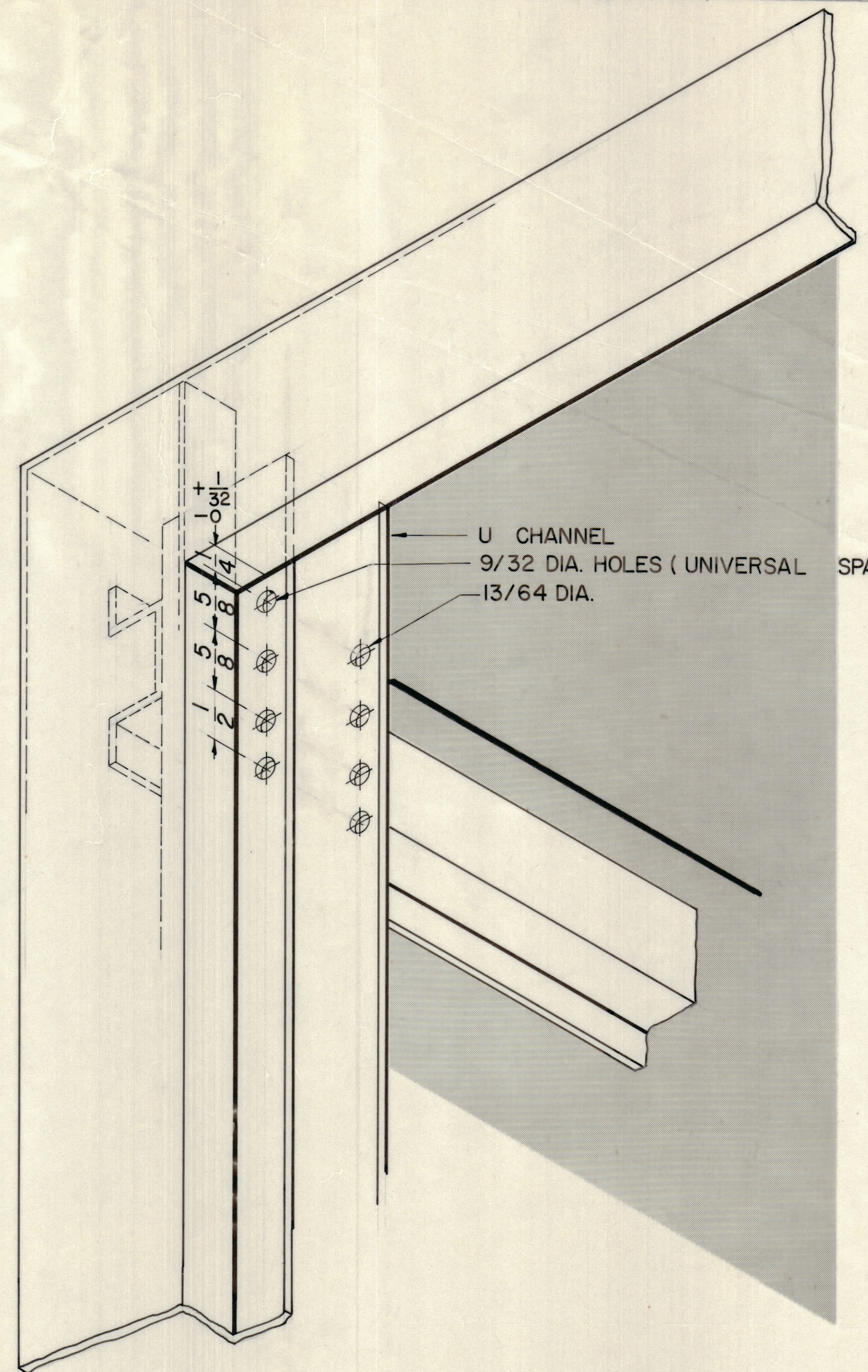


REVISIONS							
E.M.N.O	DRAFT	CHKD	ZONE	LTR	DESCRIPTION	DATE	APPROVED
	0			0	ORIGINAL RELEASE FOR PRODUCTION	10/17/71	
21220	3.D.			A	SEE SHEET ONE	4-30-75	
21336	3.D.			B	SEE SHEET 2	13-12-75	



FRONT LOWER LEFT CORNER

9/32 & 13/64 DIA. MEMBER HOLES TO BE ON A HORIZONTAL PLANE WITHIN 1/64  
 LEFT & RIGHT MEMBER HOLES TO BE ON A HORIZONTAL PLAIN WITHIN 1/64  
 FRONT & REAR MEMBER HOLES TO BE ON A HORIZONTAL PLAIN WITHIN 1/32

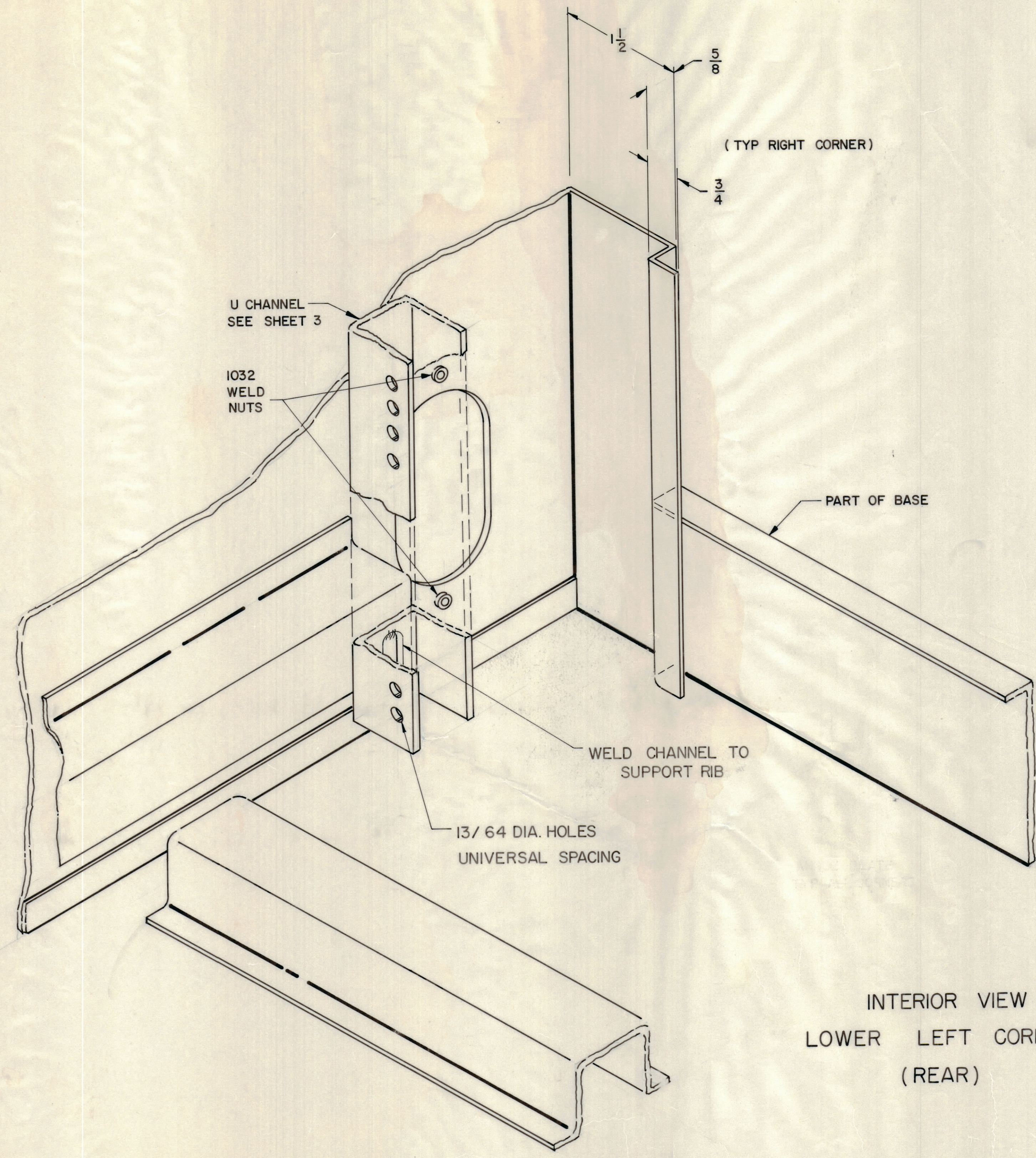


TOP LEFT CORNER

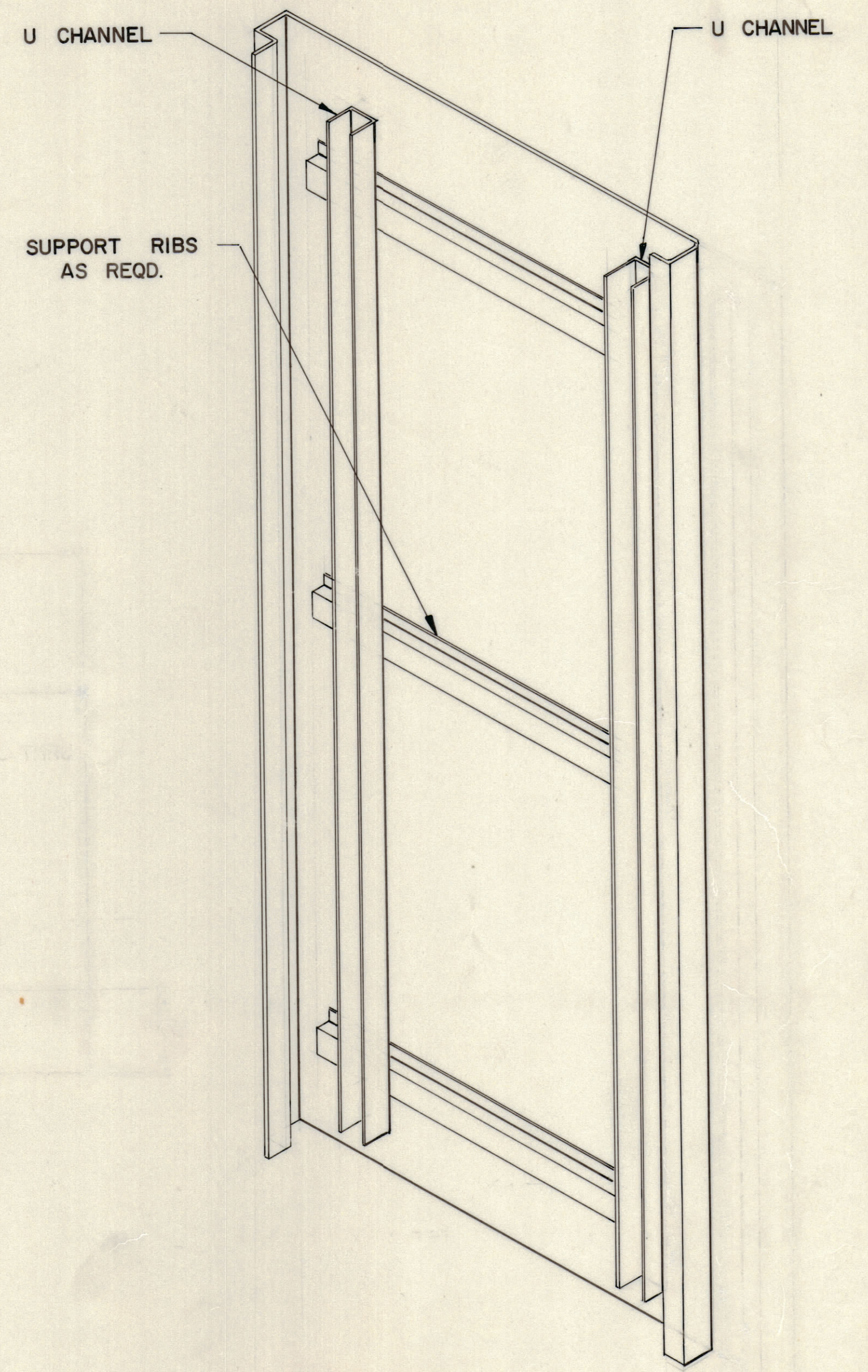
CAB-40.50.60		
QTY / UNIT	MODEL USED ON	ASS'Y NO.
APPLICATION		
CODE		
<small>NOTICE TO PERSONS RECEIVING THIS DRAWING</small> <small>THE TECHNICAL MATERIEL CORPORATION claims proprietary right in the material disclosed herein. This drawing is issued in confidence for engineering information only and may not be reproduced or used to manufacture anything shown herein without permission from THE TECHNICAL MATERIEL CORPORATION to the user. This drawing is loaned for mutual assistance and is subject to recall at any time.</small>		

QTY. REQ.	ITEM	PART NO.	DESCRIPTION	SYMBOL
F. BUDETTI, PE.				
LIST OF MATERIAL				
UNLESS OTHERWISE SPECIFIED DIMENSIONS ARE IN INCHES AND INCLUDE CHEMICALLY APPLIED OR PLATED FINISHES TOLERANCES ON DECIMALS .X ± .05 FRACTIONS ± 1/64 ANGLES ± 0° -30' MATERIAL SEE SHEET 1 FINISH SEE SHEET 1				
FINAL APPROVAL [Signature] DATE 23/4/71 MECH. DES. [Signature] DATE 23/4/71 ELECT. DES. [Signature] DATE CHECKED DATE DRAWN G. EVANGELIST DATE 7/7/71			<b>THE TECHNICAL MATERIEL CORP.</b> MAMARONECK, NEW YORK <b>CORNER BENDS</b> <b>CABINET, ELECTRICAL</b> <b>EQUIP</b>	
SIZE D		CODE IDENT NO. 82679	DWG NO. MS 6230	ISSUE B
SCALE HTS				SHEET 3 OF 8

REVISIONS						
E.M.N.NO	DRAFT	CHKD	ZONE	LTR	DESCRIPTION	DATE
21220	W.D.				ORIGINAL RELEASE FOR PRODUCTION	10/1/71
21336	G.D.L.			A	SEE SHEET ONE	4-30-75
				B	SEE SHEET 8	12-13-75



INTERIOR VIEW  
LOWER LEFT CORNER  
(REAR)



SIDE SKIN  
AS SHOWN BEFORE  
ASSEMBLY  
SEE SHEET 3 FOR CORNER DETAILS

CAB-40, 50, 60		
QTY / UNIT	MODEL USED ON	ASS'Y NO.
APPLICATION		
CODE		
<small>NOTICE TO PERSONS RECEIVING THIS DRAWING</small> <small>THE TECHNICAL MATERIEL CORPORATION claims proprietary right in the material disclosed hereon. This drawing is issued in confidence for engineering information only and may not be reproduced or used to manufacture anything shown hereon without permission from THE TECHNICAL MATERIEL CORPORATION to the user. This drawing is loaned for mutual assistance and is subject to recall at any time.</small>		

UNLESS OTHERWISE SPECIFIED  
DIMENSIONS ARE IN INCHES  
AND INCLUDE CHEMICALLY APPLIED  
OR PLATED FINISHES

TOLERANCES ON

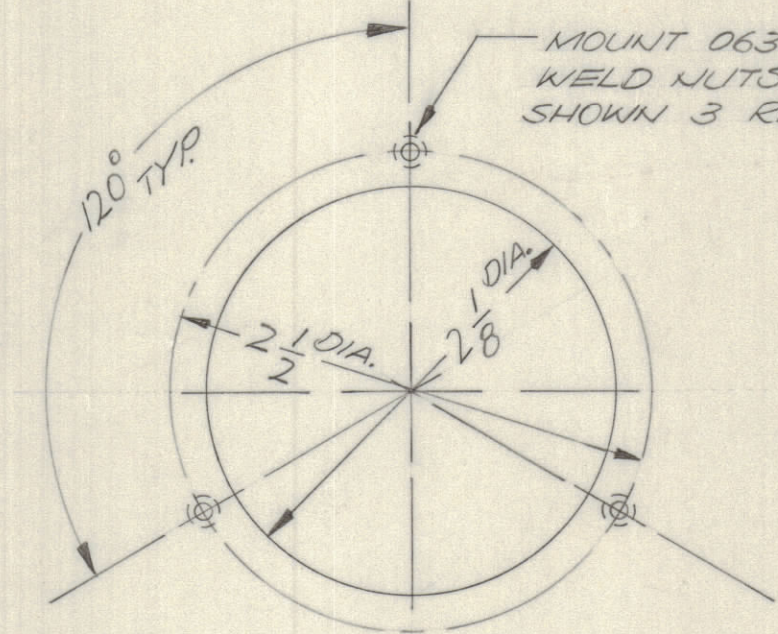
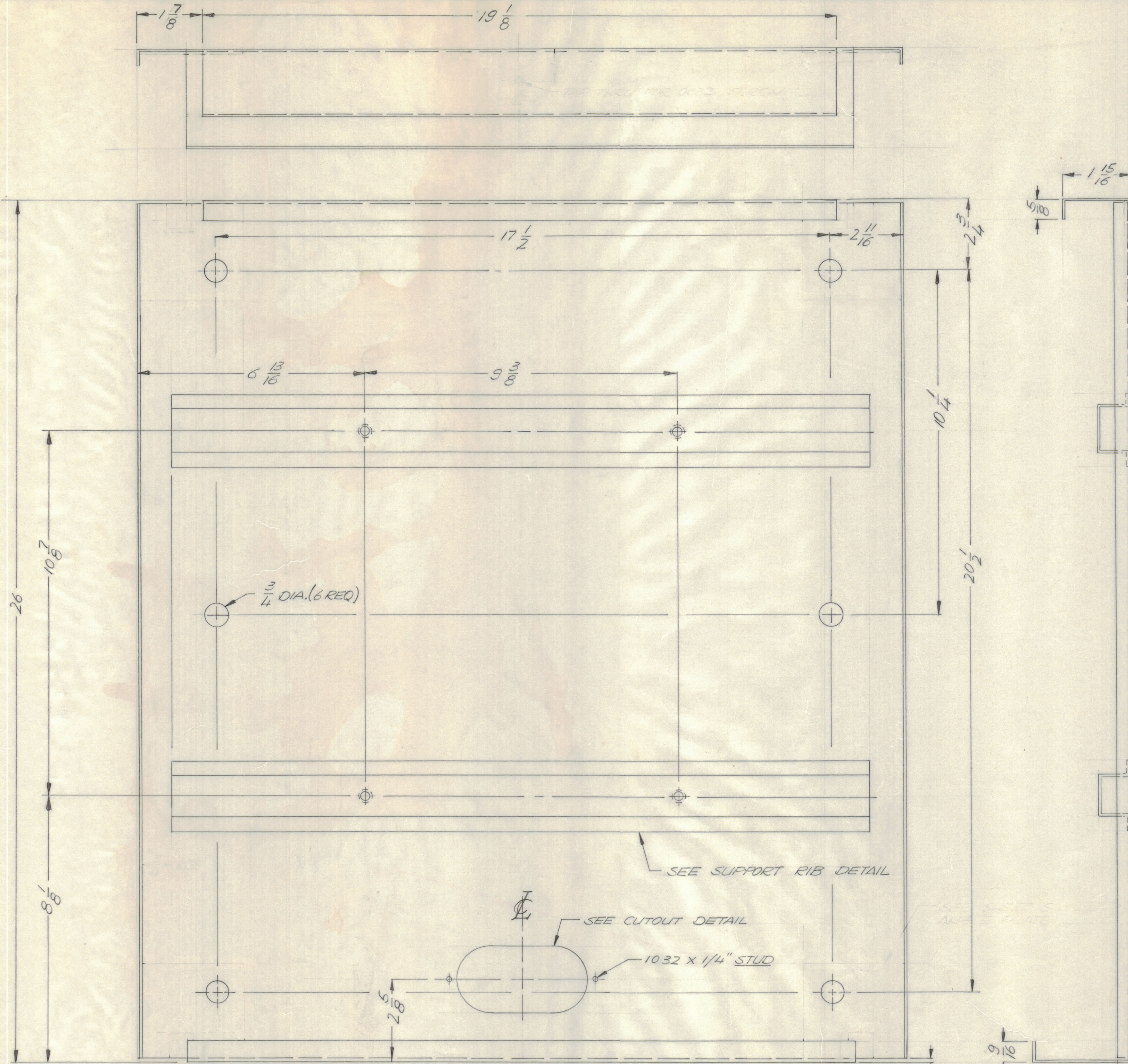
DECIMALS	FRACTIONS
.X ± .05	± 1/64
.XX ± .01	ANGLES
.XXX ± .005	± 0° -30'

MATERIAL  
SEE SHEET 1

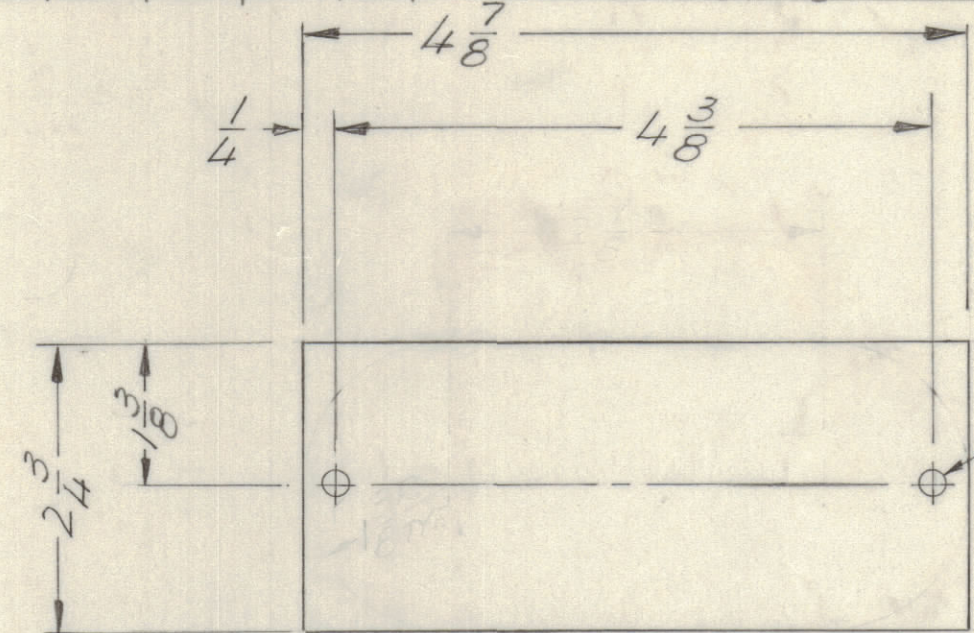
FINISH  
SEE SHEET 1

QTY. REQ.	ITEM	PART NO.	DESCRIPTION	SYMBOL
F. BUONETTI RE. LIST OF MATERIAL				
<small>FINAL APPROVAL</small> <i>[Signature]</i> <small>DATE</small> 23 Sep 71 <small>MECH. DES.</small> <i>[Signature]</i> <small>DATE</small> 23 Sep 71 <small>ELECT. DES.</small> <i>[Signature]</i> <small>DATE</small> 23 Sep 71 <small>CHECKED</small> <small>DATE</small> <small>DRAWN</small> G. EVANGELIST <small>DATE</small> 7/2/71				
<b>THE TECHNICAL MATERIEL CORP.</b> MAMARONECK, NEW YORK <b>REAR CORNER &amp; SKIN</b> <b>CABINET, ELECTRICAL</b> <b>EQUIP</b>				
SIZE	CODE	IDENT NO.	DWG NO.	ISSUE
D	82679		MS 6230	B
SCALE NTS				SHEET 4 OF 8

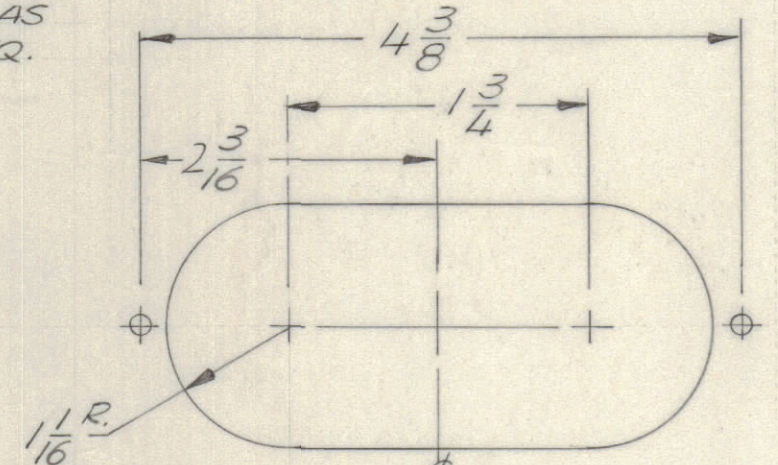
REVISIONS							
E.M.N.O.	DRAFT	CHKD	ZONE	LTR	DESCRIPTION	DATE	APPROVED
21220	4.2			A	ORIGINAL RELEASE FOR PRODUCTION	10/14/71	
21335	6.2			B	SEE SHEET ONE SEE SHEET 2	4-30-75 12-15-75	



DETAIL A  
SEE MS 6234 FOR COVER PLATE IF REQ.



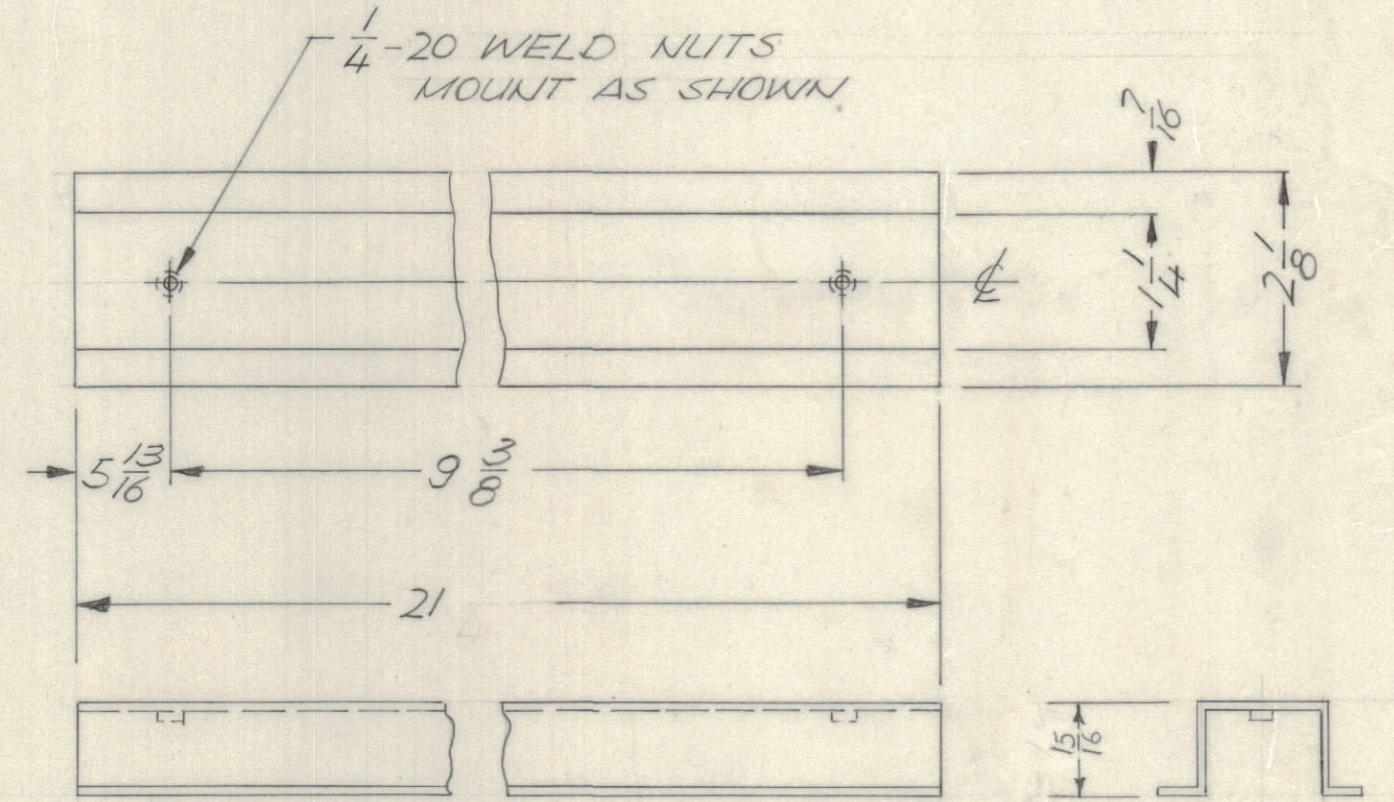
COVER PLATE



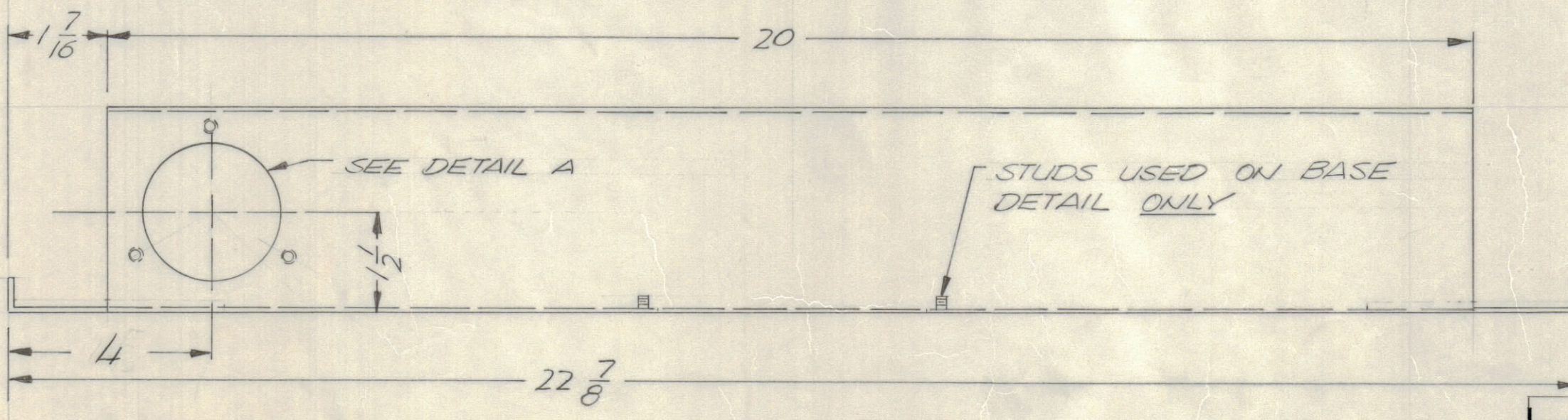
CUTOUT DETAIL

NOTE  
THIS DETAIL IS TYPICAL OF CUTOUTS ON LEFT & RIGHT SIDES EXCEPT 1032 WELD NUTS ARE USED FOR SIDE CUTOUTS AS SHOWN (SEE SHEETS 2 & 4)

COVER PLATE TO BE SUPPLIED ON ALL ACCESS HOLES ON CABINET. FOR SPARE PARTS USE ONLY, PART NO. IS MS 6233



SUPPORT RIB DETAIL

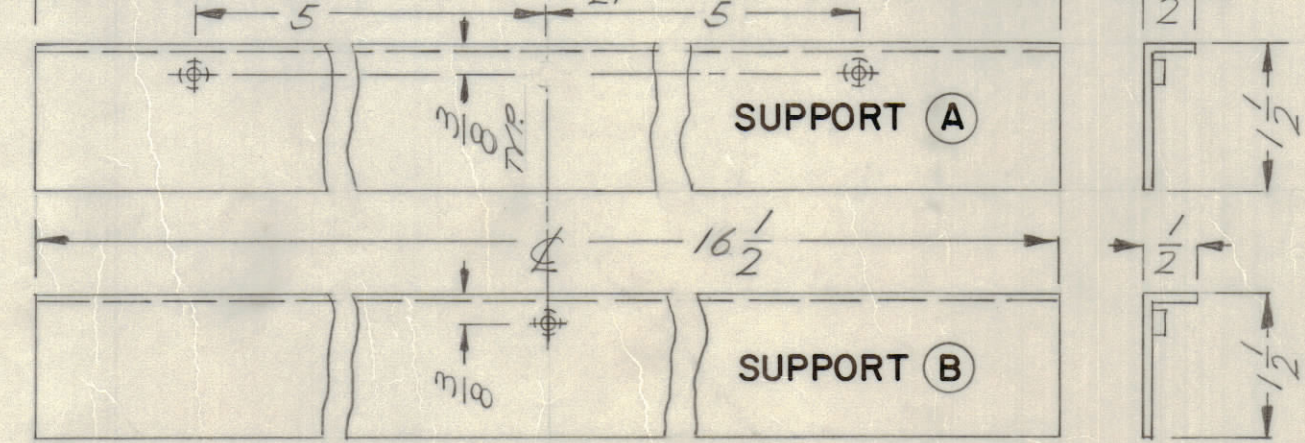
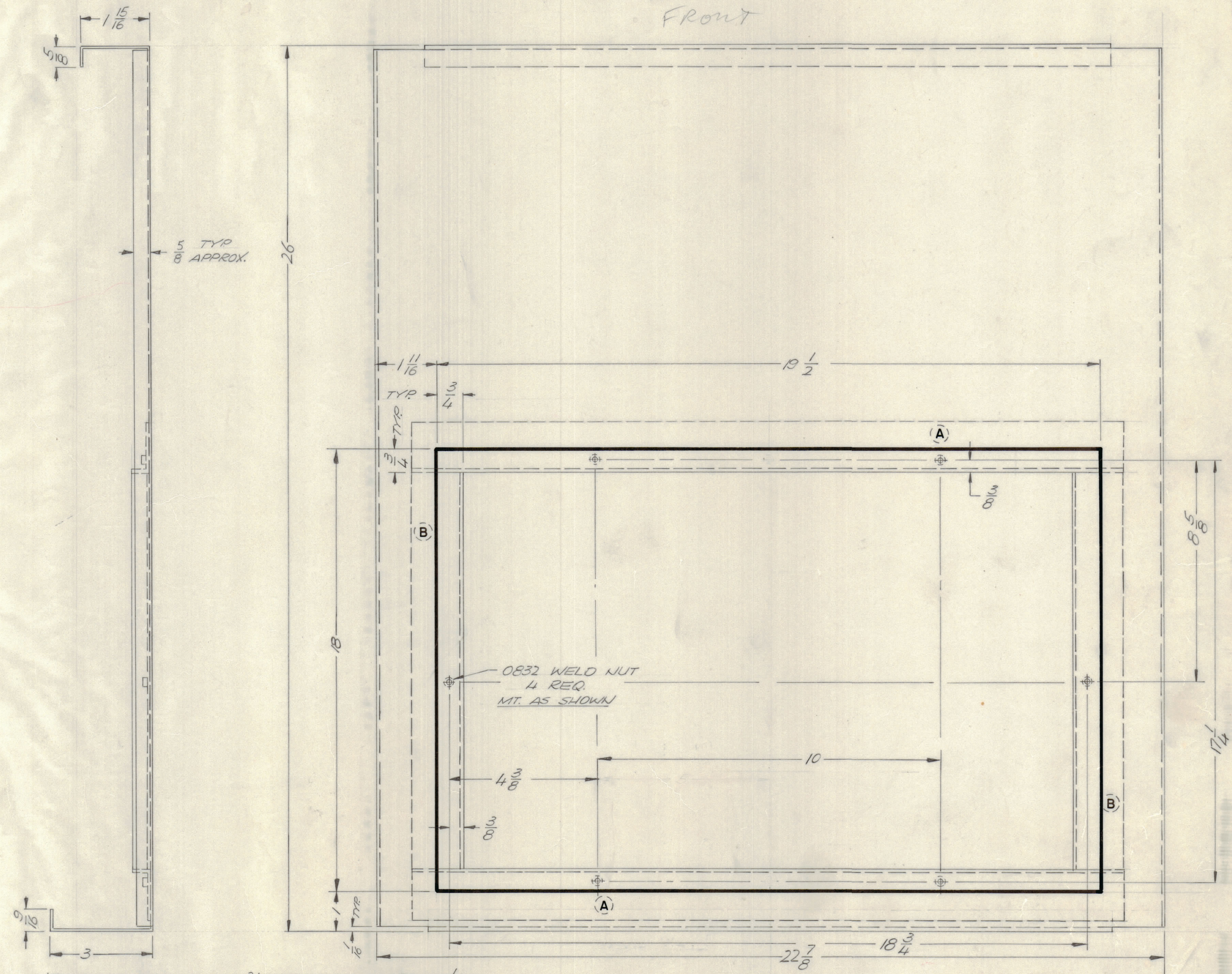
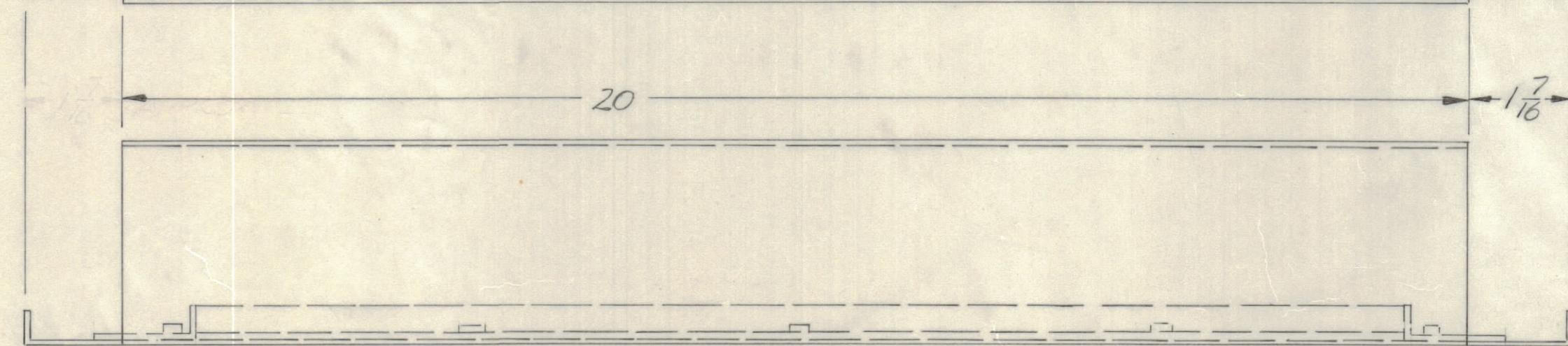
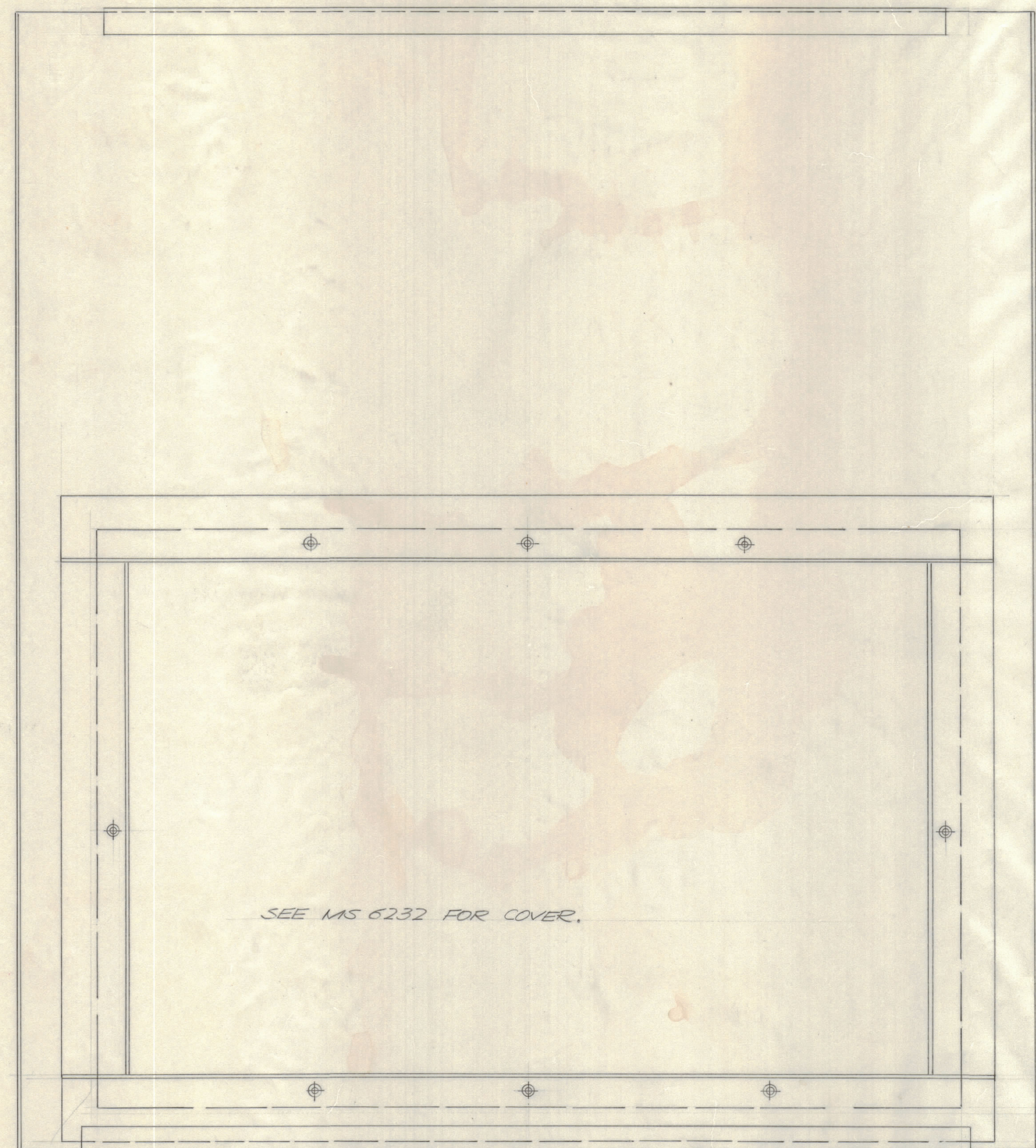
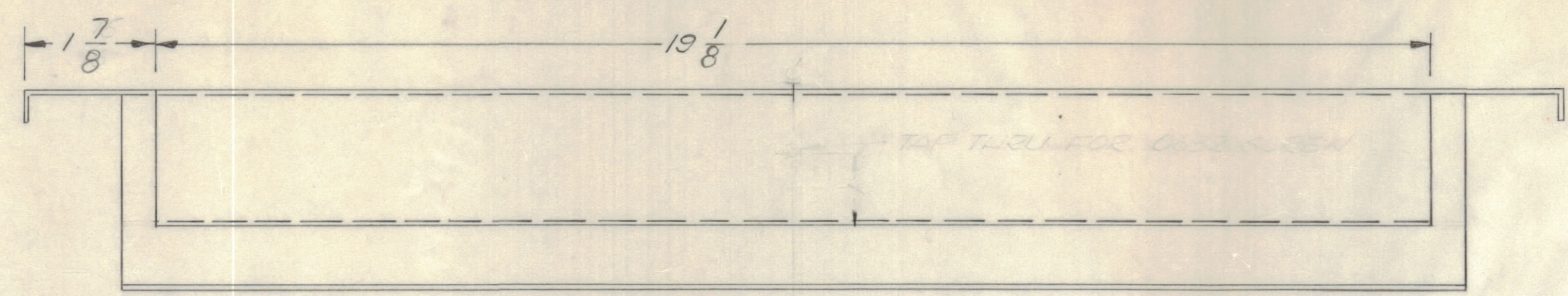


QTY / UNIT	MODEL USED ON	ASS'Y NO.
	CAB - 40, 50, 60	
APPLICATION		
CODE		

TOLERANCES ON	
DECIMALS	FRACTIONS
.X ± .05	± 1/64
.XX ± .01	ANGLES
.XXX ± .005	± 0° - 30'

QTY. REQ.	ITEM	PART NO.	DESCRIPTION	SYMBOL
F. BUDETTI LIST OF MATERIAL				
FINAL APPROVAL		DATE	THE TECHNICAL MATERIEL CORP.	
MECH. DES.		DATE	MAMARONECK, NEW YORK	
ELECT. DES.		DATE	BASE ASSEMBLY	
CHECKED		DATE	CABINET, ELECTRICAL EQUIP	
DRAWN		DATE	SIZE CODE IDENT NO. DWG NO.	
EVANGELIST		7/7/71	D	82679 MS 6230
MATERIAL		SEE SHEET 1		ISSUE
FINISH		SEE SHEET 1		B
SCALE NTS			SHEET 5 OF 8	

REVISIONS							
E.M.N.O	DRAFT	CHKD	ZONE	LTR	DESCRIPTION	DATE	APPROVED
21220	J.D.			A	ORIGINAL RELEASE FOR PRODUCTION	10/14/71	
21336	GDL			B	SEE SHEET ONE	4-30-75	
					SEE SHEET B	12-13-75	



CAB-110, 50, 60		
QTY / UNIT	MODEL USED ON	ASS'Y NO.
	APPLICATION	
	CODE	

UNLESS OTHERWISE SPECIFIED DIMENSIONS ARE IN INCHES AND INCLUDE CHEMICALLY APPLIED OR PLATED FINISHES

TOLERANCES ON  
 DECIMALS .X ± .05  
 .XX ± .01  
 .XXX ± .005  
 FRACTIONS ± 1/64  
 ANGLES ± 0° -30'

MATERIAL SEE SHEET 1  
 FINISH SEE SHEET 1

QTY. REQ.	ITEM	PART NO.	DESCRIPTION	SYMBOL
F. BUDETTI				
LIST OF MATERIAL				
THE TECHNICAL MATERIEL CORP. MAMARONECK, NEW YORK				
TOP ASSEMBLY CABINET, ELECTRICAL EQUIP				
SIZE	CODE	IDENT NO.	DWG NO.	ISSUE
D		82679	MS 6230	B
SCALE NTS				SHEET 6 OF 8

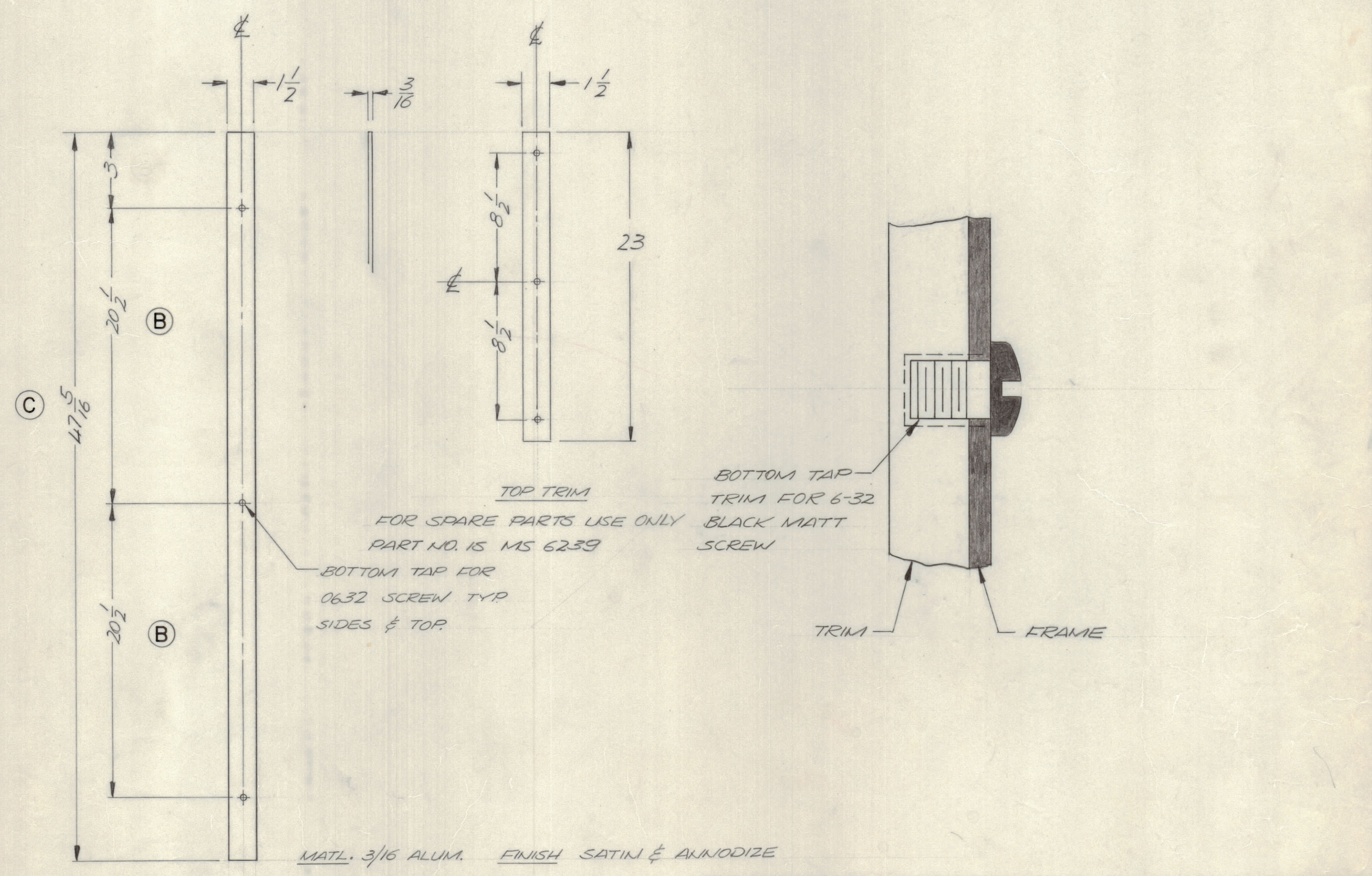
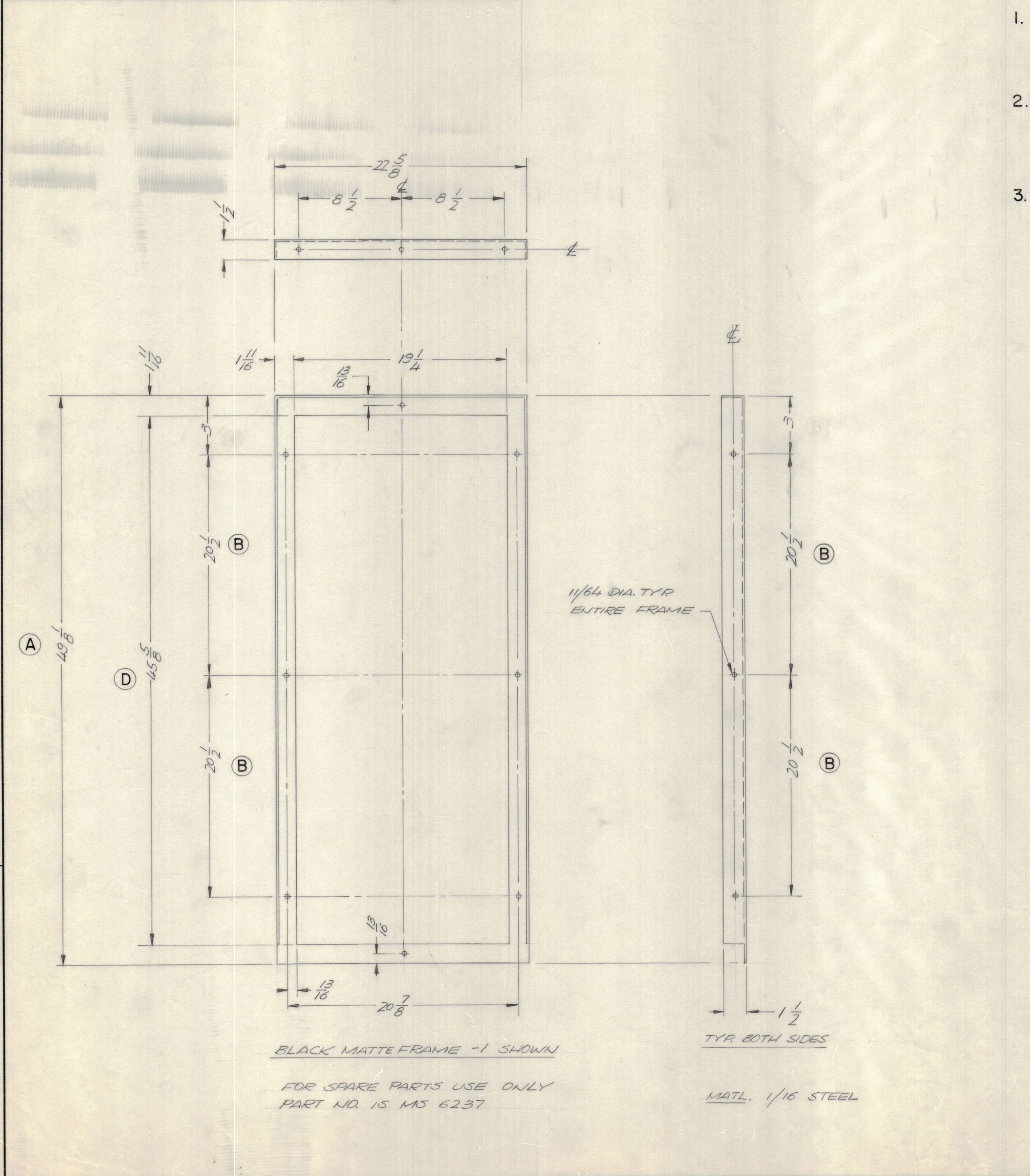
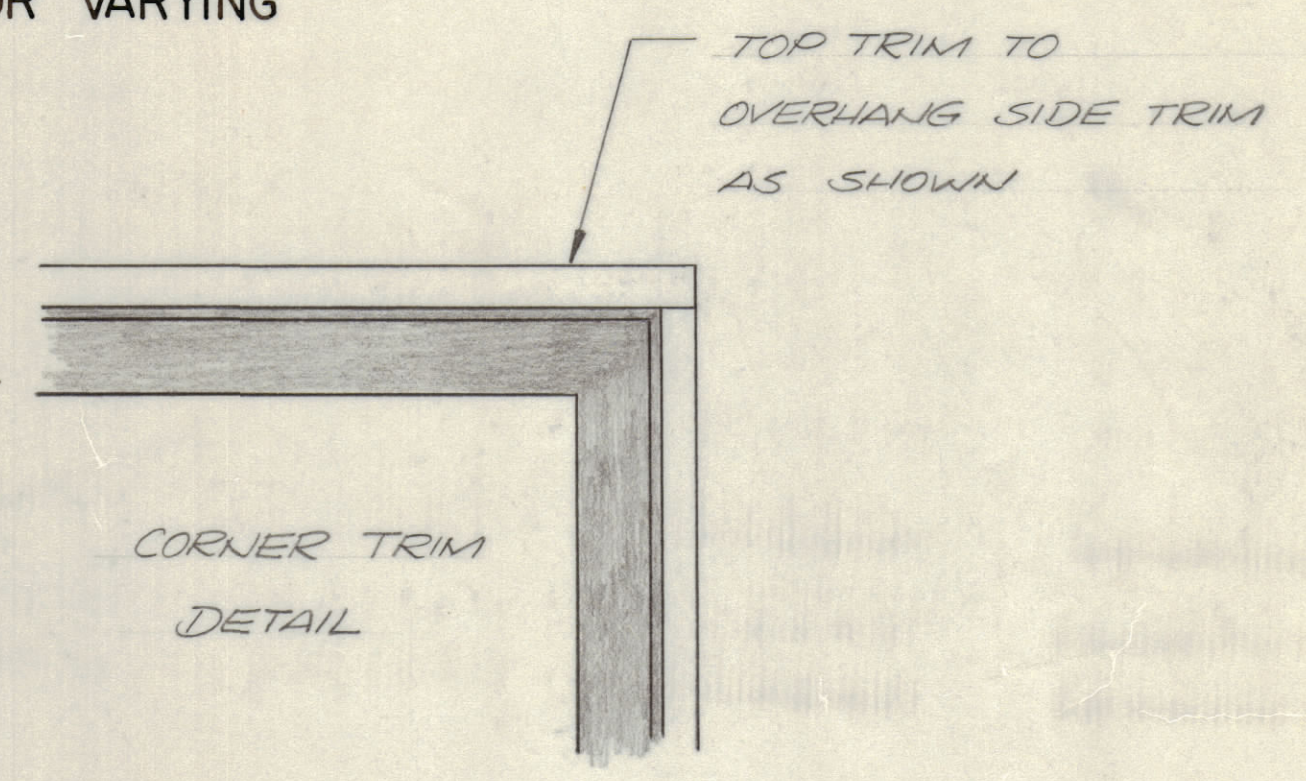
NOTICE TO PERSONS RECEIVING THIS DRAWING  
 THE TECHNICAL MATERIEL CORPORATION claims proprietary right in the material disclosed hereon. This drawing is issued in confidence for engineering information only and may not be reproduced or used to manufacture anything shown hereon without permission from THE TECHNICAL MATERIEL CORPORATION to the user. This drawing is loaned for mutual assistance and is subject to recall at any time.

CABINET	FRAME HEIGHT (A)	(B)	TRIM HEIGHT (C)	(D)
MS 6230 -1	49 1/8	20 1/2	47 5/16	45 5/8
MS 6230 -2	61 3/8	26 5/8	59 9/16	57 7/8
MS 6230 -3	73 5/8	32 3/4	71 13/16	70 1/8

REVISIONS							
E.M.N.NO	DRAFT	CHKD	ZONE	LTR	DESCRIPTION	DATE	APPROVED
	(1)				ORIGINAL RELEASE FOR PRODUCTION	10/14/71	
21220				A	SEE SHEET ONE	11-30-75	
21336	G.O.L.			B	SEE SHEET 3	12-13-75	

NOTE

- ALL HEIGHT DIMENSIONS SHOWN FOR MS 6230-1. SEE CHART FOR VARYING DIMENSIONS FOR OTHER CABINETS
- WHEN MOUNTING BLACK MATTE FRAME TO CABINET FRONT, ASSEMBLE TRIM TO FRAME & USE FRAME AS TEMPLATE ON CABINET, MARK, THEN DRILL & TAP HOLES FOR 0632 SCREWS
- TRIM IS OPTIONAL. WHEN ORDERING CABINET SPECIFY WITH OR WITHOUT TRIM.

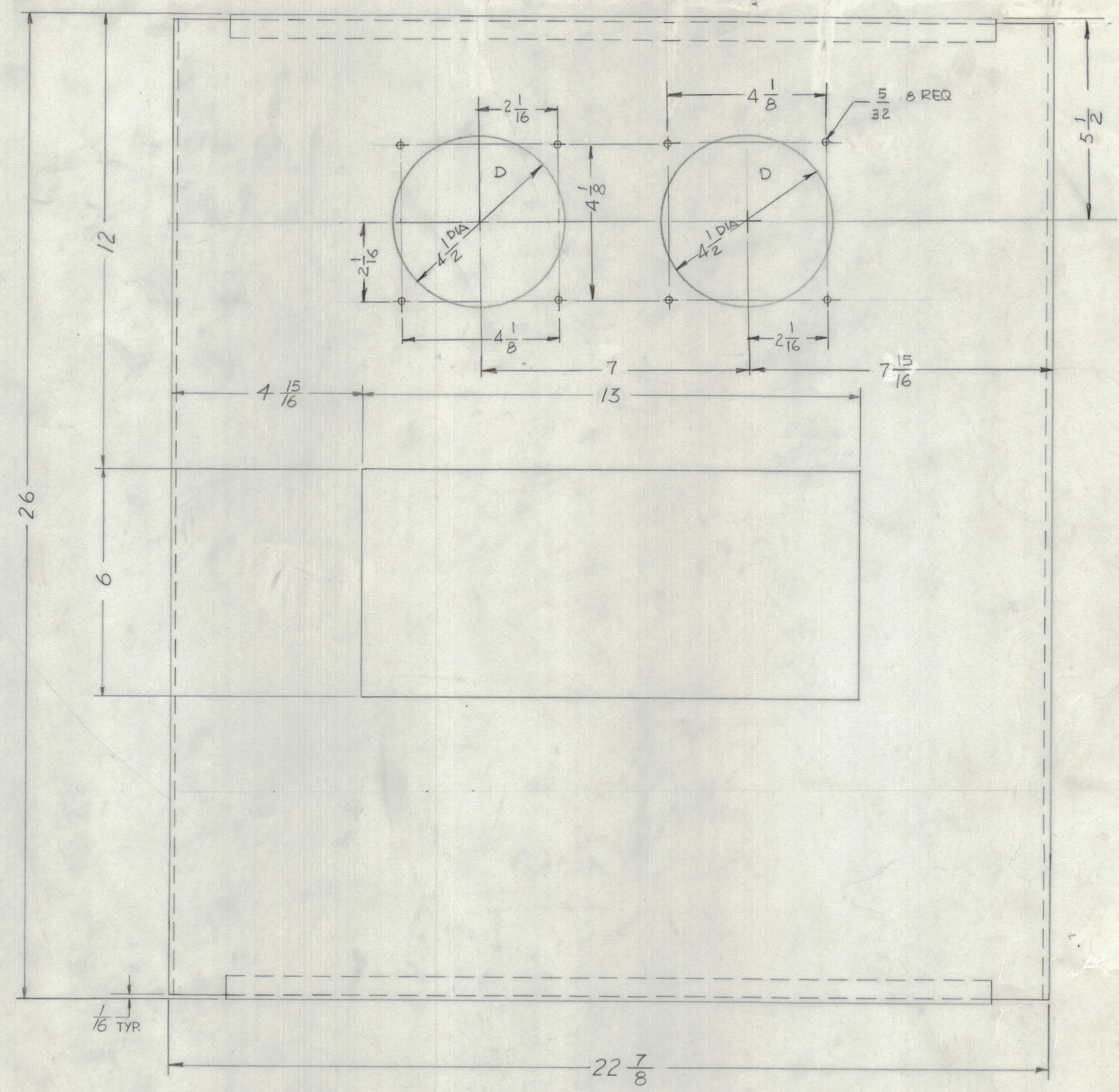
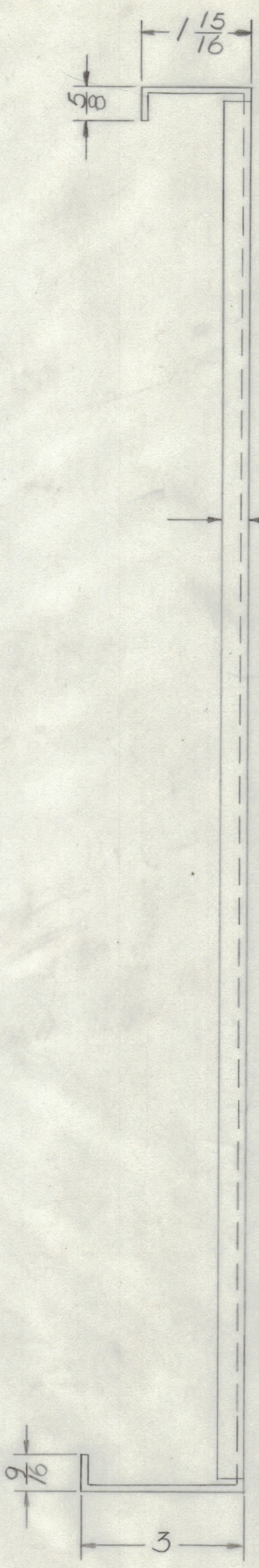
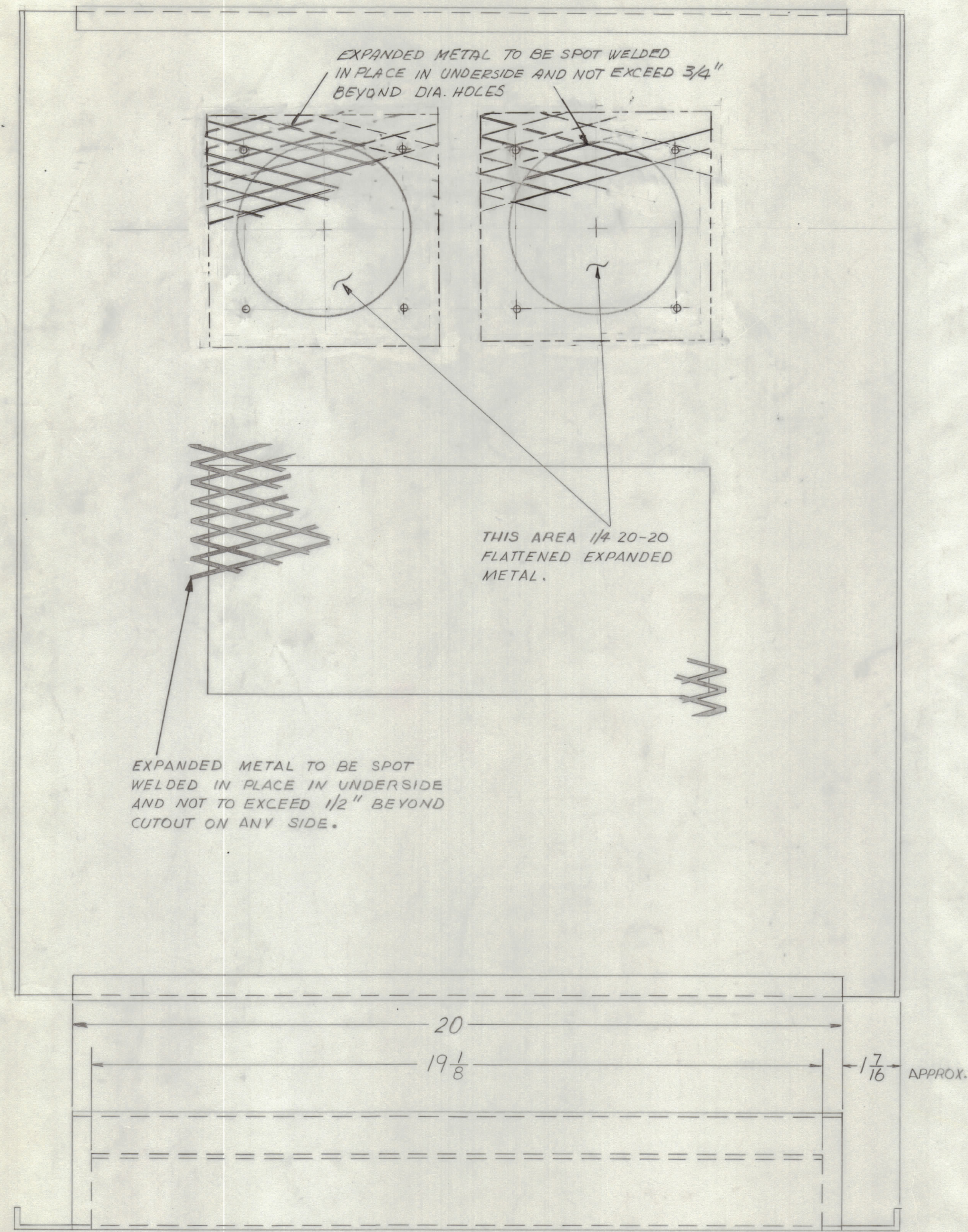


QTY. REQ.	ITEM	PART NO.	DESCRIPTION	SYMBOL
E. BUDETTI LIST OF MATERIAL				
FINAL APPROVAL		DATE	THE TECHNICAL MATERIEL CORP.	
MECH. DES.		DATE	MAMARONECK, NEW YORK	
ELECT. DES.		DATE	(optional) TRIM DETAILS	
CHECKED		DATE	CABINET, ELECTRICAL EQUIP	
DRAWN		DATE	SIZE CODE IDENT NO. DWG NO. ISSUE	
MATERIAL			D 82679	MS 6230 B
FINISH			SCALE NTS SHEET 7 OF 8	

QTY / UNIT	MODEL USED ON	ASSY NO.
	CAB 40, 50, 60	
APPLICATION		
	CODE	

NOTICE TO PERSONS RECEIVING THIS DRAWING  
THE TECHNICAL MATERIEL CORPORATION claims proprietary right in the material disclosed hereon. This drawing is issued in confidence for engineering information only and may not be reproduced or used to manufacture anything shown hereon without permission from THE TECHNICAL MATERIEL CORPORATION to the user. This drawing is loaned for mutual assistance and is subject to recall at any time.

REVISIONS							
E.M.N.O	DRAFT	CHKD	ZONE	LTR	DESCRIPTION	DATE	APPROVED
21220	J.S.O.			A	SEE SHEET ONE	5-1-75	Cl
21336	G.D.L.			b	TWO 'D' HOLES & NOTE FOR EXPANDED METAL ADDED	12-23-75	Cl



CAB 40 S		
QTY / UNIT	MODEL USED ON	ASS'Y NO.
APPLICATION		
CODE		
<small>NOTICE TO PERSONS RECEIVING THIS DRAWING</small> <small>THE TECHNICAL MATERIEL CORPORATION claims proprietary right in the material disclosed hereon. This drawing is issued in confidence for engineering information only and may not be reproduced or used to manufacture anything shown hereon without permission from THE TECHNICAL MATERIEL CORPORATION to the user. This drawing is loaned for mutual assistance and is subject to recall at any time.</small>		

UNLESS OTHERWISE SPECIFIED DIMENSIONS ARE IN INCHES AND INCLUDE CHEMICALLY APPLIED OR PLATED FINISHES	
DECIMALS	FRACTIONS
.X ± .05	± 1/64
.XX ± .01	ANGLES
.XXX ± .005	± 0° -30'
MATERIAL	
SEE SHEET 1	
FINISH	
SEE SHEET 1	

QTY. REQ.	ITEM	PART NO.	DESCRIPTION	SYMBOL
LIST OF MATERIAL				
FINAL APPROVAL: [Signature] DATE: [ ] MECH. DES. DATE: [ ] ELECT. DES. DATE: [ ] CHECKED: G. [Signature] DATE: 5-1-75 DRAWN: [Signature] DATE: 5-1-75				
<b>THE TECHNICAL MATERIEL CORP.</b> MAMARONECK, NEW YORK				
<b>TOP ASSEMBLY</b> <b>CABINET, ELEC. EQUIP.</b>				
SIZE	CODE	IDENT NO.	DWG NO.	ISSUE
D	82679	MS6230		B
SCALE NTS				SHEET 8 OF 8