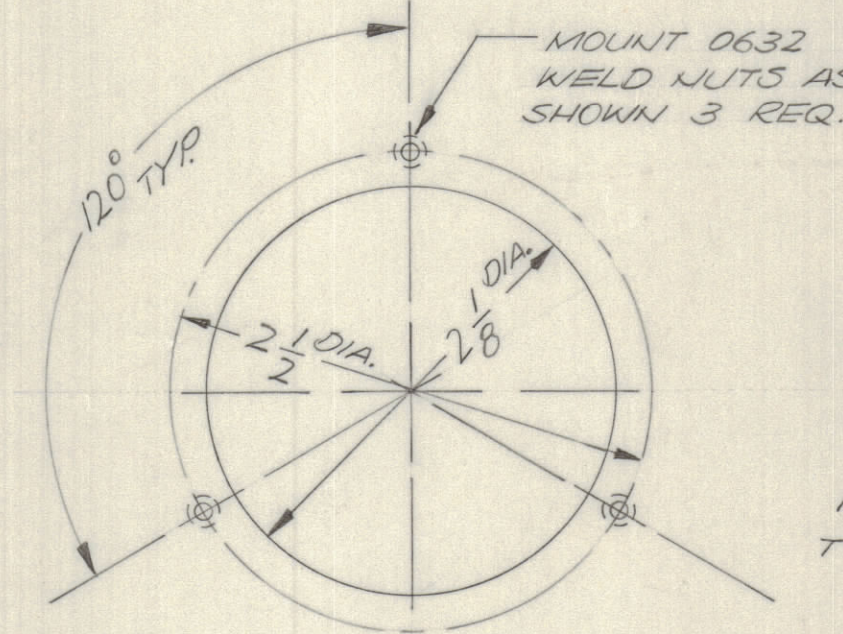
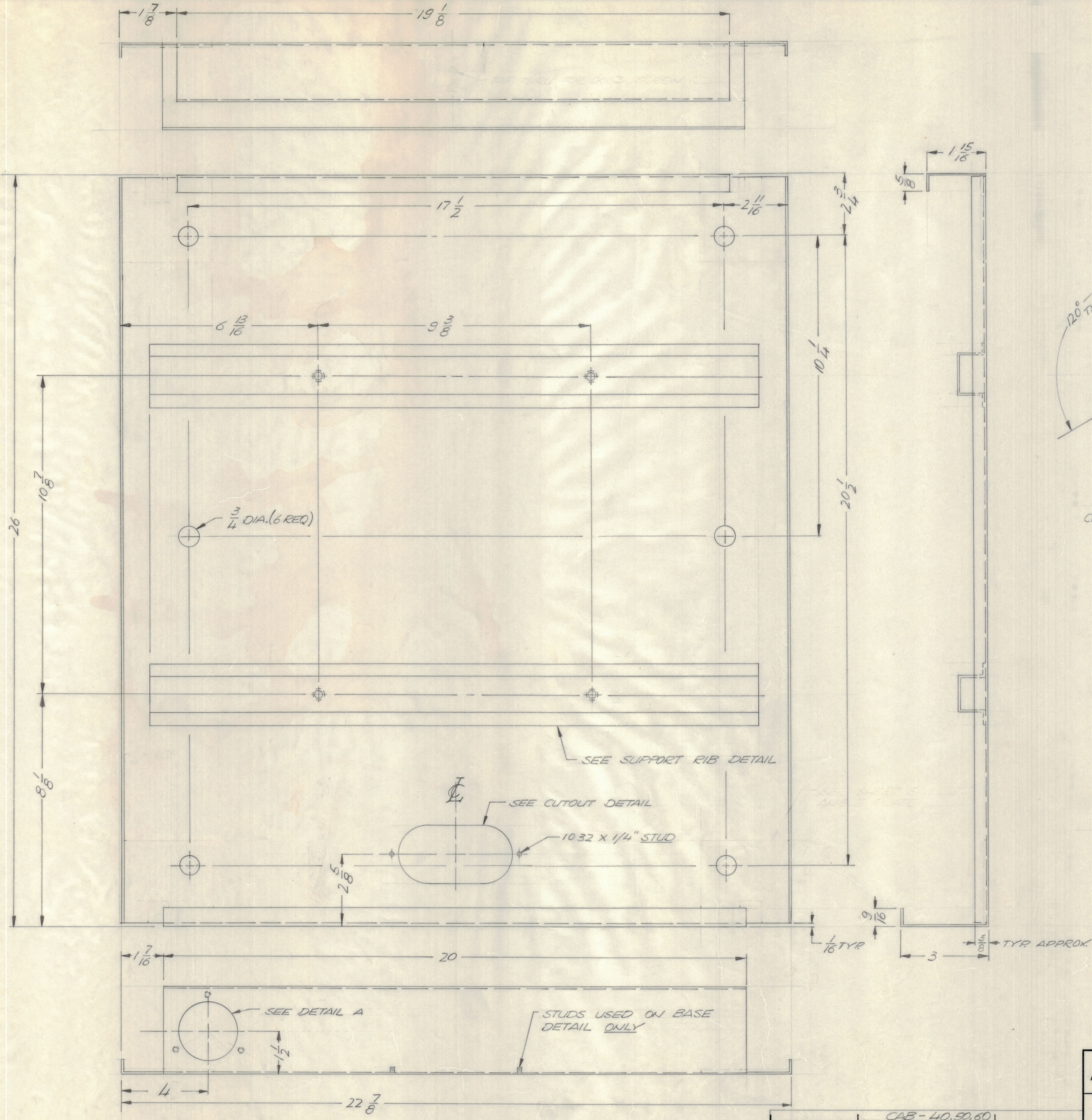
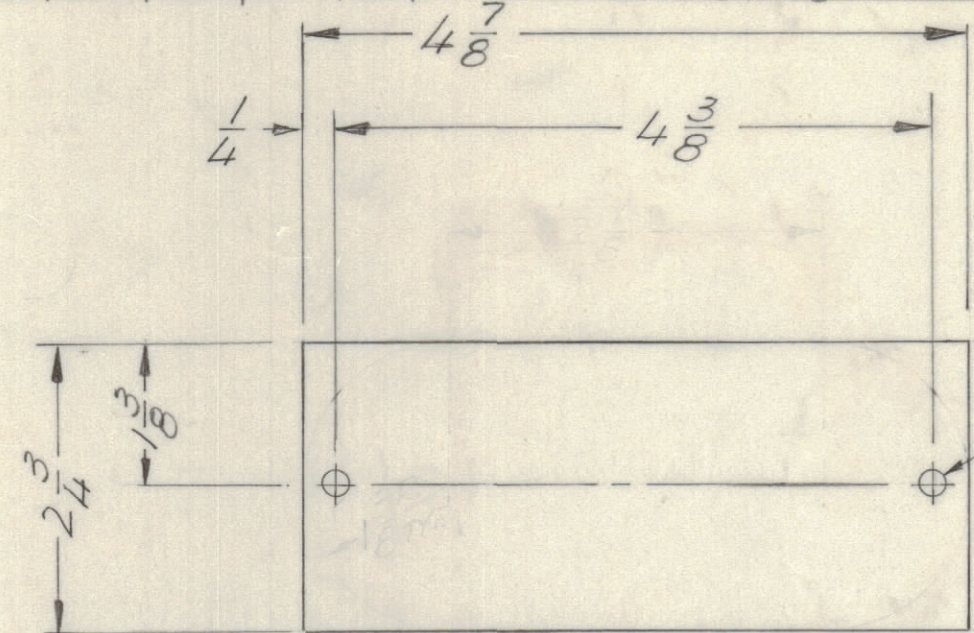


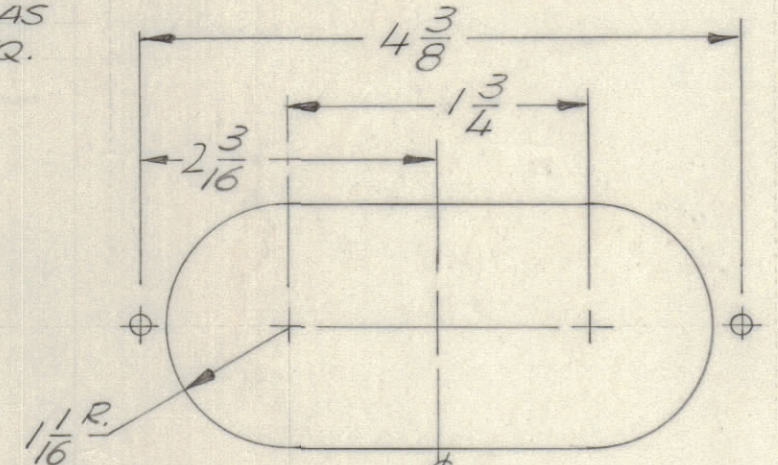
REVISIONS							
E.M.N.O.	DRAFT	CHKD	ZONE	LTR	DESCRIPTION	DATE	APPROVED
21220	4.2			A	ORIGINAL RELEASE FOR PRODUCTION	10/14/71	
21335	6.2			B	SEE SHEET ONE SEE SHEET 2	4-30-75 12-15-75	



DETAIL A
SEE MS 6234 FOR COVER PLATE IF REQ.



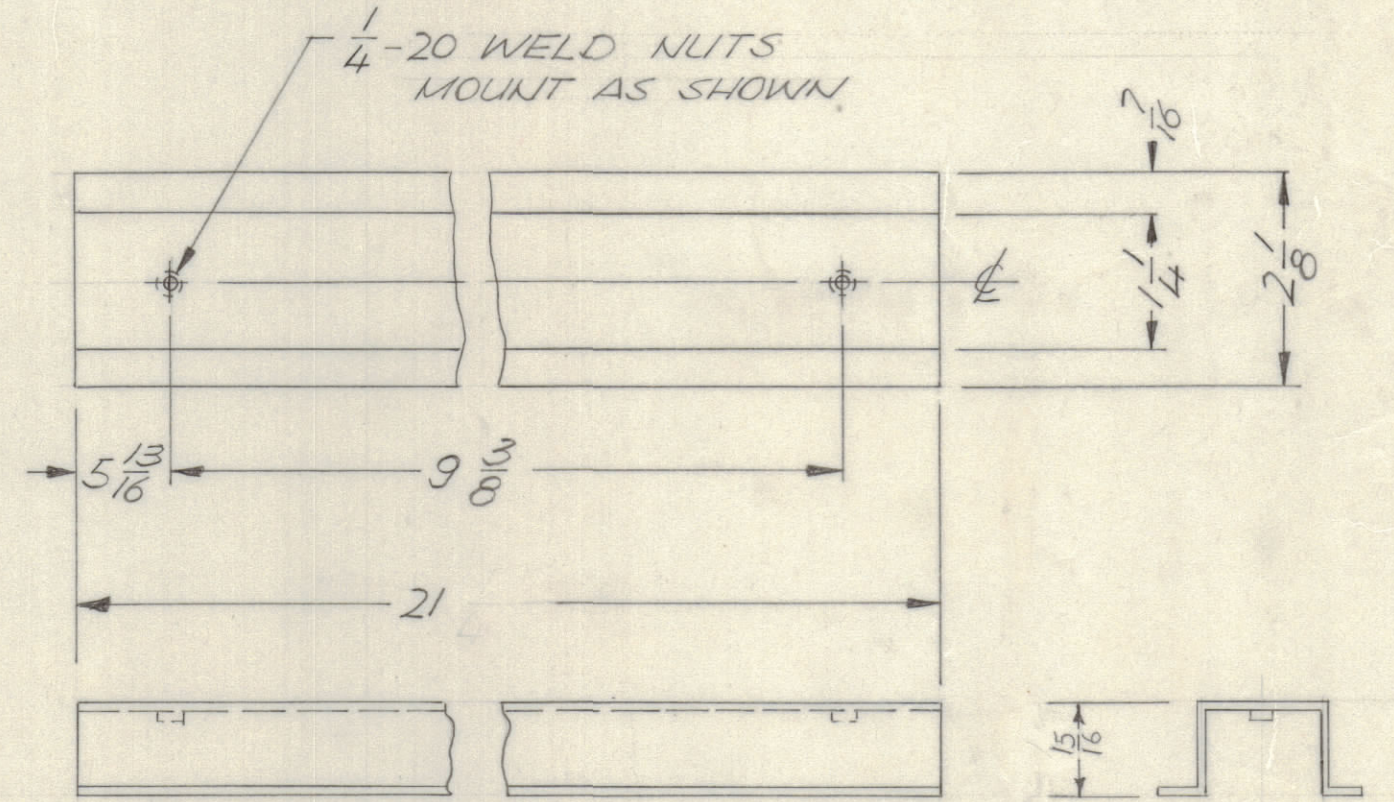
COVER PLATE



CUTOUT DETAIL

NOTE
THIS DETAIL IS TYPICAL OF CUTOUTS ON LEFT & RIGHT SIDES EXCEPT 1032 WELD NUTS ARE USED FOR SIDE CUTOUTS AS SHOWN (SEE SHEETS 2 & 4)

COVER PLATE TO BE SUPPLIED ON ALL ACCESS HOLES ON CABINET. FOR SPARE PARTS USE ONLY, PART NO. IS MS 6233



SUPPORT RIB DETAIL

QTY. REQ.	ITEM	PART NO.	DESCRIPTION	SYMBOL
F. BUDETTI LIST OF MATERIAL				
FINAL APPROVAL	DATE	THE TECHNICAL MATERIEL CORP.		
MECH. DES.	DATE	MAMARONECK, NEW YORK		
ELECT. DES.	DATE	BASE ASSEMBLY		
CHECKED	DATE	CABINET, ELECTRICAL EQUIP		
DRAWN	DATE	SIZE	CODE IDENT NO.	DWG NO.
EVANGELIST	7/7/71	D	82679	MS 6230
MATERIAL			ISSUE	
SEE SHEET 1			B	
FINISH			SCALE	SHEET 5 OF 8
SEE SHEET 1			N.T.S.	

QTY / UNIT	MODEL USED ON	ASS'Y NO.
	CAB - 40, 50, 60	
APPLICATION		
CODE		
NOTICE TO PERSONS RECEIVING THIS DRAWING		
THE TECHNICAL MATERIEL CORPORATION claims proprietary right in the material disclosed herein. This drawing is issued in confidence for engineering information only and may not be reproduced or used to manufacture anything shown herein without permission from THE TECHNICAL MATERIEL CORPORATION to the user. This drawing is loaned for mutual assistance and is subject to recall at any time.		