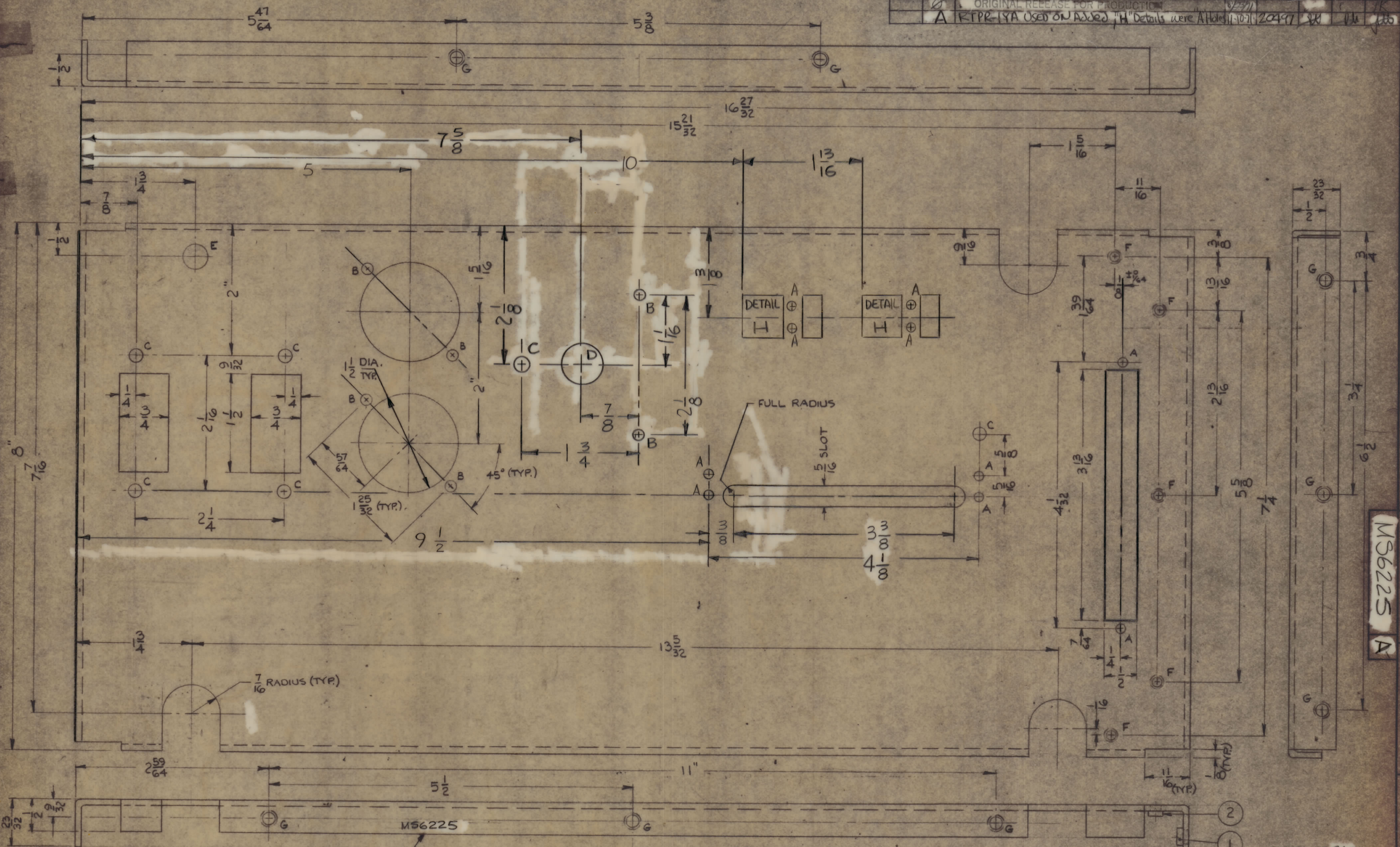


| REVISEMENTS | | DATE | BY | CHKD | APPD |
|-------------|--|---------|----|------|------|
| 1 | ORIGINAL RELEASE FOR PRODUCTION | 8/23/71 | | | |
| 2 | A RTPR-1YA Used on Added "H" Details were Added 11-10-71 | 2-24-77 | | | |

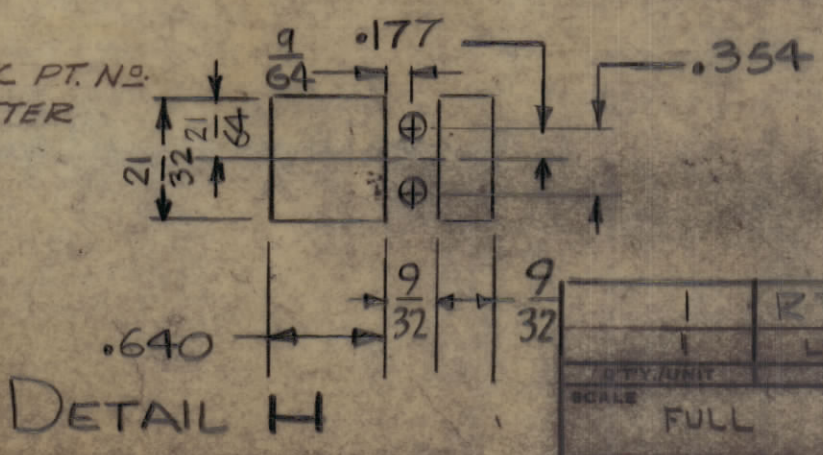


MS6225 A

REF: LD2480

| HOLE | DIAMETER | REQ. |
|------|-----------|------|
| A | 9/64 | 10 |
| B | 11/64 | 6 |
| C | 13/64 | 6 |
| D | 5/8 | 1 |
| E | 3/8 | 1 |
| F | .191-.194 | 5 |
| G | .221-.224 | 11 |

MARK 1/8 HIGH GOTHIC TMC PT. NO. W/LATEST REV. LETTER



DETAIL H

NOTES

| | | |
|-----------|----------|--------|
| 1 | RTPR-1YA | AX5161 |
| 1 | LSCA-2 | |
| SCALE | FULL | |
| CORE | | |
| ASSY. NO. | | |

| REV'D | ISSN | PART NUMBER | DESCRIPTION | QTY REQD |
|-------|------|--------------|-------------|----------|
| 5 | 2 | NT-129-832-4 | NUT, SWAGE | |
| 11 | 1 | NT-129-632-4 | NUT, SWAGE | |

| LIST OF MATERIAL | | THE TECHNICAL MATERIEL CORP. | |
|---|--|------------------------------|--|
| MATERIAL | | MAMARONECK, NEW YORK | |
| .081 THICK, ALUMINUM, 5052-H32 | | CHASSIS, MAIN | |
| FINISH: 5404 YELLOW IRIDITE | | DATE: 8-23-71 | |
| UNLESS OTHERWISE SPECIFIED DIMENSIONS ARE IN INCHES AND INCLUDE CHEMICALLY APPLIED OR PLATED FINISHES | | DRAWN: RJA | |
| TOLERANCES: .0005 | | CHECKED: J. Demarco | |
| DECIMALS: .0005 | | DATE: 8-23-71 | |
| FRACTIONS: 1/32 | | PART NO: MS6225 A | |
| TOLERANCES: .0005 | | REV: A | |
| DECIMALS: .0005 | | DATE: 8-23-71 | |
| FRACTIONS: 1/32 | | DRAWN: RJA | |