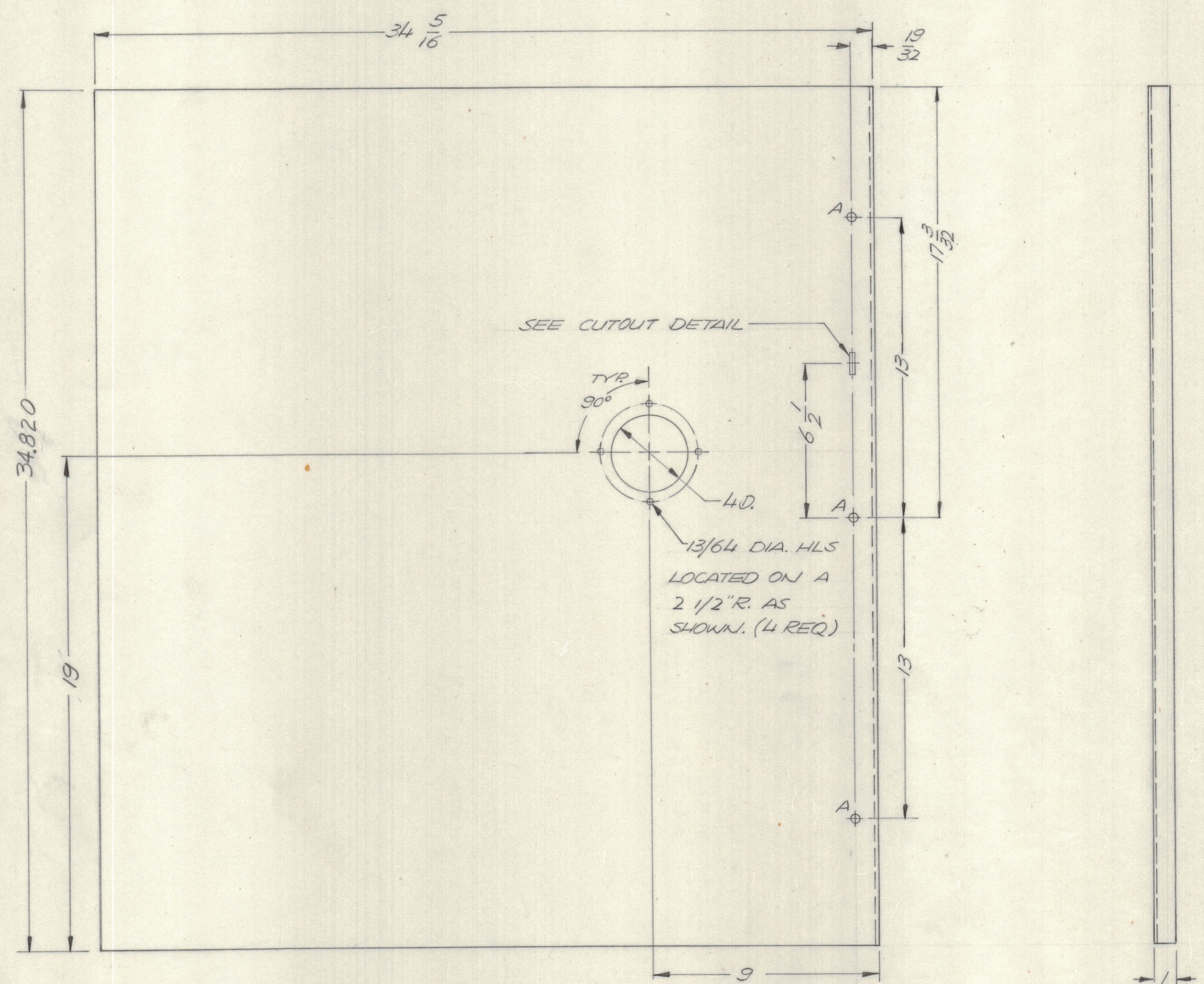
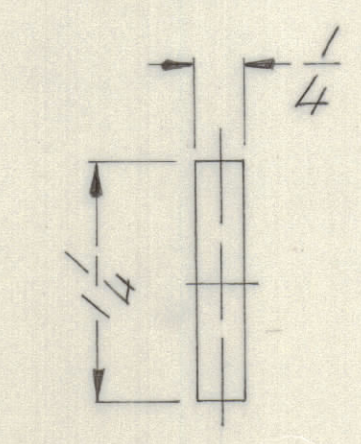


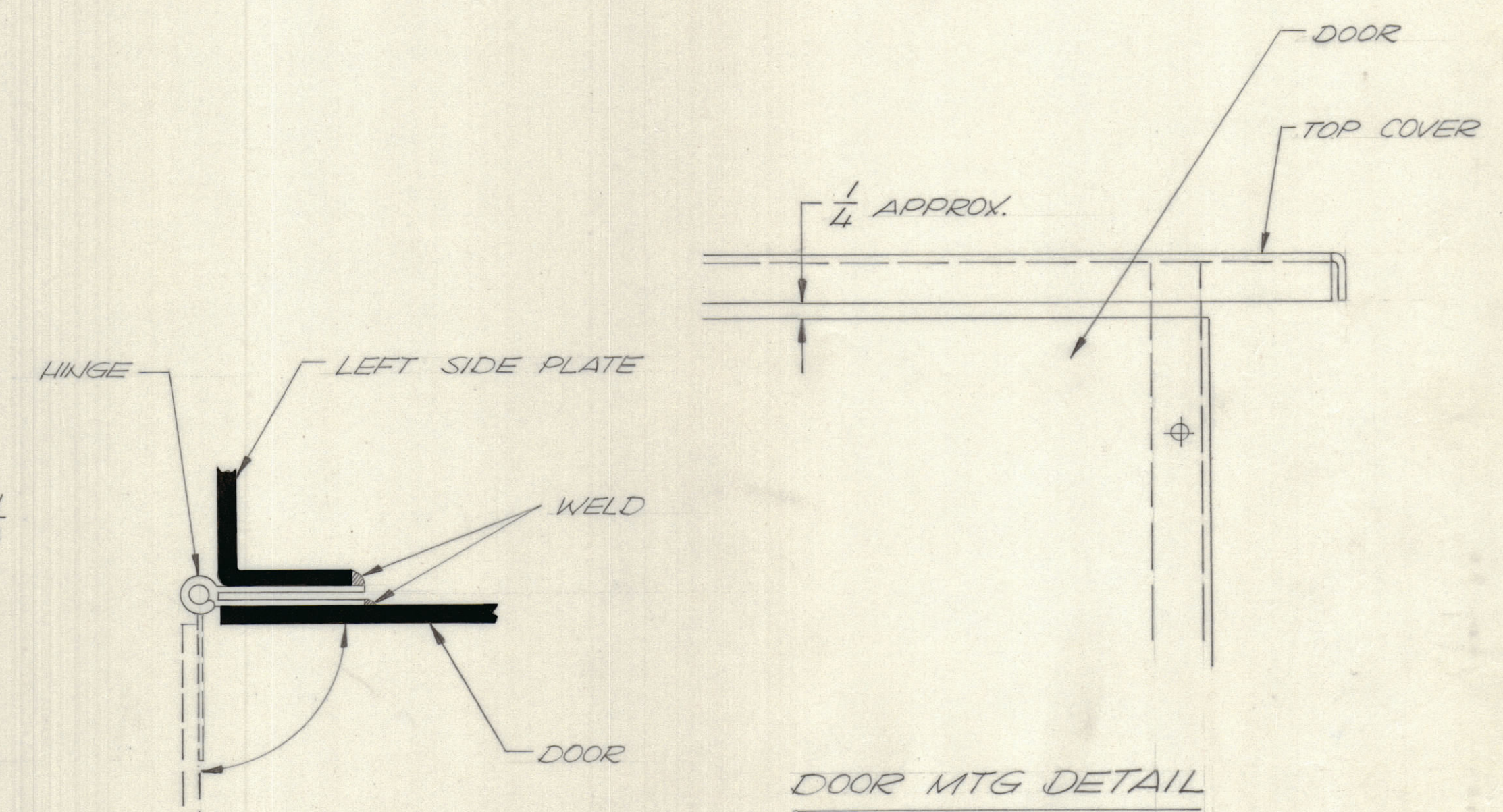
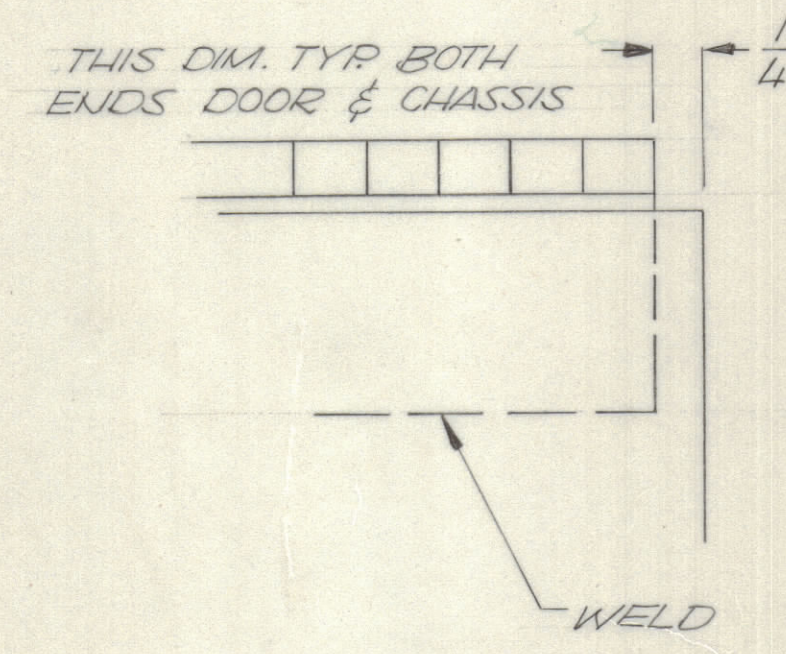
REVISIONS							
E.M.N.O	DRAFT	CHKD	ZONE	LTR	DESCRIPTION	DATE	APPROVED
	(D)			A	ORIGINAL RELEASE FOR PRODUCTION	12/14/72	
					SEE SHEET 2 & 4	5-10-77	



DOOR



HOLE A - 15/64 DIA. - 3 REQ.



- UNLESS OTHERWISE SPECIFIED:
1. USE MATERIAL THICKNESS FOR MAXIMUM RADIUS ON ALL BENDS.
  2. ALL ANGULAR BENDS 90 DEGREES.
  3. REMOVE ALL BURRS AND SHARP EDGES.
  4. MOUNT INSERTS AFTER FINISHING.

1	MAT-5	BMA 475
QTY / UNIT	MODEL USED ON	ASS'Y NO.
APPLICATION		
CODE		
<small>NOTICE TO PERSONS RECEIVING THIS DRAWING</small> <small>THE TECHNICAL MATERIEL CORPORATION claims proprietary right in the material disclosed herein. This drawing is issued in confidence for engineering information only and may not be reproduced or used to manufacture anything shown hereon without permission from THE TECHNICAL MATERIEL CORPORATION to the user. This drawing is loaned for mutual assistance and is subject to recall at any time.</small>		

QTY. REQ.	ITEM	PART NO.	DESCRIPTION	SYMBOL
E. BUDETTI LIST OF MATERIAL				
FINAL APPROVAL		DATE	THE TECHNICAL MATERIEL CORP.	
MECH. DES.		DATE	MAMARONECK, NEW YORK	
ELECT. DES.		DATE	CHANNELIZED LF	
CHECKED		DATE	ANTENNA TUNER	
DRAWN		DATE	SIZE	CODE IDENT NO. DWG NO.
			D	82679 MS 6215
			SCALE	ISSUE
			N/T	A
			SHEET 3 OF 4	

NOTE: DIMENSIONS GIVEN FOR REFERENCE ONLY.