

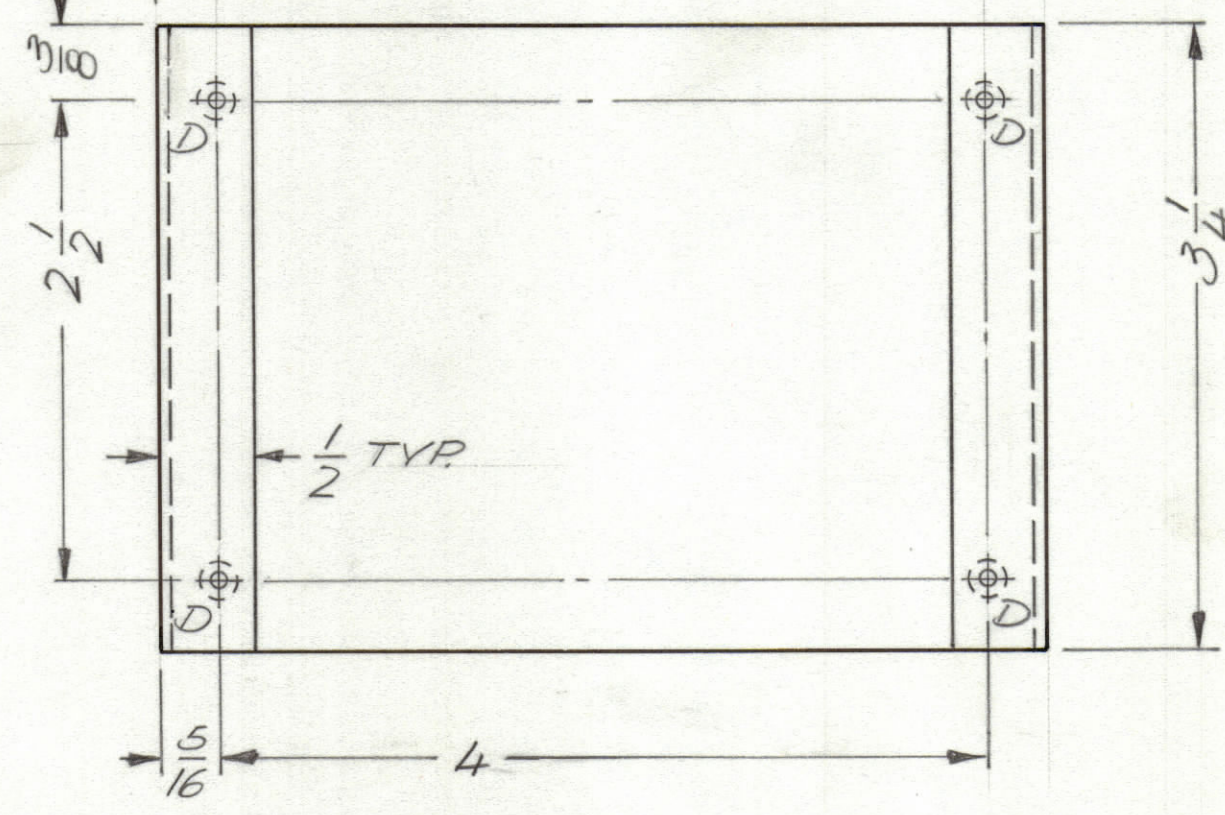
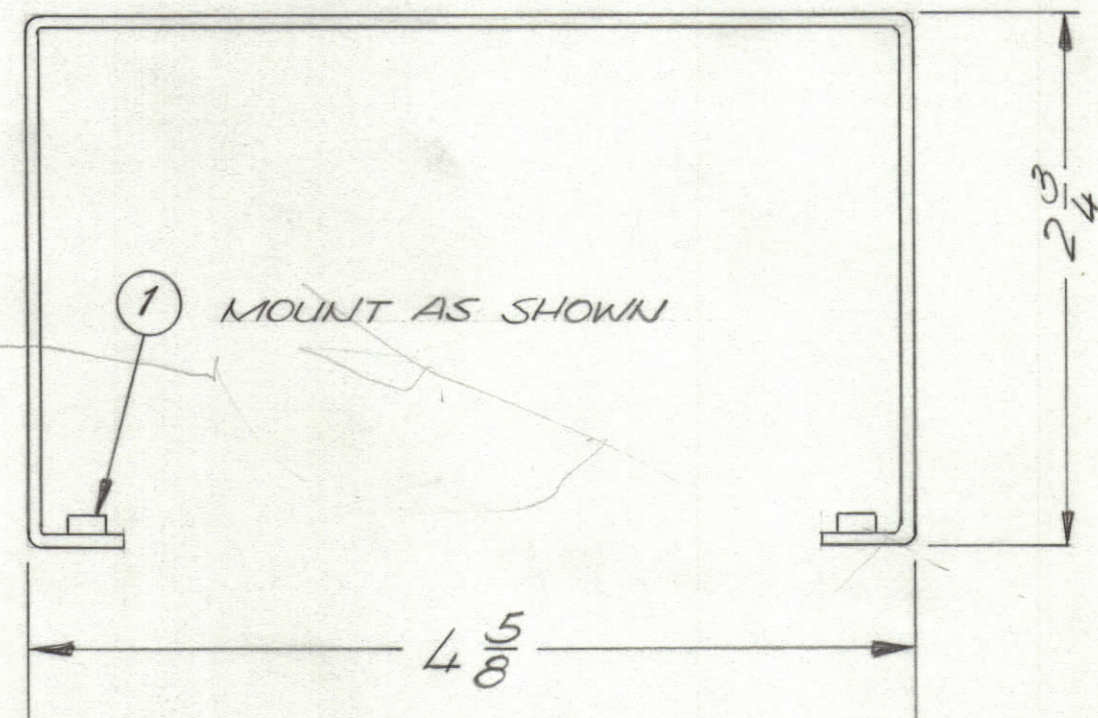
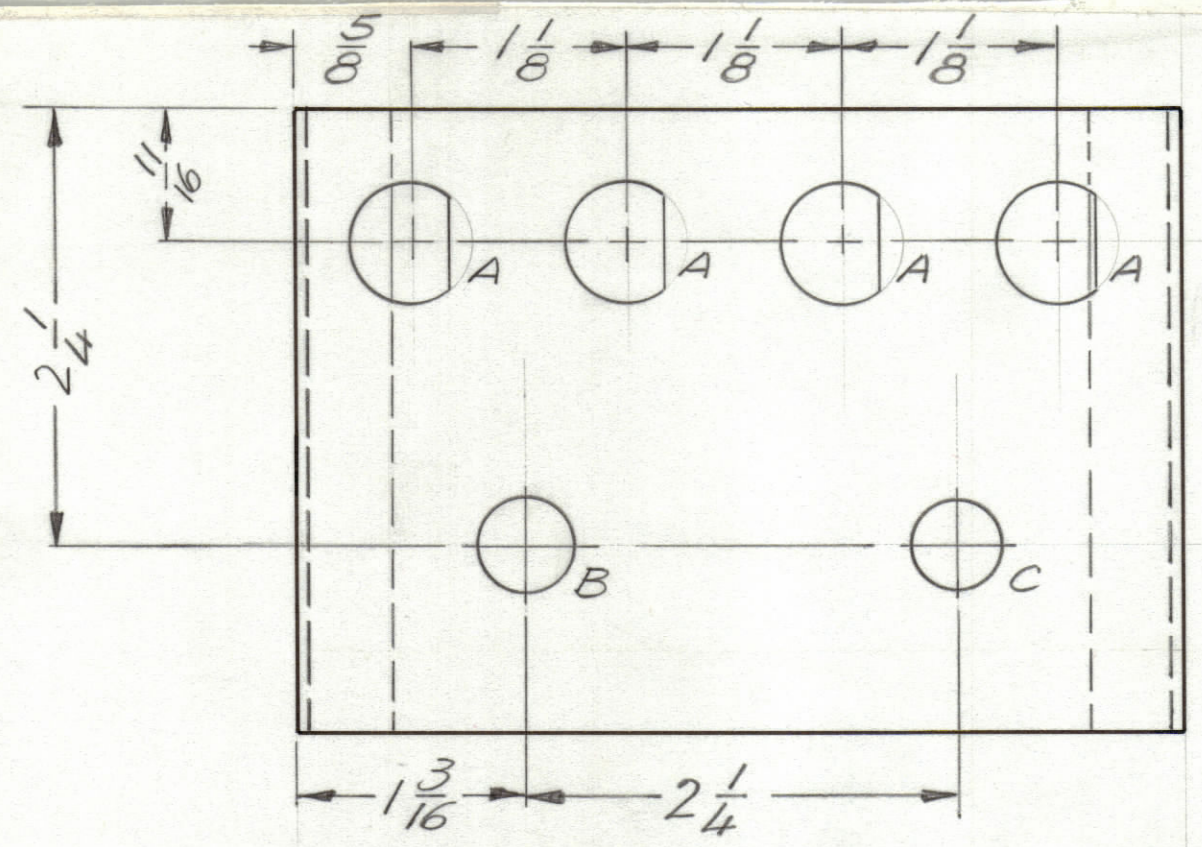
4

3

2

1

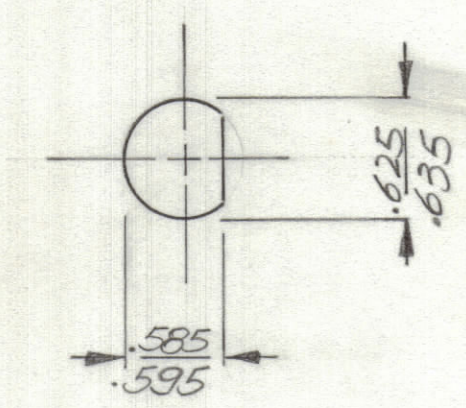
| REVISIONS | | | | | | |
|-----------|-----|-------------|--------|----------|-------|-----------|
| ZONE | LTR | DESCRIPTION | DATE | E.M.N.NO | DRAFT | CHKD APPD |
| | A | REDRAWN | 3/3/72 | 20543 | GE | EP EP |



HOLE DESCRIPTION REQ.

- A — SEE DETAIL — 4
- B — 1/2 DIA. — 1
- C — 15/32 DIA. — 1
- D — .191-.194 DIA. — 4

BOTTOM VIEW
HOLES A, B, & C
OMITTED FOR CLARITY



'A' HOLE DETAIL

- UNLESS OTHERWISE SPECIFIED:
- USE MATERIAL THICKNESS FOR MAXIMUM RADIUS ON ALL BENDS.
 - ALL ANGULAR BENDS 90 DEGREES.
 - REMOVE ALL BURRS AND SHARP EDGES.
 - MOUNT INSERTS AFTER FINISHING.

| 1 | AX 5130 | |
|-------------|---------------|-----------|
| QTY / UNIT | MODEL USED ON | ASS'Y NO. |
| APPLICATION | | |
| | CODE | |

NOTICE TO PERSONS RECEIVING THIS DRAWING
THE TECHNICAL MATERIEL CORPORATION claims proprietary right in the material disclosed hereon. This drawing is issued in confidence for engineering information only and may not be reproduced or used to manufacture anything shown hereon without permission from THE TECHNICAL MATERIEL CORPORATION to the user. This drawing is loaned for mutual assistance and is subject to recall at any time.

REF. LD 24.70

| | |
|---|-----------|
| UNLESS OTHERWISE SPECIFIED DIMENSIONS ARE IN INCHES AND INCLUDE CHEMICALLY APPLIED OR PLATED FINISHES | |
| TOLERANCES ON | |
| DECIMALS | FRACTIONS |
| .X ± .05 | ± 1/64 |
| .XX ± .01 | ANGLES |
| .XXX ± .005 | ± 0° -30' |
| MATERIAL .064 ALUM | |
| 5052 H32 | |
| FINISH | |
| S404 YEL. IRIDITE | |

| 4 | 1 | NT129-0632-4 | NUT PLAIN ROUND | D | | |
|-----------------------|------|--------------|--|-----------------|---------|-------|
| QTY. REQ. | ITEM | PART NO. | DESCRIPTION | SYMBOL | | |
| F.B. LIST OF MATERIAL | | | | | | |
| FINAL APPROVAL | | DATE | THE TECHNICAL MATERIEL CORP. MAMARONECK, NEW YORK | | | |
| <i>R. J. Tuller</i> | | 4/3/72 | | | | |
| MECH. DES. | | DATE | | | | |
| <i>R. J. Tuller</i> | | 4/3/72 | | | | |
| ELECT. DES. | | DATE | PLATE, FUSE & SWITCH MTG. | | | |
| CHECKED | | DATE | | | | |
| <i>GE</i> | | 3/3/72 | | | | |
| DRAWN | | DATE | SIZE | CODE IDENT. NO. | DWG NO. | ISSUE |
| | | | C | 82679 | MS 6209 | A |
| SCALE 1:1 | | | SHEET | | OF | |

4

3

2

1

MS 6209
A
B

A