

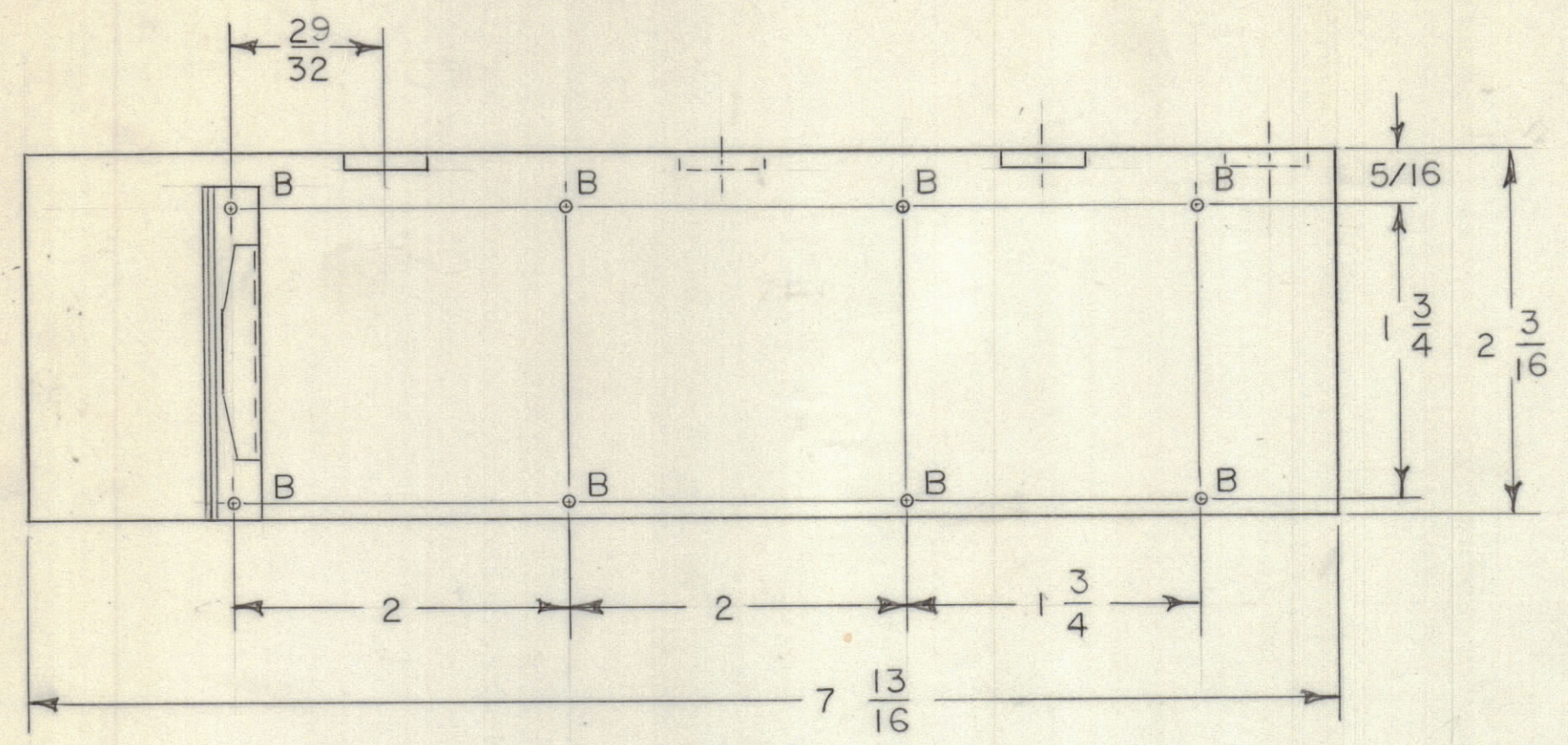
4

3

2

1

REVISIONS					DATE	APPROVED
E.M.N.NO	DRAFT	CHKD	ZONE	LTR	DESCRIPTION	
	RF			X	EXP RELEASE	3-10-71
	Q			Ø	ORIGINAL RELEASE FOR PRODUCTION	6/18/71 P.E.D.

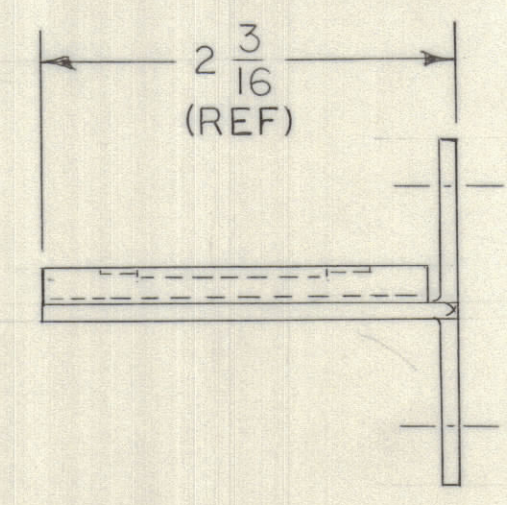
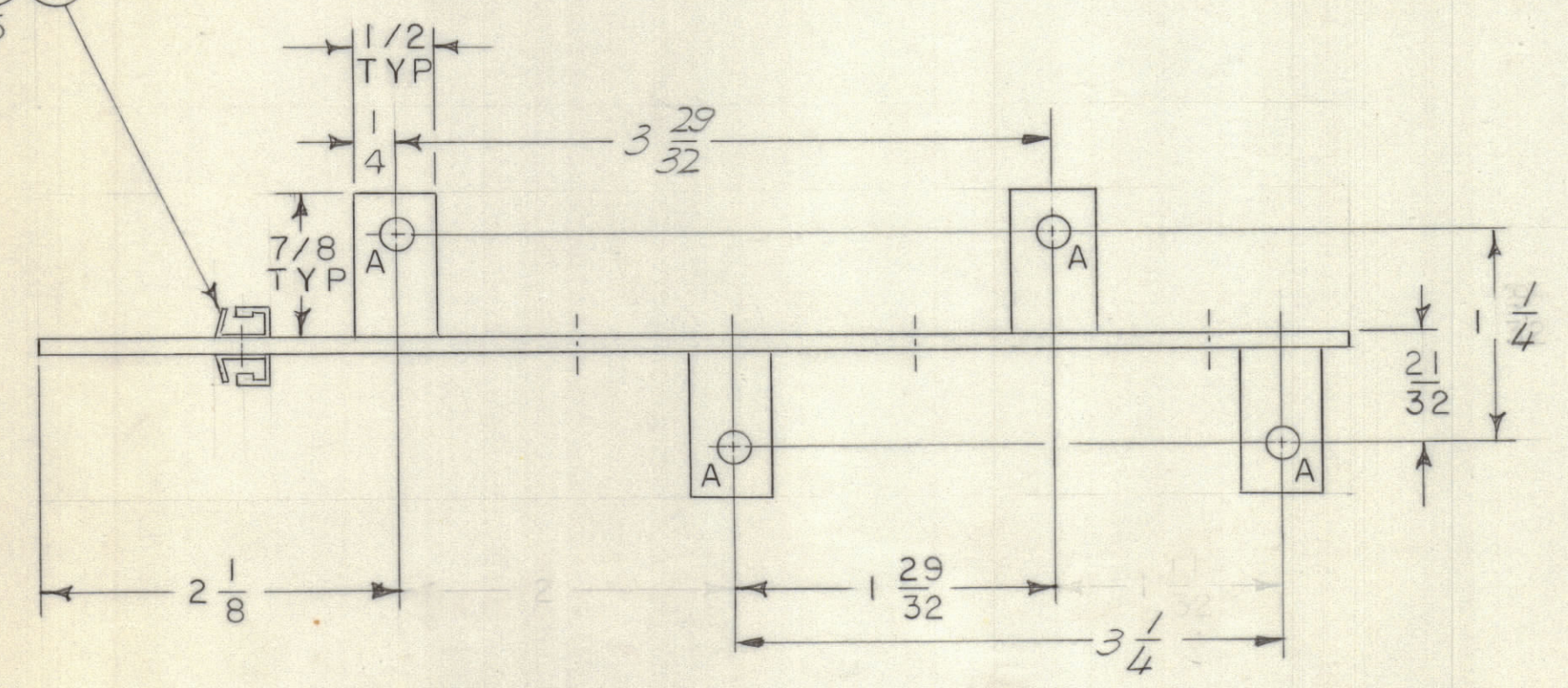


HOLE	DESCRIPTION	REQD
A	3/16 DIA	4
B	1/16 DIA	8

NOTES:

- UNLESS OTHERWISE SPECIFIED:
1. USE MATERIAL THICKNESS FOR MAXIMUM RADIUS ON ALL BENDS.
 2. ALL ANGULAR BENDS 90 DEGREES.
 3. REMOVE ALL BURRS AND SHARP EDGES.
 4. MOUNT INSERTS AFTER FINISHING.
 5. RIVET 8 CLIPS BACK TO BACK AS SHOWN.

SEE (2) (1) NOTE 5



QTY. REQ.	ITEM	PART NO.	DESCRIPTION	SYMBOL
8	2	EY 100-4	EYELET FLAT FLANGE	B
8	1	CU 157-2	RETAINER, P.C. BOARD	B

F. BUDETTI LIST OF MATERIAL

FINAL APPROVAL *[Signature]* DATE 6/18/71

MECH. DES. *[Signature]* DATE 6-18-71

ELECT. DES. *[Signature]* DATE 6-18-71

CHECKED DATE

DRAWN *[Signature]* DATE 3-10-71

THE TECHNICAL MATERIEL CORP.
MAMARONECK, NEW YORK

P.C. BOARD CENTER INSERT BRACKET

SIZE	CODE	IDENT NO.	DWG NO.	ISSUE
C	82679	MS 6208		Ø

SCALE 1/1 SHEET 1 OF 1

1	AX 5130	ASS'Y NO.
QTY / UNIT	MODEL USED ON	
APPLICATION		
CODE		
NOTICE TO PERSONS RECEIVING THIS DRAWING		
THE TECHNICAL MATERIEL CORPORATION claims proprietary right in the material disclosed hereon. This drawing is issued in confidence for engineering information only and may not be reproduced or used to manufacture anything shown hereon without permission from THE TECHNICAL MATERIEL CORPORATION to the user. This drawing is loaned for mutual assistance and is subject to recall at any time.		
MATERIAL .081 THK ALUM .5052 H32		
FINISH S404 YEL IRIDITE		

4

3

2

1

MS 6208