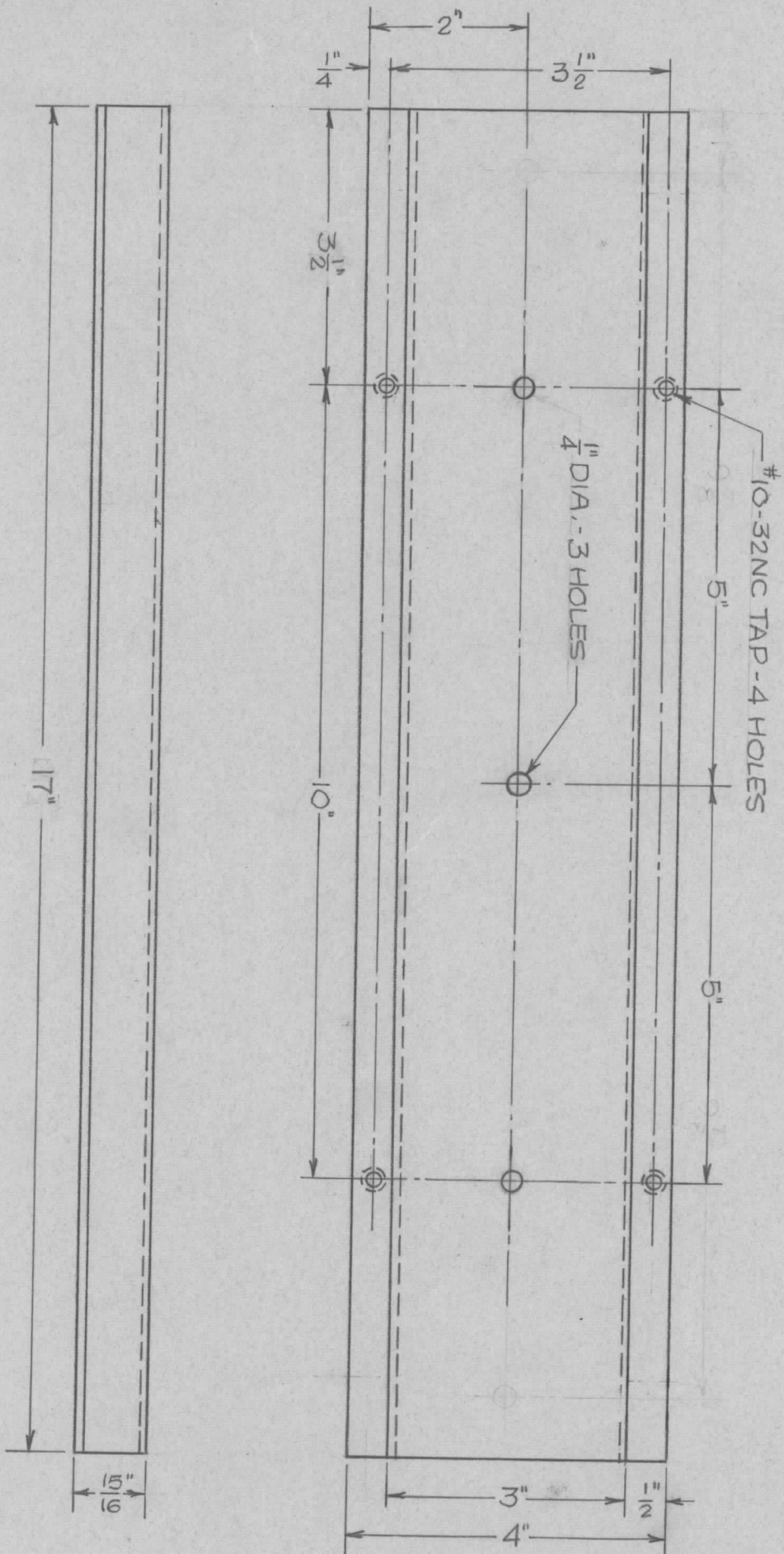


REVISIONS				
LTR	DESCRIPTION	DATE	DRAFT	CHECKED
A	CHANGED LENGTH & MOUNTING HOLES	5/23/73	PMF	AKB



NOTE:
1. ALL BENDS 90°

QTY REQ	ITEM	PART NO.	MANUFACTURER	DESCRIPTION	SYM
				THE TMC SYSTEMS AND POWER CORPORATION SPRINGFIELD, VIRGINIA	
PARTS LIST					
UNLESS OTHERWISE SPECIFIED DIMENSIONS ARE IN INCHES AND INCLUDE CHEMICALLY APPLIED OR PLATED FINISHES REMOVE ALL BURRS AND SHARP EDGES.					
TOLERANCES ON FRACTIONS ANGLES DECIMALS					
P. ENG. <i>AKB</i> DATE <i>8/2/73</i>					
D. ENG. DATE					
P. MGR. DATE					
MATERIAL 12GA (.1046) CRS.					
FINISH TMC SPEC. P4000					
DRAWN FERNANDEZ DATE 3/7/73					
CHECKED DATE					
D. ENG. DATE					
P. ENG. DATE					
P. MGR. DATE					
CHIEF, ENG. DEPT. DATE					
FINISH DATE					
TMC SPEC. P4000					
NEXT ASSY USED ON					
APPLICATION					
AX753					
AX728					
USED ON					
APPLICATION					
THE TMC SYSTEMS AND POWER CORPORATION SPRINGFIELD, VIRGINIA					
HAT SECTION					
SIZE	CODE IDENT. NO.	DWG. NO.	REV		
B	24146	M56162	A		
SCALE	NTS	SHEET		OF 1	

NOTICE TO PERSONS RECEIVING THIS DRAWING
THE TMC SYSTEMS AND POWER CORPORATION claims proprietary right in the material hereon. This drawing is issued in confidence for engineering information only and is not to be reproduced or used to manufacture anything shown hereon without the written permission of THE TMC SYSTEMS AND POWER CORPORATION. This drawing is the property of THE TMC SYSTEMS AND POWER CORPORATION and is subject to recall at any time.