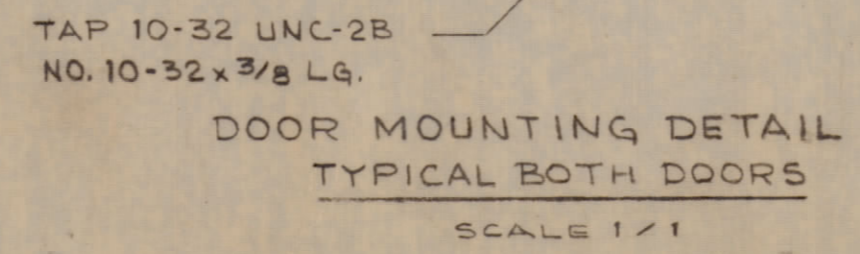
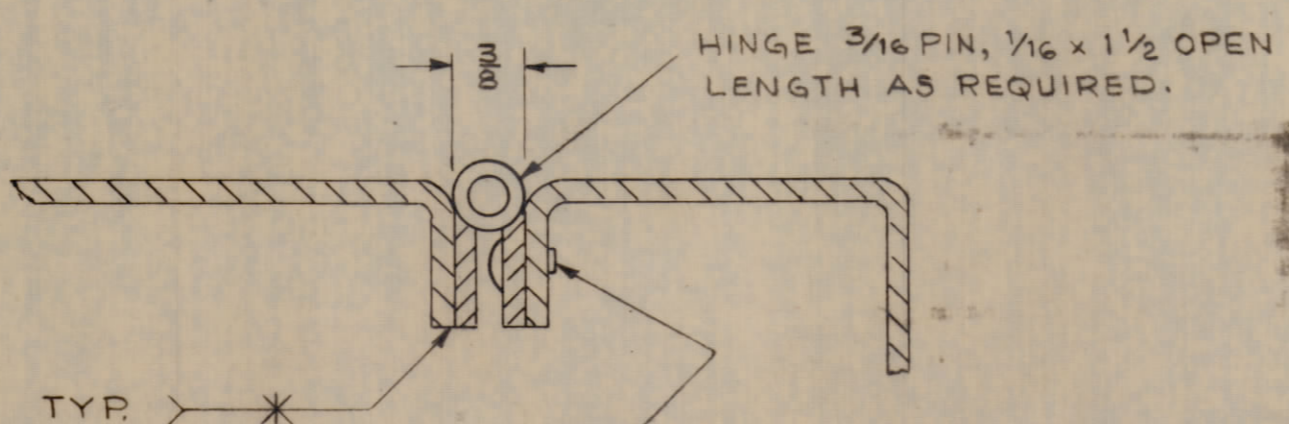
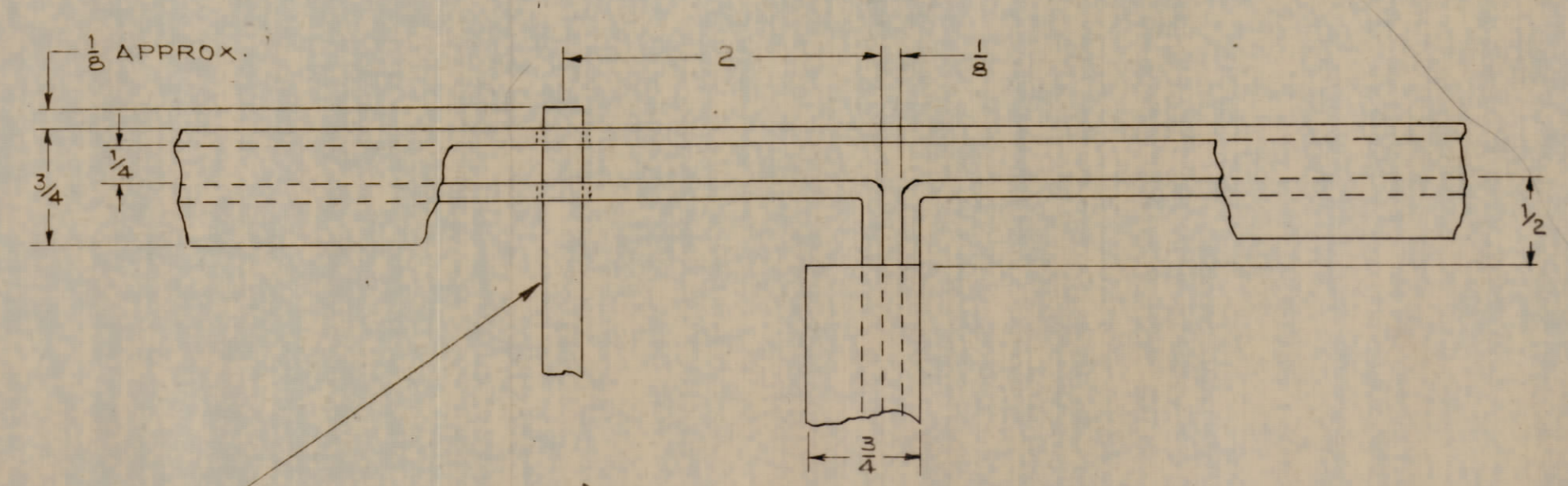
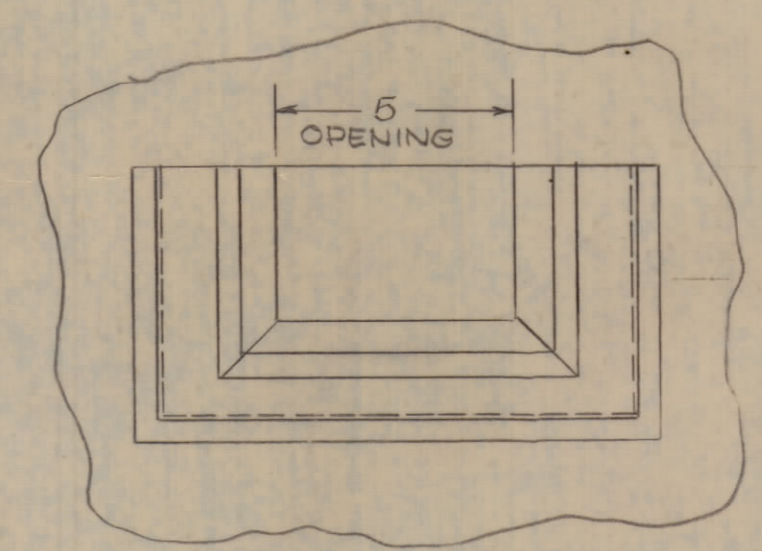
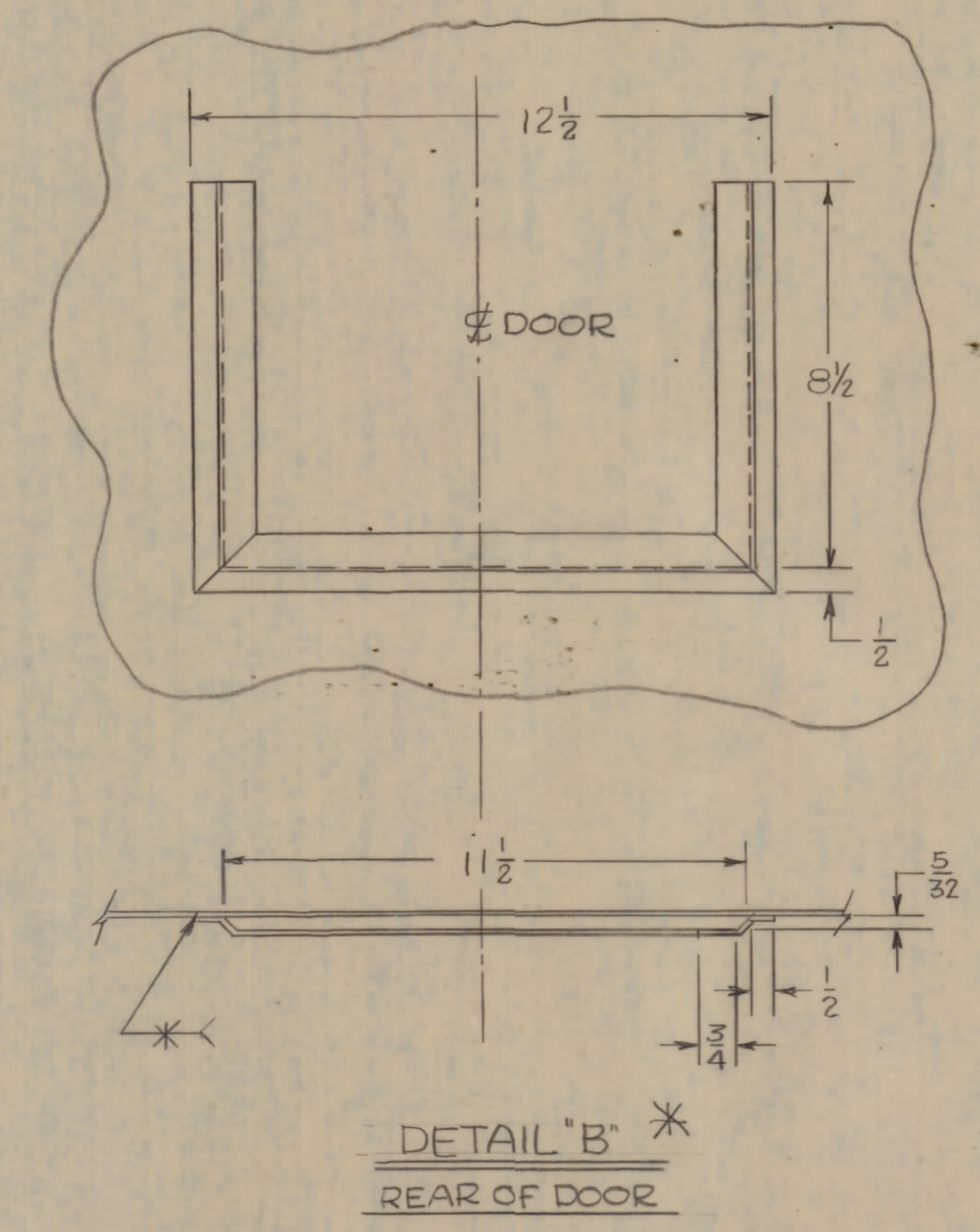
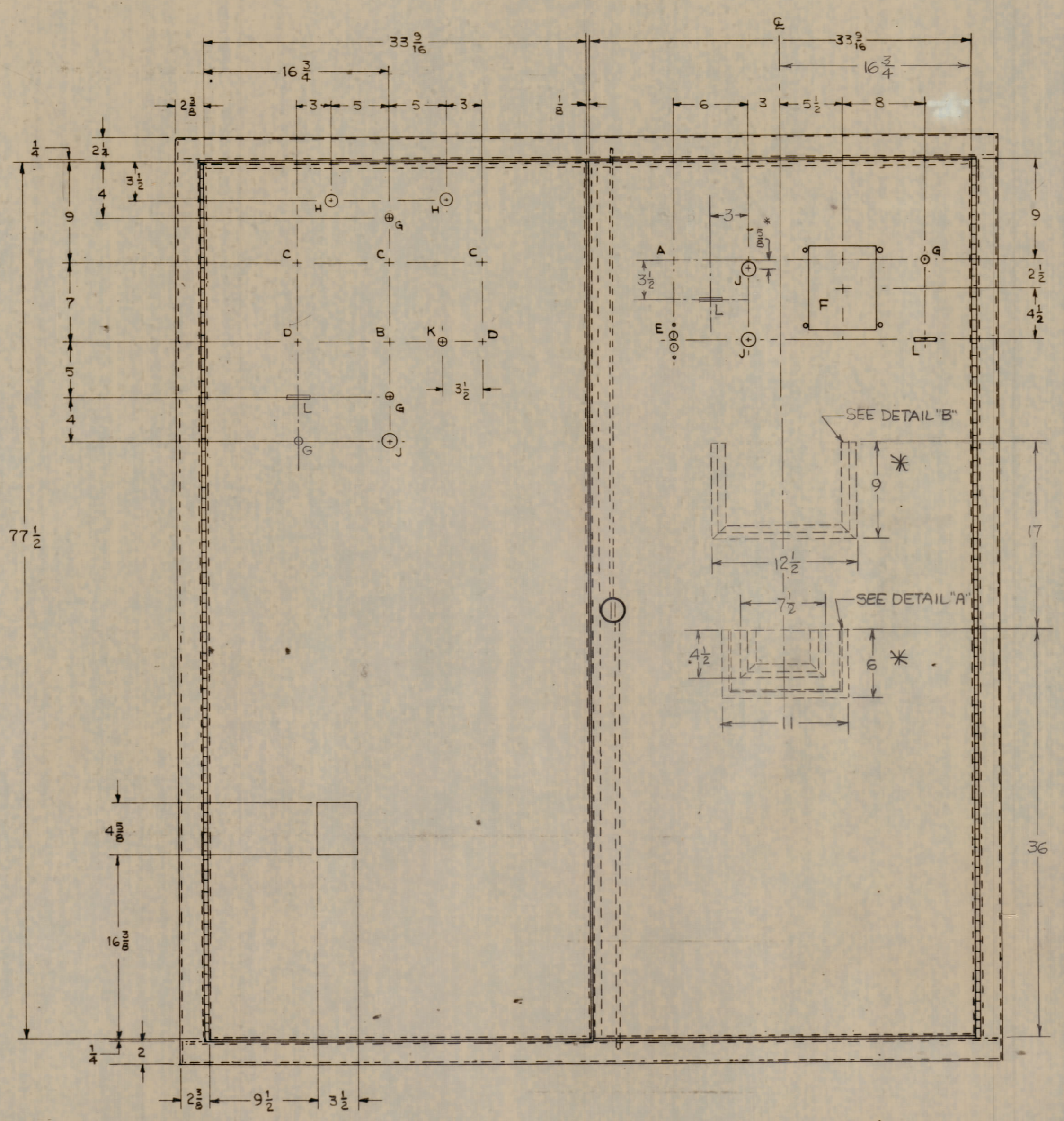
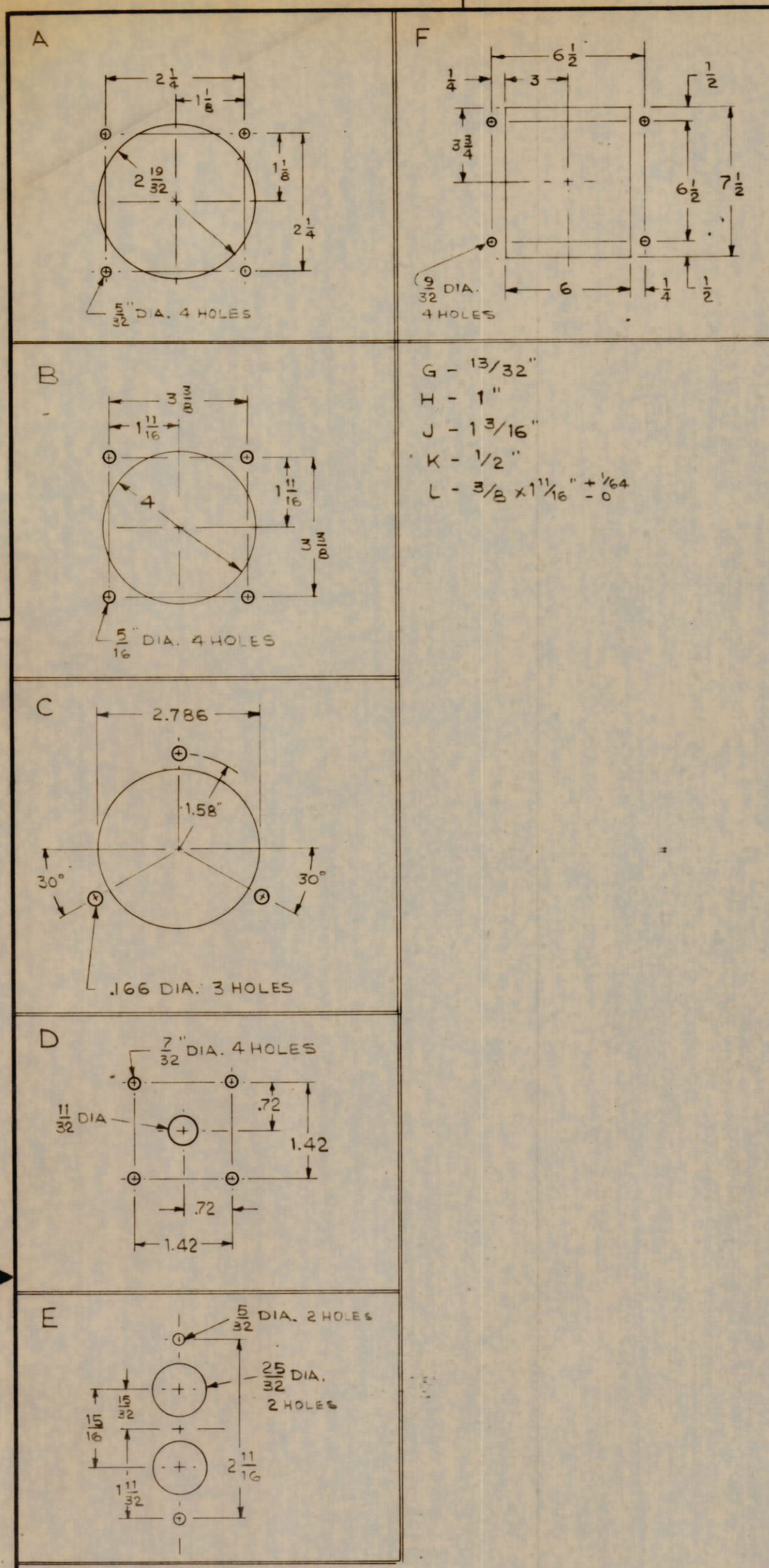


REVISIONS						
ZONE	LTR	DESCRIPTION	DATE	DRAFT	CHK'D	APPD
A		REV. AS PER ASTERISK *	11-24-72	EM		



DOOR LATCH DIMENSION CAN CHANGE, LATCH IS TO BE PROVIDED AND FITTED BY CABINET MANUFACTURE.

QTY REQ	QTY REQ	QTY REQ	ITEM	PART NO.	MANUFACTURER	DESCRIPTION	SYM

INTERPRET DRAWING PER LISTED DOCUMENTS		UNLESS OTHERWISE SPECIFIED DIMENSIONS ARE IN INCHES AND INCLUDE CHEMICALLY APPLIED OR PLATED FINISHES REMOVE ALL BURRS AND SHARP EDGES	
DRAWN	MITCH	DATE	10-23-72
CHECKED		DATE	
D. ENG.		DATE	
P. ENG.	erb	DATE	Nov 72
P. MGR.		DATE	
CHIEF, ENG. DEPT.		DATE	

PARTS LIST			
THE TMC SYSTEMS AND POWER CORPORATION SPRINGFIELD, VIRGINIA			
CONTROL CABINET FABRICATION ASSEMBLY 277/480 VOLT SYSTEM, FAA			
SIZE	CODE IDENT NO	DWG. NO.	REV
D	24146	MSG139	A
SCALE	SHEET 1 OF 3		

NOTICE TO PERSONS RECEIVING THIS DRAWING
 THE TMC SYSTEMS AND POWER CORPORATION claims proprietary right in the material disclosed hereon. This drawing is issued in confidence for engineering information only and may not be reproduced or used to manufacture anything shown hereon without permission from THE TMC SYSTEMS AND POWER CORPORATION to the user. This drawing is loaned for mutual assistance and is subject to recall at any time.