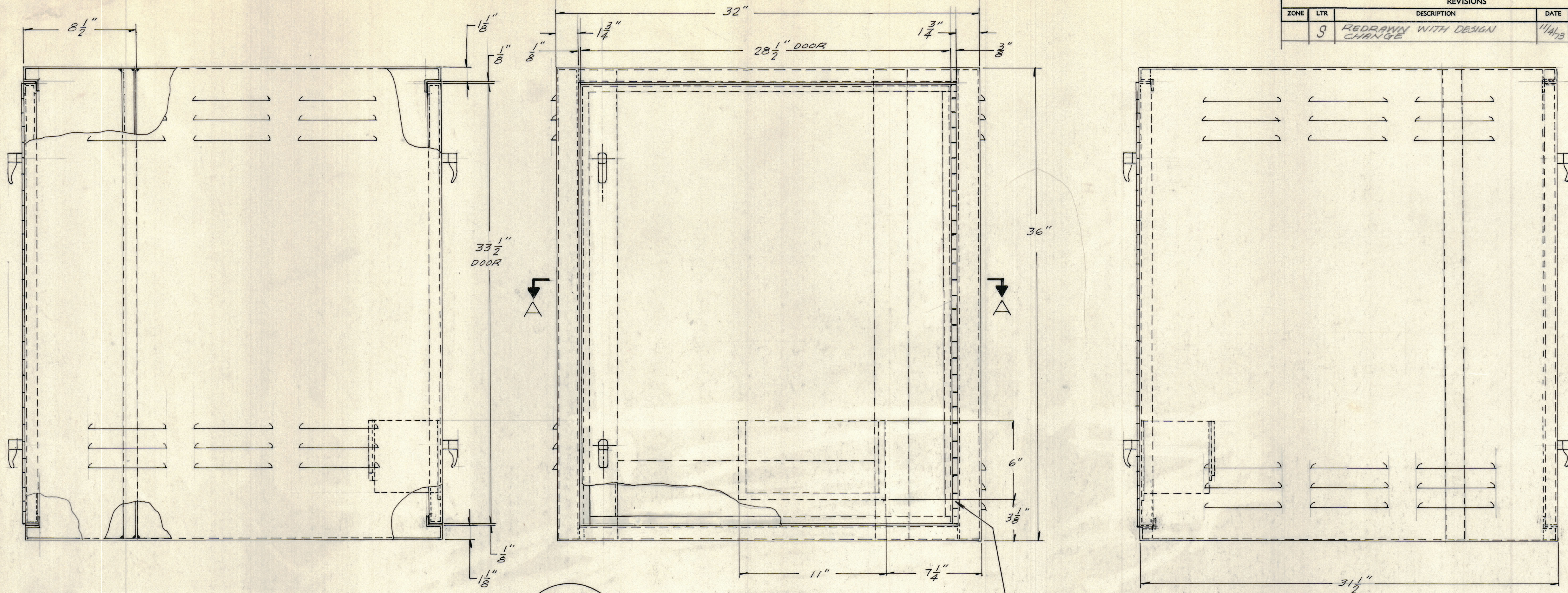


REVISIONS						
ZONE	LTR	DESCRIPTION	DATE	DRAFT	CHK'D	APPD
	9	REDRAWN WITH DESIGN CHANGE	11/14/73	ESF	24	



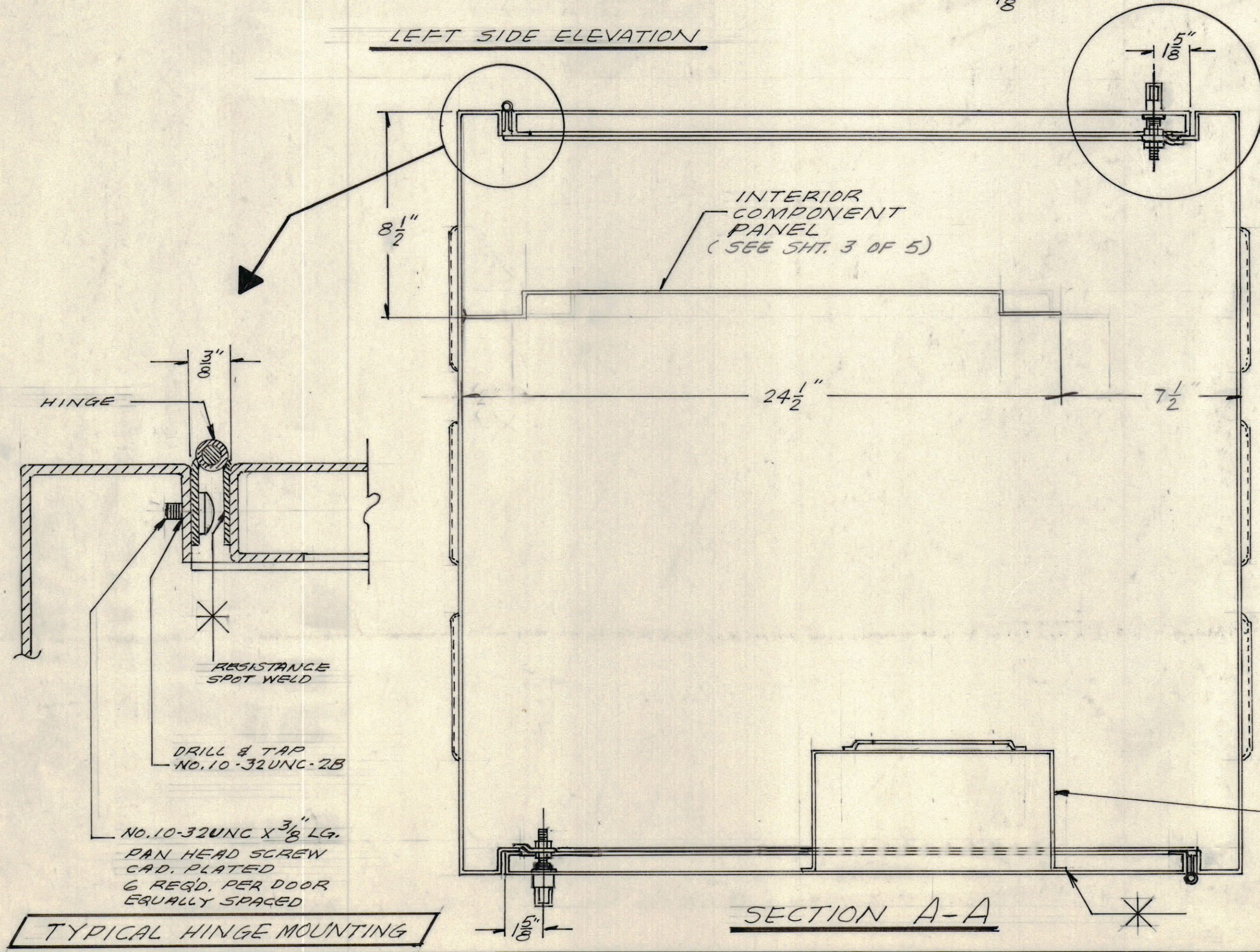
LEFT SIDE ELEVATION

FRONT ELEVATION

RIGHT SIDE ELEVATION

STEEL HINGE
1 1/2" (OPEN) X .062
WITH 3/16" DIA. PIN.
LENGTH = 33 1/2"

- NOTES:
1. WELD ALL JOINTS IN ACCORDANCE WITH AWS STANDARDS FOR WELDING
 2. ALL WELDS TO BE PROPERLY CLEANED
 3. ALL SURFACE WELDS TO BE CLEANED AND GROUND SMOOTH.
 4. REMOVE ALL BURRS AND SHARP EDGES
 5. CLEAN, PRIME AND PAINT IN ACCORDANCE WITH TMC SPECIFICATION P4000



SECTION A-A

TYPICAL DOOR FASTENER MOUNTING

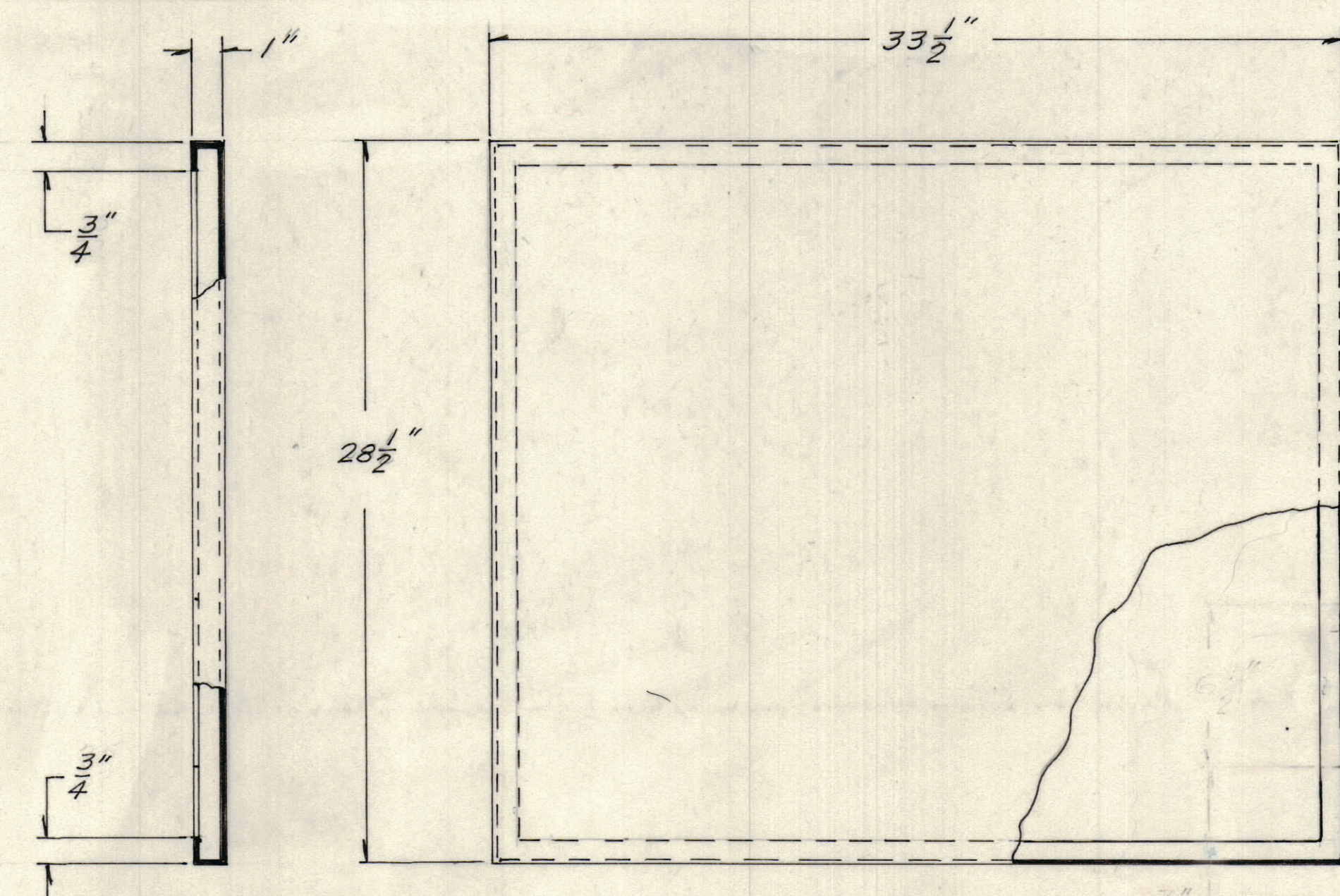
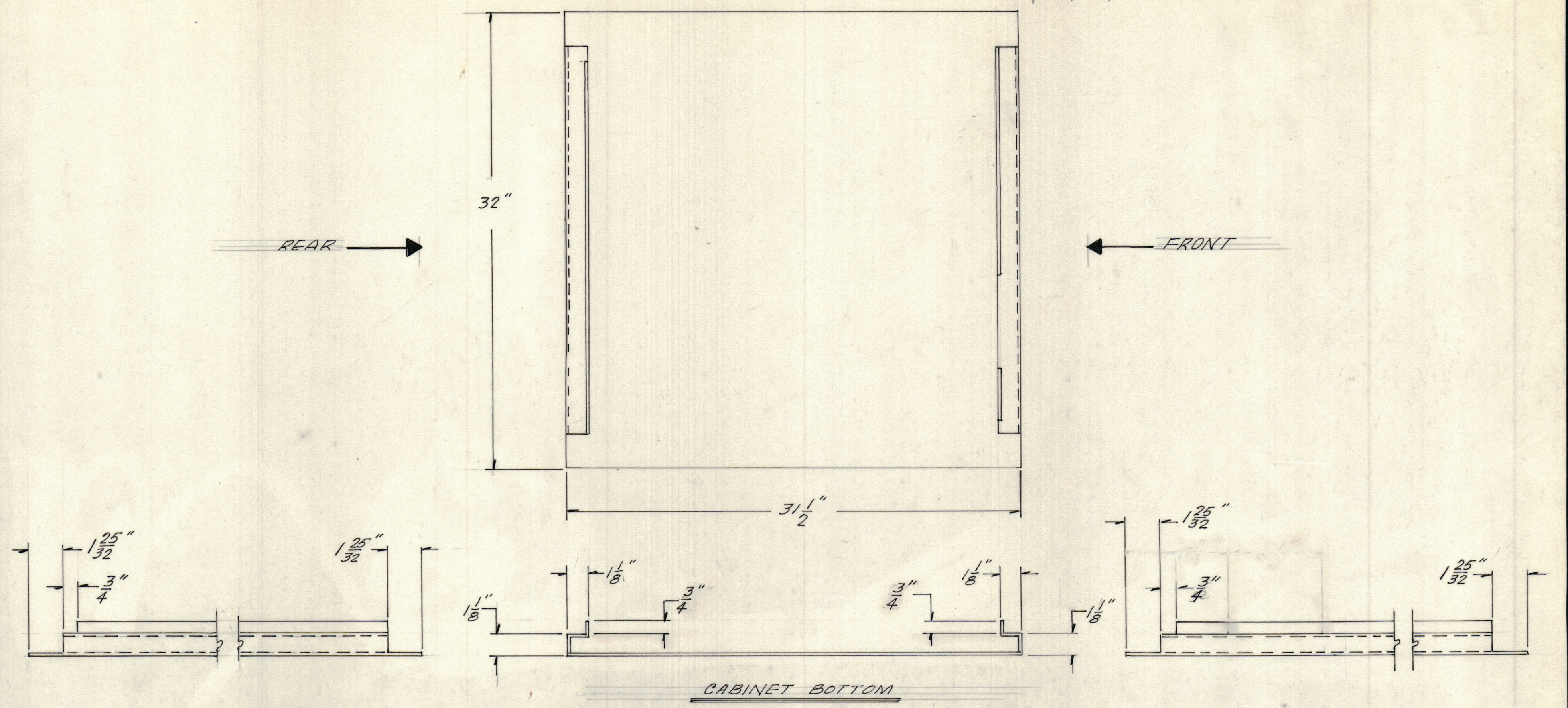
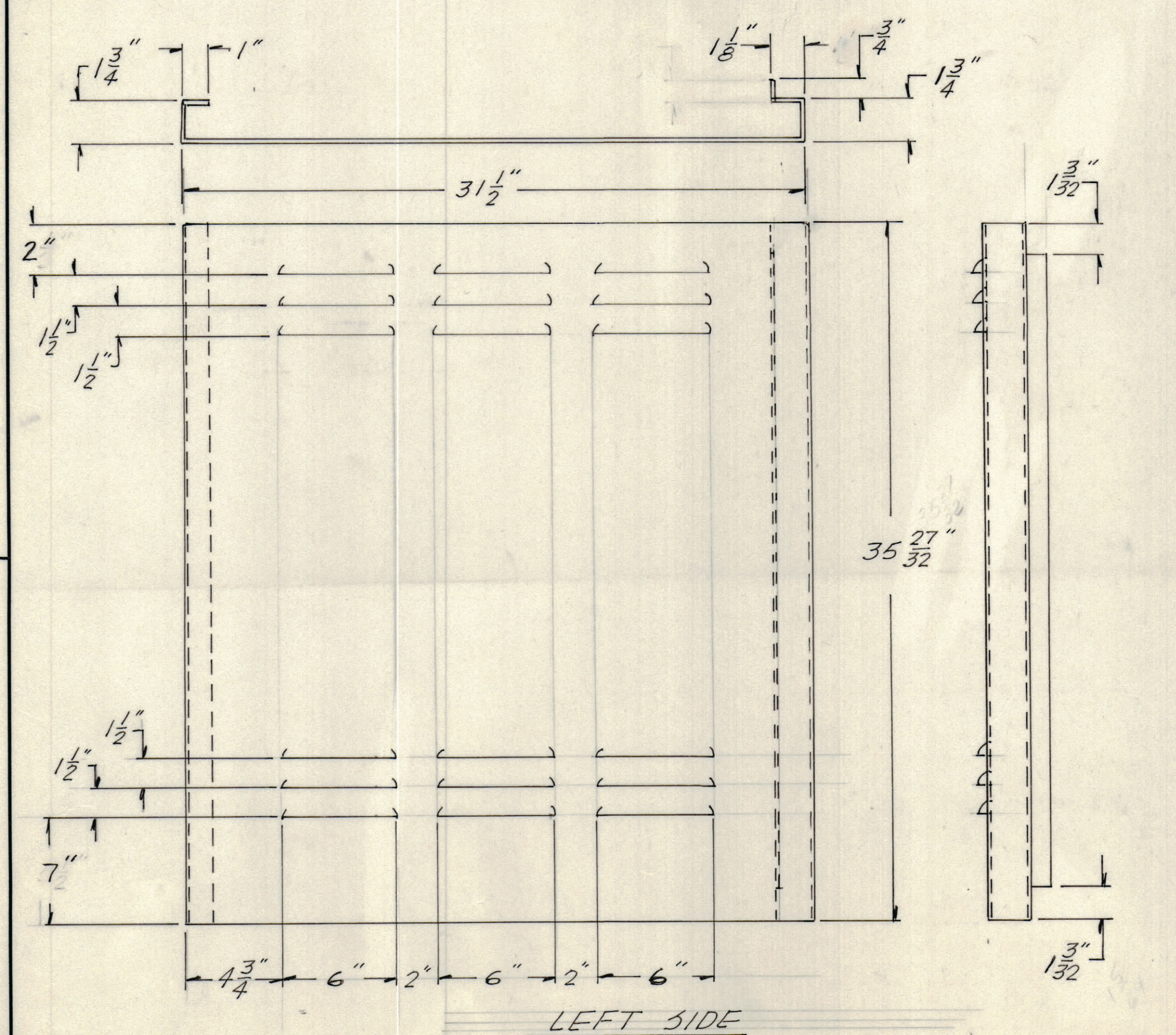
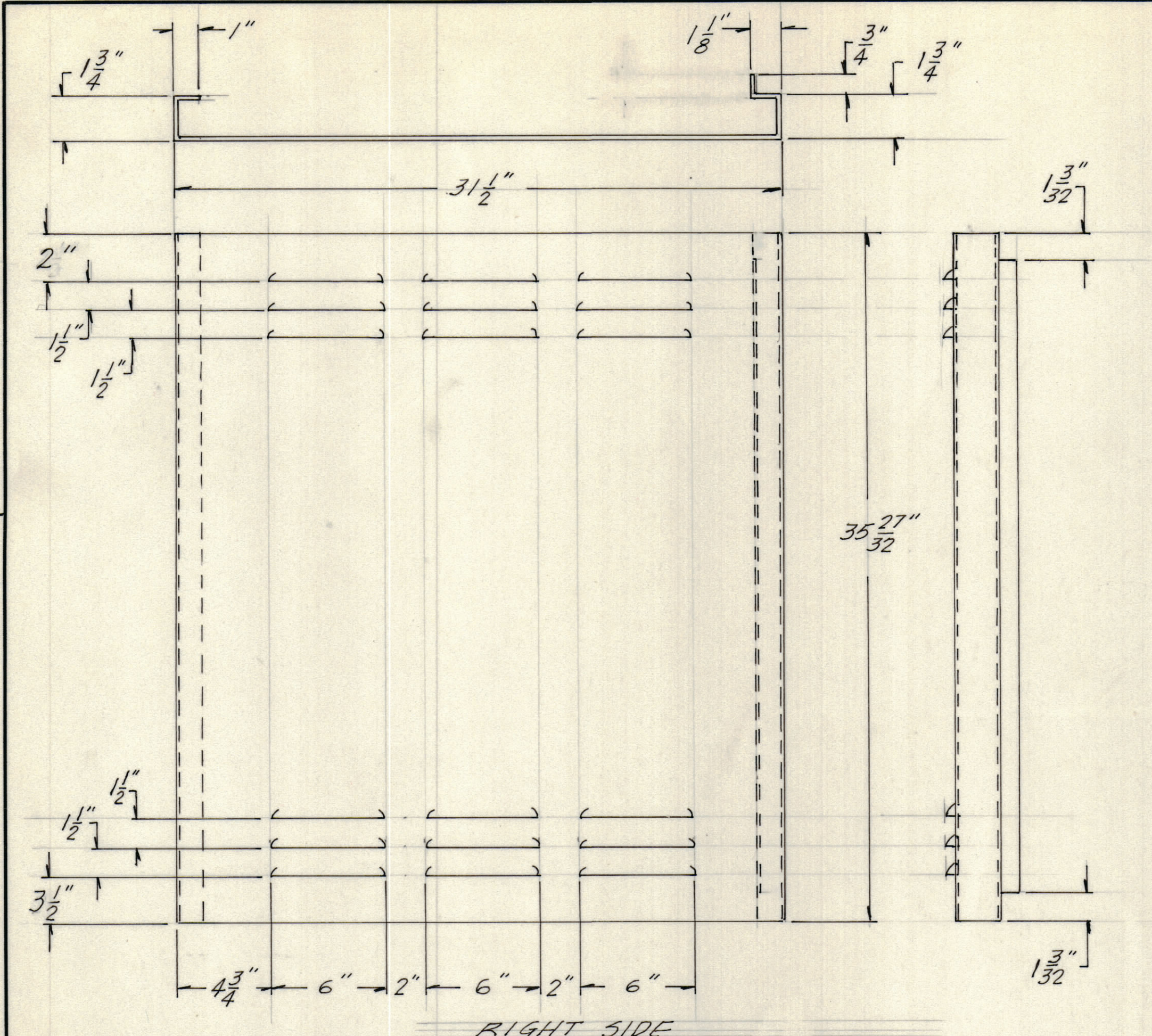
TYPICAL HINGE MOUNTING

MANUAL / GARD
HOLDER (SEE SHT. 3 OF 5)
WELD TO INTERIOR
SIDE OF FRONT
DOOR. (SEE FRONT
ELEVATION FOR
LOCATION

INTERPRET DRAWING PER LISTED DOCUMENTS		UNLESS OTHERWISE SPECIFIED DIMENSIONS ARE IN INCHES AND INCLUDE CHEMICALLY APPLIED OR PLATED FINISHES REMOVE ALL BURRS AND SHARP EDGES		DRAWN FRAMPTON DATE 11-8-73	THE TMC SYSTEMS AND POWER CORPORATION SPRINGFIELD, VIRGINIA
DIMENSIONING MIL - STD - 8 SURFACE ROUGHNESS MIL - STD - 10 ABBREVIATIONS MIL - STD - 12 ELECTRONIC SYMBOLS MIL - STD - 15 WELDING SYMBOLS JAN - STD - 19		TOLERANCES ON FRACTIONS ANGLES DECIMALS +1/-32 1/2°		CHECKED 24 DATE 11-6-73	
NEXT ASSY USED ON APPLICATION		MATERIAL .075 (14 GA.) COLD ROLLED STEEL		D. ENG. WA DATE 12-7-73	
NOTICE TO PERSONS RECEIVING THIS DRAWING THE TMC SYSTEMS AND POWER CORPORATION claims proprietary right in the material disclosed herein. This drawing is issued in confidence for engineering information only and may not be reproduced or used to manufacture anything shown hereon without permission from THE TMC SYSTEMS AND POWER CORPORATION to the user. This drawing is loaned for mutual assistance and is subject to recall at any time.		FINISH SEE NOTE 5		P. ENG. ESF DATE 12-10-73	
				P. MGR. DATE	

QTY REQ	QTY REQ	QTY REQ	ITEM	PART NO.	MANUFACTURER	DESCRIPTION	SYM
PARTS LIST							
THE TMC SYSTEMS AND POWER CORPORATION SPRINGFIELD, VIRGINIA							
CONTROL CABINET FABRICATION ASSEMBLY							
SIZE	CODE IDENT NO	DWG. NO.	REV				
D	24146	MS6133	S				
SCALE 1/4" = 1"			SHEET 1 OF 5				

REVISIONS						
ZONE	LTR	DESCRIPTION	DATE	DRAFT	CHK'D	APPD
S		SEE SHEET 1 OF 5	11/4/73	ESF	ES	

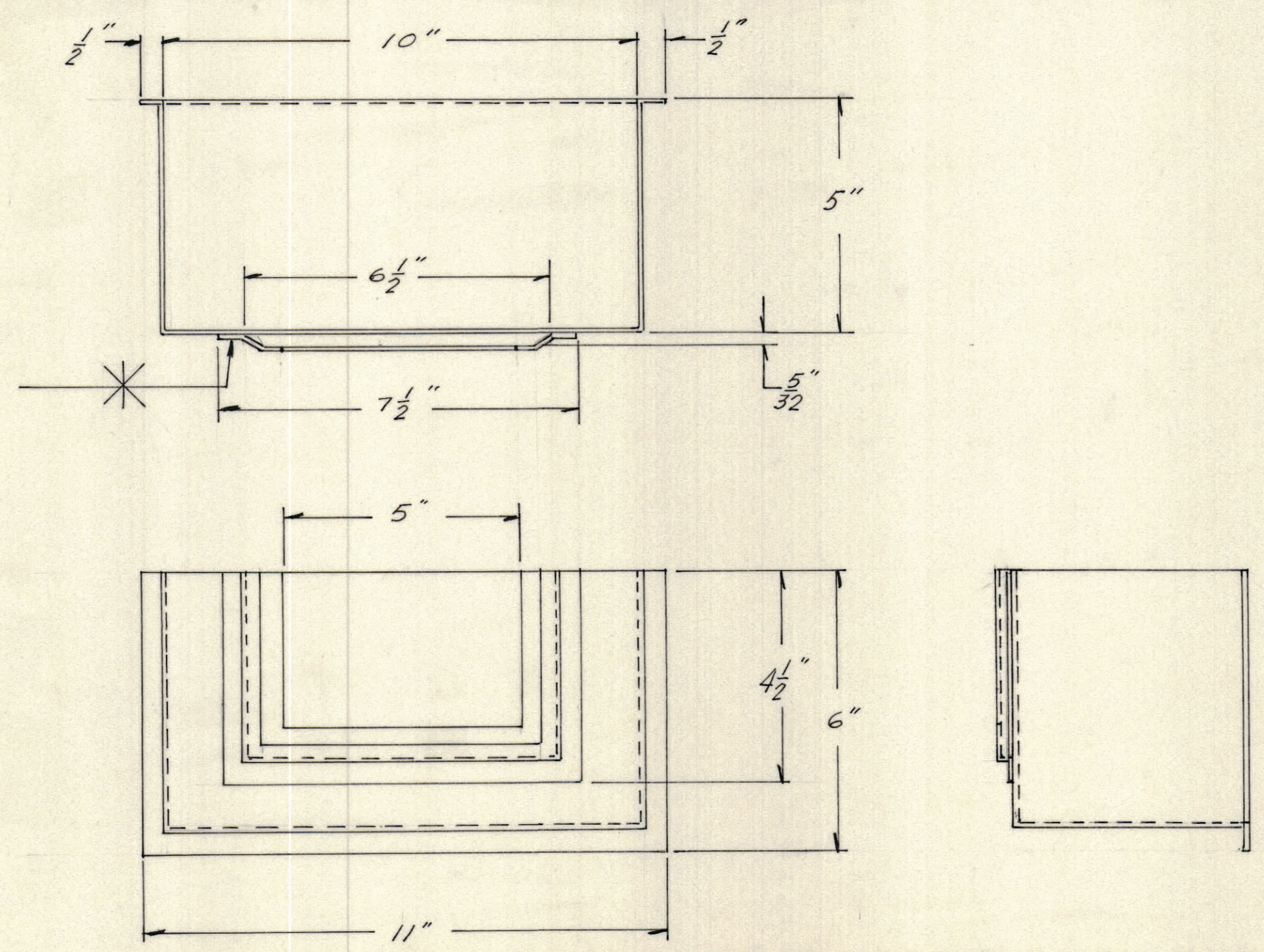
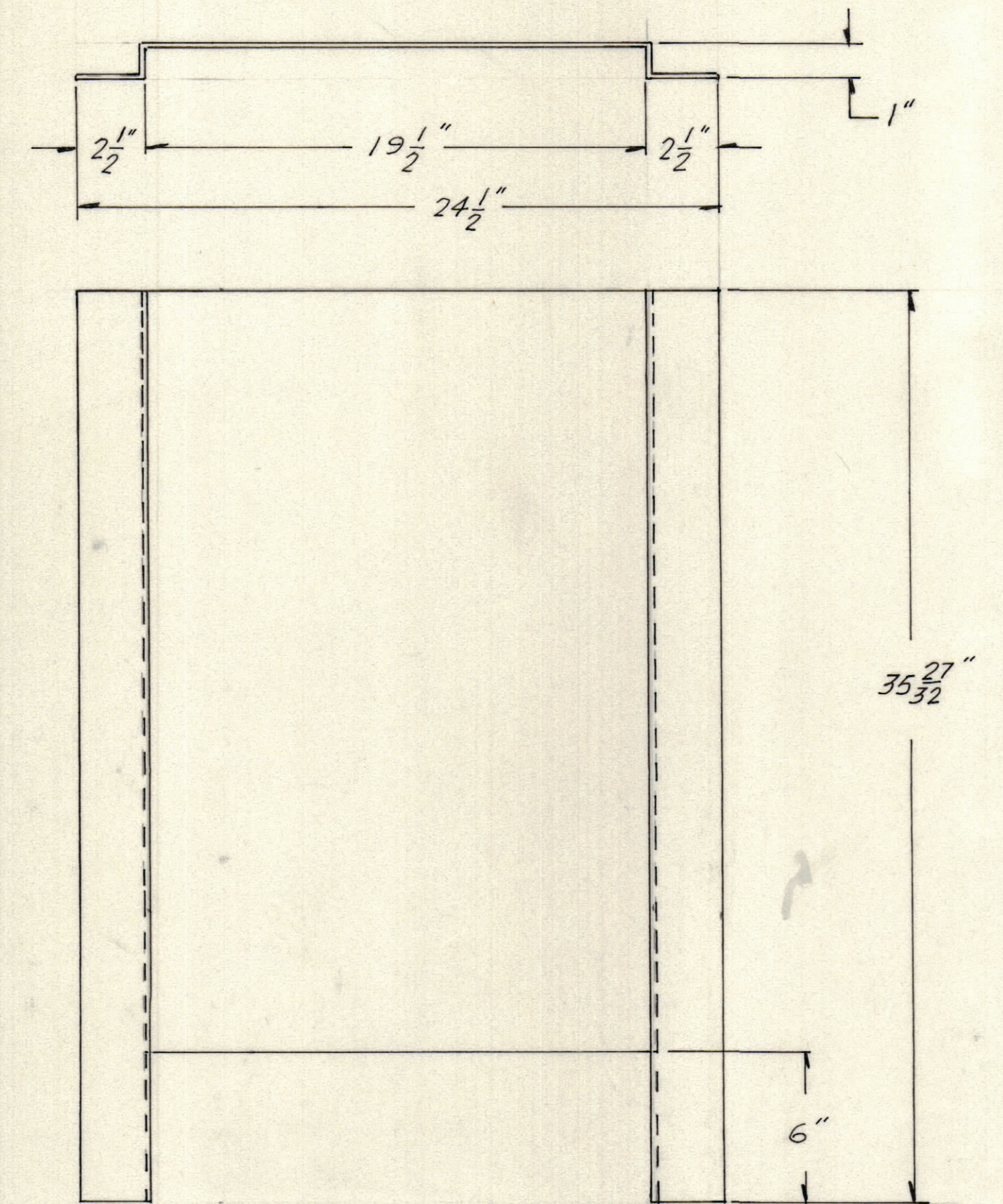
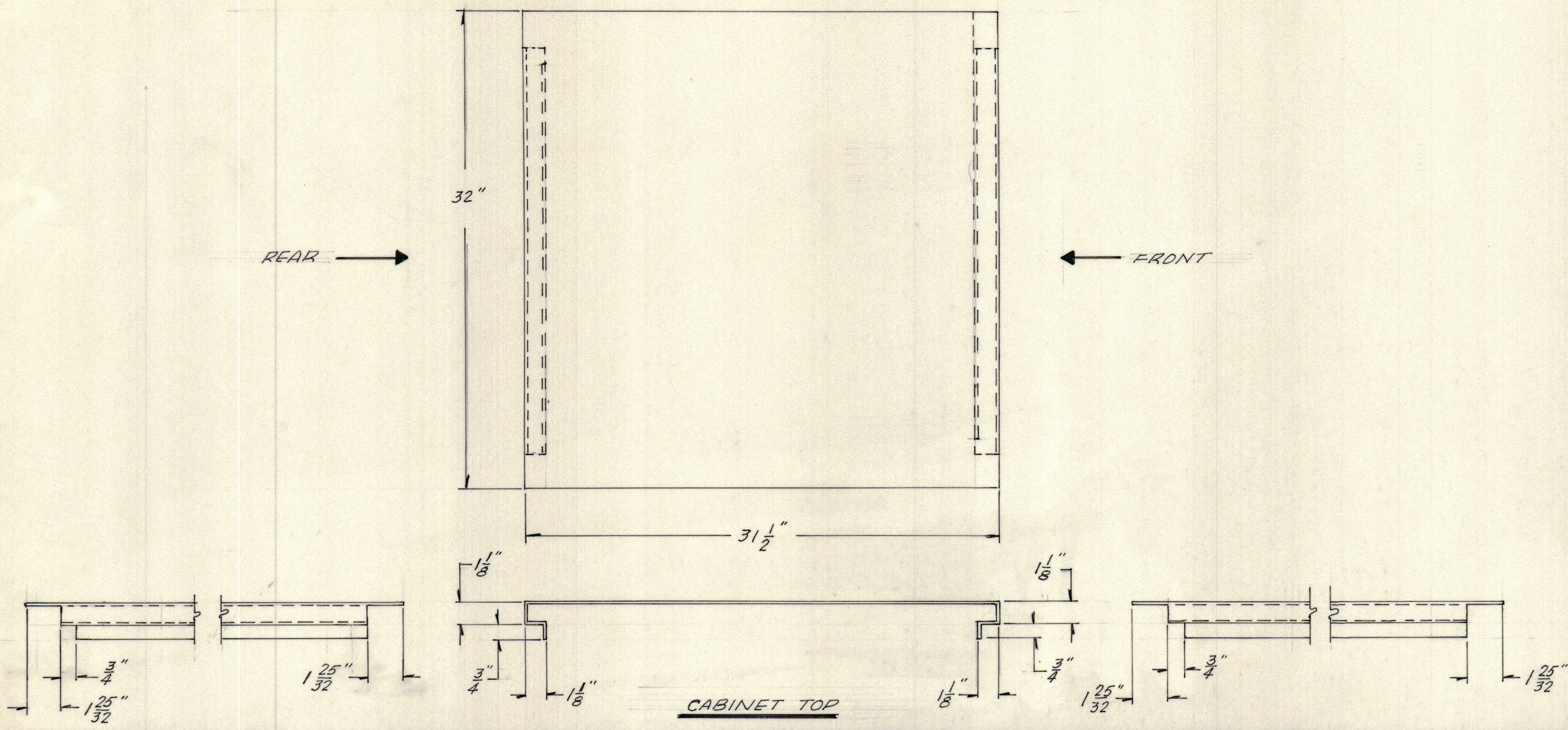


NOTE:
FRONT CABINET DOOR ONLY TO BE NOTCHED OUT AS SHOWN

QTY REQ	QTY REQ	QTY REQ	ITEM	PART NO.	MANUFACTURER	DESCRIPTION	SYM
PARTS LIST							
						THE TMC SYSTEMS AND POWER CORPORATION	
						SPRINGFIELD, VIRGINIA	
						WORK DIESEL GENERATOR SET	
						CONTROL CABINET	
						FABRICATED PARTS DETAILS	
						SIZE	REV
						D 24146	S
						DWG. NO. MS6133	
						SCALE None	SHEET 2 OF 5

INTERPRET DRAWING PER LISTED DOCUMENTS DIMENSIONING MIL - STD - 8 SURFACE ROUGHNESS MIL - STD - 10 ABBREVIATIONS MIL - STD - 12 ELECTRONIC SYMBOLS MIL - STD - 15 WELDING SYMBOLS JAN - STD - 19		UNLESS OTHERWISE SPECIFIED DIMENSIONS ARE IN INCHES AND INCLUDE CHEMICALLY APPLIED OR PLATED FINISHES REMOVE ALL BURRS AND SHARP EDGES TOLERANCES ON FRACTIONS ANGLES DECIMALS SEE SHT. 1	DRAWN EXAMPTON DATE 11-2-73 CHECKED BA DATE 11-2-73 D. ENG. MY DATE 12-7-73 P. ENG. ESF DATE 12-10-73 P. MGR. DATE CHIEF, ENG. DEPT. DATE 11-11-73
NOTICE TO PERSONS RECEIVING THIS DRAWING THE TMC SYSTEMS AND POWER CORPORATION claims proprietary right in the material disclosed hereon. This drawing is issued in confidence for engineering information only and may not be reproduced or used to manufacture anything shown hereon without permission from THE TMC SYSTEMS AND POWER CORPORATION to the user. This drawing is loaned for mutual assistance and is subject to recall at any time.		MATERIAL .075 (AGA.) COLD ROLLED STEEL FINISH	

REVISIONS						
ZONE	LTR	DESCRIPTION	DATE	DRAFT	CHK'D	APPD
S		SEE SHEET 1 OF 5	11/4/73	ESP	EF	



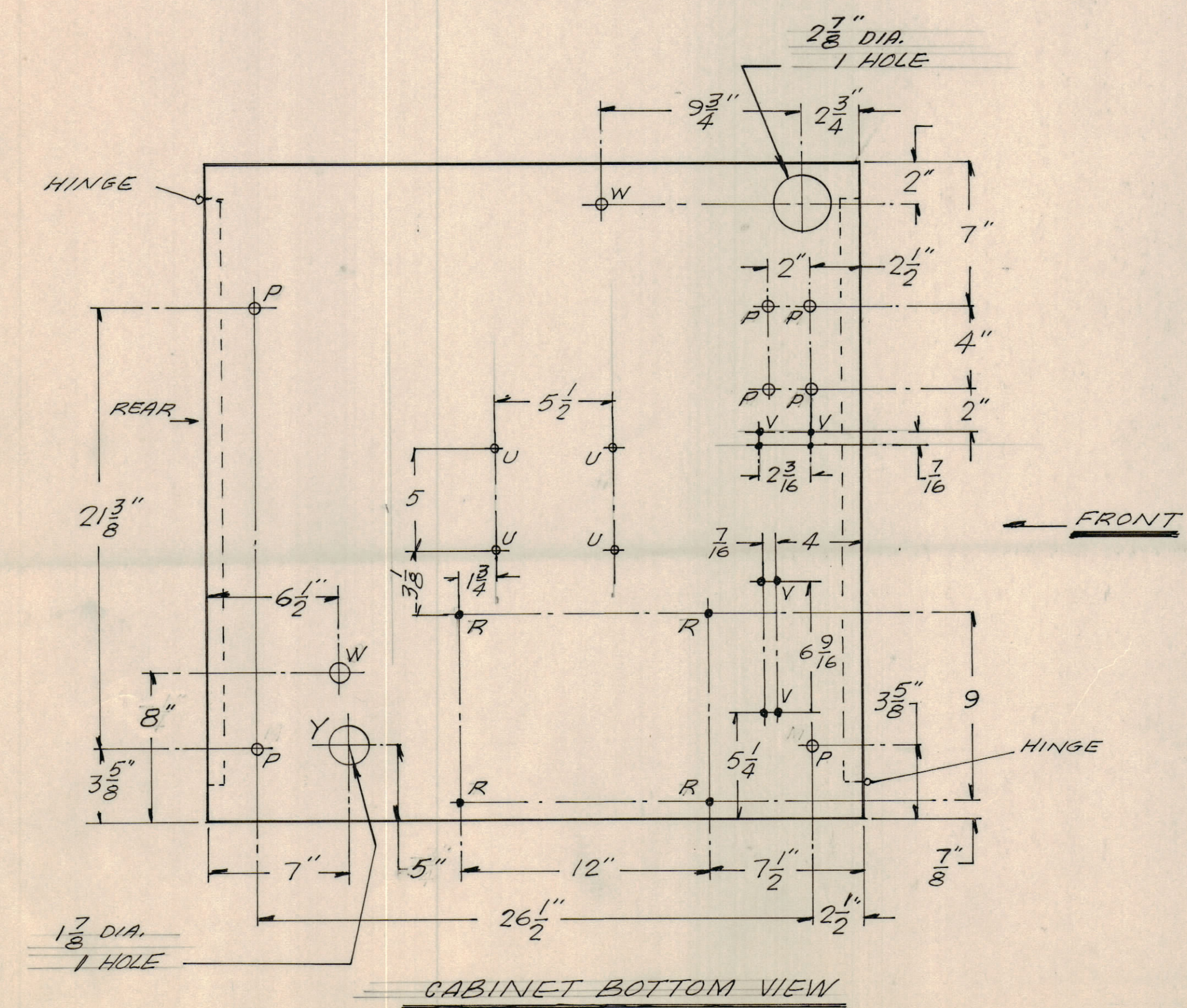
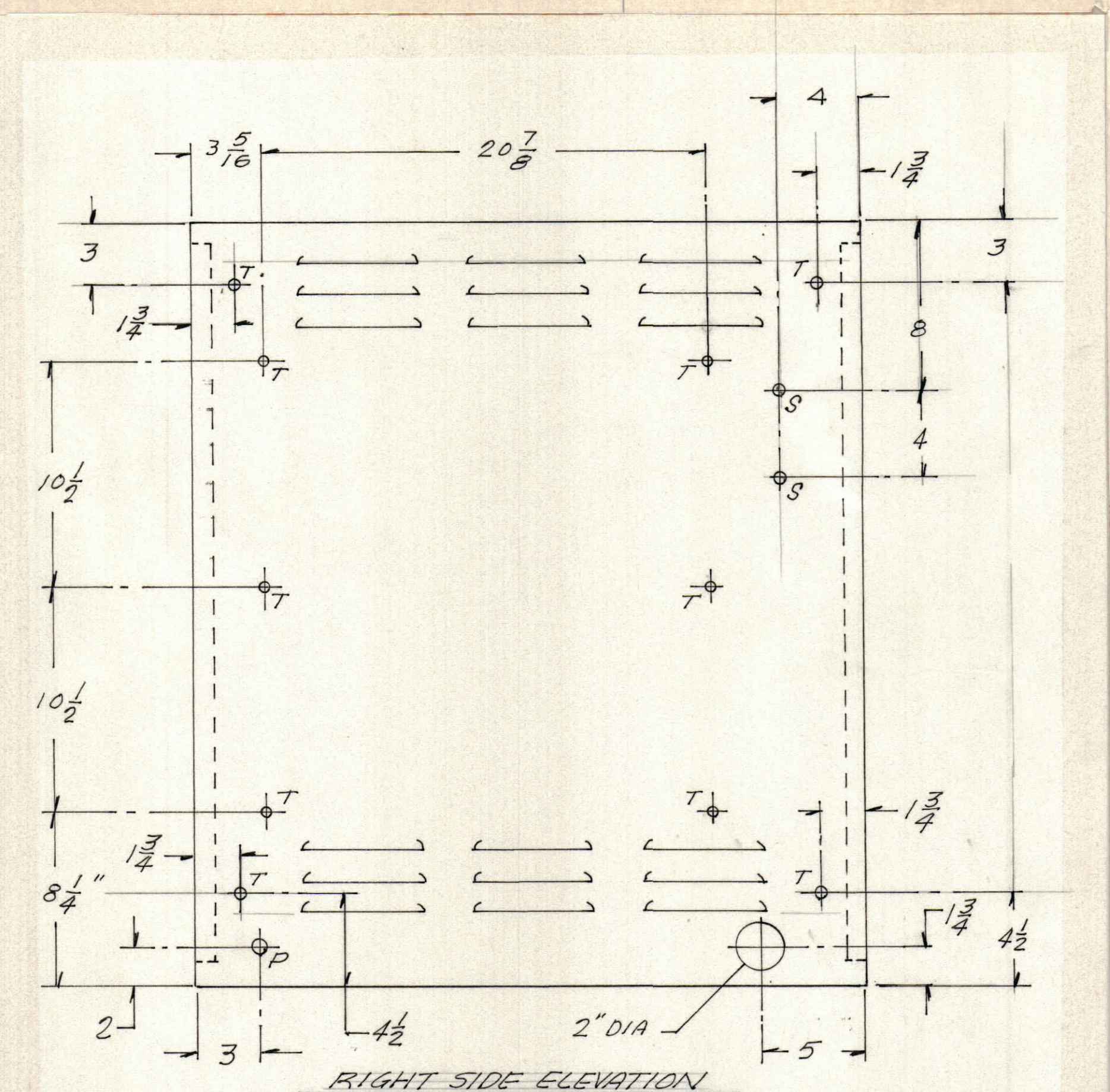
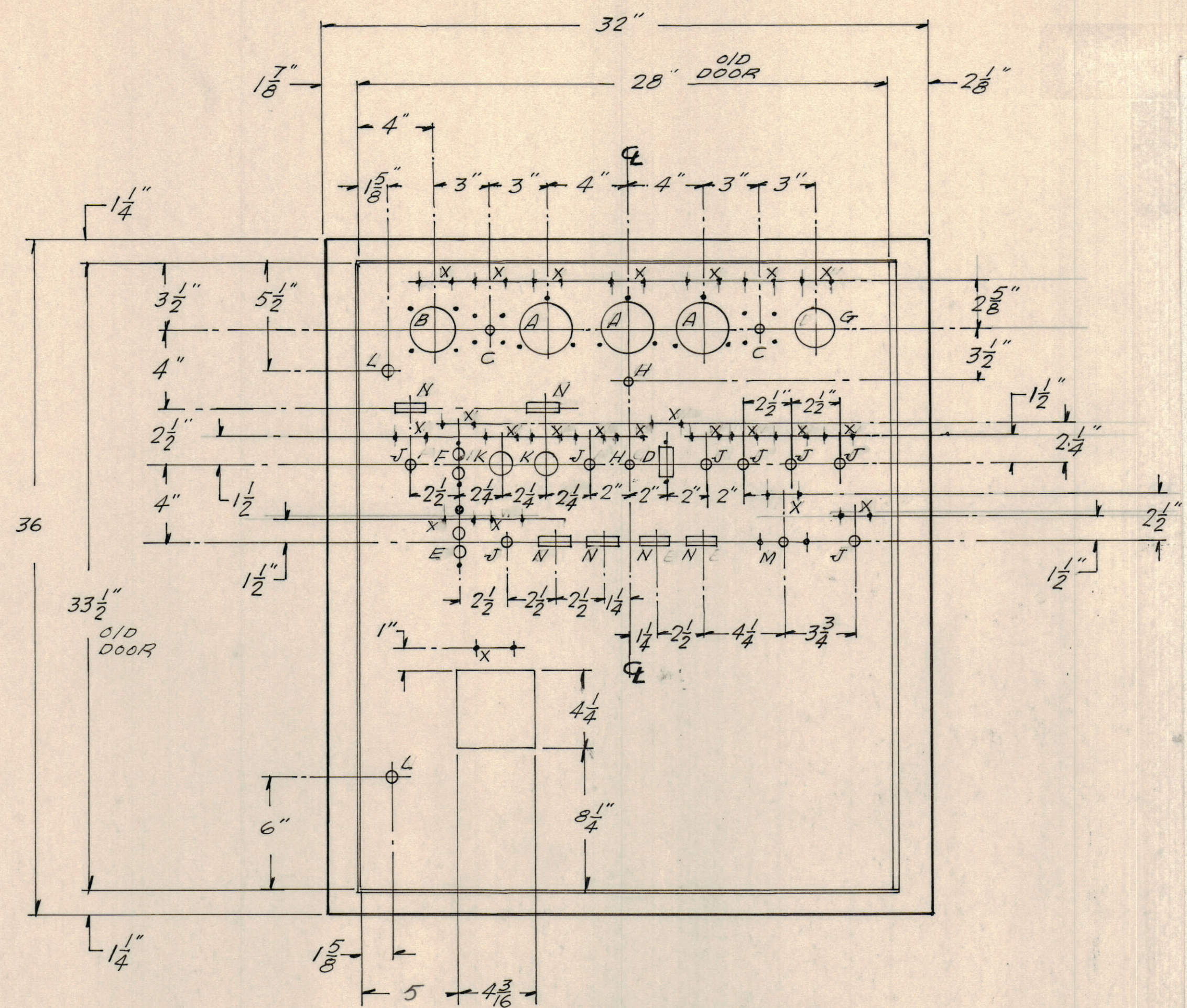
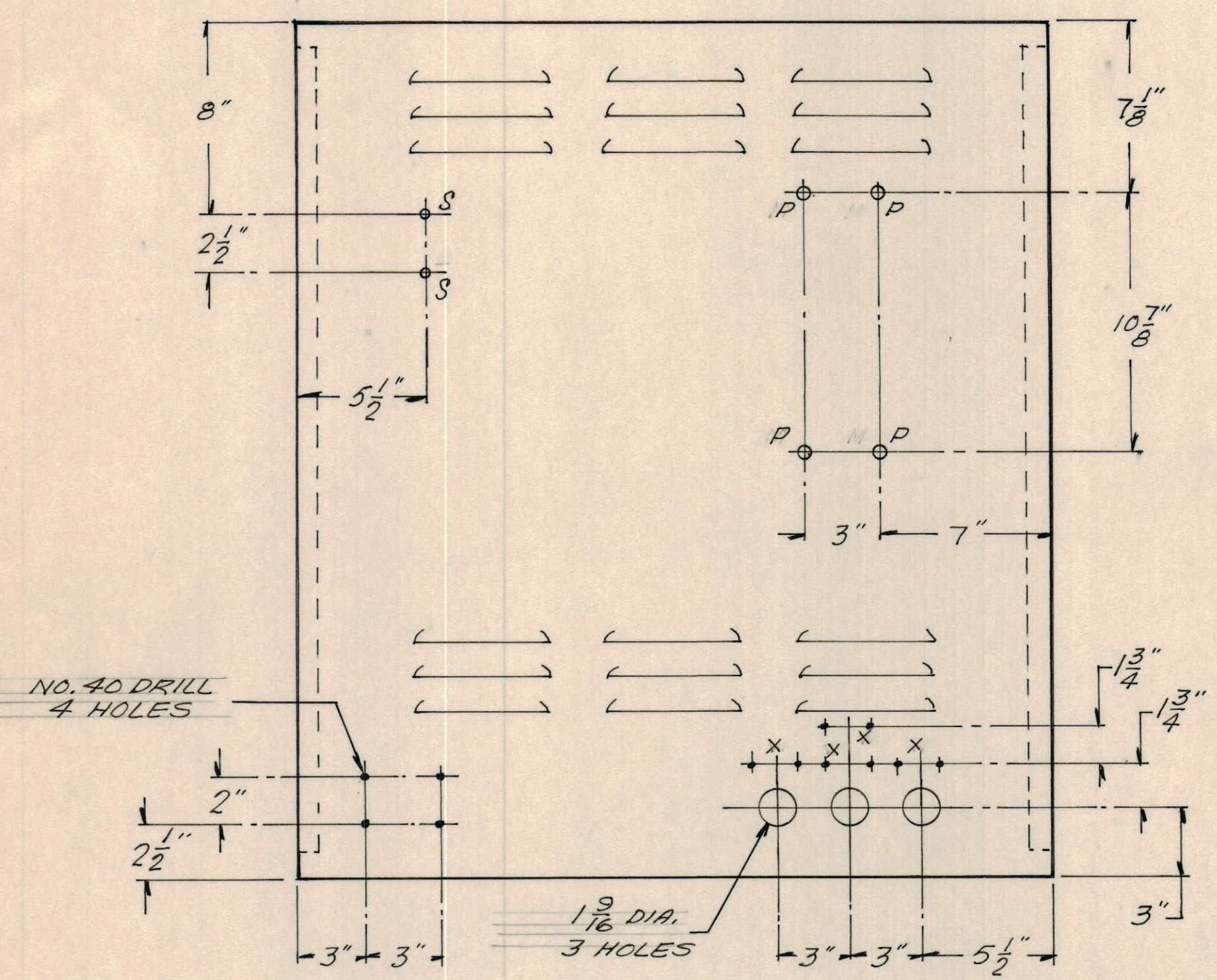
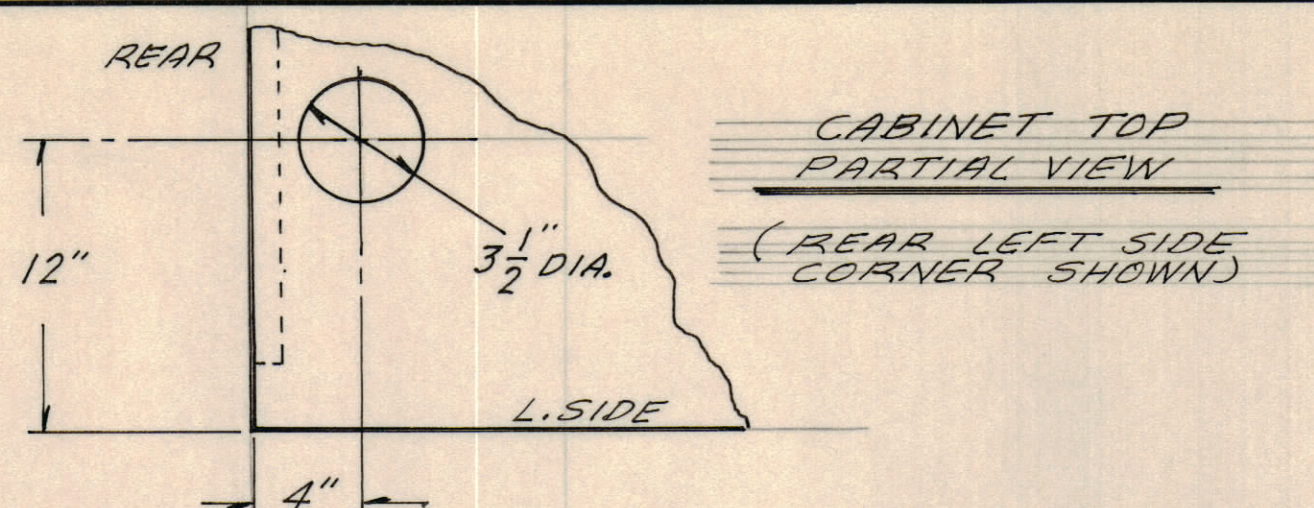
DETAIL A
INTERIOR COMPONENT PANEL

DETAIL B
MANUAL / CARD HOLDER

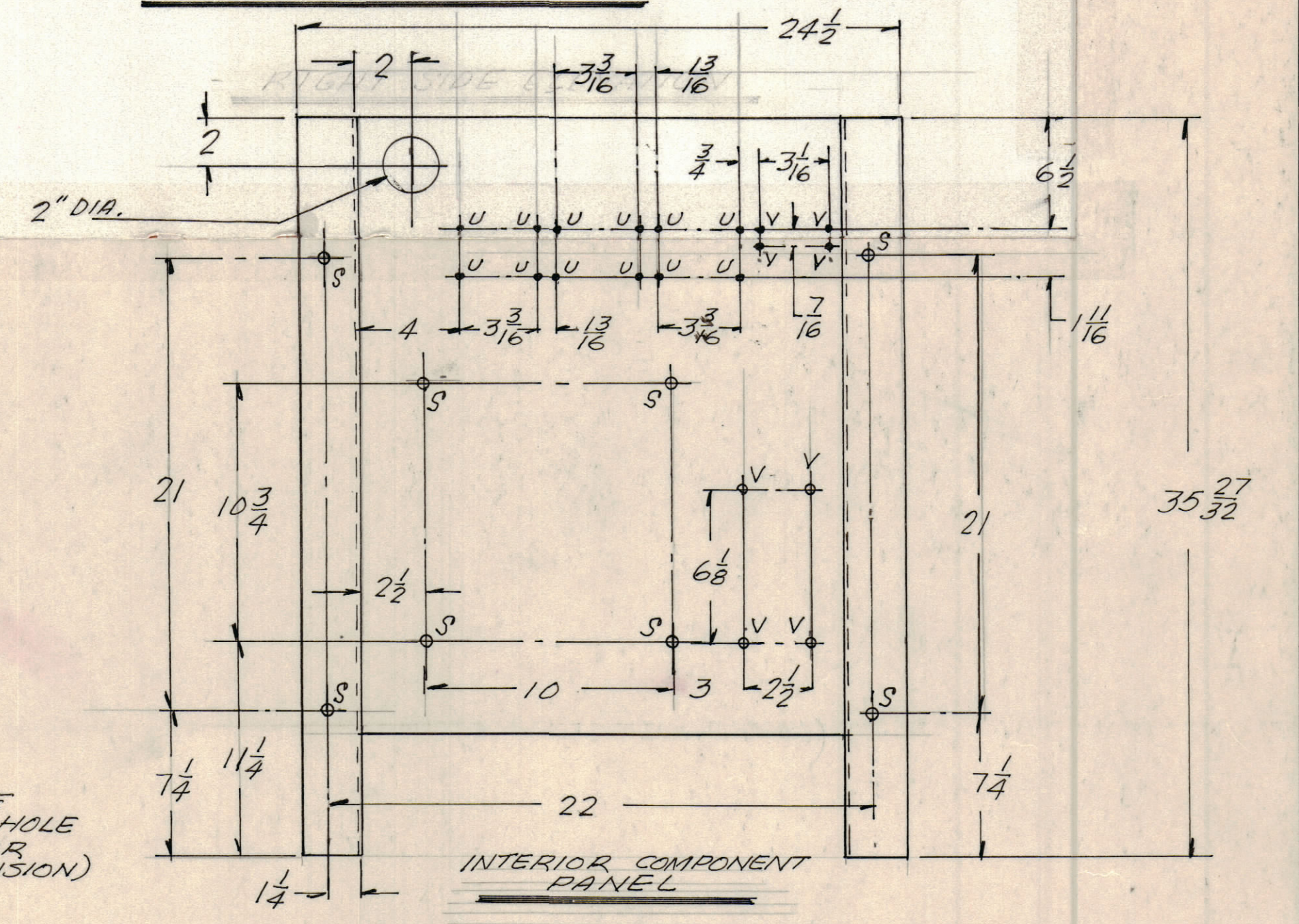
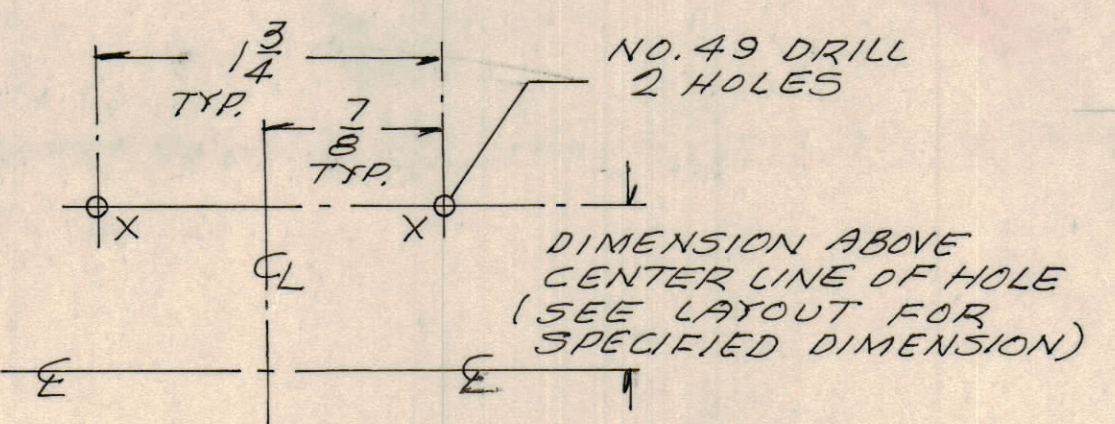
NOTES:
1. REFER TO DWG. FOR CONTROL CABINET FABRICATION ASSEMBLY

QTY REQ	QTY REQ	QTY REQ	ITEM	PART NO.	MANUFACTURER	DESCRIPTION	SYM
PARTS LIST							
INTERPRET DRAWING PER LISTED DOCUMENTS DIMENSIONING MIL - STD - 8 SURFACE ROUGHNESS MIL - STD - 10 ABBREVIATIONS MIL - STD - 12 ELECTRONIC SYMBOLS MIL - STD - 13 WELDING SYMBOLS JAN - STD - 19				UNLESS OTHERWISE SPECIFIED DIMENSIONS ARE IN INCHES AND INCLUDE CHEMICALLY APPLIED OR PLATED FINISHES REMOVE ALL BURRS AND SHARP EDGES TOLERANCES ON FRACTIONS ANGLES DECIMALS SEE SH. 1		DRAWN FRAMPTON DATE 11-5-73 CHECKED [initials] DATE 11-5-73 D. ENG. [initials] DATE 12-7-73 P. ENG. ESP DATE 12-11-73 P. MGR. DATE CHIEF, ENG. DEPT. [signature] DATE 12-11-73	
APPLICATION NOTICE TO PERSONS RECEIVING THIS DRAWING THE TMC SYSTEMS AND POWER CORPORATION claims proprietary right in the material disclosed hereon. This drawing is issued in confidence for engineering information only and may not be reproduced or used to manufacture anything shown hereon without permission from THE TMC SYSTEMS AND POWER CORPORATION to the user. This drawing is loaned for mutual assistance and is subject to recall at any time.				MATERIAL .075 (14GA.) COLD ROLLED STEEL FINISH PER TMC SPEC. P. 4		THE TMC SYSTEMS AND POWER CORPORATION SPRINGFIELD, VIRGINIA CONTROL CABINET FABRICATED PARTS DETAILS SIZE D CODE IDENT NO 24146 DWG. NO. MS6133 REV S SCALE NONE SHEET 3 OF 5	

REVISIONS						
ZONE	LTR	DESCRIPTION	DATE	DRAFT	CHK'D	APPD
	S	SEE SHT. 1 OF 5	11/4/73	ESF	ESF	



HOLE SCHEDULE			HOLE SCHEDULE		
LTR.	DESCRIPTION	REQ.	LTR.	DESCRIPTION	REQ.
A	SEE DETAIL A SHEET 5 OF 5	3	U	7/32 DIA.	29
B	SEE DETAIL B SHEET 5 OF 5	1	V	NO. 35 DRILL	16
C	SEE DETAIL C SHEET 5 OF 5	2	W	7/8 DIA.	2
D	SEE DETAIL D SHEET 5 OF 5	1	X	NO. 49 DRILL (SEE DETAIL BELOW)	52
E	SEE DETAIL E SHEET 5 OF 5	1	Y	1 7/8 DIA.	1
F	SEE DETAIL F SHEET 5 OF 5	1	Z	3/16 DIA.	35
G	2 1/16 DIA.	1			
H	13/32 DIA.	2			
J	1/2 DIA.	8			
K	13/16 DIA.	2			
L	5/8 DIA.	2			
M	SEE DETAIL M SHEET 5 OF 5	1			
N	SEE DETAIL N SHEET 5 OF 5	6			
P	7/16 DIA.	12			
R	1/4 DIA.	4			
S	5/16 DIA.	22			
T	9/32 DIA.	10			



QTY REQ	QTY REQ	QTY REQ	ITEM	PART NO.	MANUFACTURER	DESCRIPTION	SYM
				PARTS LIST			
				THE TMC SYSTEMS AND POWER CORPORATION SPRINGFIELD, VIRGINIA			
				CONTROL CABINET			
				DRILLING LAYOUT & DETAILS			
				SIZE	CODE IDENT NO	DWG. NO.	REV
				D	24146	MS6133	S
				SCALE	3/16		SHEET 4 OF 5

INTERPRET DRAWING PER LISTED DOCUMENTS

UNLESS OTHERWISE SPECIFIED DIMENSIONS ARE IN INCHES AND INCLUDE CHEMICALLY APPLIED OR PLATED FINISHES REMOVE ALL BURRS AND SHARP EDGES

TOLERANCES ON

FRACTIONS	ANGLES	DECIMALS
± 1/64	1/2°	

NOTICE TO PERSONS RECEIVING THIS DRAWING

THE TMC SYSTEMS AND POWER CORPORATION claims proprietary right in the material disclosed herein. This drawing is issued in confidence for engineering information only and may not be reproduced or used to manufacture anything shown herein without permission from THE TMC SYSTEMS AND POWER CORPORATION to the user. This drawing is loaned for mutual assistance and is subject to recall at any time.

DRAWN FRAMPTON DATE 11-10-73

CHECKED [Signature] DATE 11-30-73

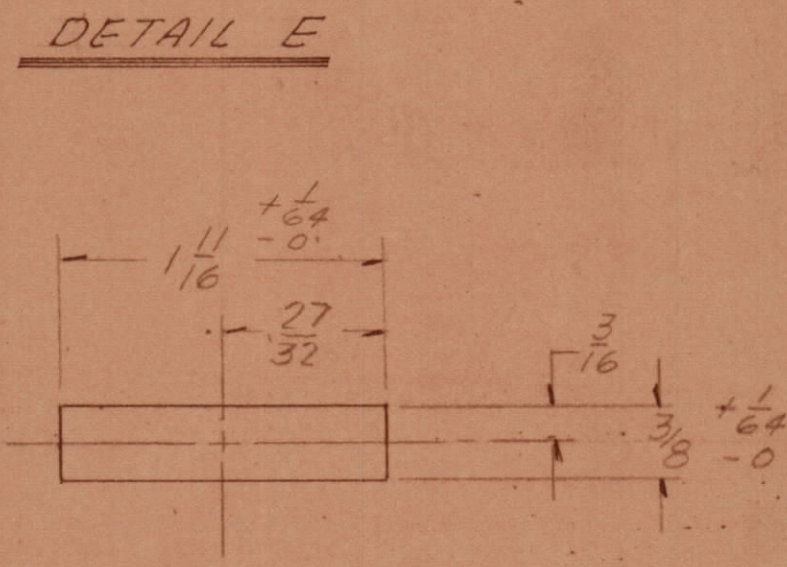
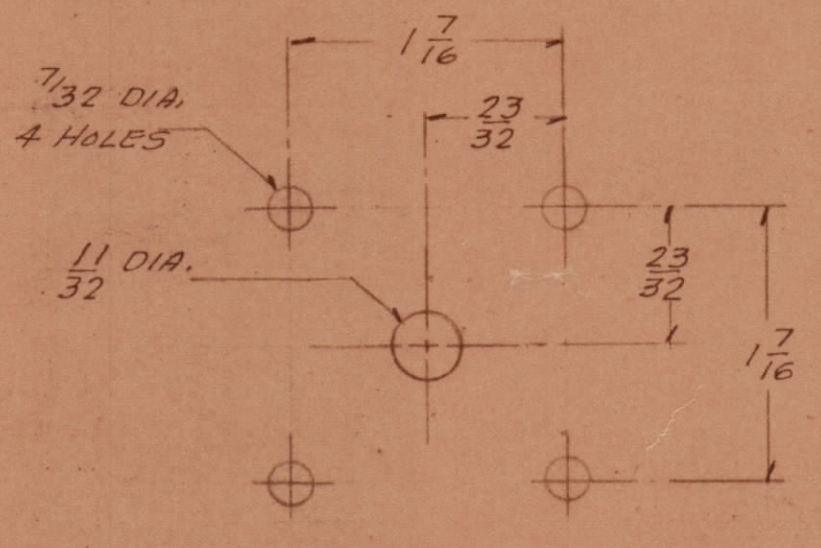
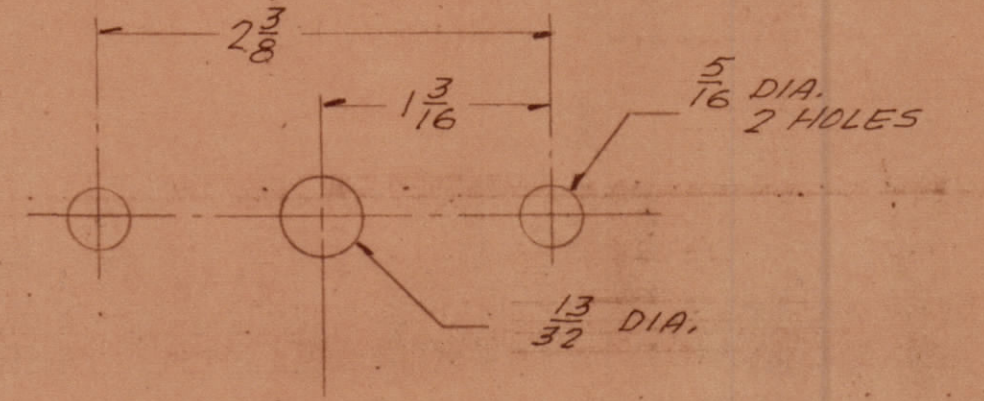
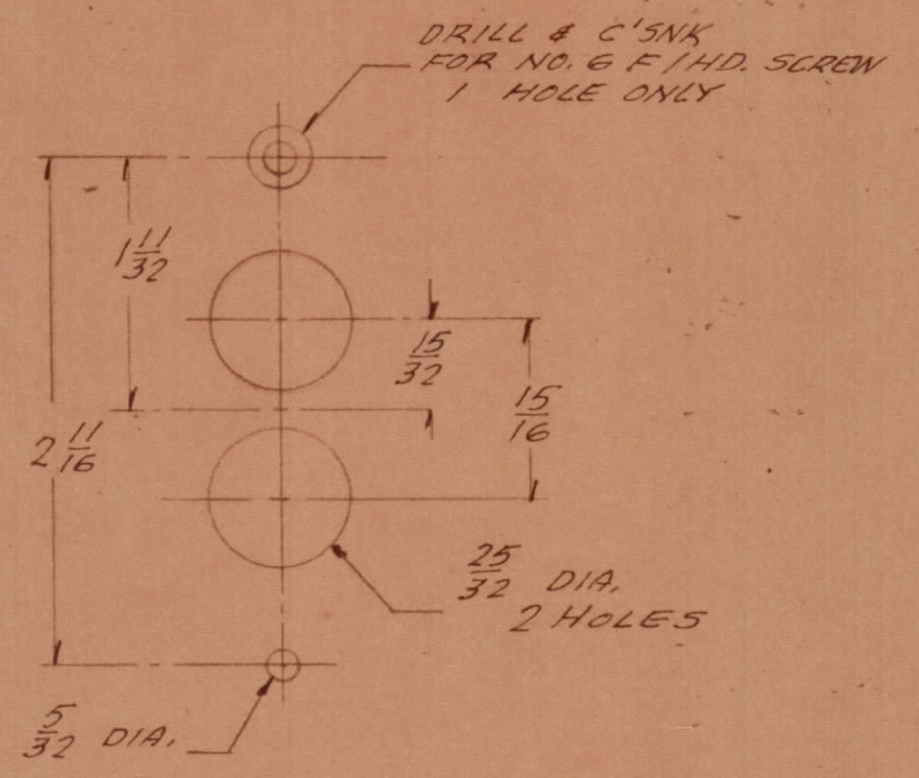
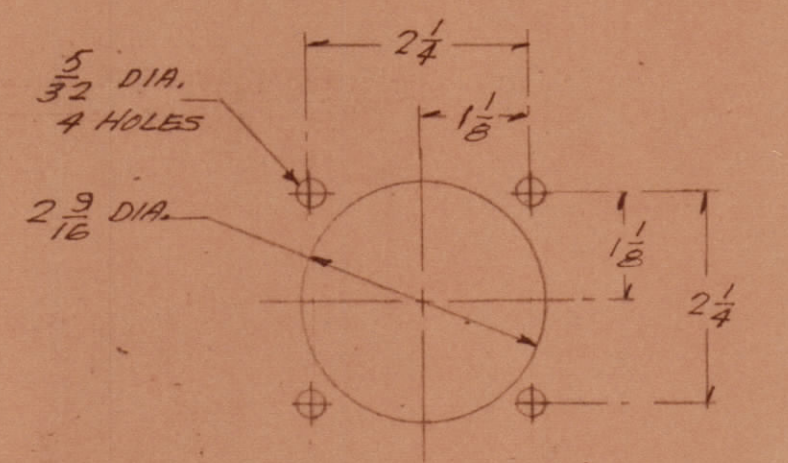
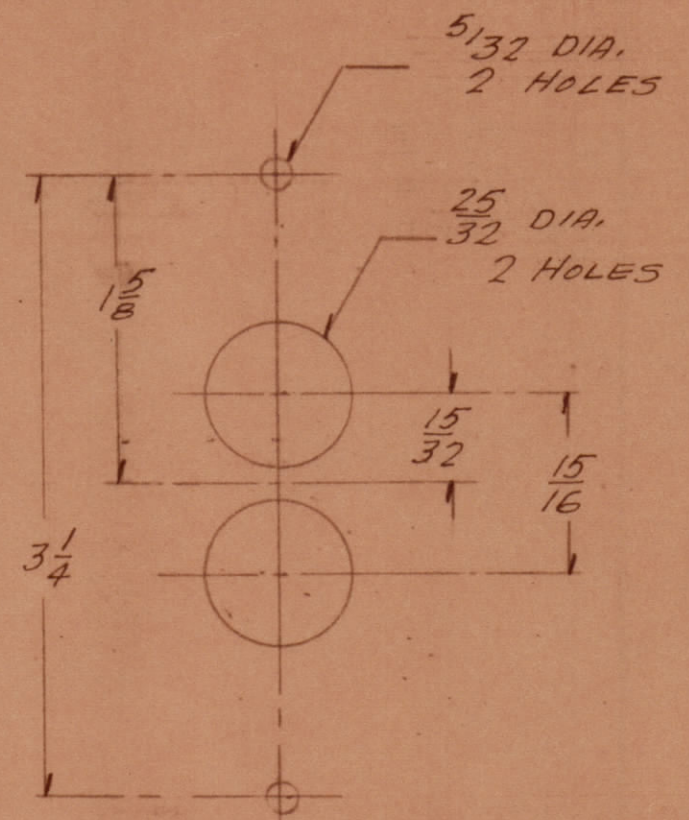
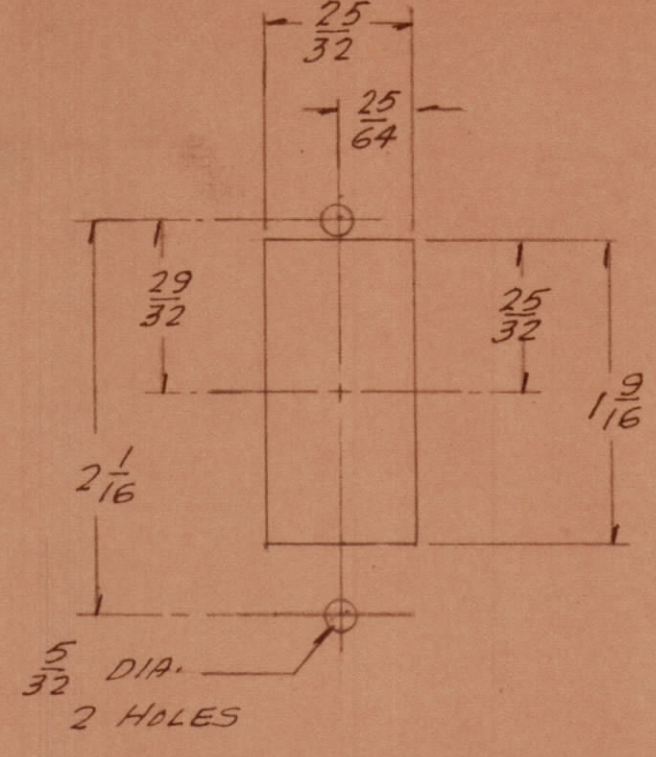
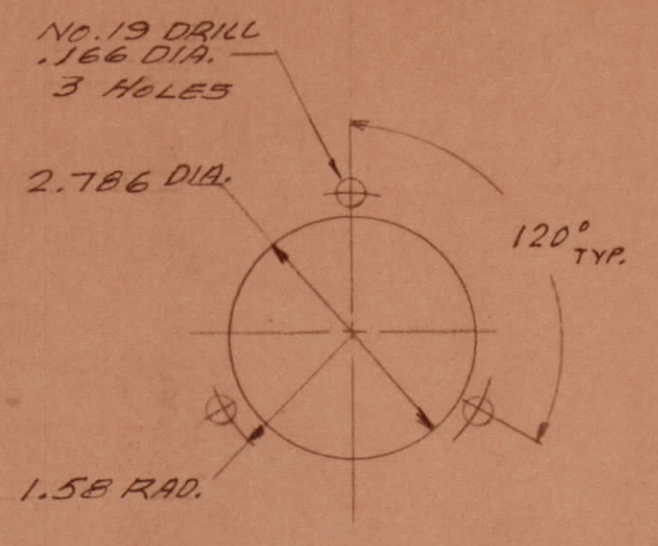
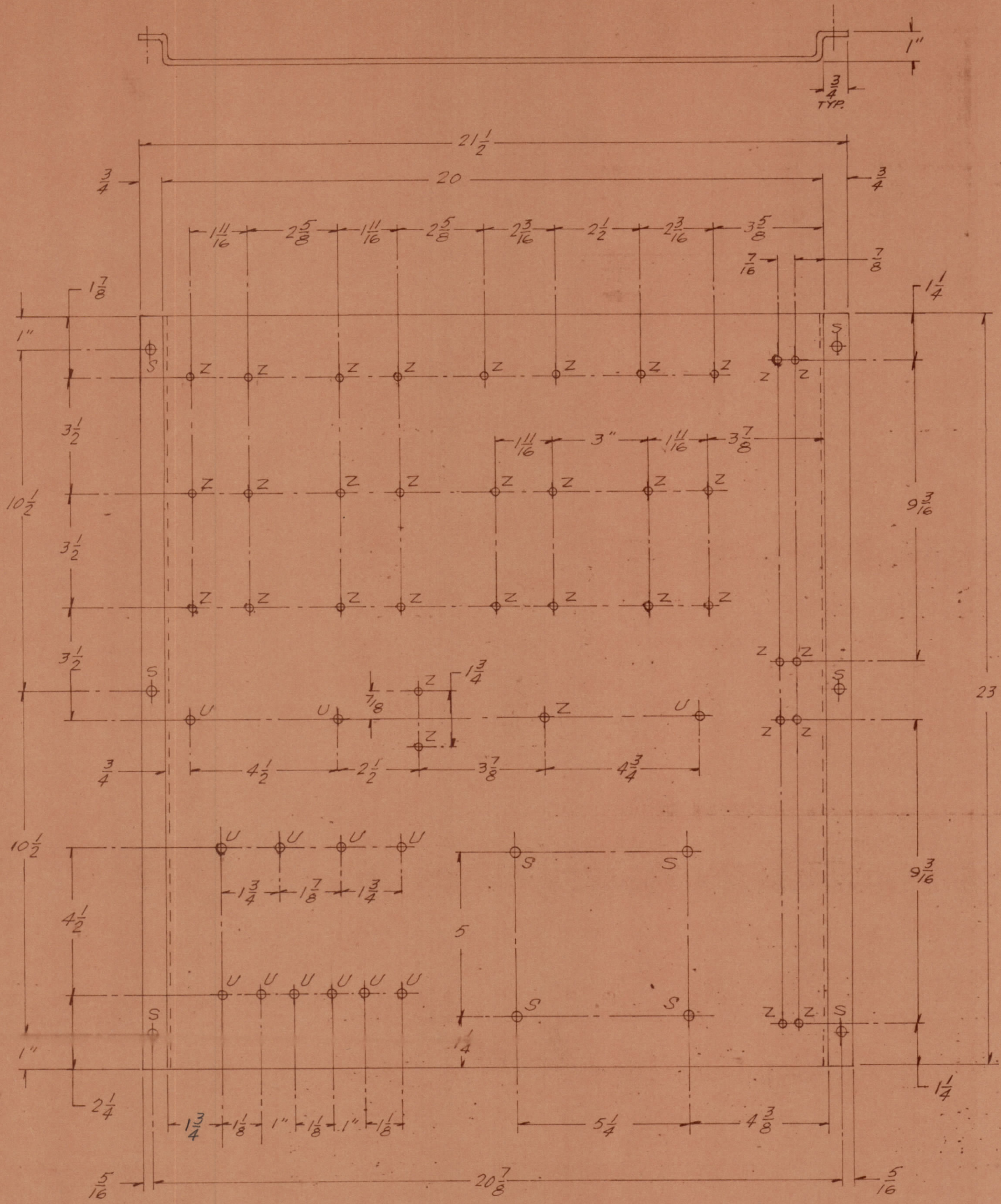
D. ENG. [Signature] DATE 12-7-73

P. ENG. ESF DATE 12-10-73

P. MGR. DATE

CHIEF, ENG. DEPT. DATE 12-11-73

REVISIONS						
ZONE	LTR	DESCRIPTION	DATE	DRAFT	CHK'D	APP'D
S		SEE SH. 1 OF 5	11/17/73	ESF	24	



INTERIOR COMPONENT PANEL
.1196 (116A) C.R. STL.
1 REQD.

QTY REQ	QTY REQ	QTY REQ	ITEM	PART NO.	MANUFACTURER	DESCRIPTION	SYM
PARTS LIST							
						THE TMC SYSTEMS AND POWER CORPORATION SPRINGFIELD, VIRGINIA	
						CONTROL CABINET DRILLING LAYOUT & DETAILS	
						SIZE CODE IDENT NO DWG. NO	REV
						D 24146 MS6133	S
						SCALE 3/16	SHEET 5 OF 5

INTERPRET DRAWING PER LISTED DOCUMENTS

DIMENSIONING
MIL - STD - 8
SURFACE ROUGHNESS
MIL - STD - 10
ABBREVIATIONS
MIL - STD - 12
ELECTRONIC SYMBOLS
MIL - STD - 15
WELDING SYMBOLS
JAN - STD - 19

UNLESS OTHERWISE SPECIFIED DIMENSIONS ARE IN INCHES AND INCLUDE CHEMICALLY APPLIED OR PLATED FINISHES REMOVE ALL BURRS AND SHARP EDGES

TOLERANCES ON
FRACTIONS ANGLES DECIMALS
±1/64 1/2°

NOTICE TO PERSONS RECEIVING THIS DRAWING
THE TMC SYSTEMS AND POWER CORPORATION claims proprietary right in the material disclosed hereon. This drawing is issued in confidence for engineering information only and may not be reproduced or used to manufacture anything shown hereon without permission from THE TMC SYSTEMS AND POWER CORPORATION to the user. This drawing is loaned for mutual assistance and is subject to recall at any time.

DRAWN EDMPTON DATE 11-26-73
CHECKED ML DATE 11-28-73
D. ENG. MY DATE 12-7-73
P. ENG. ESF DATE 12-10-73
P. MGR. DATE
CHIEF, ENG. DEPT. DATE 11-17-73