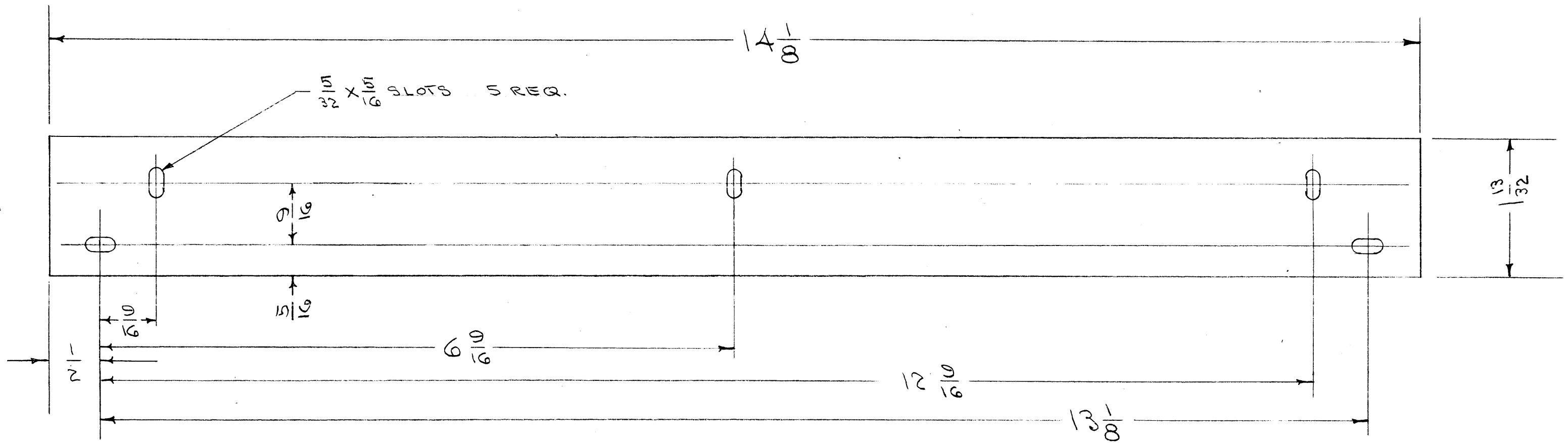


IF IT IS FOUND DESIRABLE TO CHANGE ANY TOLERANCE OR OTHER DETAIL SPECIFIED ON THIS DRAWING NOTIFY THE PURCHASER PROMPTLY.

MAXIMUM ALLOWABLE TOLERANCES HAVE BEEN DETERMINED AND DEVIATIONS WILL BE CAUSE FOR REJECTION. REMOVE ALL BURRS AND SHARP EDGES

MS-600 A



NOTE
USED ONLY ON JOB # 277-A1

NOTICE TO PERSONS RECEIVING THIS DRAWING

THE TECHNICAL MATERIEL CORPORATION claims proprietary right in the material disclosed hereon. This drawing is issued in confidence for engineering information only and may not be reproduced or used to manufacture anything shown hereon without permission from THE TECHNICAL MATERIEL CORPORATION to the user. This drawing is loaned for mutual assistance and is subject to recall at any time.

Property of:
THE TECHNICAL MATERIEL CORPORATION
MAMARONECK, NEW YORK

REQ.	ITEM	PART NO.	DESCRIPTION	SYMBOL
		.032	THE TECHNICAL MATERIEL CORP. MAMARONECK, NEW YORK	
		ALUMINUM	SHIM PLATE, RF CHASSIS	
		52S H32		
			CDD 1-21-55	
			DRAWN	MECH. DES. APP.
			CHECKED	FINAL APPROVAL
		S-404 YELLOW IRIDITE		MS-600 A

ISSUE	ITEM	CHANGED FROM	DATE	CN. NO.	DRAFTS	CHECKER	ENG. APP.
A	1	S-404 WAS S-101	12/11/54	1001	AG		EMN

TOLERANCES	SCALE:
ALL OTHERS DEC. DIM. $\pm \frac{1}{64}$ FRAC. DIM. $\pm \frac{1}{64}$ ANGULAR DIM. \pm	DRILL, PUNCH, COMMERCIAL STOCK SIZES AND MANUFACTURERS TOLERANCES ARE NOT INCLUDED.

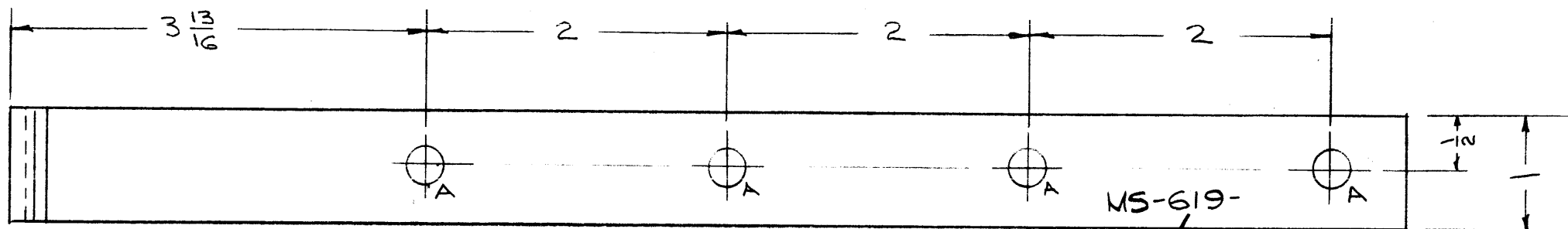
REQ. PER UNIT	MODEL	PROJECT NO.	ASS'Y. NO.	DATE
2	VOX-1	291		1-21-55

IF IT IS FOUND DESIRABLE TO CHANGE ANY TOLERANCE OR OTHER DETAIL SPECIFIED ON THIS DRAWING NOTIFY THE PURCHASER PROMPTLY.

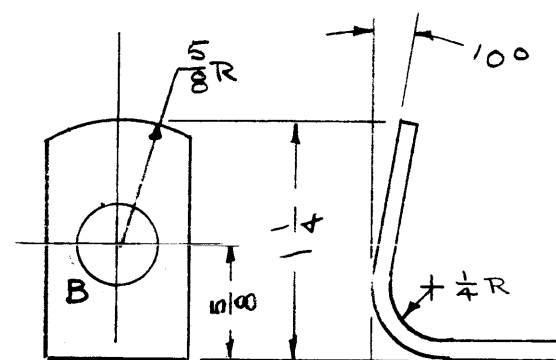
MAXIMUM ALLOWABLE TOLERANCES HAVE BEEN DETERMINED AND DEVIATIONS WILL BE CAUSE FOR REJECTION. REMOVE ALL BURRS AND SHARP EDGES

MS-619 G

TMC NO.	MATERIAL	FINISH
MS-619	SOFT STEEL HOT ROLLED	CADMIUM PLATE S105, IRIDITE S106
MS-619-1	STAINLESS (TYPE 304) STEEL	PASSIVATE S104



METAL STAMP
TMC PART NO., WITH LATEST REV. LETTER
1/8 GOTHIC AS SHOWN.



- HOLES
- A - 9/32 DIA - 4 REQ.
 - B - 13/32 DIA - 1 REQ.

THIS DOCUMENT HAS BEEN PURCHASED BY THE GOVERNMENT AND MAY BE REPRODUCED AND USED IN CONNECTION WITH ANY GOVERNMENT PROCUREMENT OR MAINTENANCE OPERATION

ISSUE	ITEM	CHANGED FROM	DATE	CN. NO.	DRAFTS	CHECKER	ENG. APP.
G	3	DNMS-619-1 FINISH WAS NONE ON MS-619 ADD. IRIDITE S106 "FINISH" COLUMN WAS "PLATING" COL.	7.17.64	11883	LSB	@	MMK
F	3	"B" HOLE ADDED TO LEGEND	7-17-63	9591	W.	W.	W.
	2	PROPERTY STAMP DELETED					
	1	TOLERANCES ADDED					

TOLERANCES	SCALE:
DEC. DIM. ± .005	DRILL, PUNCH, COMMERCIAL STOCK SIZES AND MANUFACTURERS TOLERANCES ARE NOT INCLUDED.
FRAC. DIM. ± 1/64	
± .0030'	

REQ. PER UNIT	MODEL	PROJECT NO.	ASS'Y. NO.	DATE
4	TRC-3500			6-16-58
4	BAC-1-5-20			
4	BAC-1			
4	VRA-1, VRA-2			2-11-55

REQ.	ITEM	PART NO.	DESCRIPTION	SYMBOL
		1/8 x 1	THE TECHNICAL MATERIEL COMP.	
		SEE CHART	MAMARONECK. NEW YORK	
		SEE CHART	BRACKET, MOUNTING	
		SEE CHART		
		TYPE & TEMPER	DATE 2-11-55	APPB
		HEAT TREAT. SPEC.	DRAWN	ELEC. DES. APP. MECH. DES. APP.
		FINISH & SPEC. NO.	CHECKED	FINAL APPROVAL

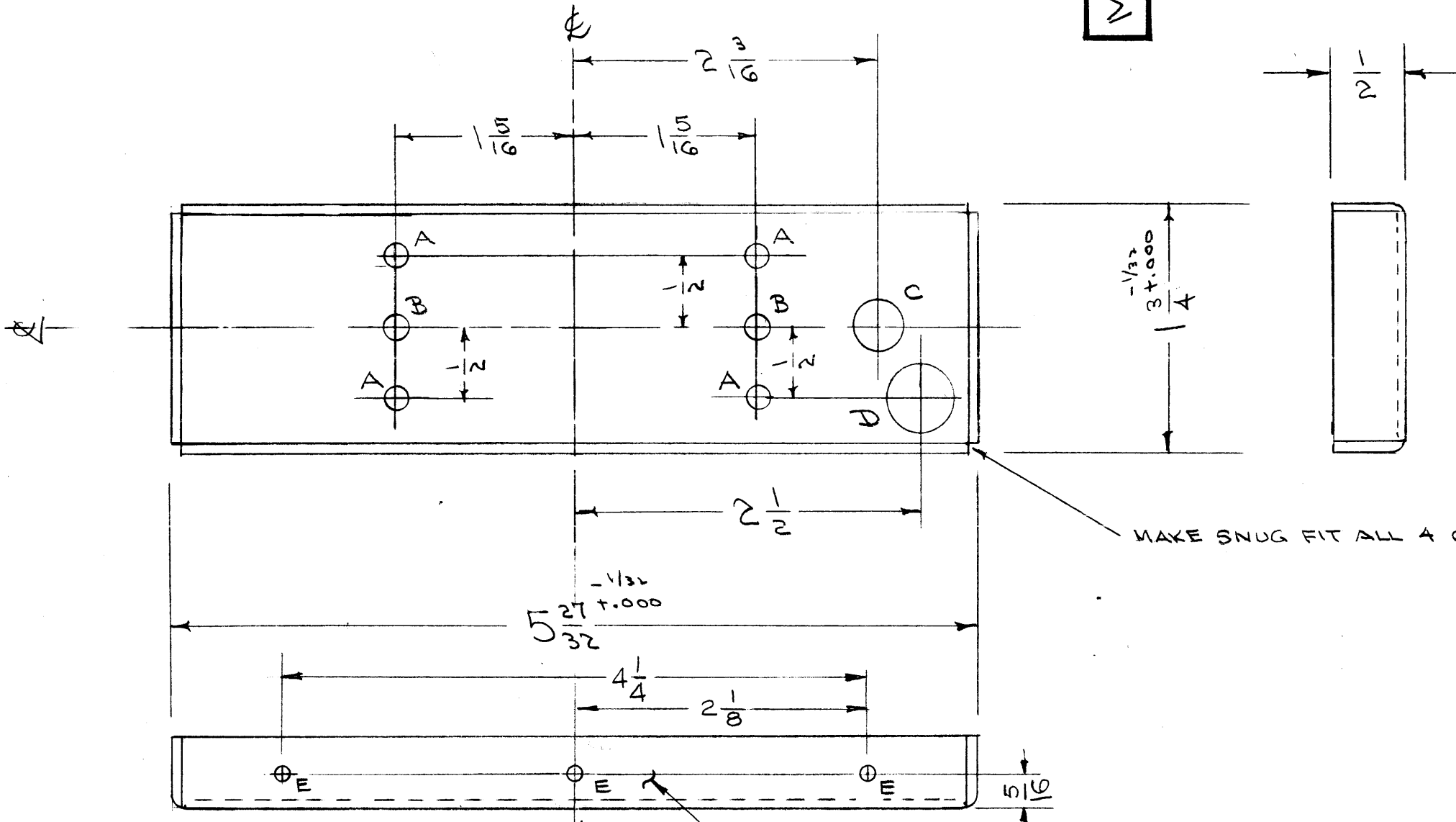
MS-619 AG

IF IT IS FOUND DESIRABLE TO CHANGE ANY TOLERANCE OR OTHER DETAIL SPECIFIED ON THIS DRAWING NOTIFY THE PURCHASER PROMPTLY.

MAXIMUM ALLOWABLE TOLERANCES HAVE BEEN DETERMINED AND DEVIATIONS WILL BE CAUSE FOR REJECTION. REMOVE ALL BURRS AND SHARP EDGES

MS-624 J

- A - 13/64 (.203) D. 4 REQ
- B - 3/16 (.187) D 2 "
- C - 7/16 (.437) D. 1 "
- D - 1/2 (.500) D 1 "
- E - 1/8 DIA 6 "



NOTICE TO PERSONS RECEIVING THIS DRAWING
 THE TECHNICAL MATERIEL CORPORATION claims proprietary right in the material disclosed hereon. This drawing is issued in confidence for engineering information only and may not be reproduced or used to manufacture anything shown hereon without permission from THE TECHNICAL MATERIEL CORPORATION. This drawing is loaned for mutual assistance and is subject to recall at any time.
 Property of:
 THE TECHNICAL MATERIEL CORPORATION
 MAMARONECK, NEW YORK

BOTH SIDES IDENTICAL

REF. DWG MS-593

ISSUE	ITEM	CHANGED FROM	DATE	CN. NO.	DRAFTS	CHECKER	ENG. APP.
J	1	DIM 5/16 WAS 1/4 E HOLES WERE .093 DIA.	4-13-66	16094	G.D.L.	[Signature]	[Signature]
H	1	#6 "E" HOLES ADDED	9-23-63	10,041	G.D.L.	[Signature]	[Signature]
G	1	ONE "C" HOLE DELETED	2-19-60	~	M.F.	[Signature]	[Signature]
F	1	S-404 WAS S-101	12/11/59	1001	AB	[Signature]	EMN
E	1	7/16 (.437) D WAS 3/8 (.375) D	10-14-58	477	J.C.B.	[Signature]	[Signature]
D	1	C HOLE RELOCATED	7/6/56	4	G	[Signature]	[Signature]
C	1	A HOLES WERE #18	7/14/56	3	CSS	[Signature]	[Signature]
B	2	A HOLES WERE 2 REQ	7/27/56	2	CSS	[Signature]	[Signature]
A	1	A " WERE 1/64 D.	7/18/55	1	CSS	[Signature]	[Signature]

TOLERANCES		SCALE:	
ALL OTHERS	DEC. DIM. ± FRAC. DIM. ± 1/64 ANGULAR DIM. ±	DRILL, PUNCH, COMMERCIAL STOCK SIZES AND MANUFACTURERS TOLERANCES ARE NOT INCLUDED.	

REQ. PER UNIT	MODEL	PROJECT NO.	ASSY. NO.	DATE
1	GPR-90	297		3-29-55

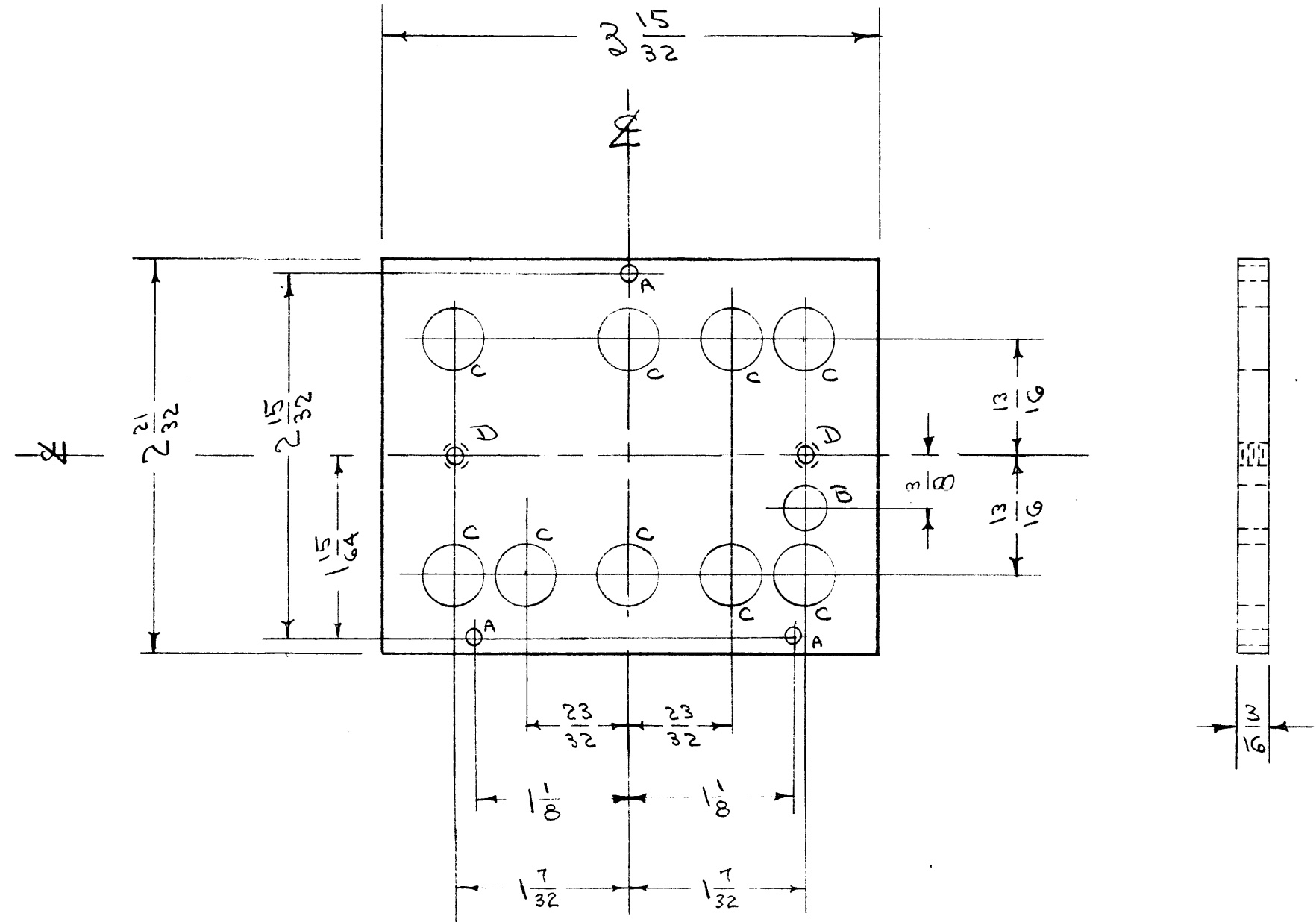
REQ.	ITEM	PART NO.	DESCRIPTION	SYMBOL
		.064	THE TECHNICAL MATERIEL CORP. MAMARONECK, NEW YORK	
		ALUMINUM	BTM. COVER	
		52S H32	2 ND CONVERTER GPR	
			ADD. 3-29-55	
			HEAT TREAT. SPEC.	G.T.O
			FINISH & SPEC. NO.	MS-624 J

IF IT IS FOUND DESIRABLE TO CHANGE ANY TOLERANCE OR OTHER DETAIL SPECIFIED ON THIS DRAWING NOTIFY THE PURCHASER PROMPTLY.

MAXIMUM ALLOWABLE TOLERANCES HAVE BEEN DETERMINED AND DEVIATIONS WILL BE CAUSE FOR REJECTION. REMOVE ALL BURRS AND SHARP EDGES

MS-630 A

A - 9/64 (.140) D. 3 HOLES REQ.
 B - 5/16 (.312) D. 1 " "
 C - 7/16 (.437) D. 9 " "
 D - DRILL & TAP G-32 2 " "



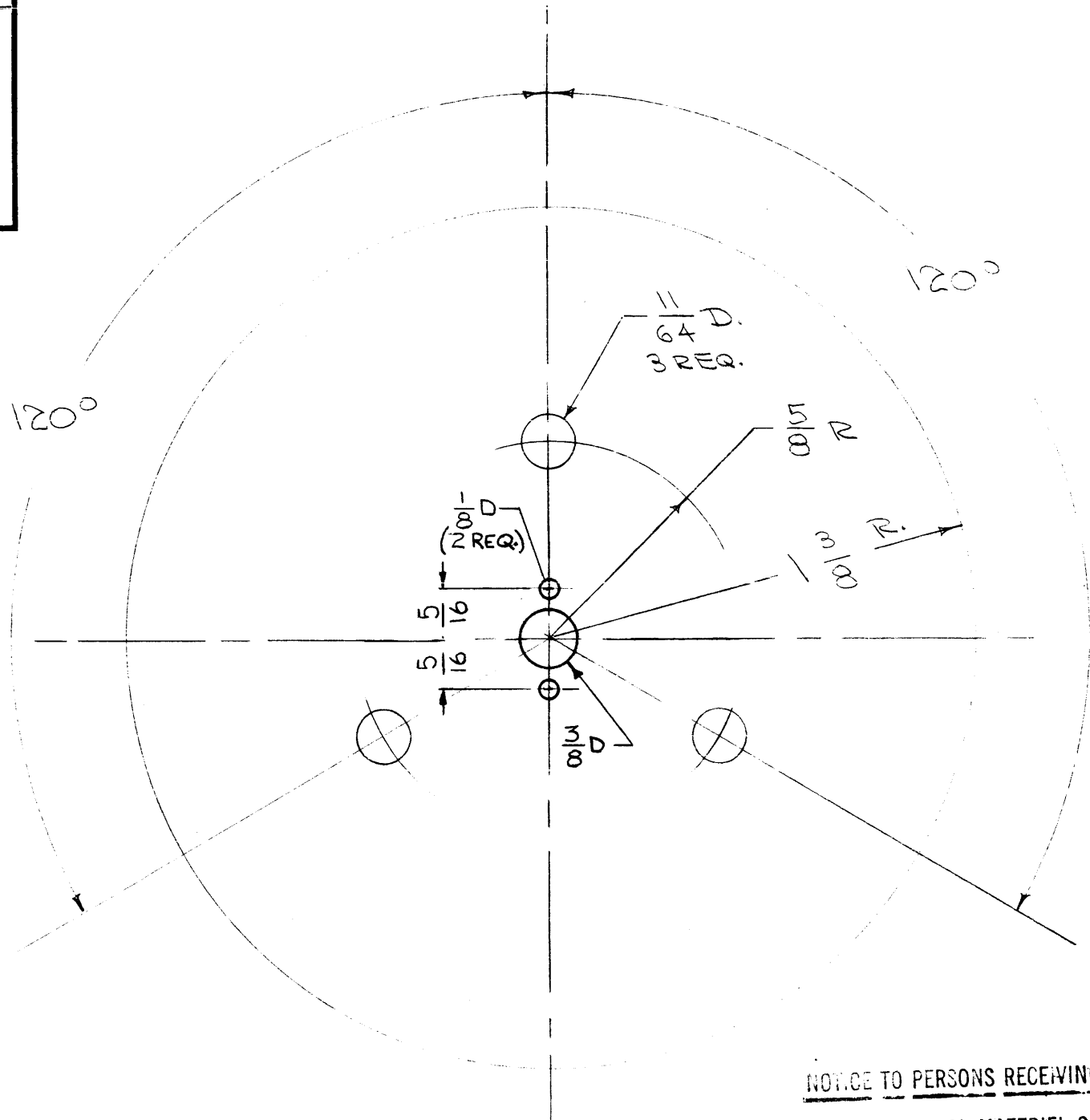
NOTICE TO PERSONS RECEIVING THIS DRAWING
 THE TECHNICAL MATERIEL CORPORATION claims proprietary right in the material disclosed hereon. This drawing is issued in confidence for engineering information only and may not be reproduced or used to manufacture anything shown hereon without permission from THE TECHNICAL MATERIEL CORPORATION to the user. This drawing is loaned for mutual assistance and is subject to recall at any time.
 Property of:
 THE TECHNICAL MATERIEL CORPORATION
 MAMARONECK, NEW YORK

A	1	S-404 WAS S101	12/11/54	1001	AB	EMN	
ISSUE	ITEM	CHANGED FROM	DATE	CN. NO.	DRAFTS	CHECKER	ENG. APP.
TOLERANCES		SCALE:					
ALL OTHERS	DEC. DIM. ±	DRILL, PUNCH, COMMERCIAL STOCK					
	FRAC. DIM. ± 1/64	SIZES AND MANUFACTURERS					
	ANGULAR DIM. ±	TOLERANCES ARE NOT INCLUDED.					

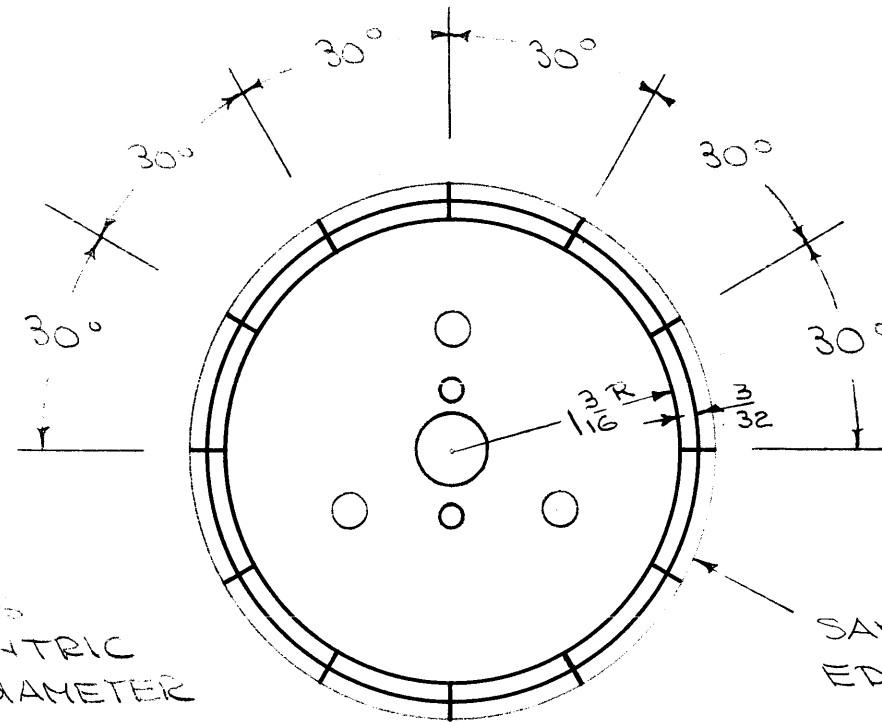
1	FSS		3-22-55	
REQ. PER UNIT	MODEL	PROJECT NO.	ASS'Y. NO.	DATE
USED ON				

REQ.	ITEM	PART NO.	DESCRIPTION	SYMBOL
		3/16 THK.	THE TECHNICAL MATERIEL CORP.	
		STOCK SIZE	MAMARONECK, NEW YORK	
	ALUMINUM	#	1 M.C. OVEN PLATE	
	MATERIAL	WEIGHT PER PC.	F.S.S.	
			24 S T 3	
			TYPE & TEMPER	
			#	
			HEAT TREAT. SPEC.	
			S-404 YELLOW IRIDITE	
			FINISH & SPEC. NO.	
			CDD. 3-22-55	
			DRAWN	ELEC. DES. APP.
			MECH. DES. APP.	
			CHECKED	FINAL APPROVAL
				MS-630 A

MS-631 B



SCALE - 2X



SCALE - FULL

ETCHED CIRCLES
MUST BE CONCENTRIC
WITH OUTSIDE DIAMETER
WITHIN $\pm .010$

SAND ALL LEADING
EDGES SMOOTH

NOTE - FINISH
BLACK ETCHED LINES ON SATIN ALUMINUM
BACKGROUND.

NOTICE TO PERSONS RECEIVING THIS DRAWING

THE TECHNICAL MATERIEL CORPORATION claims proprietary right in the material disclosed hereon. This drawing is issued in confidence for engineering information only and may not be reproduced or used to manufacture anything shown hereon without permission from THE TECHNICAL MATERIEL CORPORATION to the user. This drawing is loaned for mutual assistance and is subject to recall at any time.

Property of:

THE TECHNICAL MATERIEL CORPORATION
MAMARONECK, NEW YORK

ISSUE	ITEM	CHANGED FROM	DATE	CH. NO.	DRAFTS	CHECKER	ENG. APP.
B	1	CENTER HOLE WAS 15/32	10-14-66	17038	RME		
	2	ADD 2 1/8 HOLES & DIMS					
A	1	COMPLETE REVISION	9/19/66	1			

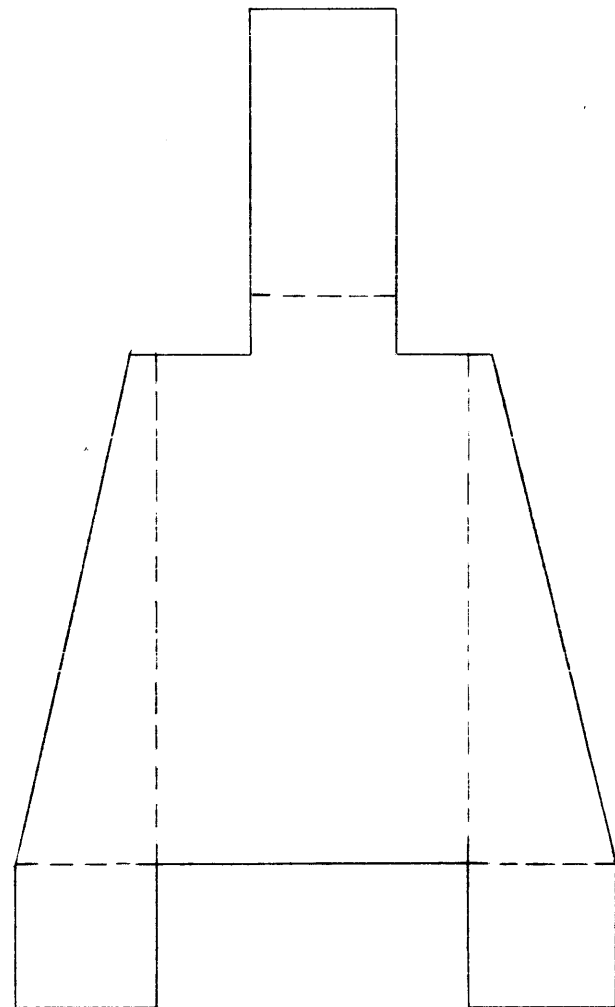
TOLERANCES		SCALE:
DEC. DIM. \pm		MAXIMUM ALLOWABLE TOLERANCES HAVE BEEN DETERMINED AND ANY DEVIATIONS WILL BE CAUSE FOR REJECTION.
FRAC. DIM. $\pm 1/64$		REMOVE ALL BURRS AND SHARP EDGES
ANGULAR DIM. $\pm 10'$		

REQ. PER UNIT	MODEL	PROJECT NO.	ASS'Y. NO.	DATE
1	G5B-1			10-31-56
2	GPR-90	297		5-19-56

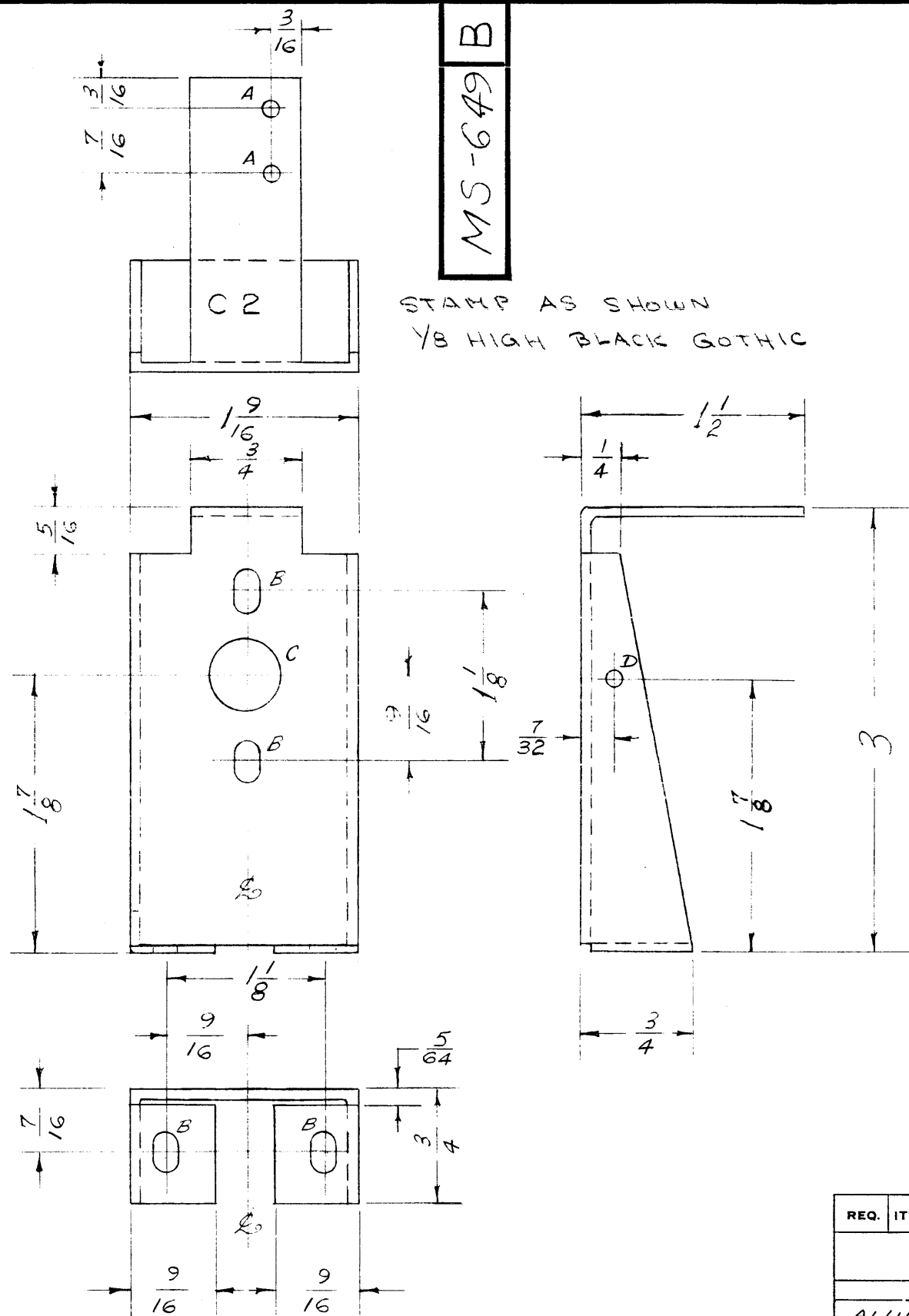
REQ. ITEM	PART NO.	DESCRIPTION	SYMBOL
	.064	THE TECHNICAL MATERIEL CORP. MAMARONECK, NEW YORK	
	STOCK SIZE		
	ALUMINUM	DIAL PLATE, KNOB	
	MATERIAL	GPR	
	5052-H32	ODD 9/19/66	
	TYPE & TEMPER	HEAT TREAT. SPEC.	
	SEE NOTE		
	FINISH & SPEC. NO.	ELEC. DES. APP.	MECH. DES. APP.

IF IT IS FOUND DESIRABLE TO CHANGE ANY TOLERANCE OR OTHER DETAIL SPECIFIED ON THIS DRAWING NOTIFY THE PURCHASER PROMPTLY.

MAXIMUM ALLOWABLE TOLERANCES HAVE BEEN DETERMINED AND DEVIATIONS WILL BE CAUSE FOR REJECTION. REMOVE ALL BURRS AND SHARP EDGES



BLANK LAYOUT



NOTICE TO PERSONS RECEIVING THIS DRAWING
THE TECHNICAL MATERIEL CORPORATION claims proprietary right in the material disclosed hereon. This drawing is issued in confidence for engineering information only and may not be reproduced or used to manufacture anything shown hereon without permission from THE TECHNICAL MATERIEL CORPORATION to the user. This drawing is loaned for mutual assistance and is subject to recall at any time.

Property of:
THE TECHNICAL MATERIEL CORPORATION
MAMARONECK, NEW YORK

- A - 9/64 (.190) D. 2 HOLES REQ.
- B - 5/32 x 5/16 4 SLOTS REQ.
- C - 1/2 (.500) D. 1 HOLE REQ.
- D - # 44 (.086) DRILL 1 HOLE REQ.

B	1	S-404 WAS S-101	12/11/54	1001	AB		EMN
A	2	1/4 DIM. WAS 1/8	8-20-55	1	MS	JAL	WJC
	1	D HOLE ADDED					

ISSUE	ITEM	CHANGED FROM	DATE	CN. NO.	DRAFTS	CHECKER	ENG. APP.
TOLERANCES		SCALE:					
ALL OTHERS	DEC. DIM. ±	DRILL, PUNCH, COMMERCIAL STOCK SIZES AND MANUFACTURERS TOLERANCES ARE NOT INCLUDED.					
	FRAC. DIM. ± 1/64						
	ANGULAR DIM. ±						

1	← 3/8			7-22-55
REQ. PER UNIT	MODEL	PROJECT NO.	ASS'Y. NO.	DATE
USED ON				

REQ.	ITEM	PART NO.	DESCRIPTION	SYMBOL
		.064	THE TECHNICAL MATERIEL CORP.	
		STOCK SIZE	MAMARONECK, NEW YORK	
	ALUMINUM	#	CONDENSER MOUNTING BRACKET	
	MATERIAL	WEIGHT PER PC.	MODEL FSS	
	525-H32		P.A. 6-8-55	
	TYPE & TEMPER		BB	USX
			DRAWN	ELEC. DES. APP.
			JAL	WJC
			CHECKED	FINAL APPROVAL
				MS-649 B
			HEAT TREAT. SPEC.	
			S-404 YELLOW IRIDITE	
			FINISH & SPEC. NO.	

IF IT IS FOUND DESIRABLE TO CHANGE ANY TOLERANCE OR OTHER DETAIL SPECIFIED ON THIS DRAWING NOTIFY THE PURCHASER PROMPTLY.

MAXIMUM ALLOWABLE TOLERANCES HAVE BEEN DETERMINED AND DEVIATIONS WILL BE CAUSE FOR REJECTION. REMOVE ALL BURRS AND SHARP EDGES

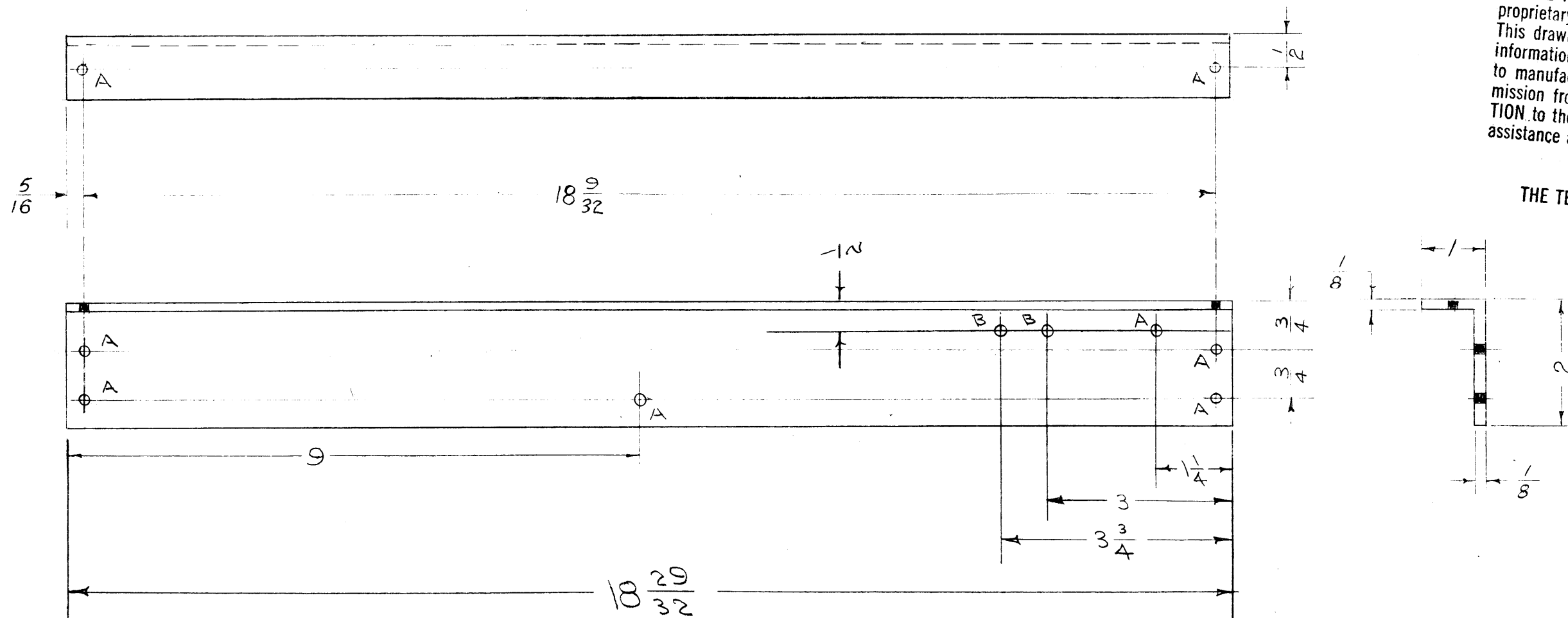
MS-671 B

A - 13/64 (.203) D. 8 HOLES REQ.
B - 9/64 (.140) D. 2 " "

NOTICE TO PERSONS RECEIVING THIS DRAWING

THE TECHNICAL MATERIEL CORPORATION claims proprietary right in the material disclosed hereon. This drawing is issued in confidence for engineering information only and may not be reproduced or used to manufacture anything shown hereon without permission from THE TECHNICAL MATERIEL CORPORATION to the user. This drawing is loaned for mutual assistance and is subject to recall at any time.

Property of:
THE TECHNICAL MATERIEL CORPORATION
MAMARONECK, NEW YORK



B	1	S-404 WAS S-101	12/11/59	1001	AB		EMN
A	1	"B" HOLES ADDED	4/17/60	1	COO	JAL	WC
ISSUE	ITEM	CHANGED FROM	DATE	CN. NO.	DRAFTS	CHECKER	ENG. APP.

TOLERANCES		SCALE:
ALL OTHERS	DEC. DIM. ± FRAC. DIM. ± 1/64 ANGULAR DIM. ±	DRILL, PUNCH, COMMERCIAL STOCK SIZES AND MANUFACTURERS TOLERANCES ARE NOT INCLUDED.

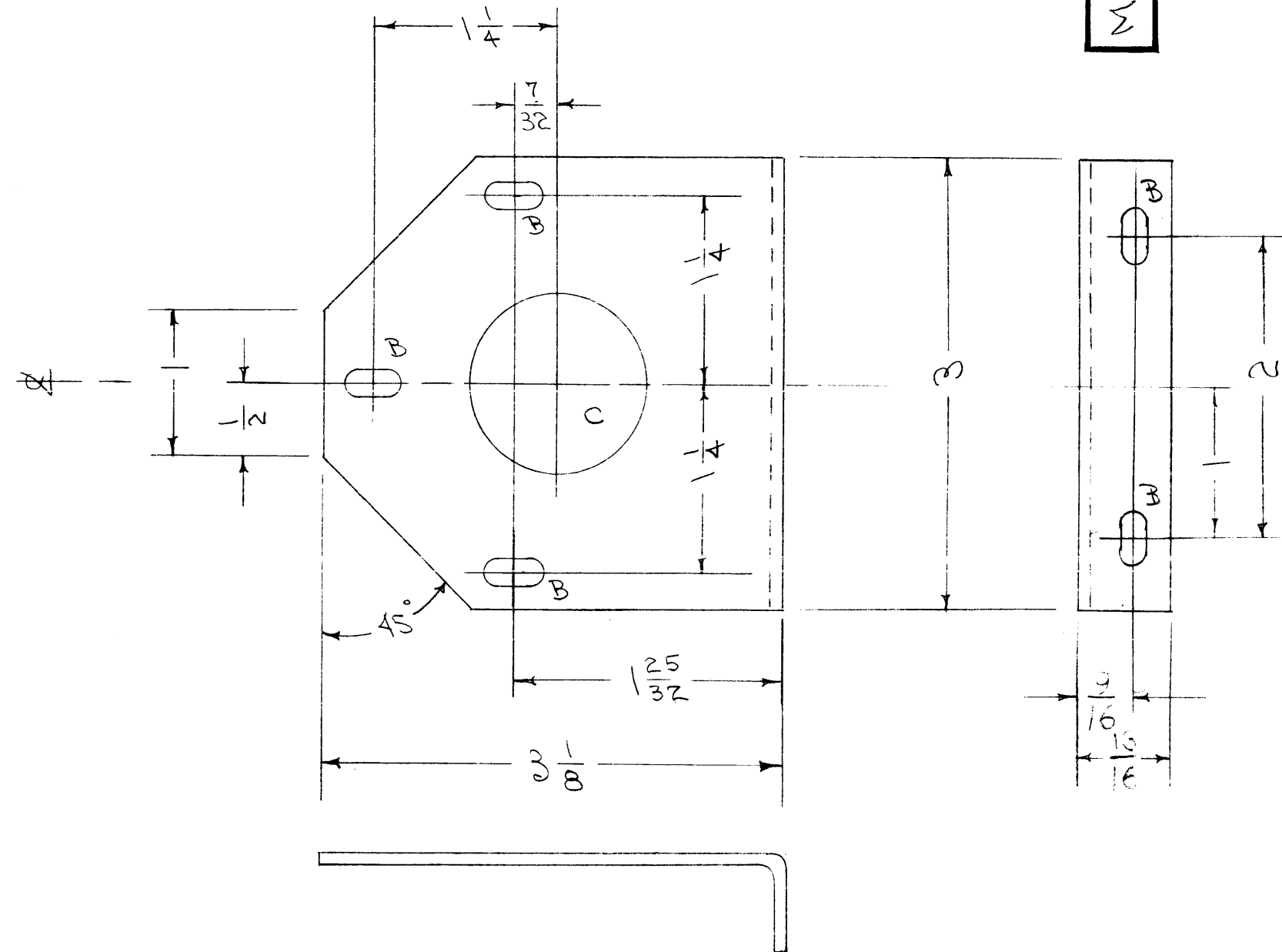
1	RTP		8-18-55
REQ. PER UNIT	MODEL	PROJECT NO.	ASS'Y. NO.
USED ON			

REQ. ITEM	PART NO.	DESCRIPTION	SYMBOL
	1/8 x 1 x 2	THE TECHNICAL MATERIEL CORP. MAMARONECK, NEW YORK	
	STOCK SIZE	REAR STIFFENER	
ALUMINUM		POWER SUPPLY GPT-750	
MATERIAL	WEIGHT PER PC.		
-6063 - T5			
TYPE & TEMPER		118-8-18-55	12/14/55
		DRAWN	ELEC. DES. APP.
		JAL	A.J.J.
HEAT TREAT. SPEC.		CHECKED	FINAL APPROVAL
S-404 YELLOW IRIDITE			
FINISH & SPEC. NO.			
			MS-671 B

IF IT IS FOUND DESIRABLE TO CHANGE ANY TOLERANCE OR OTHER DETAIL SPECIFIED ON THIS DRAWING NOTIFY THE PURCHASER PROMPTLY.

MAXIMUM ALLOWABLE TOLERANCES HAVE BEEN DETERMINED AND DEVIATIONS WILL BE CAUSE FOR REJECTION. REMOVE ALL BURRS AND SHARP EDGES

MS-683 C



B- 5/32 x 5/16
 C- 1/4 (1.250) DIA.
 5 SLOTS REQ.
 1 HOLE "

NOTICE TO PERSONS RECEIVING THIS DRAWING

THE TECHNICAL MATERIEL CORPORATION claims proprietary right in the material disclosed hereon. This drawing is issued in confidence for engineering information only and may not be reproduced or used to manufacture anything shown hereon without permission from THE TECHNICAL MATERIEL CORPORATION to the user. This drawing is loaned for mutual assistance and is subject to recall at any time.

Property of:
 THE TECHNICAL MATERIEL CORPORATION
 MAMARONECK, NEW YORK

C	1	S-404 WAS S-101	12/14/57	1001	AG	EMN	
B	1	QUAN. WAS 2 REQ.	8/20/56	2	EMN	EMN	
A	1	"A" HOLES CHGD. TO "B"	4/11/56	1	EMN	EMN	
ISSUE	ITEM	CHANGED FROM	DATE	CN. NO.	DRAFTS	CHECKER	ENG. APP.

TOLERANCES		SCALE:
ALL OTHERS	DEC. DIM. ± FRAC. DIM. ±1/64 ANGULAR DIM. ±	DRILL, PUNCH, COMMERCIAL STOCK SIZES AND MANUFACTURERS TOLERANCES ARE NOT INCLUDED.

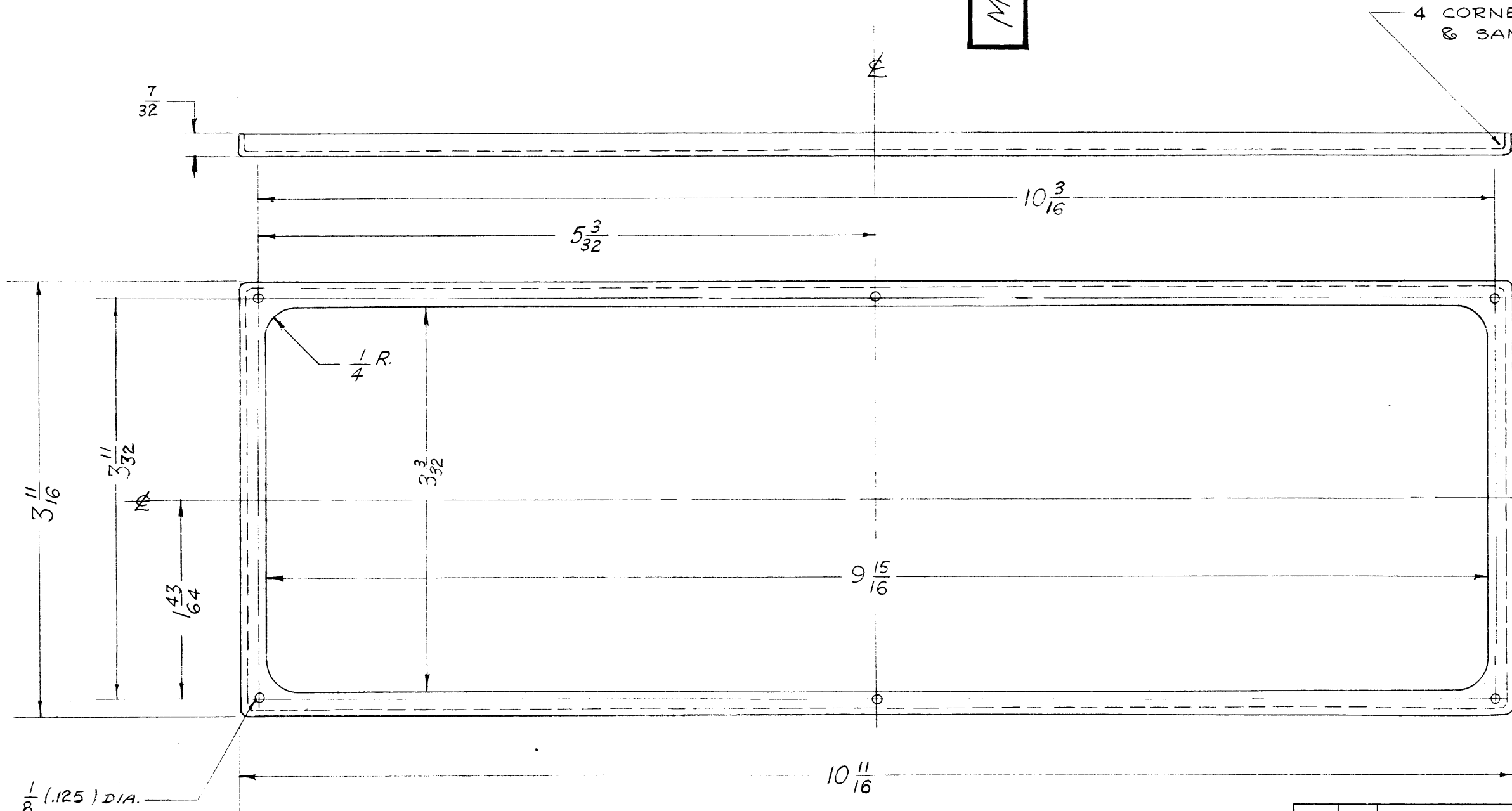
1	RTF			9-9-55
REQ. PER UNIT	MODEL	PROJECT NO.	ASS'Y. NO.	DATE

REQ.	ITEM	PART NO.	DESCRIPTION	SYMBOL
		.064	THE TECHNICAL MATERIEL CORP. MAMARONECK, NEW YORK	
STOCK SIZE				
ALUMINUM		#	BRACKET, COND. FRONT	
MATERIAL	WEIGHT PER PC.		Pow / AMP	RTF
5052	H32		ORD. 9-9-55	EMN 1/11/56
TYPE & TEMPER			DRAWN	ELEC. DES. APP. MECH. DES. APP.
HEAT TREAT. SPEC.			CHECKED	FINAL APPROVAL
FINISH & SPEC. NO.		S-404 YELLOW IRIDITE		
			MS-683	C

IF IT IS FOUND DESIRABLE TO CHANGE ANY TOLERANCE OR OTHER DETAIL SPECIFIED ON THIS DRAWING NOTIFY THE PURCHASER PROMPTLY.

MAXIMUM ALLOWABLE TOLERANCES HAVE BEEN DETERMINED AND DEVIATIONS WILL BE CAUSE FOR REJECTION. REMOVE ALL BURRS AND SHARP EDGES

MS-690 A



NOTICE TO PERSONS RECEIVING THIS DRAWING

THE TECHNICAL MATERIEL CORPORATION claims proprietary right in the material disclosed hereon. This drawing is issued in confidence for engineering information only and may not be reproduced or used to manufacture anything shown hereon without permission from THE TECHNICAL MATERIEL CORPORATION to the user. This drawing is loaned for mutual assistance and is subject to recall at any time.

Property of:
THE TECHNICAL MATERIEL CORPORATION
 MAMARONECK, NEW YORK

FINISH NOTE:
 S-404 YELLOW IRIDITE
 S-114-ZINC CHROMATE PRIMER
 S-115-SMOOTH GRAY ENAMEL

REQ.	ITEM	PART NO.	DESCRIPTION	SYMBOL
		.040 THK.	THE TECHNICAL MATERIEL CORP. MAMARONECK, NEW YORK	
		STOCK SIZE		
	ALUMINUM	#	BEZEL, FRONT PANEL	
		MATERIAL	WEIGHT PER PC.	
		52 S - H32	GPT	
		TYPE & TEMPER		
		HEAT TREAT. SPEC.		
		SEE NOTE		
		FINISH & SPEC. NO.		

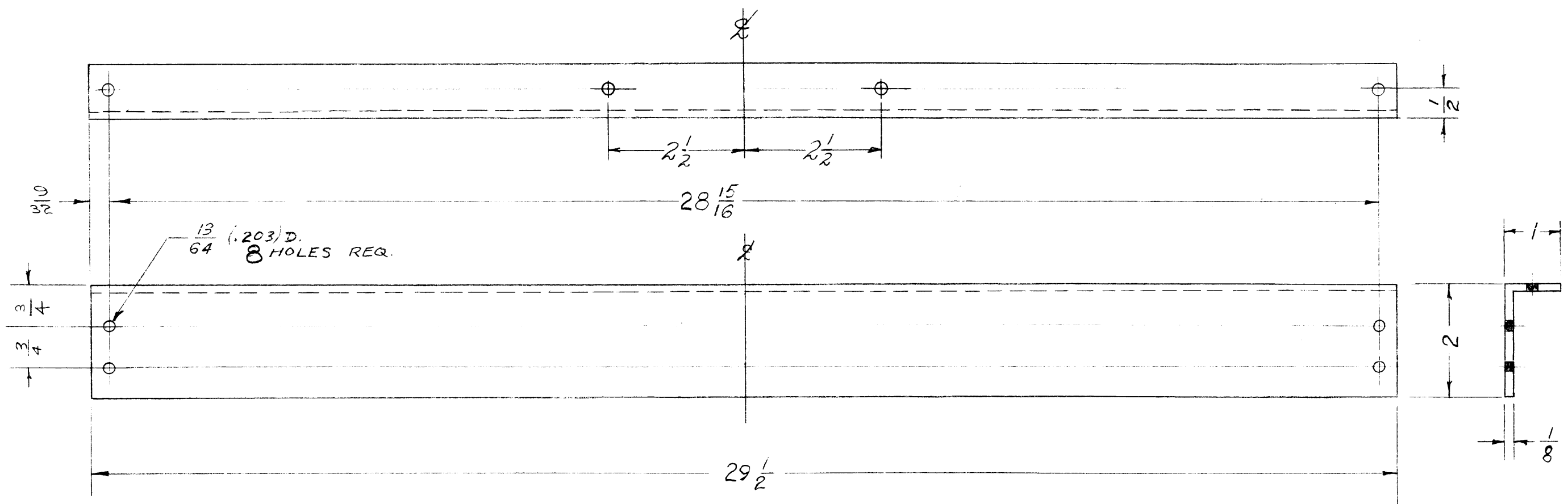
A	1	S-404 WAS S-101	12/1/58	1001	AL		EMN
ISSUE	ITEM	CHANGED FROM	DATE	CN. NO.	DRAFTS	CHECKER	ENG. APP.
TOLERANCES		SCALE:					
ALL OTHERS	DEC. DIM. ±	DRILL, PUNCH, COMMERCIAL STOCK					
	FRAC. DIM. ±	SIZES AND MANUFACTURERS					
	ANGULAR DIM. ±	TOLERANCES ARE NOT INCLUDED.					

1	RTF-2	F/P		11-19-58
1	RTF			9-22-55
REQ. PER UNIT	MODEL	PROJECT NO.	ASS'Y. NO.	DATE
USED ON				

IF IT IS FOUND DESIRABLE TO CHANGE ANY TOLERANCE OR OTHER DETAIL SPECIFIED ON THIS DRAWING NOTIFY THE PURCHASER PROMPTLY.

MAXIMUM ALLOWABLE TOLERANCES HAVE BEEN DETERMINED AND DEVIATIONS WILL BE CAUSE FOR REJECTION. REMOVE ALL BURRS AND SHARP EDGES

MS-691 B



NOT TO BE REPRODUCED BY ANY PERSON RECEIVING THIS DRAWING

THE TECHNICAL MATERIEL CORPORATION claims proprietary right in the material disclosed hereon. This drawing is issued in confidence for engineering information only and may not be reproduced or used to manufacture anything shown hereon without permission from THE TECHNICAL MATERIEL CORPORATION to the user. This drawing is loaned for mutual assistance and is subject to recall at any time.

Property of:
THE TECHNICAL MATERIEL CORPORATION
 MAMARONECK, NEW YORK

B	1	S-404 WAS S-101	4/14/59	1001	AS		EMN
A	1	ADDED 2 & 2 HOLES	11/11/58		AWC	HS	DP
ISSUE	ITEM	CHANGED FROM	DATE	CN. NO.	DRAFTS	CHECKER	ENG. APP.
TOLERANCES			SCALE: NOT TO SCALE				
ALL OTHERS	DEC. DIM. ± FRAC. DIM. ± ANGULAR DIM. ±		DRILL, PUNCH, COMMERCIAL STOCK SIZES AND MANUFACTURERS TOLERANCES ARE NOT INCLUDED.				

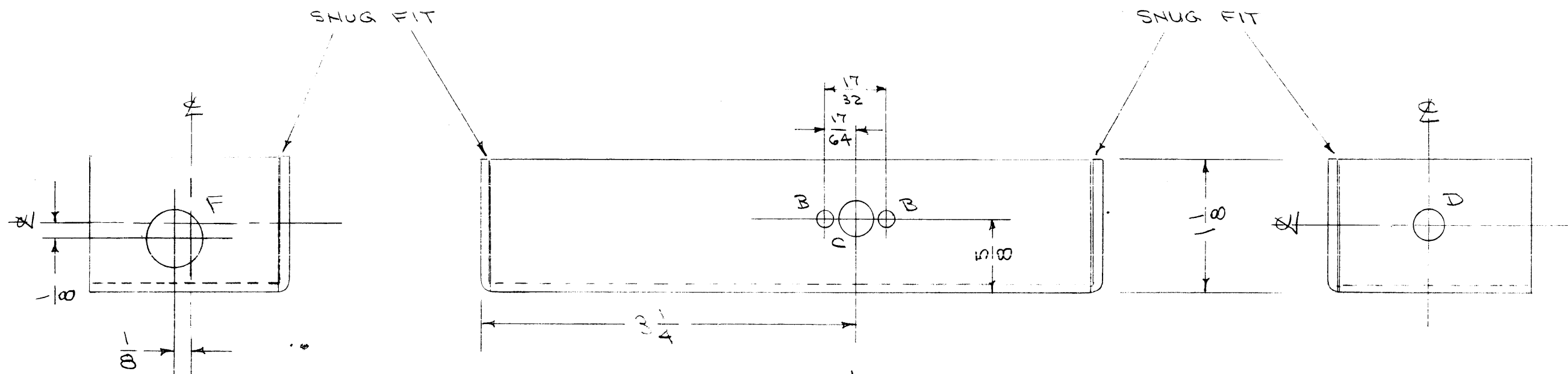
1	RTM-2		10-16-58
1	A-959		3-28-56
1	RTM		9-22-55
REQ. PER UNIT	MODEL	PROJECT NO.	ASS'Y. NO.
			DATE
USED ON			

REQ.	ITEM	PART NO.	DESCRIPTION	SYMBOL
		1/8 x 1 x 2	THE TECHNICAL MATERIEL CORP. MAMARONECK, NEW YORK	
		STOCK SIZE	REAR STIFFENER	
	ALUMINUM	—H—	MODULATOR DECK — GPT 750	
	MATERIAL	WEIGHT PER PC.	B 9-22-55	AWC 11/01/55
			DRAWN	ELEC. DES. APP.
			CHECKED	MECH. DES. APP.
			FINAL APPROVAL	
			A.J.J.	
			MS-691	
			B	
			S-404 YELLOW IRIDITE	
			FINISH & SPEC. NO.	

IF IT IS FOUND DESIRABLE TO CHANGE ANY TOLERANCE OR OTHER DETAIL SPECIFIED ON THIS DRAWING NOTIFY THE PURCHASER PROMPTLY.

MAXIMUM ALLOWABLE TOLERANCES HAVE BEEN DETERMINED AND DEVIATIONS WILL BE CAUSE FOR REJECTION. REMOVE ALL BURRS AND SHARP EDGES

MS-693 A



- A - 1/8 (.125) DIA. 2 HOLES REQ
- B - 9/64 (.140) " 5 " "
- C - 9/32 (.281) " 1 " "
- D - 5/16 (.312) " 2 " "
- E - 3/8 (.375) " 2 " "
- F - 1/2 (.500) " 1 " "
- G - 5/8 (.625) " 1 " "
- J - DRILL & SINK #6 F.H.S.-1 " "

NOTICE TO PERSONS RECEIVING THIS DRAWING

THE TECHNICAL MATERIEL CORPORATION claims proprietary right in the material disclosed hereon. This drawing is issued in confidence for engineering information only and may not be reproduced or used to manufacture anything shown hereon without permission from THE TECHNICAL MATERIEL CORPORATION to the user. This drawing is loaned for mutual assistance and is subject to recall at any time.

Property of:

THE TECHNICAL MATERIEL CORPORATION
MAMARONECK, NEW YORK

REF. DWG. - MS-694

REQ.	ITEM	PART NO.	DESCRIPTION	SYMBOL
		.064	THE TECHNICAL MATERIEL CORP. MAMARONECK, NEW YORK	
STOCK SIZE			CHASSIS, GPC CALBRATOR	
ALUMINUM				
MATERIAL		WEIGHT PER PC.		
52S H 32				
TYPE & TEMPER				
		COND. 9/23/55		
HEAT TREAT. SPEC.				
			G.T.O.	
FINISH & SPEC. NO.				
			MS-693	A

ISSUE	ITEM	CHANGED FROM	DATE	CN. NO.	DRAFTS	CHECKER	ENG. APP.
A	1	S-404 WAS S-101	12/14/59	1001	MS		EMN

TOLERANCES		SCALE:
ALL OTHERS	DEC. DIM. ± FRAC. DIM. ± 1/64 ANGULAR DIM. ±	DRILL, PUNCH, COMMERCIAL STOCK SIZES AND MANUFACTURERS TOLERANCES ARE NOT INCLUDED.

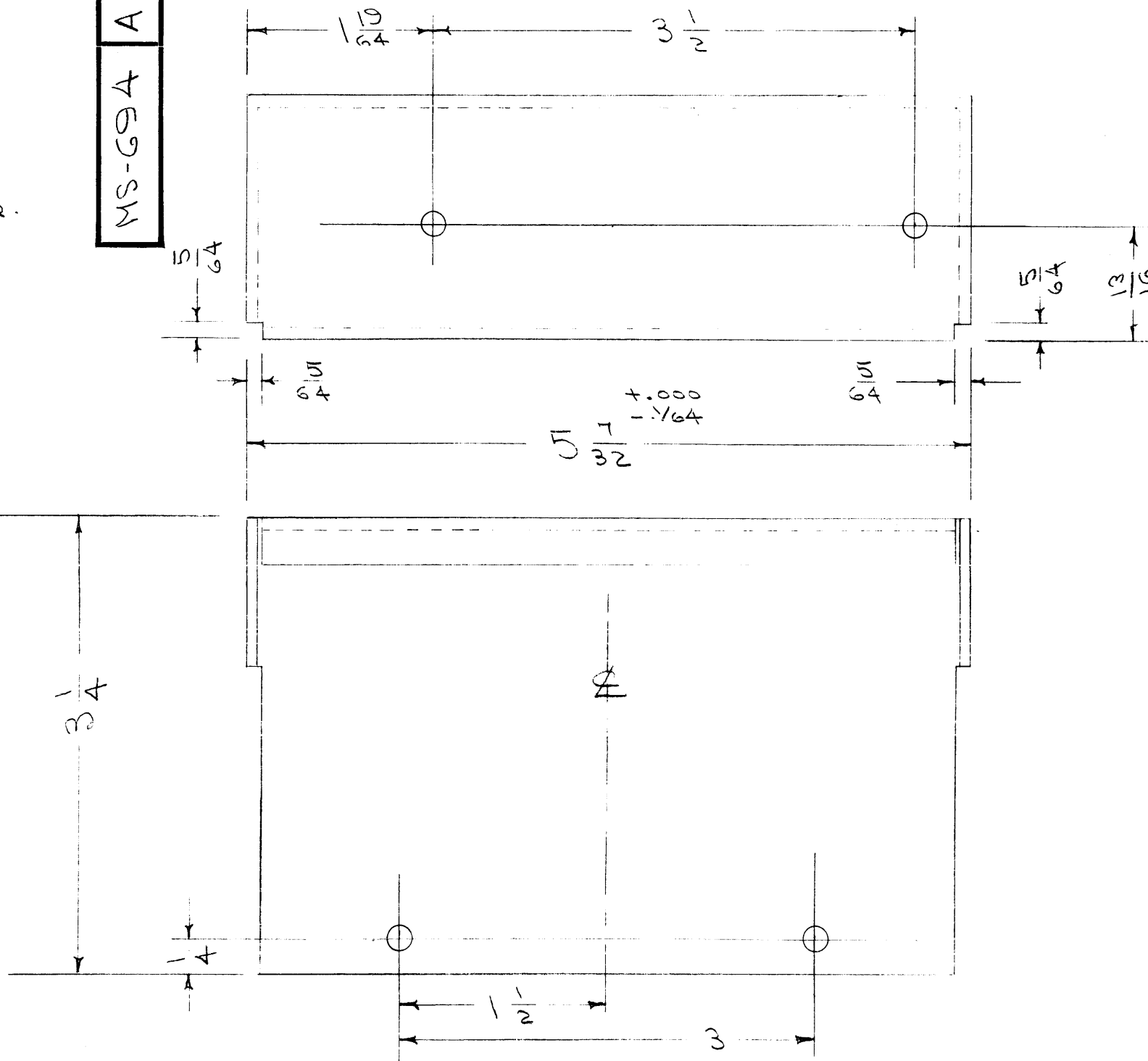
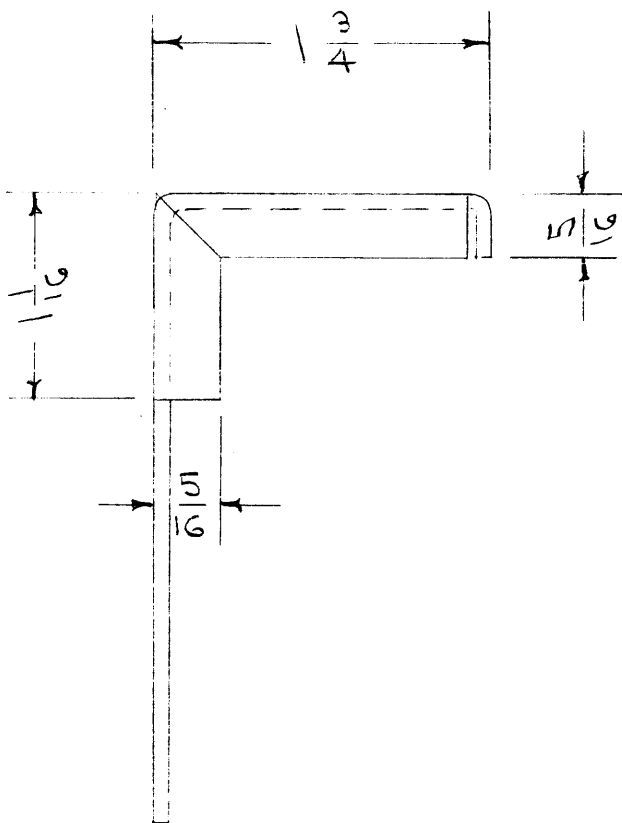
REQ. PER UNIT	MODEL	PROJECT NO.	ASS'Y. NO.	DATE
1	XTAL-CAL.			

IF IT IS FOUND DESIRABLE TO CHANGE ANY TOLERANCE OR OTHER DETAIL SPECIFIED ON THIS DRAWING NOTIFY THE PURCHASER PROMPTLY.

MAXIMUM ALLOWABLE TOLERANCES HAVE BEEN DETERMINED AND DEVIATIONS WILL BE CAUSE FOR REJECTION. REMOVE ALL BURRS AND SHARP EDGES

HOLES - 3/16 (.187) D. 4 REQ.

MS-694 A



NOTICE TO PERSONS RECEIVING THIS DRAWING

THE TECHNICAL MATERIEL CORPORATION claims proprietary right in the material disclosed hereon. This drawing is issued in confidence for engineering information only and may not be reproduced or used to manufacture anything shown hereon without permission from THE TECHNICAL MATERIEL CORPORATION to the user. This drawing is loaned for mutual assistance and is subject to recall at any time.

Property of:
THE TECHNICAL MATERIEL CORPORATION
MAMARONECK, NEW YORK

REF. DWG. MS-693

REQ.	ITEM	PART NO.	DESCRIPTION	SYMBOL
	.064		THE TECHNICAL MATERIEL CORP. MAMARONECK, NEW YORK	
	ALUMINUM	—	COVER, GPC CALIBRATOR	
	52S H32		ODD 9/23/55	WDC
			DRAWN	ELEC. DES. APP. MECH. DES. APP.
			CHECKED	FINAL APPROVAL
	S-404	YELLOW IRIDITE		MS-694 A

ISSUE	ITEM	CHANGED FROM	DATE	CN. NO.	DRAFTS	CHECKER	ENG. APP.
A	1	S-404 WAS S-101	12/14/59	1001	AS		EMN

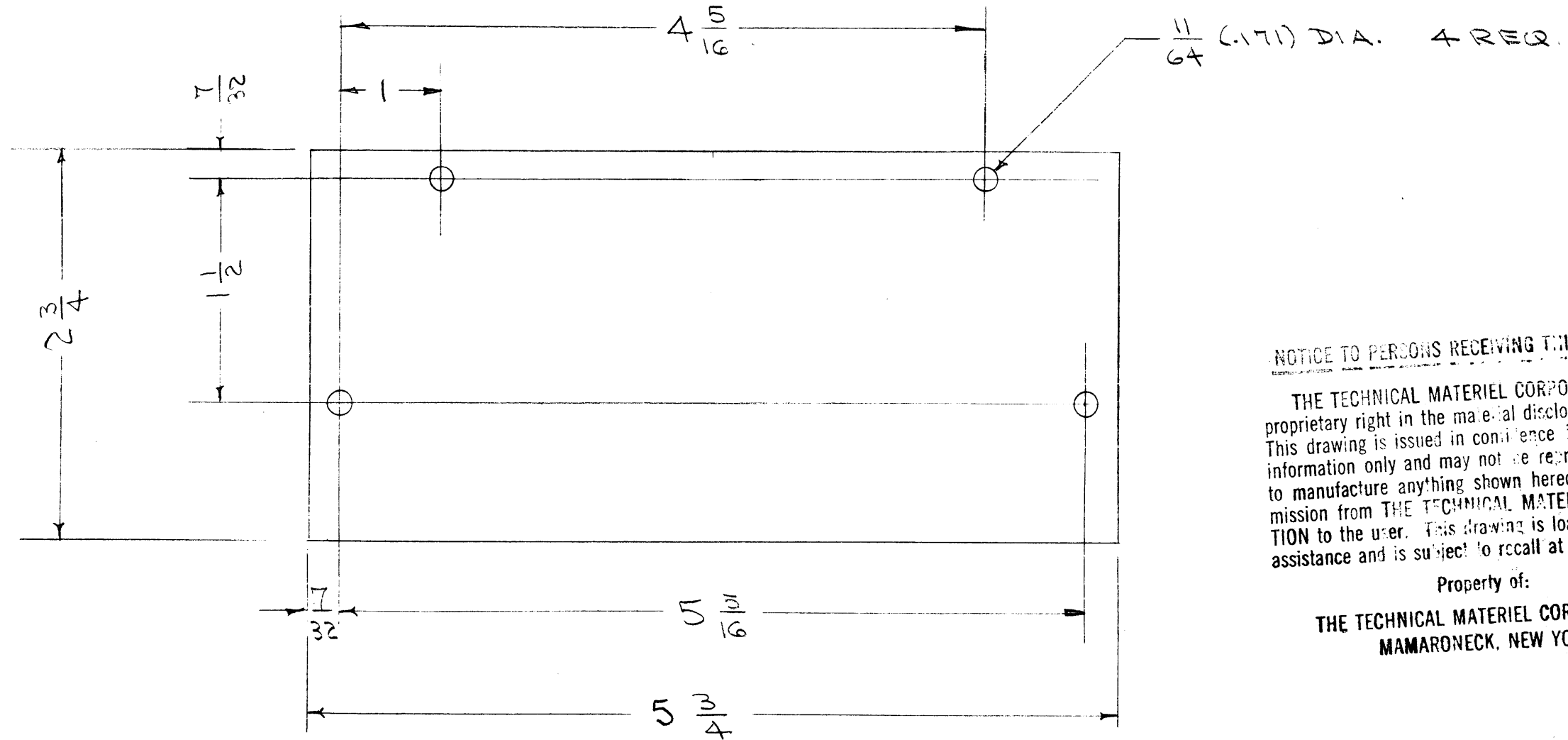
TOLERANCES	SCALE:
ALL OTHERS DEC. DIM. ± FRAC. DIM. ± 1/64 ANGULAR DIM. ±	DRILL, PUNCH, COMMERCIAL STOCK SIZES AND MANUFACTURERS TOLERANCES ARE NOT INCLUDED.

REQ. PER UNIT	MODEL	PROJECT NO.	ASS'Y. NO.	DATE	USED ON
1	XTAL-CAL				

IF IT IS FOUND DESIRABLE TO CHANGE ANY TOLERANCE OR OTHER DETAIL SPECIFIED ON THIS DRAWING NOTIFY THE PURCHASER PROMPTLY.

MAXIMUM ALLOWABLE TOLERANCES HAVE BEEN DETERMINED AND DEVIATIONS WILL BE CAUSE FOR REJECTION. REMOVE ALL BURRS AND SHARP EDGES

MS-697 A



NOTICE TO PERSONS RECEIVING THIS DRAWING

THE TECHNICAL MATERIEL CORPORATION claims proprietary right in the material disclosed hereon. This drawing is issued in confidence for engineering information only and may not be reproduced or used to manufacture anything shown hereon without permission from THE TECHNICAL MATERIEL CORPORATION to the user. This drawing is loaned for mutual assistance and is subject to recall at any time.

Property of:

THE TECHNICAL MATERIEL CORPORATION
MAMARONECK, NEW YORK

A	1	S-404 WAS S-101	12/4/54	1001	RB		EMN
ISSUE	ITEM	CHANGED FROM	DATE	CN. NO.	DRAFTS	CHECKER	ENG. APP.
TOLERANCES		SCALE:					
ALL OTHERS	DEC. DIM. \pm FRAC. DIM. $\pm \frac{1}{64}$ ANGULAR DIM. \pm		DRILL, PUNCH, COMMERCIAL STOCK SIZES AND MANUFACTURERS TOLERANCES ARE NOT INCLUDED.				

1	RTF			5-23-55
REQ. PER UNIT	MODEL	PROJECT NO.	ASS'Y. NO.	DATE
USED ON				

REQ.	ITEM	PART NO.	DESCRIPTION	SYMBOL																
		.051	THE TECHNICAL MATERIEL CORP. MAMARONECK, NEW YORK																	
		ALUMINUM	END PLATE, MULTIPLIER																	
		52S H32	CHASSIS RTF, GPT-750																	
			<table border="1"> <tr> <td>CDP 9/23/55</td> <td>AB</td> <td>12/20/55</td> <td>WCC</td> </tr> <tr> <td>DRAWN</td> <td>ELEC. DES. APP.</td> <td>MECH. DES. APP.</td> <td></td> </tr> <tr> <td>J. A. De</td> <td>A. J. J.</td> <td></td> <td></td> </tr> <tr> <td>CHECKED</td> <td>FINAL APPROVAL</td> <td></td> <td></td> </tr> </table>	CDP 9/23/55	AB	12/20/55	WCC	DRAWN	ELEC. DES. APP.	MECH. DES. APP.		J. A. De	A. J. J.			CHECKED	FINAL APPROVAL			
CDP 9/23/55	AB	12/20/55	WCC																	
DRAWN	ELEC. DES. APP.	MECH. DES. APP.																		
J. A. De	A. J. J.																			
CHECKED	FINAL APPROVAL																			
		S-404 YELLOW IRIDITE																		
				MS-697 A																