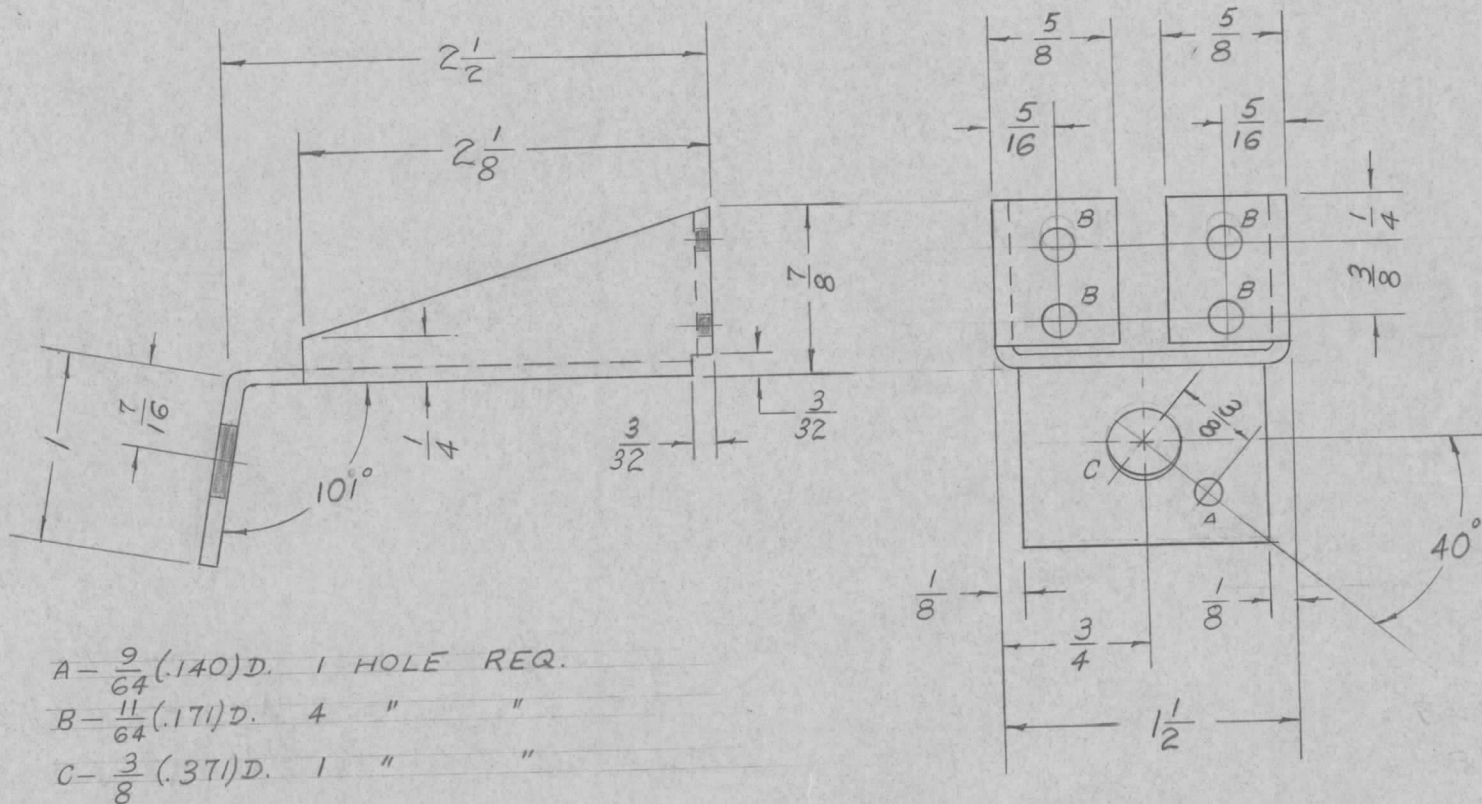


REQ. PER UNIT	USED ON			MS-696	B
	MODEL	ASS'Y. NO.	DATE		
1	RTF		9-23-55		
1	RTF-2	MULT.	11-20-58		



ISSUE	ITEM	CHANGED FROM	DATE	CH. NO.	DRAFTS	CHECKER	ENG. APP.	REQ. ITEM	PART NO.	DESCRIPTION	SYMBOL	
									.081	THE TECHNICAL MATERIEL CORP. MAMARONECK, NEW YORK		
									STOCK SIZE	BRACKET, - R.F. OUTPUT SWITCH		
B	1	5404- IRIDITE WAS S101- CAUSTIC DIP	12-7 59	1001	P		EMN		ALUMINUM	MULTIPLIER CHASSIS GPT-750		
A		COMPLETELY REVISED	1-23-56	1	PB	JMS	WE		MATERIAL			
TOLERANCES			SCALE:									
DEC. DIM. $\pm$			MAXIMUM ALLOWABLE TOLERANCES HAVE BEEN DETERMINED AND ANY DEVIATIONS WILL BE CAUSE FOR REJECTION.									
FRAC. DIM. $\pm$ $\frac{1}{64}$			REMOVE ALL BURRS AND SHARP EDGES									
ANGULAR DIM. $\pm$ $\frac{1}{2}^\circ$												
								52S-H32		PB 9-23-55	JMS	WE
								TYPE & TEMPER	HEAT TREAT. SPEC.	DRAWN	CHECKED	FINAL APPROVAL
								5404 IRIDITE			WE	
								FINISH & SPEC. NO.		ELEC. DES. APP.	MECH. DES. APP.	MS-696 B