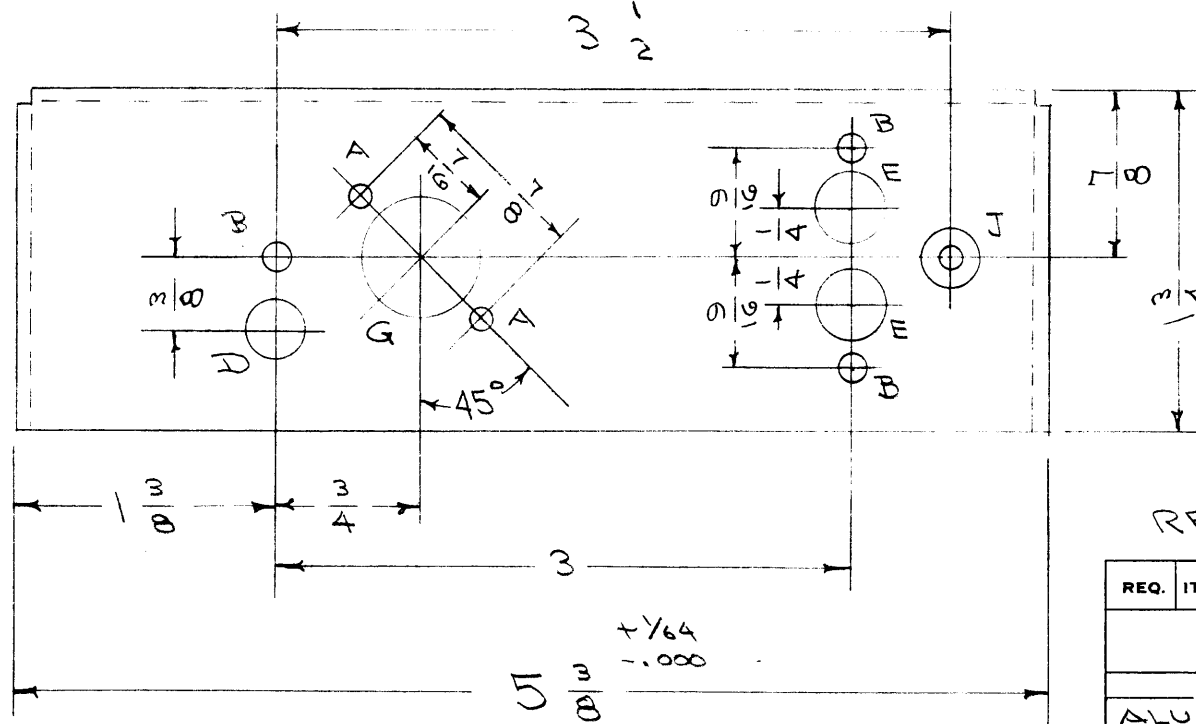
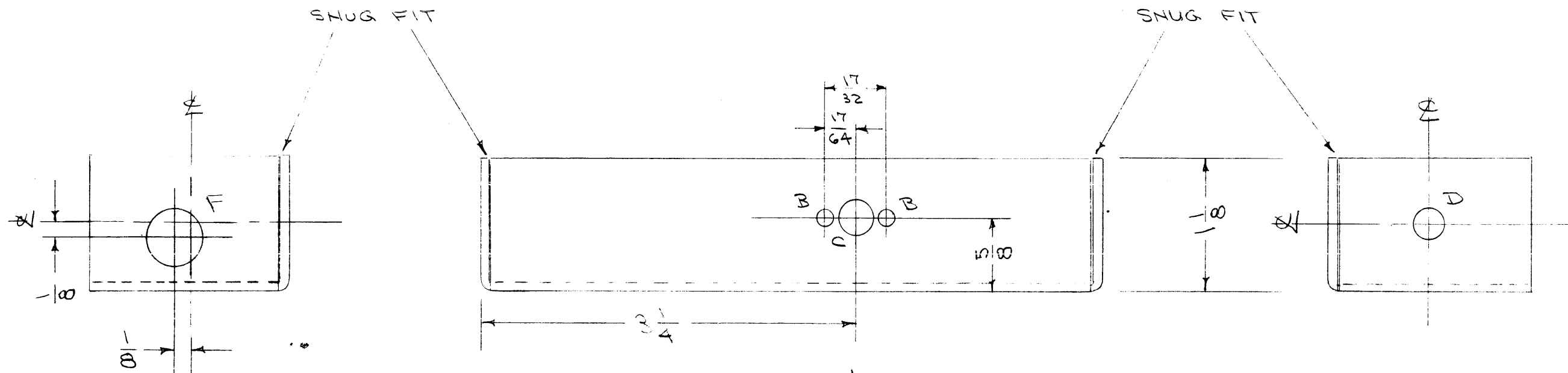


IF IT IS FOUND DESIRABLE TO CHANGE ANY TOLERANCE OR OTHER DETAIL SPECIFIED ON THIS DRAWING NOTIFY THE PURCHASER PROMPTLY.

MAXIMUM ALLOWABLE TOLERANCES HAVE BEEN DETERMINED AND DEVIATIONS WILL BE CAUSE FOR REJECTION. REMOVE ALL BURRS AND SHARP EDGES

MS-693 A



- A - 1/8 (.125) DIA. 2 HOLES REQ
- B - 9/64 (.140) " 5 " "
- C - 9/32 (.281) " 1 " "
- D - 5/16 (.312) " 2 " "
- E - 3/8 (.375) " 2 " "
- F - 1/2 (.500) " 1 " "
- G - 5/8 (.625) " 1 " "
- J - DRILL & SINK #6 F.H.S.-1 " "

NOTICE TO PERSONS RECEIVING THIS DRAWING

THE TECHNICAL MATERIEL CORPORATION claims proprietary right in the material disclosed hereon. This drawing is issued in confidence for engineering information only and may not be reproduced or used to manufacture anything shown hereon without permission from THE TECHNICAL MATERIEL CORPORATION to the user. This drawing is loaned for mutual assistance and is subject to recall at any time.

Property of:

THE TECHNICAL MATERIEL CORPORATION
MAMARONECK, NEW YORK

REF. DWG. - MS-694

REQ.	ITEM	PART NO.	DESCRIPTION	SYMBOL
		.064	THE TECHNICAL MATERIEL CORP. MAMARONECK, NEW YORK	
STOCK SIZE			CHASSIS, GPC CALIBRATOR	
MATERIAL		ALUMINUM		
WEIGHT PER PC.		52S H 32		
TYPE & TEMPER			COO. 9/23/55	W
HEAT TREAT. SPEC.			DRAWN	ELEC. DES. APP.
			G.T.O.	MECH. DES. APP.
			CHECKED	FINAL APPROVAL
FINISH & SPEC. NO.		S-404 YELLOW IRIDITE		MS-693 A

ISSUE	ITEM	CHANGED FROM	DATE	CN. NO.	DRAFTS	CHECKER	ENG. APP.
A	1	S-404 WAS S-101	12/14/59	1001	MS		EMN

TOLERANCES		SCALE:
ALL OTHERS	DEC. DIM. ± FRAC. DIM. ± 1/64 ANGULAR DIM. ±	DRILL, PUNCH, COMMERCIAL STOCK SIZES AND MANUFACTURERS TOLERANCES ARE NOT INCLUDED.

REQ. PER UNIT	MODEL	PROJECT NO.	ASS'Y. NO.	DATE
1	XTAL-CAL.			