

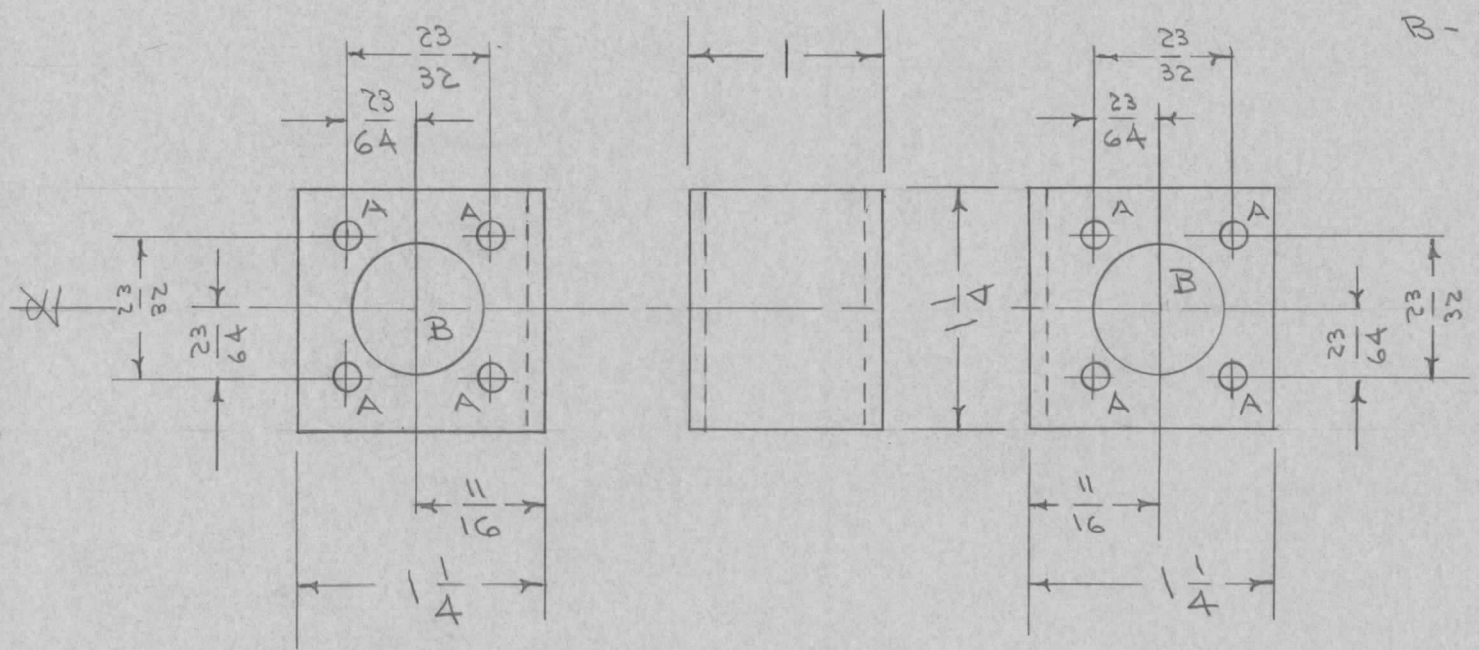
IF IT IS FOUND DESIRABLE TO CHANGE ANY TOLERANCE OR OTHER DETAIL SPECIFIED ON THIS DRAWING NOTIFY THE PURCHASER PROMPTLY.

MS-681 A

MAXIMUM ALLOWABLE TOLERANCES HAVE BEEN DETERMINED AND DEVIATIONS WILL BE CAUSE FOR REJECTION. REMOVE ALL BURRS AND SHARP EDGES

| REQ. PER UNIT | USED ON | | | |
|---------------|---------|-------------|------------|---------|
| | MODEL | PROJECT NO. | ASS'Y. NO. | DATE |
| 1 | AMC-6 | | | 8-29-55 |

A - 9/64 (.140) D. 8 HOLES
 B - 1/16 (.687) D. 2 "



| REQ. | ITEM | PART NO. | DESCRIPTION | SYMBOL |
|------|----------|--------------------|------------------------------|---------------------------------|
| | | .081 | THE TECHNICAL MATERIEL CORP. | |
| | | STOCK SIZE | MAMARONECK. NEW YORK | |
| | ALUMINUM | # | BRACKET, COAX. CONNECTOR | |
| | MATERIAL | WEIGHT PER PC. | AMC-6 | |
| | | 52S H32 | CDD. 8/29/55 | WDC |
| | | TYPE & TEMPER | DRAWN | ELEC. DES. APP. MECH. DES. APP. |
| | | # | WDC | WDC |
| | | HEAT TREAT. SPEC. | CHECKED | FINAL APPROVAL |
| | | S404-IRIDITE | | MS-681 A |
| | | FINISH & SPEC. NO. | | |

| | | | | | | | |
|------------|--|--------------------------------------|---|---------|--------|---------|-----------|
| A | 1 | S404-IRIDITE WAS 5101-CAUSTIC DIP | 12-7 59 | 1001 | W | EMN | |
| ISSUE | ITEM | CHANGED FROM | DATE | CN. NO. | DRAFTS | CHECKER | ENG. APP. |
| TOLERANCES | | | SCALE | | | | |
| ALL OTHERS | DEC. DIM. ± FRAC. DIM. ± 1/64 ANGULAR DIM. ± | | DRILL, PUNCH, COMMERCIAL STOCK SIZES AND MANUFACTURERS TOLERANCES ARE NOT INCLUDED. | | | | |