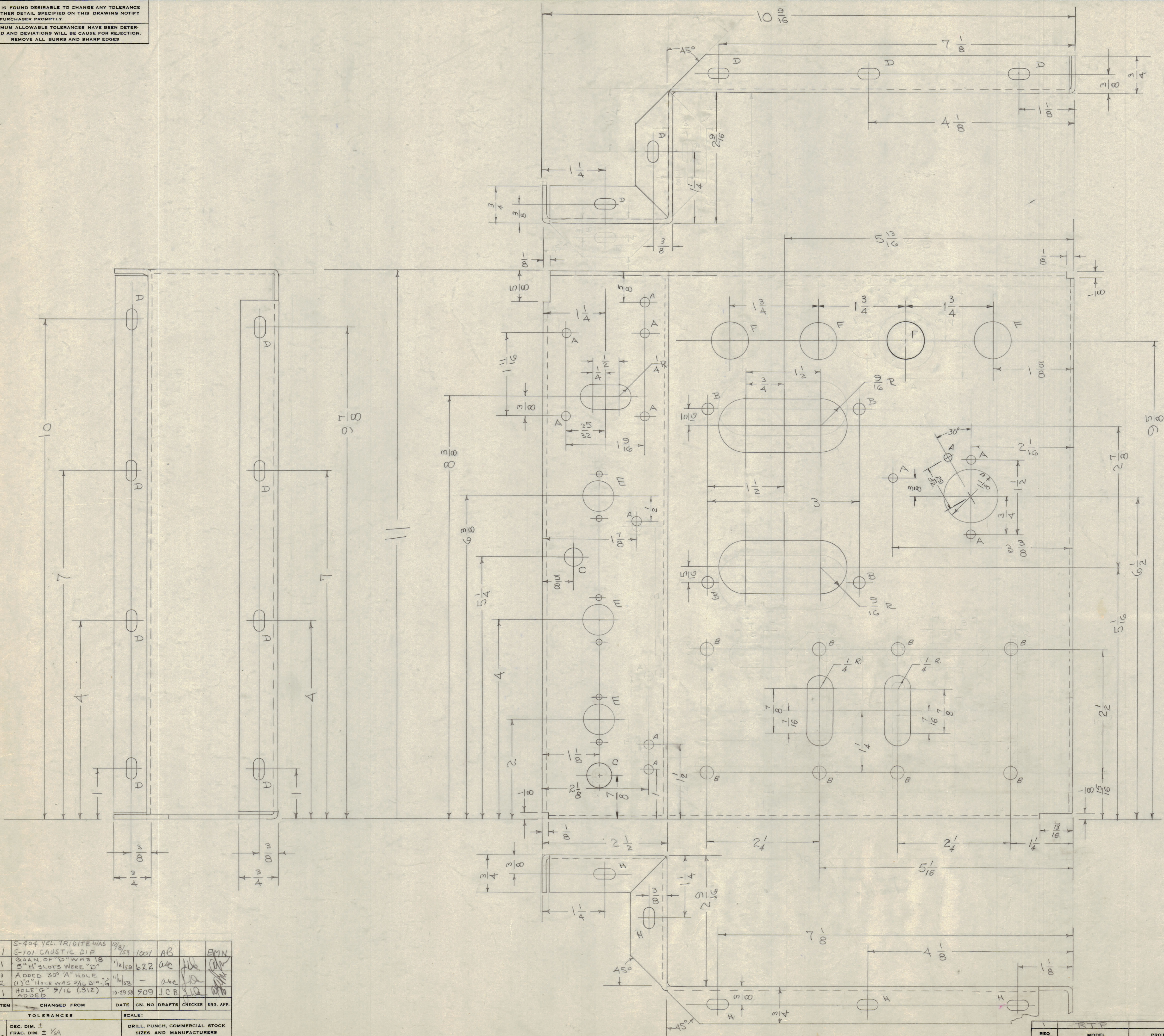


IF IT IS FOUND DESIRABLE TO CHANGE ANY TOLERANCE OR OTHER DETAIL SPECIFIED ON THIS DRAWING NOTIFY THE PURCHASER PROMPTLY.  
 MAXIMUM ALLOWABLE TOLERANCES HAVE BEEN DETERMINED AND DEVIATIONS WILL BE CAUSE FOR REJECTION. REMOVE ALL BURRS AND SHARP EDGES

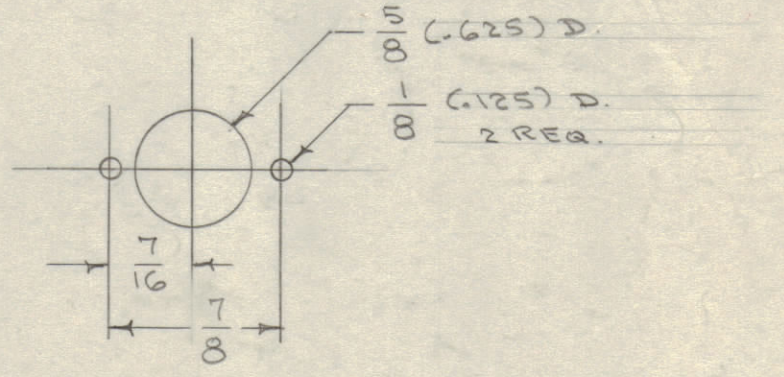
NOTICE TO PERSONS RECEIVING THIS DRAWING

THE TECHNICAL MATERIEL CORPORATION claims proprietary right in the material disclosed hereon. This drawing is issued in confidence for engineering information only and may not be reproduced or used to manufacture anything shown hereon without permission from THE TECHNICAL MATERIEL CORPORATION to the user. This drawing is loaned for mutual assistance and is subject to recall at any time.

Property of:  
 THE TECHNICAL MATERIEL CORPORATION  
 MAMARONECK, NEW YORK



- A - 1/16 (.171) DIA. 12 HOLES REQ.
- B - 1/4 (.250) " 12 " " "
- C - 1/2 (.500) " 12 " " "
- D - 1/8 x 1/32 SLOTS 18 SLOTS " "
- E - 7 PIN MIN. 3 REQ.
- F - 3/4 (.750) DIA 3 HOLES REQ.
- H - 1 3/4 x 1 3/32 SLOTS 5 REQ.



- F - 3/4 (.750) DIA 3 HOLES REQ.
- H - 1 3/4 x 1 3/32 SLOTS 5 REQ.

MS-669 D

D	1	S-404 YEL. TRIDITE WAS 5-101 CAUSTIC DIP	10/21	1001	AB		EMN
C	1	QUAN. OF SLOTS WAS 18 5"H SLOTS WERE 10"	12/50	622	arc		
B	2	ADDED 30° A" HOLE 1/8" HOLE WAS 5/16 DIA. 1/8"	11/15		arc		
A	1	HOLE G = 5/16 (.312) ADDED	10/29/55	509	JCB		
ISSUE ITEM		CHANGED FROM	DATE	CN. NO.	DRAFTS	CHECKER	ENG. APP.
TOLERANCES		SCALE:					
ALL OTHERS	DEC. DIM. ±	DRILL, PUNCH, COMMERCIAL STOCK SIZES AND MANUFACTURERS TOLERANCES ARE NOT INCLUDED.					
	FRAC. DIM. ± 1/64						
	ANGULAR DIM. ± 2°						

REF: MS-668 LD-249

REQ. ITEM	PART NO.	DESCRIPTION	SYMBOL
.081		THE TECHNICAL MATERIEL CORP. MAMARONECK, NEW YORK	
STOCK SIZE			
ALUMINUM	4	CHASSIS, SUB	
MATERIAL	WEIGHT PER PC.		
5052	H32		
TYPE & TEMPER			
HEAT TREAT. SPEC.			
FINISH & SPEC. NO.			

REQ. PER UNIT	MODEL	PROJECT NO.	ASSY. NO.	DATE
1	RIP			8-11-55