

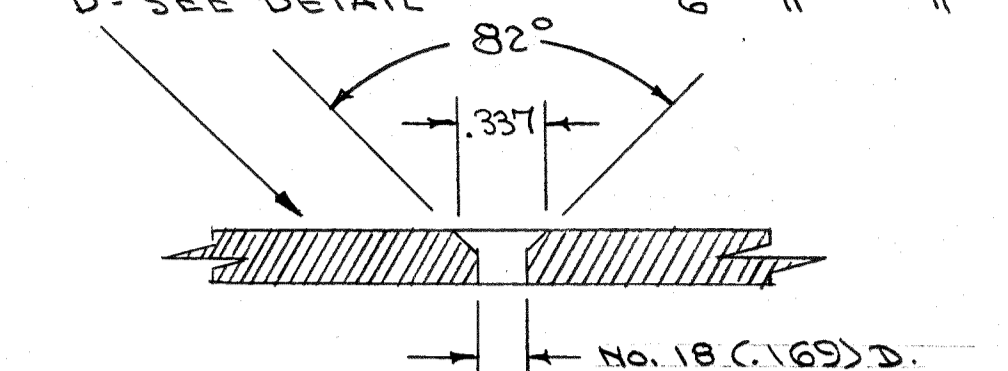
IF IT IS FOUND DESIRABLE TO CHANGE ANY TOLERANCE OR OTHER DETAIL SPECIFIED ON THIS DRAWING NOTIFY THE PURCHASER PROMPTLY.  
 MAXIMUM ALLOWABLE TOLERANCES HAVE BEEN DETERMINED AND DEVIATIONS WILL BE CAUSE FOR REJECTION. REMOVE ALL BURRS AND SHARP EDGES

**NOTICE TO PERSONS RECEIVING THIS DRAWING**

THE TECHNICAL MATERIEL CORPORATION claims copyright in the material disclosed hereon. This drawing is issued in confidence for engineering purposes only and may not be reproduced or used to manufacture anything herein without permission from THE TECHNICAL MATERIEL CORPORATION to the user. This drawing is loaned for mutual assistance and is subject to recall at any time.

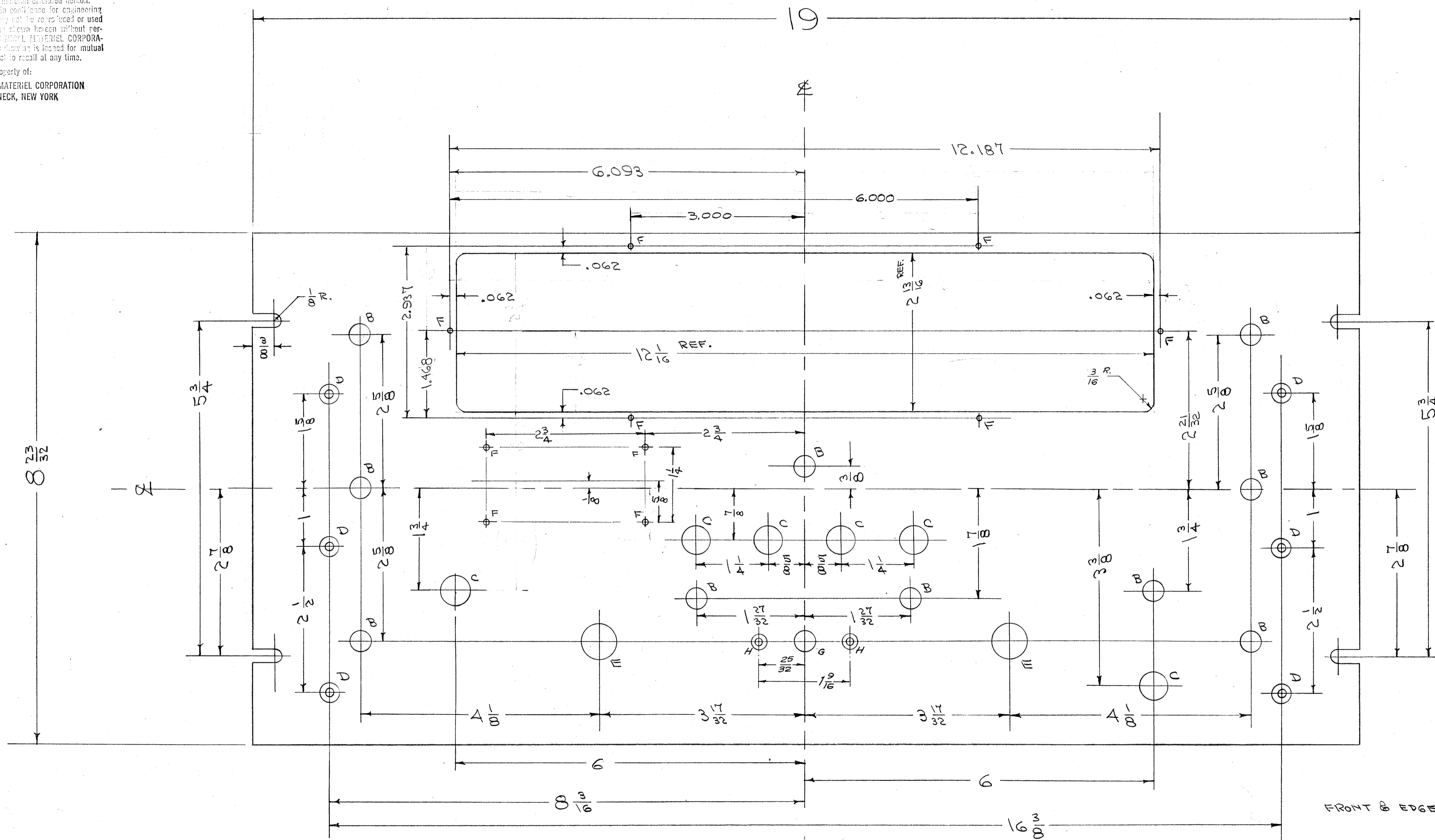
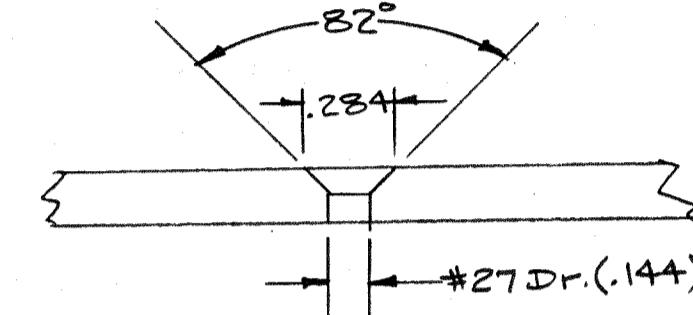
Property of:  
 THE TECHNICAL MATERIEL CORPORATION  
 MAMARONECK, NEW YORK

B- 25/64 (.390) D. 10 HOLES REQ.  
 C- 3/16 (.1875) D. 6 " "  
 D- SEE DETAIL 6 " "



E- 5/8 (.625) D. 2 HOLES REQ.  
 F- No A7 (.078) D. 10 " "  
 G- 17/32 (.531) D. 1 " "

H- Drill & Sink for No. 6-32 FHS- 2 Req.



FRONT OF PANEL

FRONT & EDGES ONLY

NOTE: FINISH  
 S-404 IRIDITE  
 S-114 ZINC CHROMATE PRIMER  
 S-115 SMOOTH GRAY ENAMEL  
 OR- PRIME & PAINT TO CUSTOMER'S SPECIFICATION.

H	1	S-404 IRIDITE WAS S-101 CAUSTIC DIP	10/15/55	1001	AB	EM	WJC
G	1	TWO "H" HOLES ADDED TO ACCOM. NEW LOCATION OF DETENT B WAS 2 1/2	7/22/55	7	16	WJC	WJC
F	1	2 1/2 WAS 2 1/16	7/22/55	C	MR	WJC	WJC
E	1	SIXTEEN (16) HOLES ADDED TO HOLES DIMENSIONS & DIMENSIONING CHGD.	7/22/55	A	WJC	WJC	WJC
D	1	"C" HOLE ADDED	6/15/54	3	WJC	WJC	WJC
C	1	3/16 R ADDED	6/15/54	2	WJC	WJC	WJC
B	1	"B" HOLE WAS "B"	6/15/54	1	WJC	WJC	WJC
A	1	#47 DRILL WAS #50	6/15/54	1	WJC	WJC	WJC

ALL OTHERS	DEC. DIM. ± .005 FRAC. DIM. ± 1/64 ANGULAR DIM. ±	SCALE: DRILL PUNCH, COMMERCIAL STOCK SIZES AND MANUFACTURERS TOLERANCES ARE NOT INCLUDED.
------------	---	---

REF. DWG. LD-216-2

REQ. PER UNIT	1	MODEL	GPR (R)	PROJECT NO.	297	ASSY. NO.		DATE	A-11-55																																								
<table border="1"> <tr> <td>REQ. ITEM</td> <td>PART NO.</td> <td>DESCRIPTION</td> <td>SYMBOL</td> </tr> <tr> <td></td> <td>3/16 THK.</td> <td>THE TECHNICAL MATERIEL CORP. MAMARONECK, NEW YORK</td> <td></td> </tr> <tr> <td></td> <td>ALUMINUM</td> <td>FRONT PANEL, RACK</td> <td></td> </tr> <tr> <td></td> <td>MATERIAL WEIGHT PER PC.</td> <td>GPR (R)</td> <td></td> </tr> <tr> <td></td> <td>TYPE &amp; TEMPER</td> <td>ODD. 4-1155</td> <td>HH</td> </tr> <tr> <td></td> <td></td> <td>DRAWN</td> <td>ELEC. DES. APP. MECH. DES. APP.</td> </tr> <tr> <td></td> <td></td> <td>CHECKED</td> <td>FINAL APPROVAL</td> </tr> <tr> <td></td> <td></td> <td>HEAT TREAT. SPEC.</td> <td></td> </tr> <tr> <td></td> <td></td> <td>SEE NOTE</td> <td></td> </tr> <tr> <td></td> <td></td> <td>FINISH &amp; SPEC. NO.</td> <td>MS-641 H</td> </tr> </table>										REQ. ITEM	PART NO.	DESCRIPTION	SYMBOL		3/16 THK.	THE TECHNICAL MATERIEL CORP. MAMARONECK, NEW YORK			ALUMINUM	FRONT PANEL, RACK			MATERIAL WEIGHT PER PC.	GPR (R)			TYPE & TEMPER	ODD. 4-1155	HH			DRAWN	ELEC. DES. APP. MECH. DES. APP.			CHECKED	FINAL APPROVAL			HEAT TREAT. SPEC.				SEE NOTE				FINISH & SPEC. NO.	MS-641 H
REQ. ITEM	PART NO.	DESCRIPTION	SYMBOL																																														
	3/16 THK.	THE TECHNICAL MATERIEL CORP. MAMARONECK, NEW YORK																																															
	ALUMINUM	FRONT PANEL, RACK																																															
	MATERIAL WEIGHT PER PC.	GPR (R)																																															
	TYPE & TEMPER	ODD. 4-1155	HH																																														
		DRAWN	ELEC. DES. APP. MECH. DES. APP.																																														
		CHECKED	FINAL APPROVAL																																														
		HEAT TREAT. SPEC.																																															
		SEE NOTE																																															
		FINISH & SPEC. NO.	MS-641 H																																														

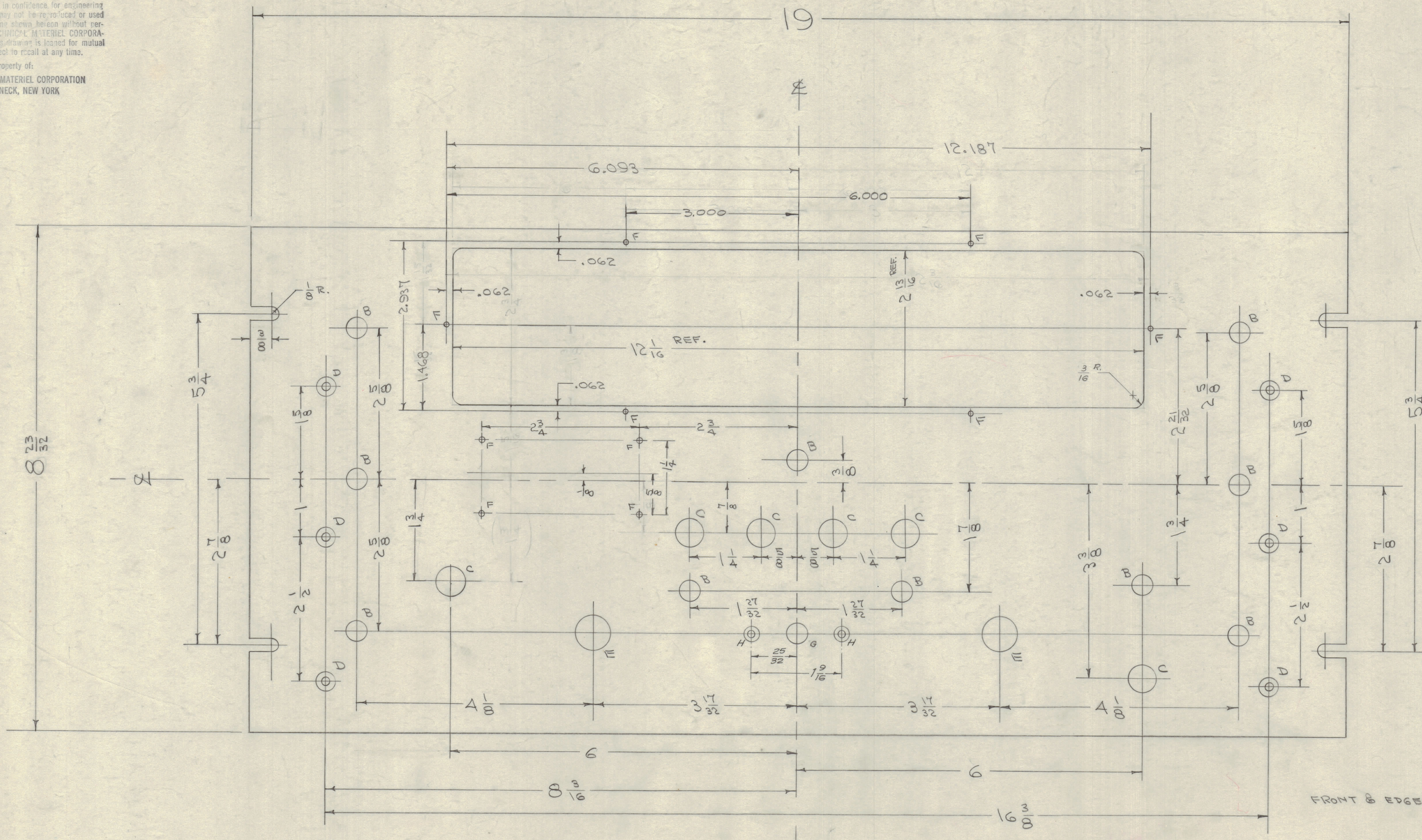
MS-641 H

IF IT IS FOUND DESIRABLE TO CHANGE ANY TOLERANCE OR OTHER DETAIL SPECIFIED ON THIS DRAWING NOTIFY THE PURCHASER PROMPTLY.  
 MAXIMUM ALLOWABLE TOLERANCES HAVE BEEN DETERMINED AND DEVIATIONS WILL BE CAUSE FOR REJECTION. REMOVE ALL BURRS AND SHARP EDGES

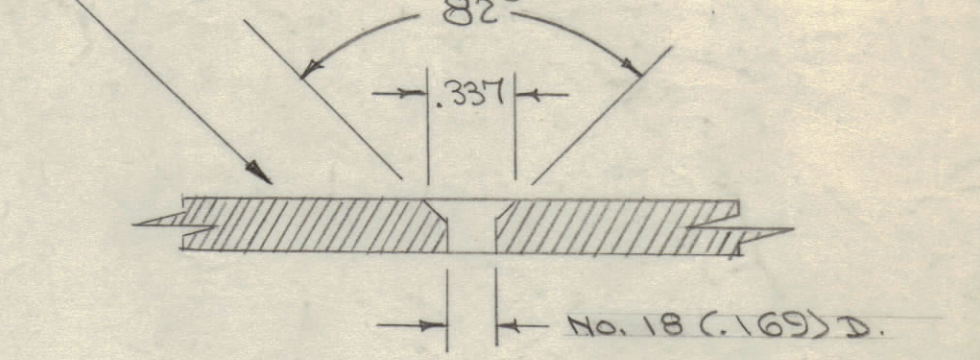
**NOTICE TO PERSONS RECEIVING THIS DRAWING**

THE TECHNICAL MATERIEL CORPORATION claims proprietary right in the material disclosed hereon. This drawing is issued in confidence for engineering information only and may not be reproduced or used to manufacture anything shown hereon without permission from THE TECHNICAL MATERIEL CORPORATION to the user. This drawing is loaned for mutual assistance and is subject to recall at any time.

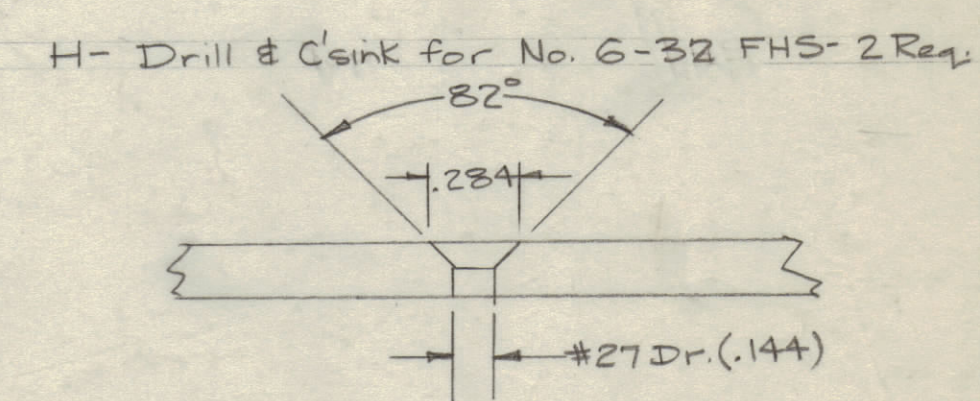
Property of:  
 THE TECHNICAL MATERIEL CORPORATION  
 MAMARONECK, NEW YORK



B - 25/64 (.390) D. 10 HOLES REQ.  
 C - 3/16 (.1875) D. 6 " "  
 D - SEE DETAIL 6 " "



E - 5/8 (.625) D. 2 HOLES REQ.  
 F - No. 47 (.078) D. 10 " "  
 G - 1/32 (.031) D. 1 " "



H - Drill & Sink for No. 6-32 FHS - 2 Req.

NOTE: FINISH  
 S-404 IRIDITE  
 S-114 ZINC CHROMATE PRIMER  
 S-115 SMOOTH GRAY ENAMEL  
 OR - PRIME & PAINT TO CUSTOMERS SPECIFICATION.

FRONT & EDGES ONLY

FRONT OF PANEL

REF. DWG. LD-216-2

ISSUE	ITEM	CHANGED FROM	DATE	CN. NO.	DRAFTS	CHECKER	ENG. APP.
H	1	S-404 IRIDITE WAS	12/1	58	1001	A6	EMK
G	1	S-101 CAUSTIC DIP	12/1	58	1001	A6	EMK
F	1	TWO 1/4" HOLES ADDED TO ACCOM. NEW LOCATION OF DETENT/1/8 WAS 1/32	12/1	58	7	16	JMB
E	1	2 1/32 WAS 2 1/16	12/1	58	7	16	JMB
D	1	DIMENSIONS OF DIMENSIONS CHGD.	12/1	58	7	16	JMB
C	1	1/8" HOLE ADDED	12/1	58	7	16	JMB
B	2	3/16 R ADDED	12/1	58	7	16	JMB
A	1	1/8" HOLE WAS 1/16	12/1	58	7	16	JMB

TOLERANCES	SCALE
DEC. DIM. ± .005 FRAC. DIM. ± 1/64 ANGULAR DIM. ±	DRILL PUNCH, COMMERCIAL STOCK SIZES AND MANUFACTURERS TOLERANCES ARE NOT INCLUDED.

1	GPR (R)	297	A-11-55
REQ. PER UNIT	MODEL	PROJECT NO.	DATE
		ASSY. NO.	USED ON

REQ. ITEM	PART NO.	DESCRIPTION	SYMBOL
	3/16 THK.	THE TECHNICAL MATERIEL CORP. MAMARONECK, NEW YORK	
	STOCK SIZE		
	ALUMINUM - #	FRONT PANEL, RACK	
	MATERIAL	GPR (R)	
	2AS T3		
	TYPE & TEMPER		
	#		
	HEAT TREAT. SPEC.		
	SEE NOTE		
	FINISH & SPEC. NO.		

MS-6A1 H