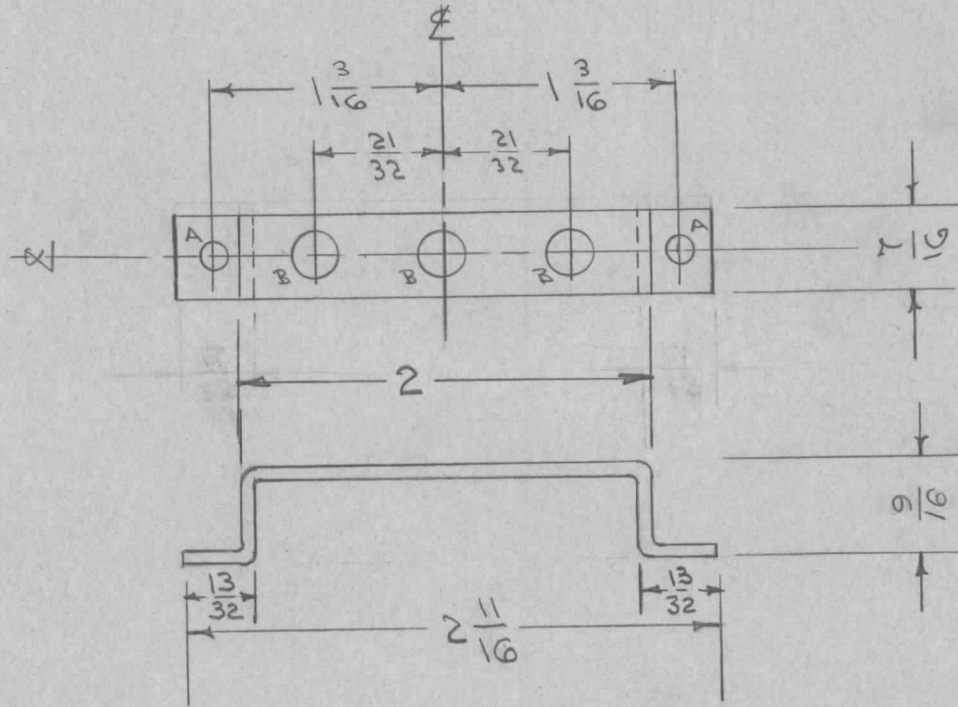


IF IT IS FOUND DESIRABLE TO CHANGE ANY TOLERANCE OR OTHER DETAIL SPECIFIED ON THIS DRAWING NOTIFY THE PURCHASER PROMPTLY.

MS-635 \emptyset

MAXIMUM ALLOWABLE TOLERANCES HAVE BEEN DETERMINED AND DEVIATIONS WILL BE CAUSE FOR REJECTION. REMOVE ALL BURRS AND SHARP EDGES

REQ. PER UNIT	USED ON			
	MODEL	PROJECT NO.	ASS'Y. NO.	DATE
2	GPR	297		4-1-55



A - 5/32 (.156) D. 2 REQ.
 B - 17/64 (.265) D. 3 " "

BLANK SIZE
 3 7/16 X 7/16

ISSUE	ITEM	CHANGED FROM	DATE	CN. NO.	DRAFTS	CHECKER	ENG. APP.	REQ.	ITEM	PART NO.	DESCRIPTION	SYMBOL
D	1	5404- IRIDITE WAS 5131 - CAUSTIC DIP	12-7 59	1001	P		EMN			.064	THE TECHNICAL MATERIEL CORP.	
C	1	'B' HOLE WAS Y4 (250)	11/11/55	3	PB	ESS	WE			STOCK SIZE	MAMARONECK. NEW YORK	
B	1	9/16 WAS 1/2	9-8-55	2	PB	ESS	WE			ALUMINUM -H-	BRACKET, OSC. TRIMMER	
A	1	13/32 WAS 7/16	4/7/55	1	ESS	HH	G.T.O			MATERIAL WEIGHT PER PC.	GPR	
										52S H32	CDD-4-1-55	HH
										TYPE & TEMPER	DRAWN	ELEC. DES. APP.
										H	G.T.O	MECH. DES. APP.
										HEAT TREAT. SPEC.	CHECKED	FINAL APPROVAL
										S404- IRIDITE		MS-635 \emptyset
										FINISH & SPEC. NO.		

ISSUE	ITEM	CHANGED FROM	DATE	CN. NO.	DRAFTS	CHECKER	ENG. APP.
D	1	5404- IRIDITE WAS 5131 - CAUSTIC DIP	12-7 59	1001	P		EMN
C	1	'B' HOLE WAS Y4 (250)	11/11/55	3	PB	ESS	WE
B	1	9/16 WAS 1/2	9-8-55	2	PB	ESS	WE
A	1	13/32 WAS 7/16	4/7/55	1	ESS	HH	G.T.O

TOLERANCES

SCALE

DRILL, PUNCH, COMMERCIAL STOCK SIZES AND MANUFACTURERS TOLERANCES ARE NOT INCLUDED.

ALL OTHERS
 DEC. DIM. \pm
 FRAC. DIM. \pm 1/64
 ANGULAR DIM. \pm