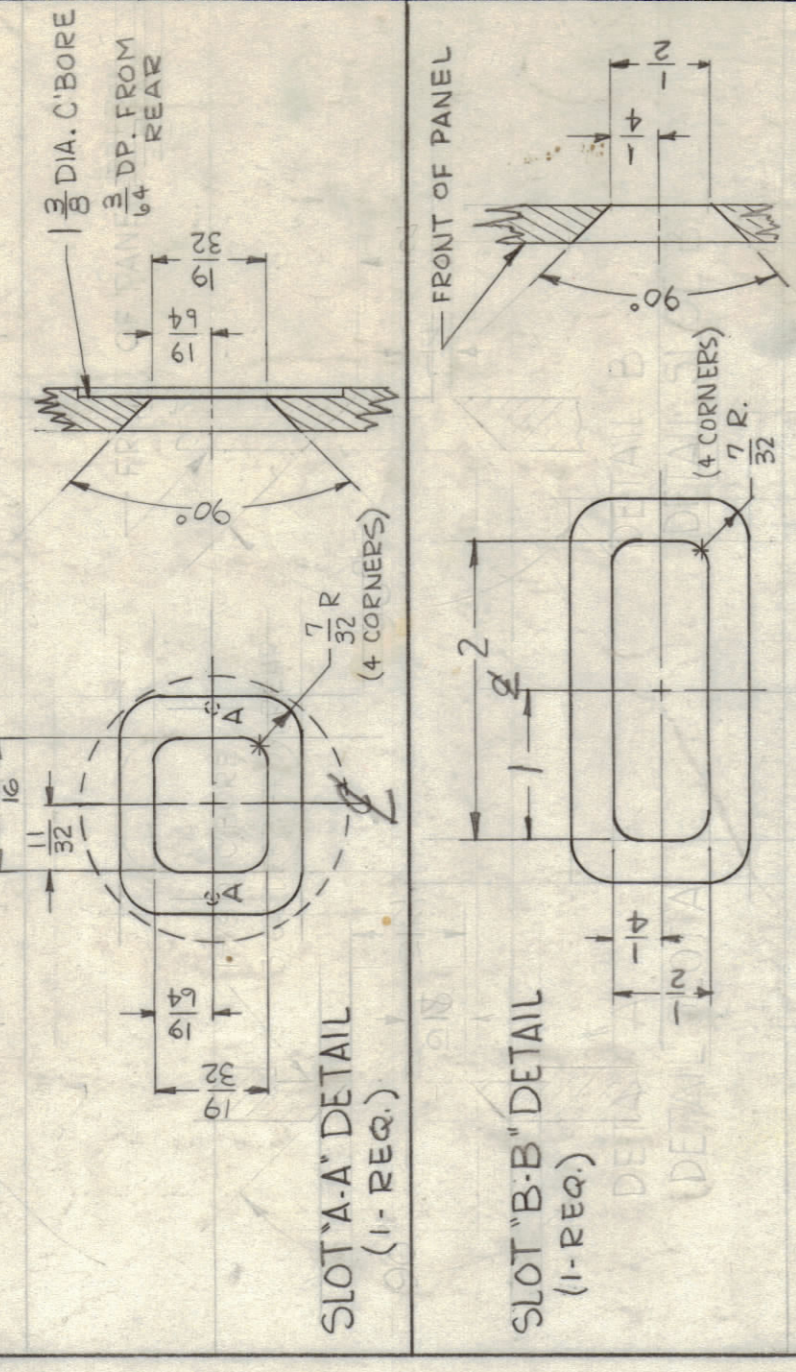
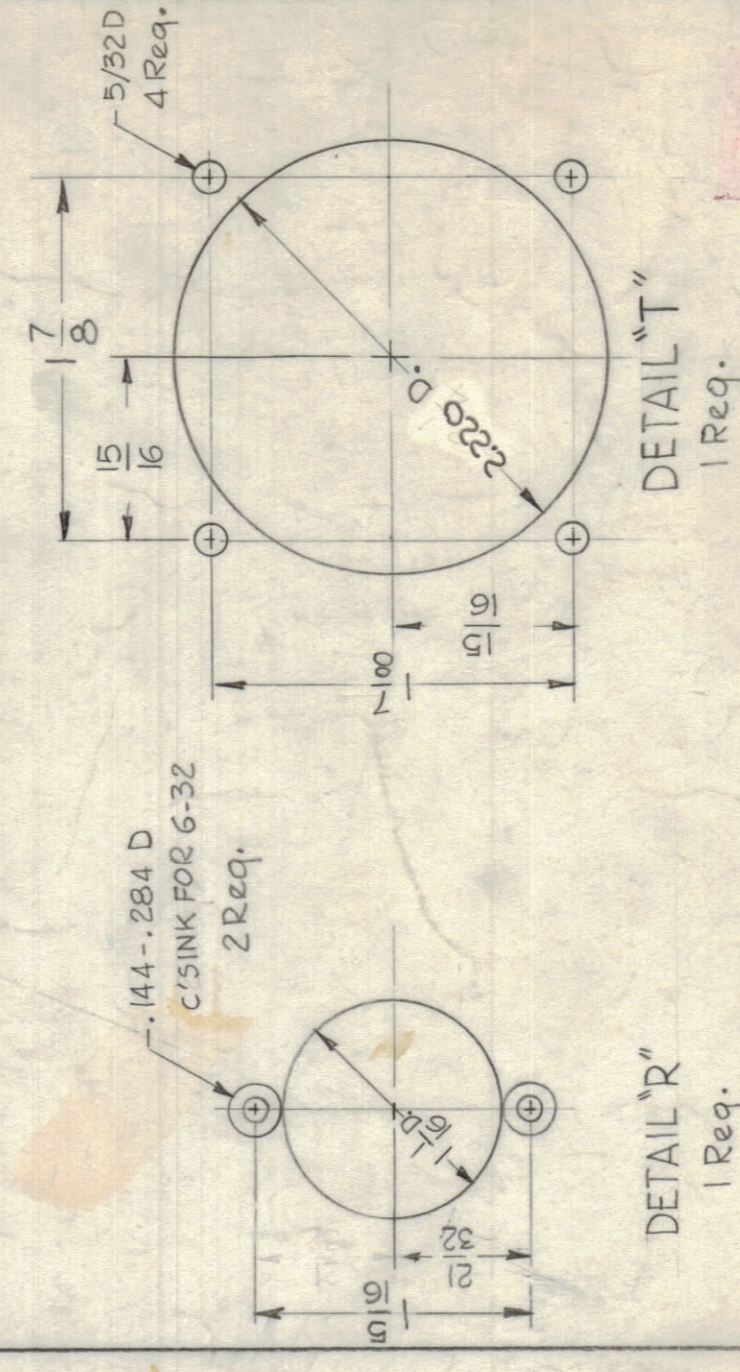
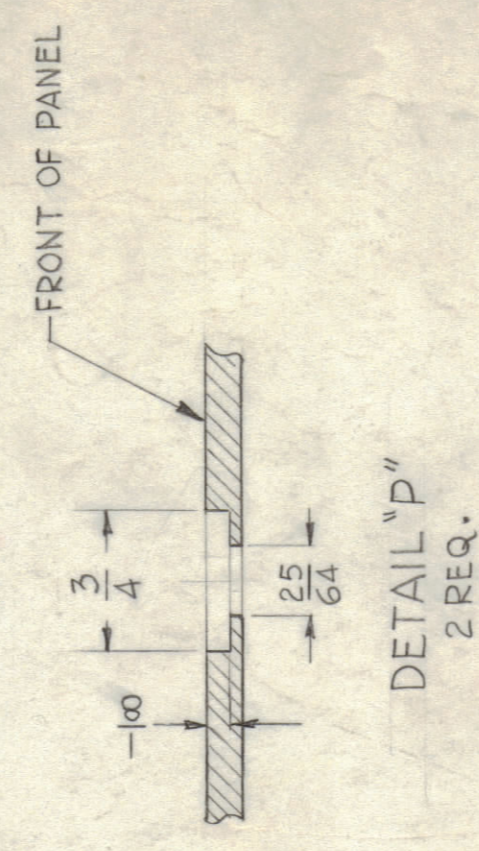


MS-602 L

HOLE	DIMENSION	REQ.
A	.052 ± .004	2
B	7/16 DIA. ± .004	1
C	7/32 DIA.	6
D	6.4 MM. (2515) DIA.	1
E	25/64 DIA.	4
F	DRILL TAP 4-40	1
G	45/64 DIA.	4
N	1-1/16 DIA.	1



HOLE	DIMENSION	REQ.
H	1/8 (.125) DIA.	5
K	1/4 (.125) DIA.	7
M	3/8 (.375) DIA.	8



REV.	ITEM	DATE	DESCRIPTION	BY	CHKD.	APPROV.
1			THE TECHNICAL MATERIEL CORP. MAMARONECK, NEW YORK			
2			FRONT, PANEL			
3			ALUMINUM			
4			24 ST3			
5			TYPE & TEMPER			
6			SEE NOTE			
7			FINISH & SPEC. NO.			

REQ.	ITEM	DATE	DESCRIPTION	BY	CHKD.	APPROV.
1			3/16 THK			
2			ALUMINUM			
3			24 ST3			
4			TYPE & TEMPER			
5			SEE NOTE			
6			FINISH & SPEC. NO.			

NOTE - FINISH (FRONT OF PANEL SHOWN)

5-404 - IRIDITE  
5-114 ZINC CHROMATE PRIMER  
5-115 SMOOTH GREY ENAMEL  
OR PRIME & PAINT TO CUSTOMERS SPECIFICATION

FRONT AND EDGES ONLY

DATE	CH. NO.	REVISED	BY	CHKD.	APPROV.
2-14-62	0322				
7-27-63	0518				
2-10-63	0262				
7-27-63	0518				
5-10-65	1342				

SCALE: DO NOT SCALE

MAXIMUM ALLOWABLE TOLERANCES HAVE BEEN INDICATED TO PREVENT DIMENSIONS FROM BEING CAUSED BY MANUFACTURING VARIATIONS. REMOVE ALL BURRS & SHARP EDGES.

UNLESS OTHERWISE SPECIFIED:  
DIMENSIONS ARE IN INCHES  
TOLERANCES ± .005  
DECIMALS ± .005  
ANGLES ± 12'