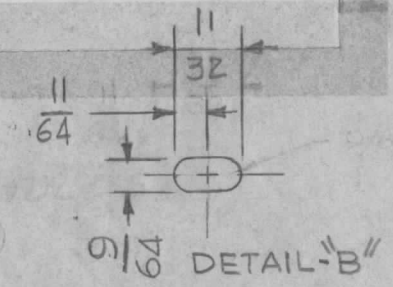


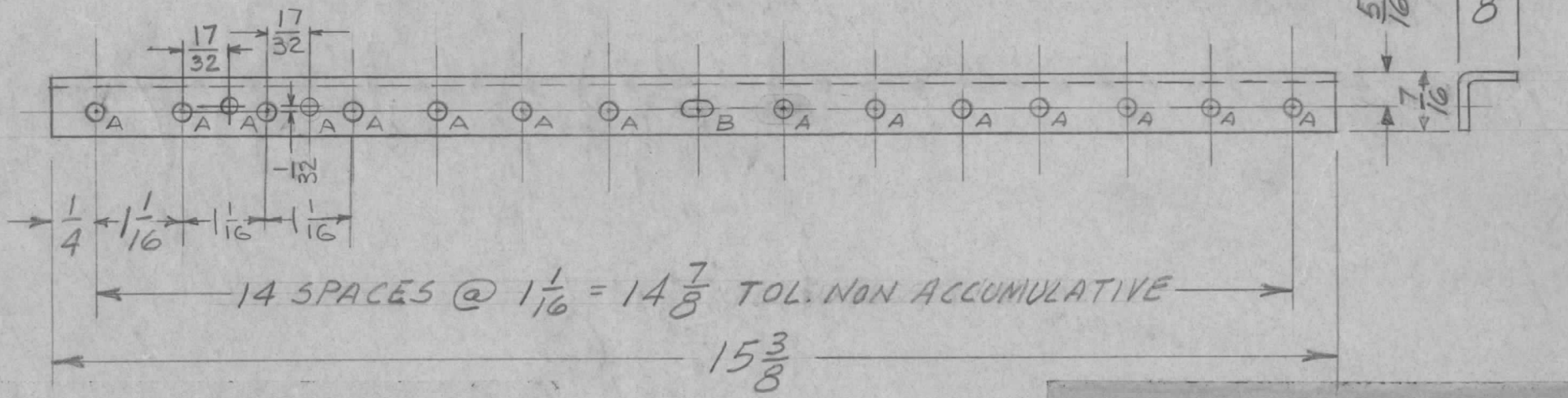
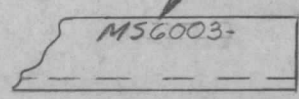
HOLE	DESCRIPTION	REQ
A	9/64 DIA.	16
B	SEE DETAIL	1

REA PER UNIT	USED ON		
	MODEL	ASS'Y. NO.	DATE
	VOX-7	BMA-114	PH 114
	MMX-()	BMA-105	PH 105

MSG003 B



MARK TMC P/N
1/8 HIGH GOTHIC W/LATEST
REV. LETTER



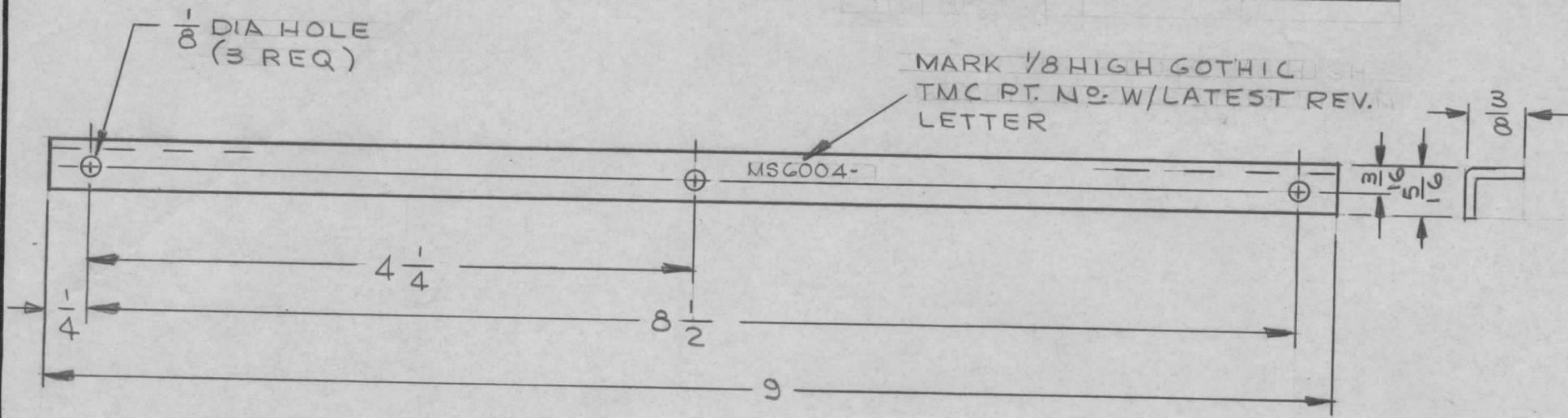
UNLESS OTHERWISE SPECIFIED:

1. USE MATERIAL THICKNESS FOR MAXIMUM RADIUS ON ALL BENDS
2. ALL ANGULAR BENDS 90 DEGREES
3. REMOVE ALL BURRS AND SHARP EDGES

C	'A' HOLE QTY WAS 15	12-19-77	21610	APP	KP	KP	
B	'A' HOLE ADDED	12-11-67	18664	APP	OP	OP	
A	MODEL HFSR-4 DELETED MOD. MMX-() WAS MMX-1	10/24/67	CC	APP	OP	OP	
Ø	ORIG. RELEASE FOR PROD.	6-26-67	RG				
X2	QTY. REQ FOR EACH MODEL WAS 2	5-1-67	GDL				
X1	B HOLE WAS 9/64 DIA	1-19-67	GDL				
X	EXP. RELEASE	11/3/66	JL				
ISSUE	ITEM	CHANGED FROM	DATE	CH. NO.	DRAFTS	CHECKER	ENG. APP.
TOLERANCES			SCALE: DO NOT SCALE				
DEC. DIM. ±	S401-451		MAXIMUM ALLOWABLE TOLERANCES HAVE BEEN DETERMINED AND ANY DEVIATIONS WILL BE CAUSE FOR REJECTION.				
FRAC. DIM. ±			REMOVE ALL BURRS AND SHARP EDGES				
ULAR DIM. ±							

REQ.	ITEM	PART NO.	O. POSE	DESCRIPTION	SYMBOL
		.063 THICK		SK324611	
		STOCK SIZE		THE TECHNICAL MATERIEL CORP. MAMARONECK, NEW YORK	
		ALUMINUM		ANGLE, STIFFENER	
		MATERIAL			
		5052-H32	G.D.L.		
		TYPE & TEMPER		DRAWN	CHECKED
		HEAT TREAT. SPEC.			FINAL APPROVAL
		5404 YEL. IRIDITE			
		FINISH & SPEC. NO.		ELEC. DES. APP.	MECH. DES. APP.
					MSG003 B

REQ. PER UNIT	USED ON			MS6004	B
	MODEL	ASS'Y. NO.	DATE		
14	VOX-7				
13	MMX-()				



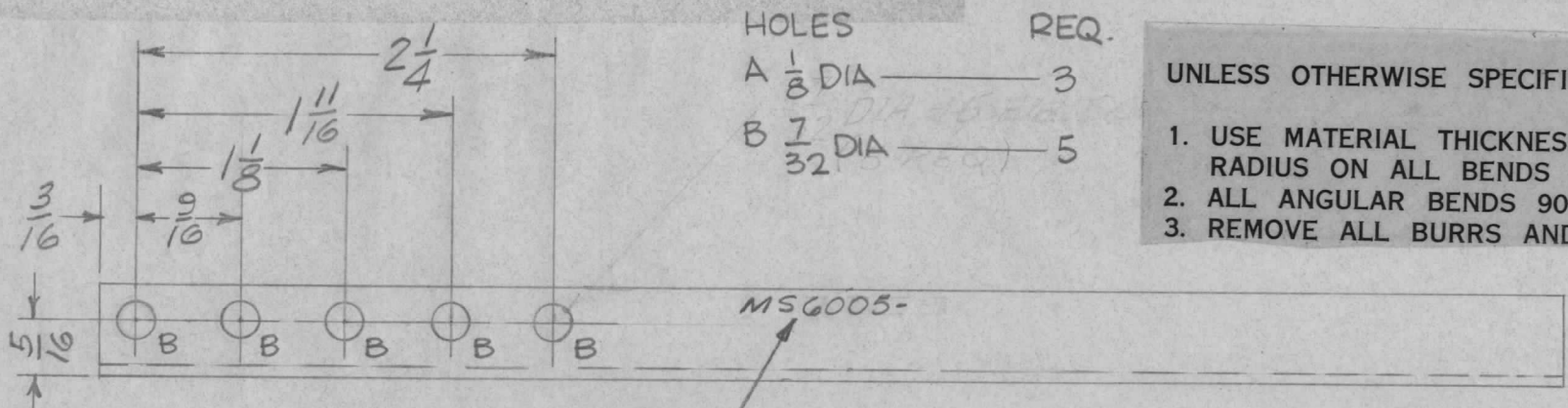
UNLESS OTHERWISE SPECIFIED:

1. USE MATERIAL THICKNESS FOR MAXIMUM RADIUS ON ALL BENDS
2. ALL ANGULAR BENDS 90 DEGREES
3. REMOVE ALL BURRS AND SHARP EDGES

REF: LD3094

B	REF: LD3094 Added	11.11.77	21593	KP	<i>[Signature]</i>	*	REQ. ITEM	PART NO.	O. POSE	DESCRIPTION	SK3213MS49	SYMBOL
A	MOD. HFSR-4 DELETED MOD. MMX-() WAS MMX-1	10/24/67	CC	<i>[Signature]</i>	<i>[Signature]</i>	<i>[Signature]</i>	.063 THK		THE TECHNICAL MATERIEL CORP. MAMARONECK, NEW YORK			
Ø	ORIG. RELEASE FOR PROD.	6.26.67	<i>[Signature]</i>	RG	<i>[Signature]</i>	<i>[Signature]</i>	STOCK SIZE		STIFFENER, P.C. BOARD			
X	EXP RELEASE	11/3/66		JL	<i>[Signature]</i>	<i>[Signature]</i>	ALUMINUM					
SYM	DESCRIPTION	DATE	CH. NO.	DRAFTS	CHECKER	ENG. APP.	MATERIAL					
UNLESS OTHERWISE SPECIFIED DIMENSIONS ARE IN INCHES AND INCLUDE CHEMICALLY APPLIED OR PLATED FINISHES		SCALE		NONE			5052-H32		JL	<i>[Signature]</i>	<i>[Signature]</i>	<i>[Signature]</i>
DECIMALS .X ± .05 .XX ± .01 .XXX ± .005	TOLERANCES	FRACTIONS ± 1/64 ANGLES ± 0° 30'	CODE A	S401-451			TYPE & TEMPER S404 YEL. IRIDITE		HEAT TREAT. SPEC.	DRAWN	CHECKED	FINAL APPROVAL
							FINISH & SPEC. NO.		ELEC. DES. APP.	MECH. DES. APP.	MS6004	B

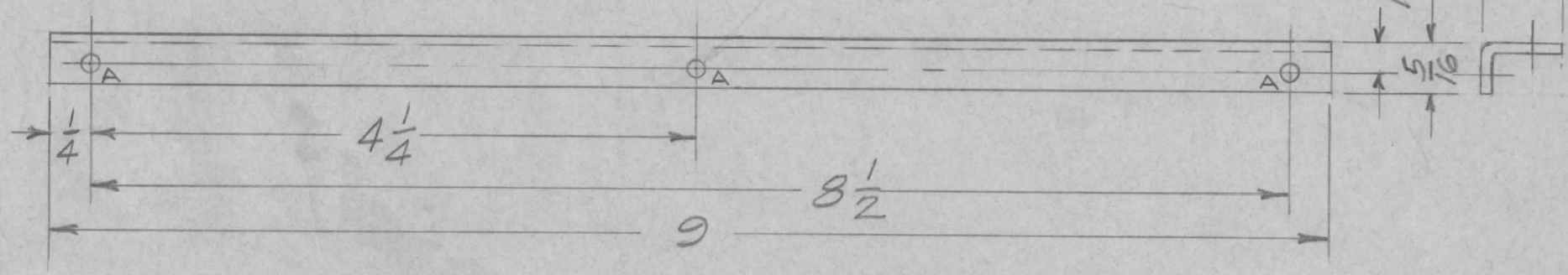
REQ. PER UNIT	USED ON			MS6005 Ø
	MODEL	ASS'Y. NO.	DATE	
1	MMX-1	A4525		



HOLES
 A $\frac{1}{8}$ DIA — 3
 B $\frac{7}{32}$ DIA — 5

- UNLESS OTHERWISE SPECIFIED:
1. USE MATERIAL THICKNESS FOR MAXIMUM RADIUS ON ALL BENDS
 2. ALL ANGULAR BENDS 90 DEGREES
 3. REMOVE ALL BURRS AND SHARP EDGES

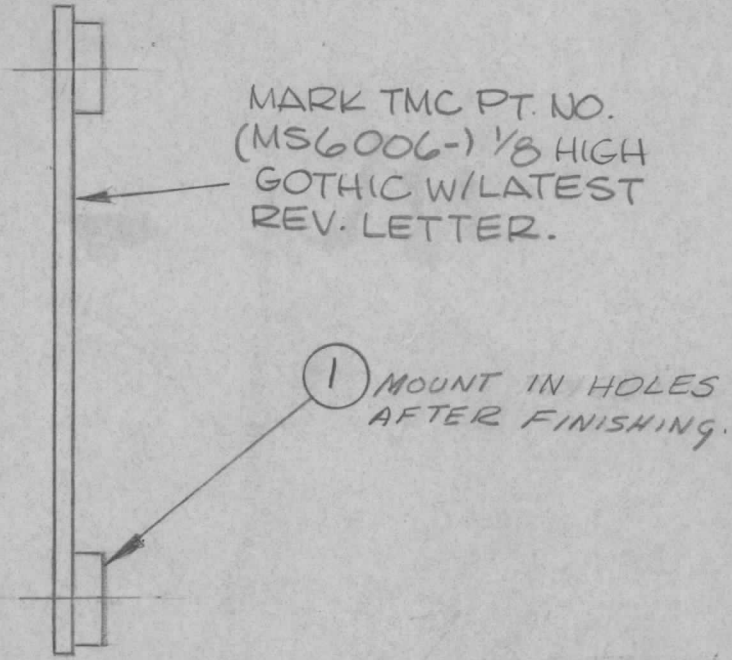
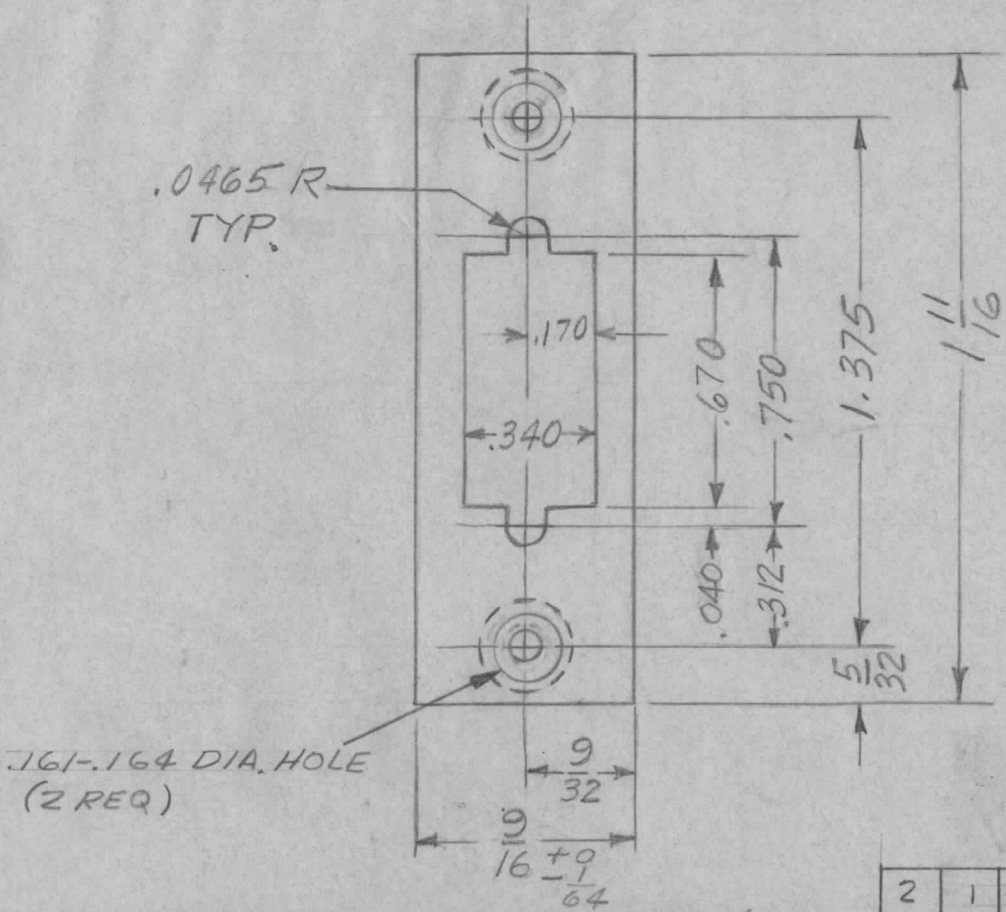
MARK $\frac{1}{8}$ HIGH GOTHIC
 TMC PT. NO. w/LATEST
 REV. LETTER



REF: LD3095

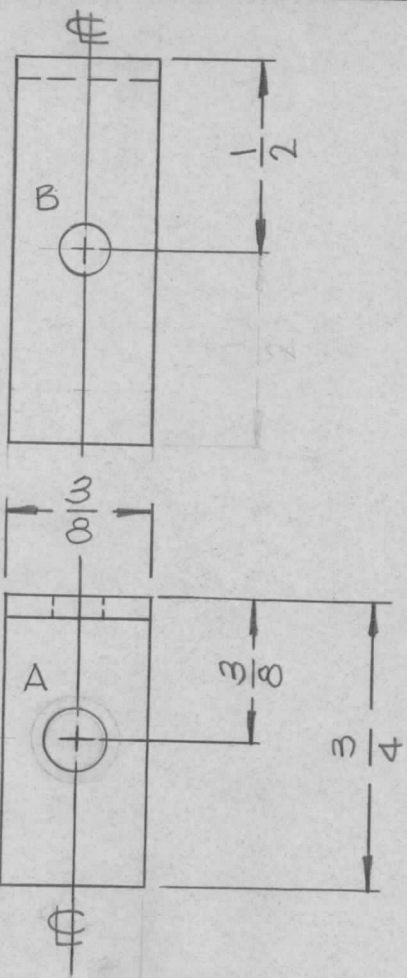
								REQ. ITEM	PART NO.	O. POSE	DESCRIPTION	SK3246-13	SYMBOL
A	REF: LD3095 Added	11-11-77	21594	KP	<i>[Signature]</i>	*			.063 TK.		THE TECHNICAL MATERIEL CORP. MAMARONECK, NEW YORK		
Ø	ORIG. RELEASE FOR PROD	6-26-67	Ø	RG	<i>[Signature]</i>				STOCK SIZE		STIFFENER, PC BOARD (SPECIAL)		
X	EXP. RELEASE	11/3/66		JL	<i>[Signature]</i>				ALUMINUM				
ISSUE	ITEM	CHANGED FROM	DATE	CH. NO.	DRAFTS	CHECKER	ENG. APP.	MATERIAL					
TOLERANCES			SCALE: 5401-451				5052-H32		G.I.D.L.	<i>[Signature]</i>	<i>[Signature]</i>	FINAL APPROVAL	
DEC. DIM. ± FRAC. DIM. ± ANGULAR DIM. ±			MAXIMUM ALLOWABLE TOLERANCES HAVE BEEN DETERMINED AND ANY DEVIATIONS WILL BE CAUSE FOR REJECTION. REMOVE ALL BURRS AND SHARP EDGES				TYPE & TEMPER 5404 YEL. IRIDITE		HEAT TREAT. SPEC.	DRAWN	CHECKED	MECH. DES. APP.	
							FINISH & SPEC. NO.		ELEC. DES. APP.	MECH. DES. APP.	MS6005		A

REQ. PER UNIT	USED ON			MS6006 A
	MODEL	ASS'Y. NO.	DATE	
1	VOX-7	AX 651		
1	MMX-()	AX 652		



A	MOD HFSR-4 DELETED MOD MMX-() WAS MMX-1	10/29/67	CC	Enf	My	op	
Ø	ORIG RELEASE FOR PROD	6/26/67	e	RG			
XI	DIM .040 WAS .050 DIM .670 WAS .650	12-1-66	HA	Jc	Jc	BAC	
X	EXP. RELEASE	11/3/66		JL			
ISSUE	ITEM	CHANGED FROM	DATE	CH. NO.	DRAFTS	CHECKER	ENG. APP.
TOLERANCES			SCALE: 5401-451				
DEC. DIM. ± FRAC. DIM. ± ANGULAR DIM. ±			MAXIMUM ALLOWABLE TOLERANCES HAVE BEEN DETERMINED AND ANY DEVIATIONS WILL BE CAUSE FOR REJECTION. REMOVE ALL BURRS AND SHARP EDGES				

2	1	NT129-440-3	NUT, PLAIN, SPLINE	
REQ. ITEM	PART NO.		O. POSE	DESCRIPTION SK3213MS37
.051 THK			THE TECHNICAL MATERIEL CORP. MAMARONECK, NEW YORK	
STOCK SIZE			PLATE, CONNECTOR MTG.	
ALUMINUM				
MATERIAL				
5052-H32		G. D. L.	My	Jc
TYPE & TEMPER		HEAT TREAT. SPEC.	DRAWN	CHECKED
5404 YEL. IRIDITE				
FINISH & SPEC. NO.		ELEC. DES. APP.	MECH. DES. APP.	MS6006 A



REQ. PER UNIT	USED ON			MS6021	Ø
	MODEL	ASS'Y. NO.	DATE		
1	RFA-1B		10.20.66		

HOLE	DESCRIPTION	REQ
A	.161-.164 DIA	1
B	1/8 DIA	1

- UNLESS OTHERWISE SPECIFIED:
1. USE MATERIAL THICKNESS FOR MAXIMUM RADIUS ON ALL BENDS
 2. ALL ANGULAR BENDS 90 DEGREES
 3. REMOVE ALL BURRS AND SHARP EDGES
 4. MOUNT INSERTS AFTER FINISHING

MOUNT IN "A" HOLE AS SHOWN

				1	1	NT129-440-4	NUT, PLAIN, SPLINE, TYPE	A		
				REQ. ITEM	PART NO.		DESCRIPTION	SYMBOL		
						.064	THE TECHNICAL MATERIEL CORP.			
						STOCK SIZE	MAMARONECK, NEW YORK			
						ALUMINUM	BRACKET, R.F. COVER			
						MATERIAL				
						5052-H32	WHO	AD 10/21/66		
						TYPE & TEMPER	HEAT TREAT. SPEC.	DRAWN	CHECKED	FINAL APPROVAL
						S404 YEL IRIDITE				
						FINISH & SPEC. NO.	ELEC. DES. APP.	MECH. DES. APP.	MS6021	Ø

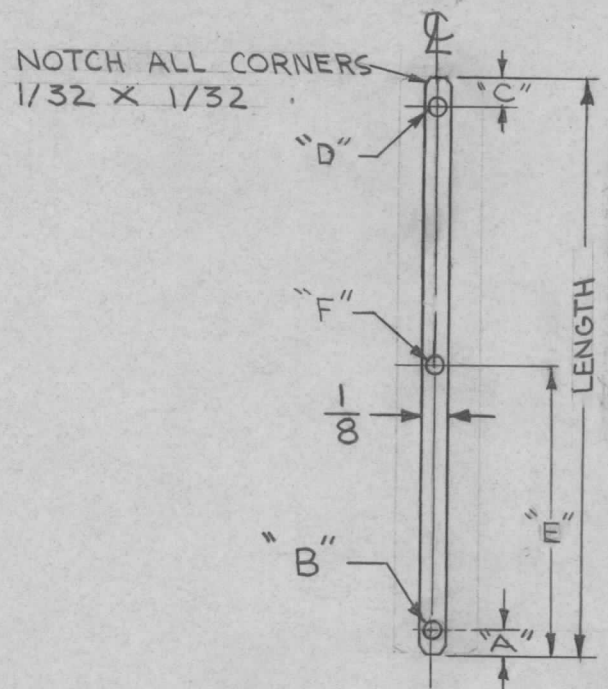
Ø ORIGINAL RELEASE 10/21/66

UNLESS OTHERWISE SPECIFIED DIMENSIONS ARE IN INCHES AND INCLUDE CHEMICALLY APPLIED OR PLATED FINISHES

DECIMALS .X ± .05 .XX ± .01 .XXX ± .005 FRACTIONS ± 1/64 ANGLES ± 0° 30'

SCALE 2/1

TMC NO.	A	B	C	D	E	F	MAT'L THK.	REQ. PER UNIT	USED ON			MS6022	Q
	DIM.(INCH)	DIA.	DIM.(INCH)	DIA.	DIM.(INCH)	DIA.			MODEL	ASS'Y. NO.	DATE		
MS6022-1	1/8	5/64	—	NH	—	NH	.020		PAL-350		10/24/66		



TMC PART NO. WILL BE IN THE FOLLOWING FORM:

MS6022 - 1 - 3.000

BASIC DWG. NO.

DRILLING PLAN CODE

LENGTH (INCHES)

NOTE:

NH = NO HOLE

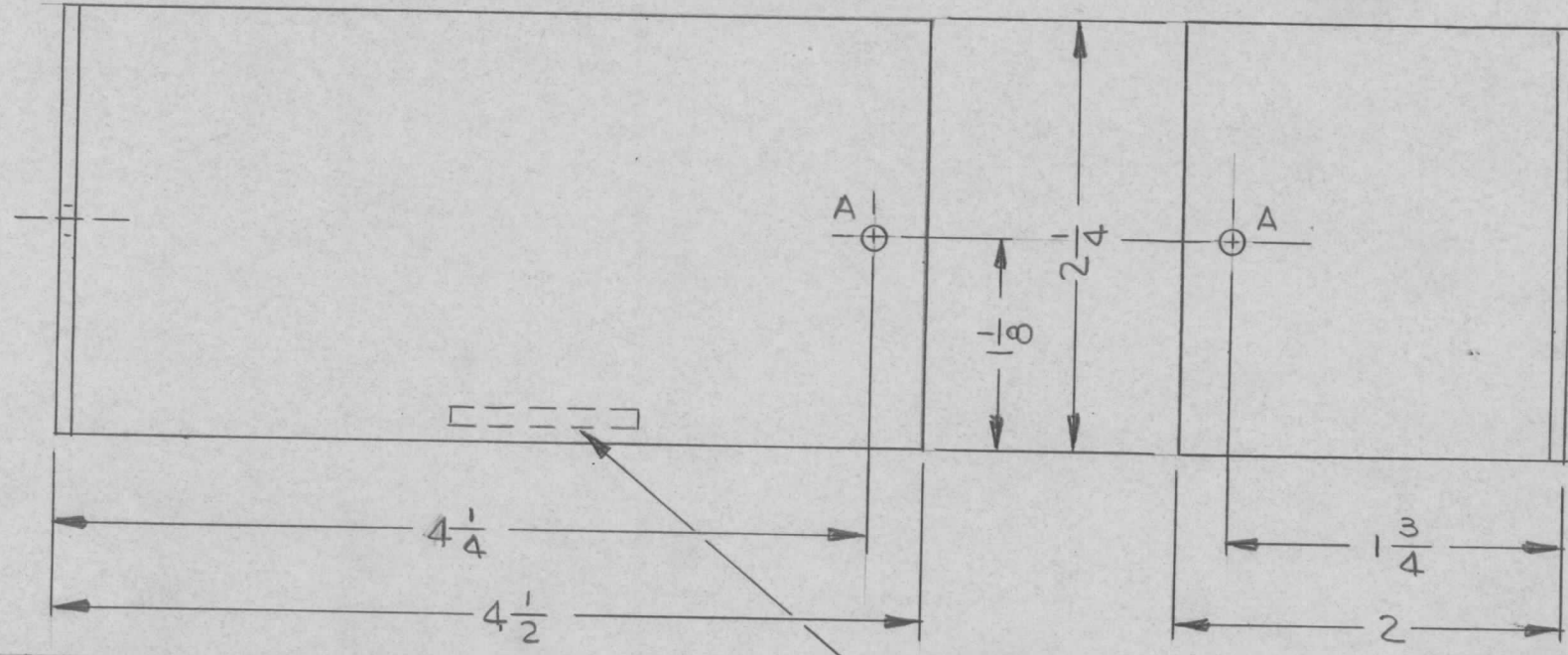
SEE APPROPRIATE ML FOR REQUIRED LENGTH

								REQ. ITEM	PART NO.	DESCRIPTION	SYMBOL
Q	ORIGINAL RELEASE FOR PRODUCTION	12/24/66	4	WTD				SEE CHART		THE TECHNICAL MATERIEL CORP. MAMARONECK, NEW YORK	
X	EXPERIMENTAL RELEASE	10/24/66	X	RME				STOCK SIZE		LEAD, CONNECTING, 1/8 WIDE	
								COPPER			
								MATERIAL			
								OFHC - SOFT		RME	Jale
								TYPE & TEMPER	HEAT TREAT. SPEC.	DRAWN	CHECKED
								5245 SILVER PLATE .0003		5.8.2.2	5.8.2.2
								FINISH & SPEC. NO.	ELEC. DES. APP.	MECH. DES. APP.	
											MS6022 Q

HOLE	HOLE LEGEND	REQ
A	DESCRIPTION	
A	9/64 DIA	2

REQ. PER UNIT	USED ON		
	MODEL	ASS'Y. NO.	DATE
1	GPR-92A		6/9/66
1	GPR-92B		11/1/66

MS6025 \emptyset



- UNLESS OTHERWISE SPECIFIED:
1. USE MATERIAL THICKNESS FOR MAXIMUM RADIUS ON ALL BENDS
 2. ALL ANGULAR BENDS 90 DEGREES
 3. REMOVE ALL BURRS AND SHARP EDGES

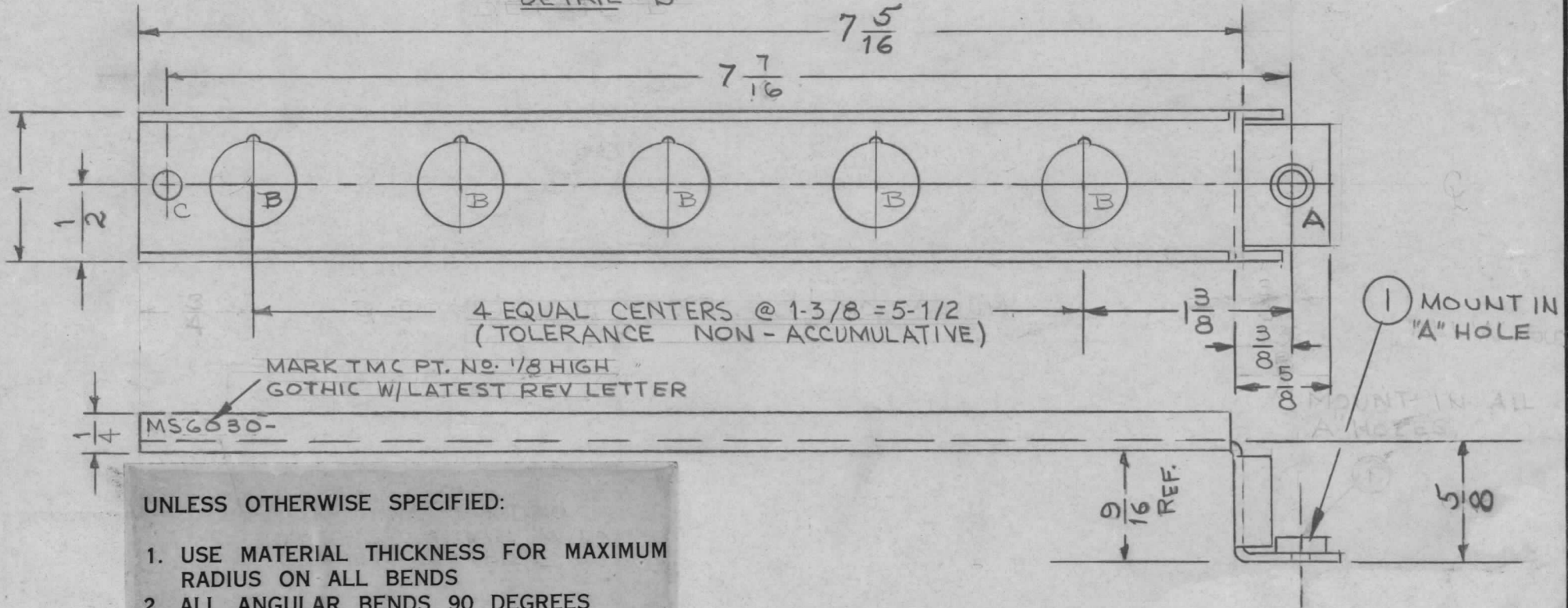
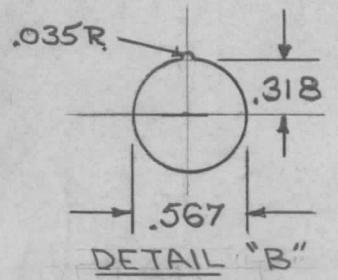
MARK TMC PT NO. 1/8 HIGH GOTHIC W/LATEST REV. LETTER

REQ. ITEM	PART NO.	DESCRIPTION	SK2300-14	SYMBOL
\emptyset	ORIGINAL RELEASE FOR PRODUCTION	11/1/66	\emptyset RME	<i>JL</i>
X	EXP RELEASE	11/1/66	JL	
SYM	DESCRIPTION	DATE	CH. NO.	DRAFTS
	UNLESS OTHERWISE SPECIFIED DIMENSIONS ARE IN INCHES AND INCLUDE CHEMICALLY APPLIED OR PLATED FINISHES	SCALE	1/1	
	DECIMALS .X \pm .05 .XX \pm .01 .XXX \pm .005	FRACTIONS \pm 1/64 ANGLES \pm 0° 30'	CODE	
	TOLERANCES			
	5052-H32	JL	<i>JL</i>	<i>11/1/66</i>
	TYPE & TEMPER	HEAT TREAT. SPEC.	DRAWN	CHECKED
	YEL IRIDITE S404			FINAL APPROVAL
	FINISH & SPEC. NO.	ELEC. DES. APP.	MECH. DES. APP.	MS6025 \emptyset

HOLE LEGEND		
HOLE	DESCRIPTION	REQ. D
A	.191-.194 DIA	1
B	SEE DETAIL	5
C	11/64 DIA.	1

REQ. PER UNIT	USED ON		
	MODEL	ASS'Y. NO.	DATE
2	KMCI-1		11-15-66

MS6030 ϕ

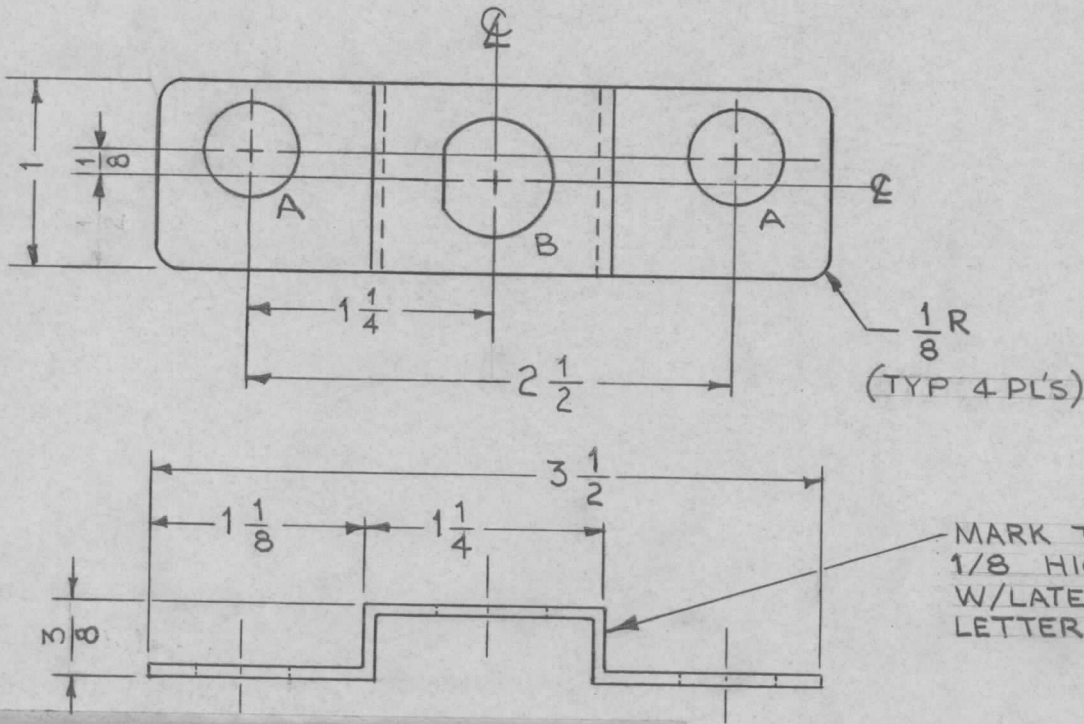


- UNLESS OTHERWISE SPECIFIED:**
1. USE MATERIAL THICKNESS FOR MAXIMUM RADIUS ON ALL BENDS
 2. ALL ANGULAR BENDS 90 DEGREES
 3. REMOVE ALL BURRS AND SHARP EDGES
 4. MOUNT INSERTS AFTER FINISHING

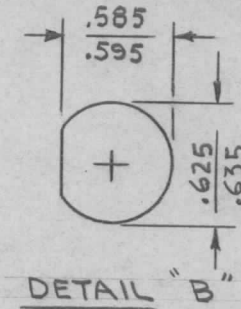
1	1	NT129-632-4	NUT PLAIN, SPLINE	A
REQ. ITEM	PART NO.		DESCRIPTION REF. SK3254-3	SYMBOL
.063 THK.			THE TECHNICAL MATERIEL CORP.	
STOCK SIZE			MAMARONECK, NEW YORK	
ALUMINUM			BUTTON, SUPPORT, BRACKET	
MATERIAL				
5052-H32		RME	 	
TYPE & TEMPER	HEAT TREAT. SPEC.	DRAWN	CHECKED	FINAL APPROVAL
S404-YEL. IRIDITE			BR	MS6030 ϕ
FINISH & SPEC. NO.		ELEC. DES. APP.	MECH. DES. APP.	

ϕ	ORIGINAL RELEASE FOR PRODUCTION	12-19-66	ϕ	RME		
X	EXP. RELEASE	11-15-66	X	RME		
SYM	DESCRIPTION	DATE	CH. NO.	DRAFTS	CHECKER	ENG. APP.
UNLESS OTHERWISE SPECIFIED DIMENSIONS ARE IN INCHES AND INCLUDE CHEMICALLY APPLIED OR PLATED FINISHES		SCALE 1:1				
DECIMALS	FRACTIONS	CODE				
.X ± .05	± 1/64					
.XX ± .01	ANGLES					
.XXX ± .005	± 0° 30'					

REQ. PER UNIT	USED ON			MS6031
	MODEL	ASS'Y. NO.	DATE	
1	KMCI		11-14-66	



HOLE LEGEND		
HOLE	DESCRIPTION	REQ.
A	1/2 DIA.	2
B	SEE DETAIL	1



MARK TMC PART NO.
1/8 HIGH GOTHIC
W/LATEST REVISION
LETTER.

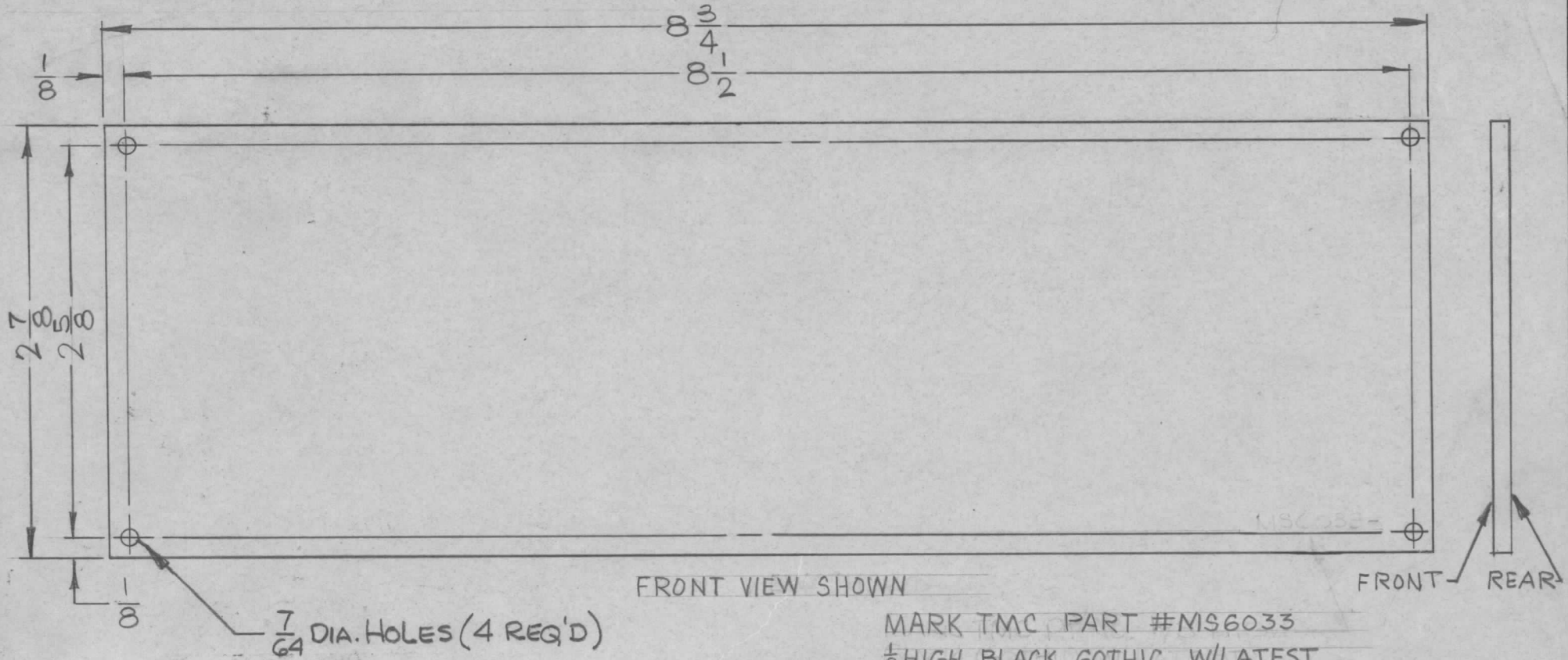
UNLESS OTHERWISE SPECIFIED:

1. USE MATERIAL THICKNESS FOR MAXIMUM RADIUS ON ALL BENDS
2. ALL ANGULAR BENDS 90 DEGREES
3. REMOVE ALL BURRS AND SHARP EDGES

SYM	DESCRIPTION	DATE	CH. NO.	DRAFTS	CHECKER	ENG. APP.	REQ. ITEM	PART NO.	L. BUTLER	DESCRIPTION	SYMBOL
Ø	ORIGINAL RELEASE FOR PRODUCTION	12-19-66	Ø	RME			.064 THK.		THE TECHNICAL MATERIEL CORP. MAMARONECK, NEW YORK		
X	EXP. RELEASE	11-14-66	X	RME			STOCK SIZE		BRACKET, MTG, FUSE		
							ALUMINUM				
							MATERIAL				
							5052-H32		RME		
							TYPE & TEMPER	HEAT TREAT. SPEC.	DRAWN	CHECKED	FINAL APPROVAL
							5404 YEL. IRIDITE				MS6031
							FINISH & SPEC. NO.		ELEC. DES. APP.	MECH. DES. APP.	

NOTE - 1. PRIOR TO FINISHING, REMOVE SURFACE IMPERFECTIONS USING A FINE ABRASIVE.
 2- CAUSTIC ETCH.
 3- ANODIZE PER MIL-A-8625, TYPE II, SULPHURIC ACID.

REQ. PER UNIT	USED ON			MSG033	A
	MODEL	ASS'Y. NO.	DATE		
1	RTPH-()		11-28-66		



FRONT VIEW SHOWN

$\frac{7}{64}$ DIA. HOLES (4 REQ'D)

MARK TMC PART #MS6033
 $\frac{1}{8}$ HIGH BLACK GOTHIC W/LATEST
 REV. LETTER ON REAR OF PLATE.

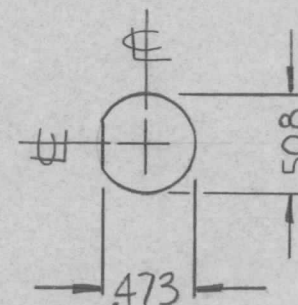
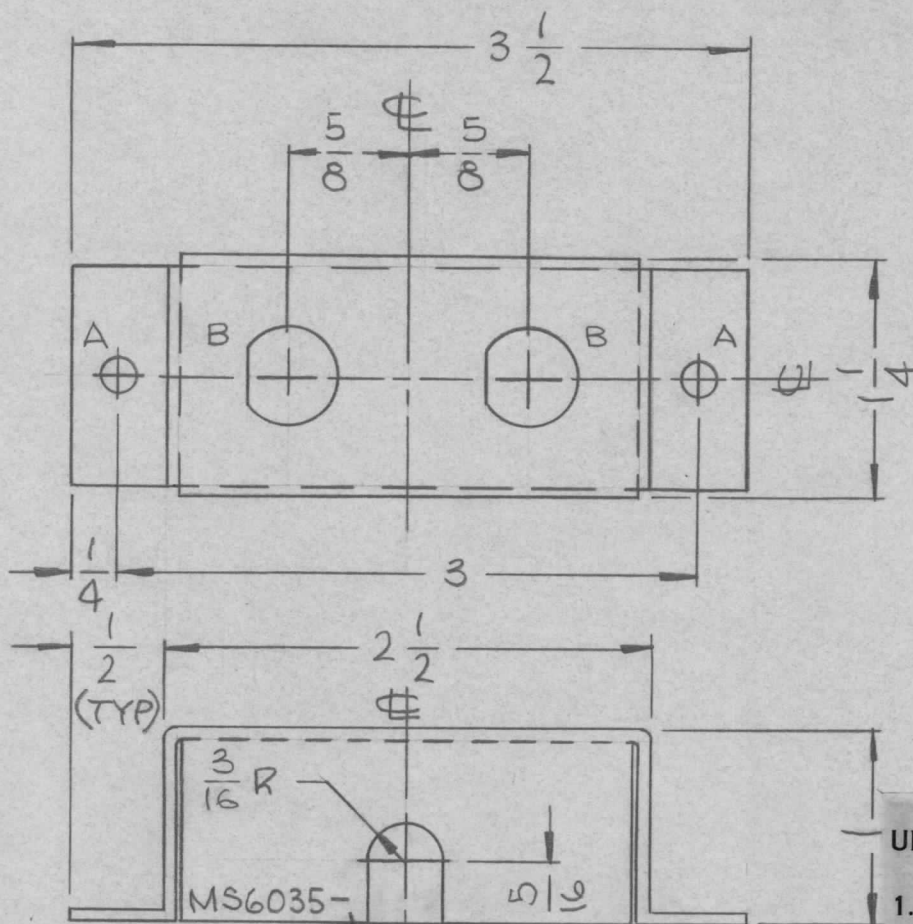
REF: LD 2189, LD 2351

A	REF DATA ADDED	5/19/69	19429	GE	HQ	SDM	REQ. ITEM	PART NO.	F. EATON	DESCRIPTION	SYMBOL		
Ø	ORIG. RELEASE	12-4-67			SG	HQ	.031		THE TECHNICAL MATERIEL CORP. MAMARONECK, NEW YORK				
X ₁	TMC P/N WAS ON FRONT	11-6-67				B/B	STOCK SIZE		PLATE, PUSHBUTTON				
X	EXPERIMENTAL RELEASE	11-28-66			HGA		ALUMINUM		CHART				
SYM	DESCRIPTION	DATE	CH. NO.	DRAFTS	CHECKER	ENG. APP.	MATERIAL						
UNLESS OTHERWISE SPECIFIED DIMENSIONS ARE IN INCHES AND INCLUDE CHEMICALLY APPLIED OR PLATED FINISHES		SCALE					5052-H32		H. AUSTIN	SG 11/6/67	J. Di Marco 12/3/68		
		1:1					TYPE & TEMPER		DRAWN		CHECKED	FINAL APPROVAL	
DECIMALS .X ± .05 .XX ± .01 .XXX ± .005		FRACTIONS ± 1/64 ANGLES ± 0° 30'		TOLERANCES		CODE		SEE NOTES		11/10/67		MS6033	A
								FINISH & SPEC. NO.		ELEC. DES. APP.		MECH. DES. APP.	

REQ. PER UNIT	USED ON		
	MODEL	ASS'Y. NO.	DATE
1	DDR-7J1		11-21-66
1	DDR-7L		11-21-66

MS6035 \emptyset

HOLE	DESCRIPTION	REQ
A	11/64 DIA	2
B	SEE DETAIL	2



UNLESS OTHERWISE SPECIFIED:

1. USE MATERIAL THICKNESS FOR MAXIMUM RADIUS ON ALL BENDS
2. ALL ANGULAR BENDS 90 DEGREES
3. REMOVE ALL BURRS AND SHARP EDGES

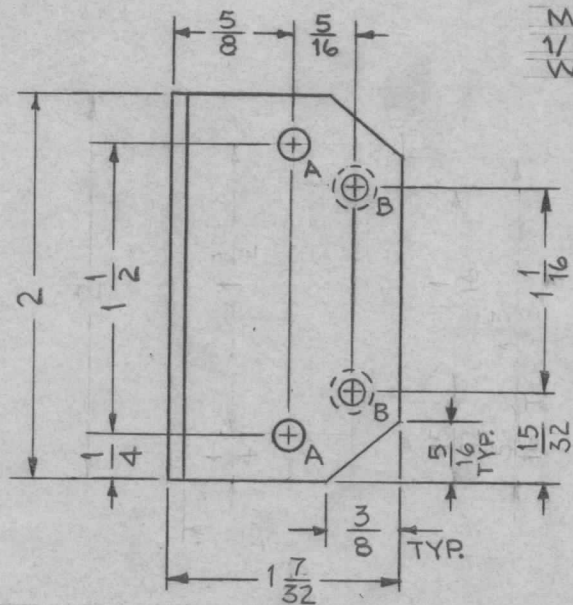
DETAIL "B"

MARK TMC PT/No
1/8 HIGH GOTHIC W/LATEST
REVISION LETTER

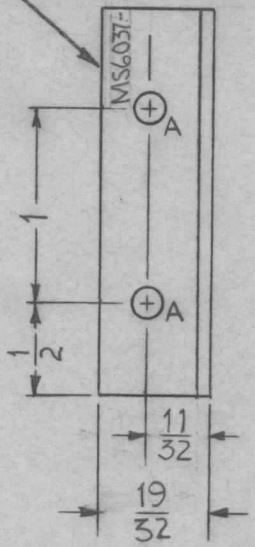
REF: LD2191

REQ. ITEM	PART NO.	DESCRIPTION	SYMBOL
	.064	THE TECHNICAL MATERIEL CORP. MAMARONECK, NEW YORK	
	STOCK SIZE		
	ALUMINUM	CHASSIS, OUTPUT	
	MATERIAL		
	5052-H32	W40	JDe
	TYPE & TEMPER	HEAT TREAT. SPEC.	DRAWN
	S404 YEL IRIDITE		CHECKED
	FINISH & SPEC. NO.	ELEC. DES. APP.	MECH. DES. APP.
			MS6035 \emptyset

REQ. PER UNIT	USED ON			MS6037	Ø
	MODEL	ASS'Y. NO.	DATE		
	SMEA-1		11.19.66		



MARK TMC PART NO.
1/8 HIGH GOTHIC
W/LATEST REVISION LETTER



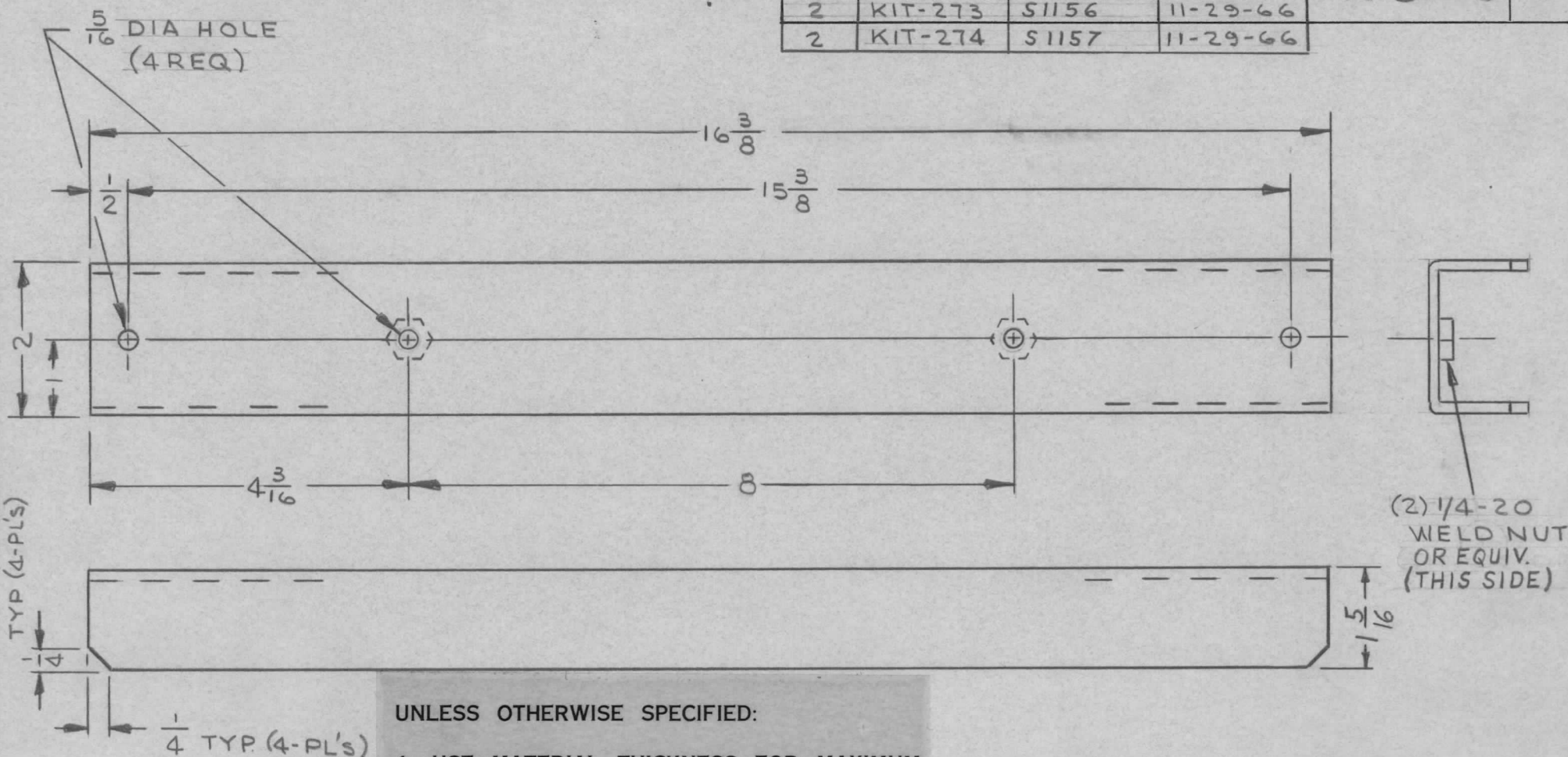
HOLE LEGEND		
HOLE	DESCRIPTION	REQ.
A	5/32 DIA.	4
B	#31 DRILL .120 D. THRU, C'SK 82° TO .230 DIA.	2

- UNLESS OTHERWISE SPECIFIED:
1. USE MATERIAL THICKNESS FOR MAXIMUM RADIUS ON ALL BENDS
 2. ALL ANGULAR BENDS 90 DEGREES
 3. REMOVE ALL BURRS AND SHARP EDGES

SYM	DESCRIPTION	DATE	CH. NO.	DRAFTS	CHECKER	ENG. APP.	REQ. ITEM	PART NO.	DESCRIPTION	SYMBOL
Ø	ORIG REL FOR PROD	7/3/67	Ø		CV		.081 THK.		THE TECHNICAL MATERIEL CORP. MAMARONECK, NEW YORK	
X	EXPERIMENTAL RELEASE	11.19.66	X		RME		ALUMINUM			BRACKET, MOUNTING,
									FILTER, RELAY	
							5052-H32		RME	Ø
							5404 YEL. IRIDITE		MS6037	Ø

REQ. PER UNIT	USED ON		
	MODEL	ASS'Y. NO.	DATE
2	KIT-273	51156	11-29-66
2	KIT-274	51157	11-29-66

MSG038 A

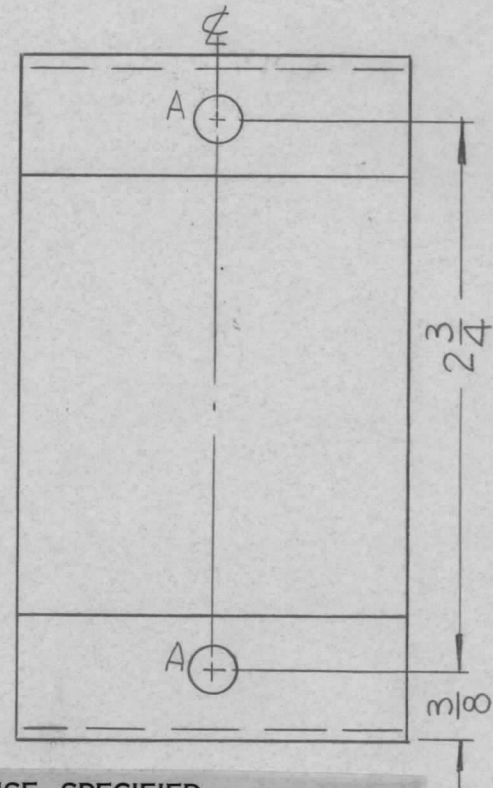
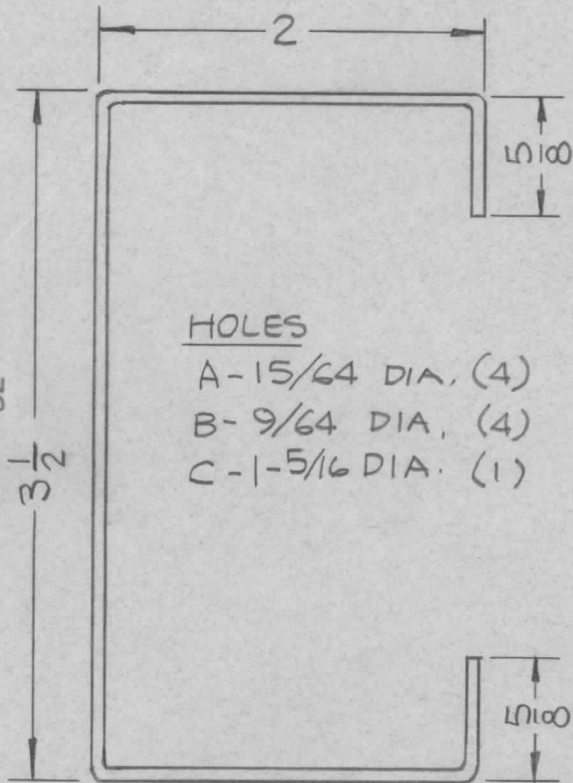
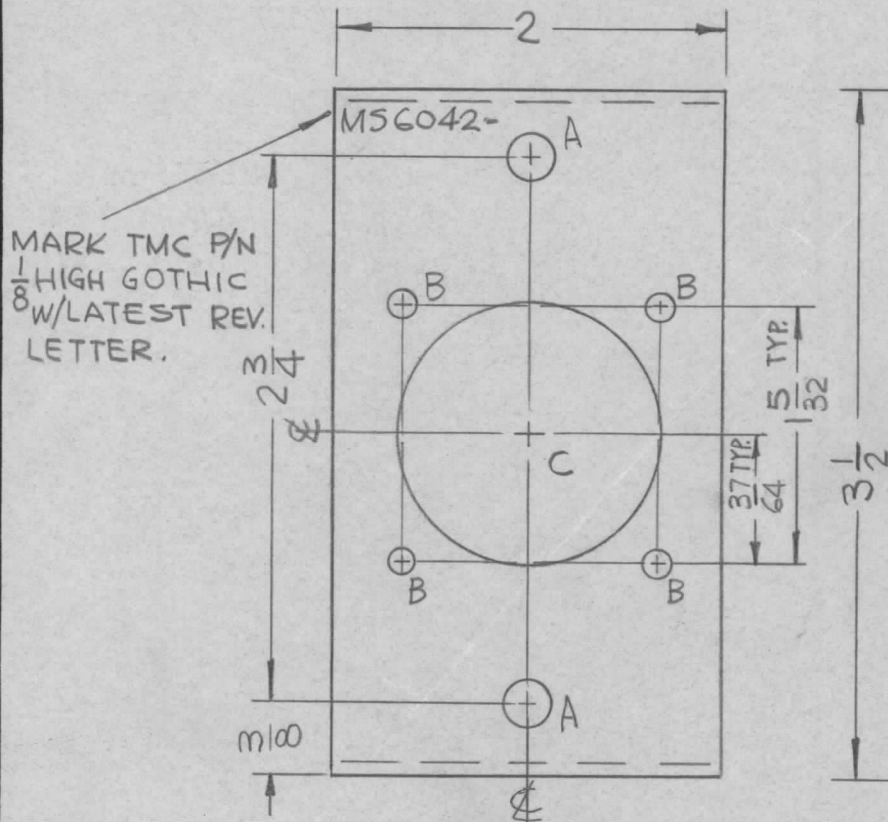


UNLESS OTHERWISE SPECIFIED:

1. USE MATERIAL THICKNESS FOR MAXIMUM RADIUS ON ALL BENDS
2. ALL ANGULAR BENDS 90 DEGREES
3. REMOVE ALL BURRS AND SHARP EDGES

REQ.	ITEM	PART NO.	DESCRIPTION				SYMBOL	
A	1 5/16 DIM. ADDED	5-3-67 18162	L.A.K.					
Ø	ORIGINAL RELEASE FOR PRODUCTION	11/1/66	Ø	CV	HDe			
X	EXP. RELEASE	11/29/66	JL					
SYM	DESCRIPTION	DATE	CH. NO.	DRAFTS	CHECKER	ENG. APP.		
UNLESS OTHERWISE SPECIFIED DIMENSIONS ARE IN INCHES AND INCLUDE CHEMICALLY APPLIED OR PLATED FINISHES		SCALE	1/2					
DECIMALS .X ± .05 .XX ± .01 .XXX ± .005		TOLERANCES		FRACTIONS ± 1/64 ANGLES ± 0° 30'		CODE		
HOT ROLLED		TYPE & TEMPER		HEAT TREAT. SPEC.		DRAWN	CHECKED	FINAL APPROVAL
COPPER FLASH PER S898		FINISH & SPEC. NO.		ELEC. DES. APP.		MECH. DES. APP.		
							MS6038 A	

REQ. PER UNIT	USED ON			MSG042 Ø
	MODEL	ASS'Y. NO.	DATE	
1	RAK 110-2G		12-2-66	



UNLESS OTHERWISE SPECIFIED:

1. USE MATERIAL THICKNESS FOR MAXIMUM RADIUS ON ALL BENDS
2. ALL ANGULAR BENDS 90 DEGREES
3. REMOVE ALL BURRS AND SHARP EDGES

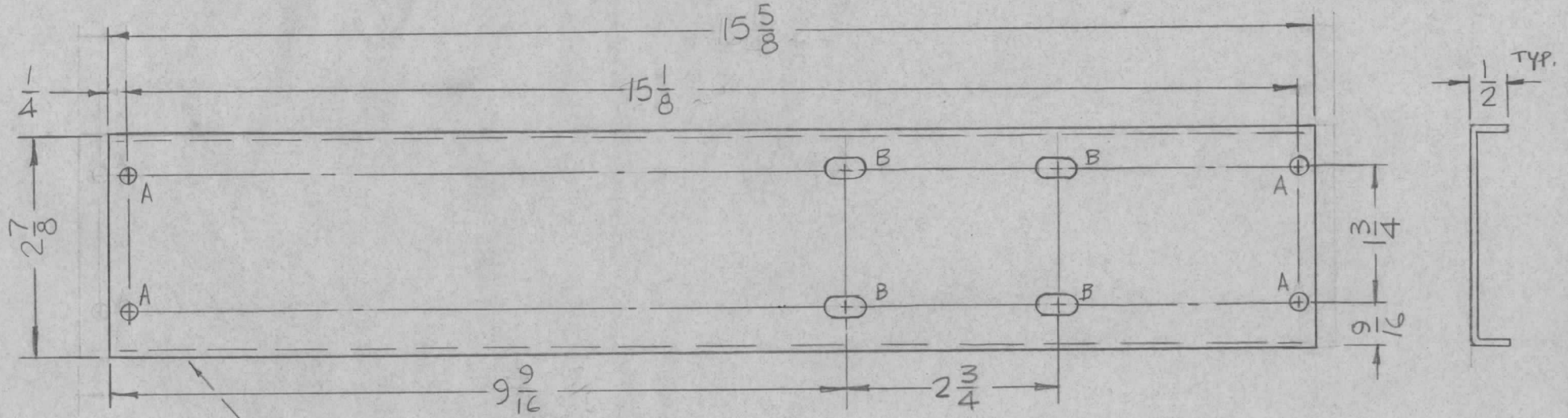
REF. LD1512

REQ. ITEM	PART NO.	F. BUDETTI	DESCRIPTION	SYMBOL						
Ø	.081 THICK		THE TECHNICAL MATERIEL CORP. MAMARONECK, NEW YORK							
X	ALUMINUM		BRACKET, MTG. CONNECTOR							
SYM	DESCRIPTION	DATE	CH. NO.	DRAFTS	CHECKER	ENG. APP.	MATERIAL	DRAWN	CHECKED	FINAL APPROVAL
	UNLESS OTHERWISE SPECIFIED DIMENSIONS ARE IN INCHES AND INCLUDE CHEMICALLY APPLIED OR PLATED FINISHES	SCALE	1:1				5052-H32			
	DECIMALS .X ± .05 .XX ± .01 .XXX ± .005	FRACTIONS ± 1/64 ANGLES ± 0° 30'	CODE A	5401-451			S404 YEL IRIDITE			
	TOLERANCES						FINISH & SPEC. NO.	ELEC. DES. APP.	MECH. DES. APP.	MSG042 Ø

REQ. PER UNIT	USED ON		MS6043 ϕ
	MODEL	ASS'Y. NO.	
1	RAK-110-2		12-3-66

HOLES

- A - 15/64 DIA. (4 REQ.)
- B - 1/4 X 1/2 SLOTS (4 REQ.)

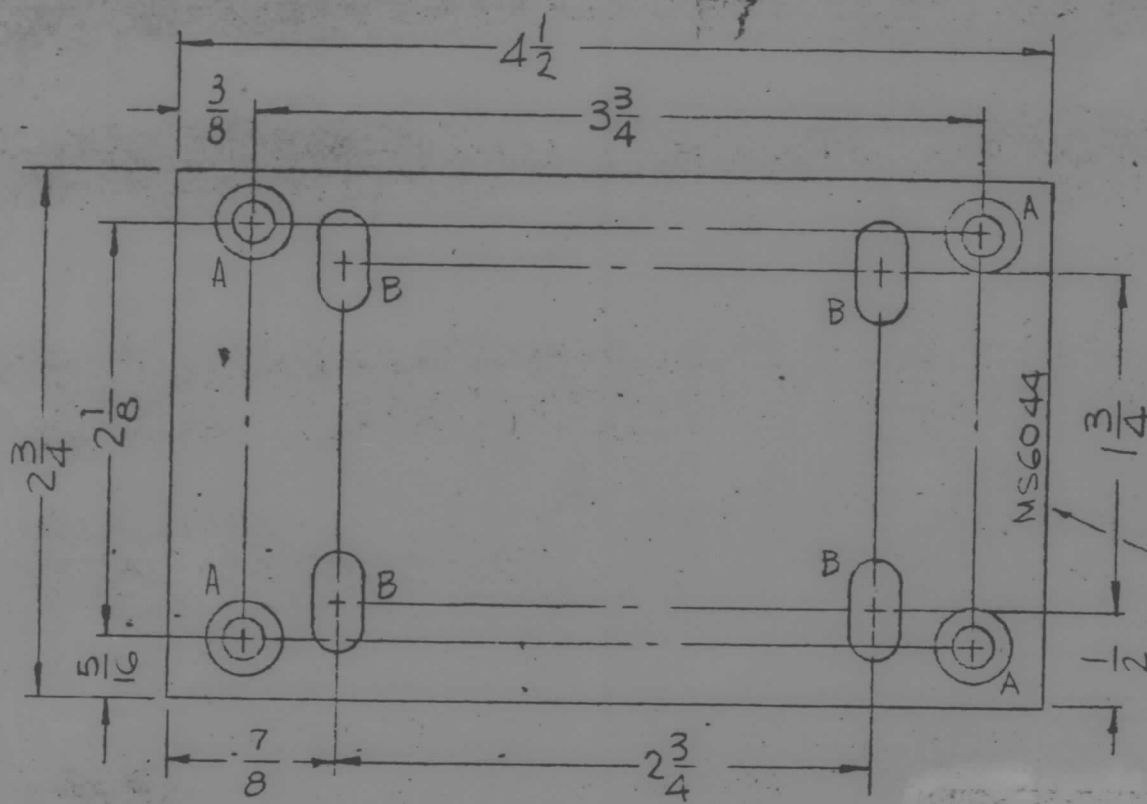


MARK TMC P/N (MS6043)
 1/8" HIGH GOTHIC W/LATEST
 REV. LETTER.

- UNLESS OTHERWISE SPECIFIED:
1. USE MATERIAL THICKNESS FOR MAXIMUM RADIUS ON ALL BENDS
 2. ALL ANGULAR BENDS 90 DEGREES
 3. REMOVE ALL BURRS AND SHARP EDGES

							REQ. ITEM	PART NO.	F. BUDETTI	DESCRIPTION	SYMBOL
								1/8 THICK		THE TECHNICAL MATERIEL CORP.	
								STOCK SIZE		MAMARONECK.	NEW YORK
ϕ	ORIGINAL RELEASE FOR PRODUCTION	3-1-67	#	4/10				ALUMINUM		PLATE, SUPPORT COUPLER	
X	EXP. RELEASE	12-3-66		1/20		09		MATERIAL			
ISSUE	ITEM	CHANGED FROM	DATE	CH. NO.	DRAFTS	CHECKER	ENG. APP.				
TOLERANCES		SCALE: 1:2		5052-H32					2/28/67		
DEC. DIM. \pm	MAXIMUM ALLOWABLE TOLERANCES HAVE BEEN DETERMINED AND ANY DEVIATIONS WILL BE CAUSE FOR REJECTION.		TYPE & TEMPER		HEAT TREAT. SPEC.	DRAWN	CHECKED	FINAL APPROVAL			
FRAC. DIM. \pm	REMOVE ALL BURRS AND SHARP EDGES		S404 YEL. IRIDITE								
ANGULAR DIM. \pm			FINISH & SPEC. NO.		ELEC. DES. APP.	MECH. DES. APP.	MS6043 ϕ				

REQ. PER UNIT 1	USED ON		
	MODEL RAK-110-2	ASS'Y. NO.	DATE 12-2-66
MSG044			



HOLES
 A - DR. 196 DIA C'SINK 82° TO .390 DIA. 4 REQ.
 B - 1/4 X 1/2 SLOT 4 REQ.

MARK TMC P/N
 1/8" HIGH GOTHIC
 W/LATEST REV.
 LETTER.

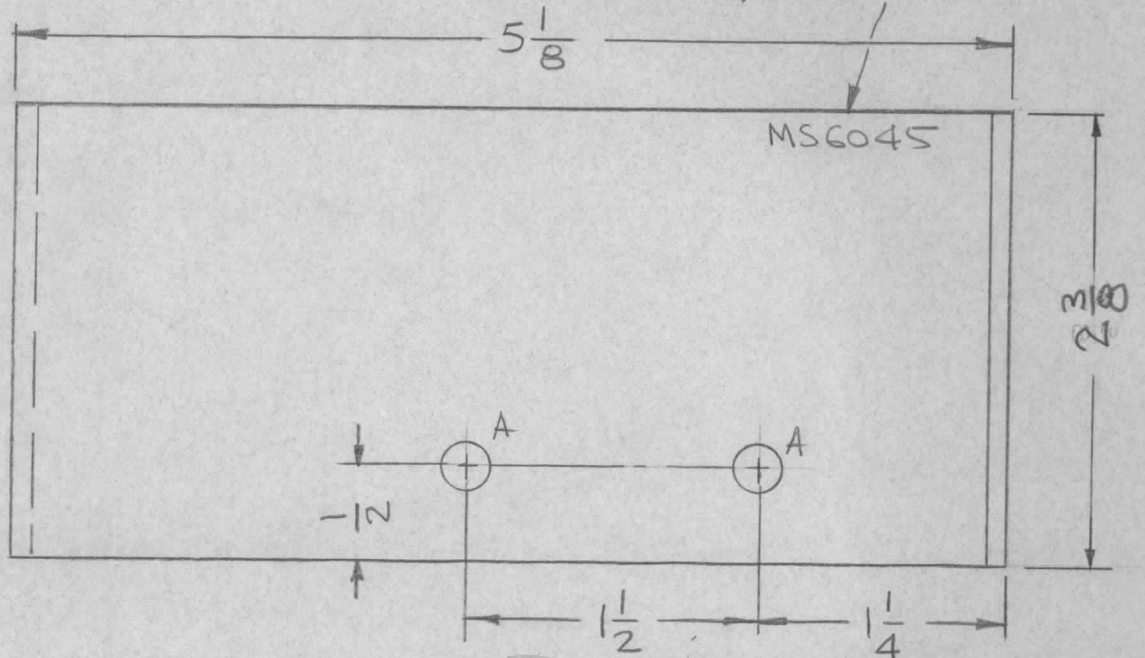
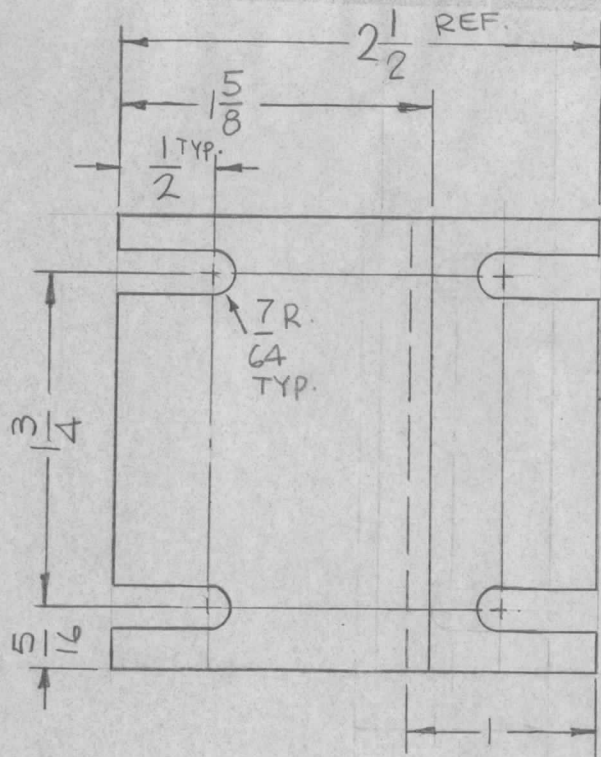
REQ. ITEM	PART NO.	F. BUDETTI		DESCRIPTION	SYMBOL		
	1/8 THICK			THE TECHNICAL MATERIEL CORP.			
	STOCK SIZE			MAMARONECK, NEW YORK			
	ALUMINUM			PLATE, SUPPORT SPACERS			
	MATERIAL						
	5052-H32						
	TYPE & TEMPER	HEAT TREAT. SPEC.	DRAWN	CHECKED	FINAL APPROVAL		
	S404 YEL IRIDITE						
	FINISH & SPEC. NO.	ELEC. DES. APP.	MECH. DES. APP.	MSG044			
TOLERANCES		SCALE:					
MAXIMUM ALLOWABLE TOLERANCES HAVE BEEN DETERMINED AND ANY DEVIATIONS WILL BE CAUSE FOR REJECTION. REMOVE ALL BURRS AND SHARP EDGES							
ISSUE	ITEM	CHANGED FROM	DATE	CH. NO.	DRAFTS	CHECKER	ENG. APP.
Ø		ORIGINAL RELEASE FOR PRODUCTION	3.1.67				
X		EXP. RELEASE	12-2-66				

REQ. PER UNIT	USED ON		MSG045 A
	MODEL	DATE	
2	RAK-110-2	12-5-66	

HOLES:

A - 15/64 DIA. (2 REQ.)

MARK TMC PN
1/8 HIGH GOTHIC
W/LATEST REV. LETTER.

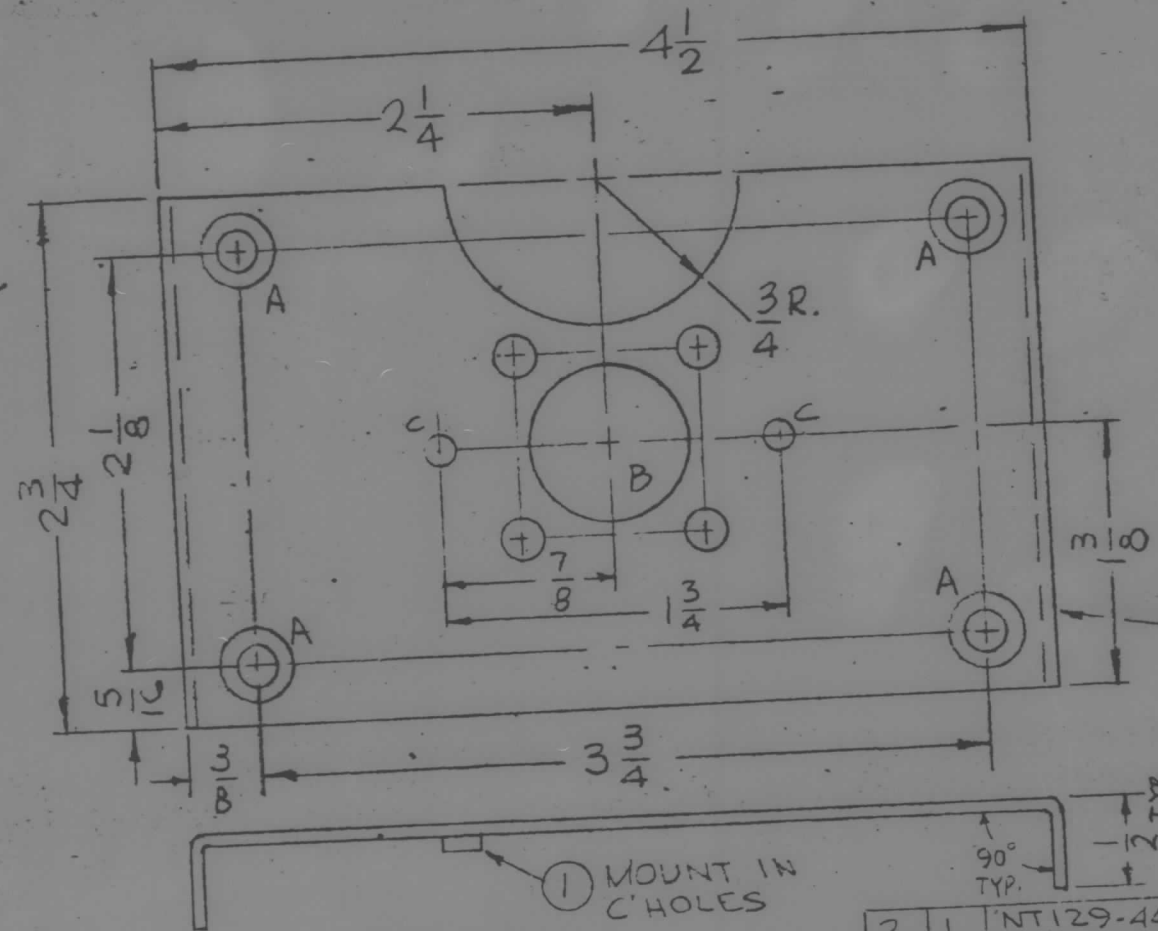


- UNLESS OTHERWISE SPECIFIED:
1. USE MATERIAL THICKNESS FOR MAXIMUM RADIUS ON ALL BENDS
 2. ALL ANGULAR BENDS 90 DEGREES
 3. REMOVE ALL BURRS AND SHARP EDGES

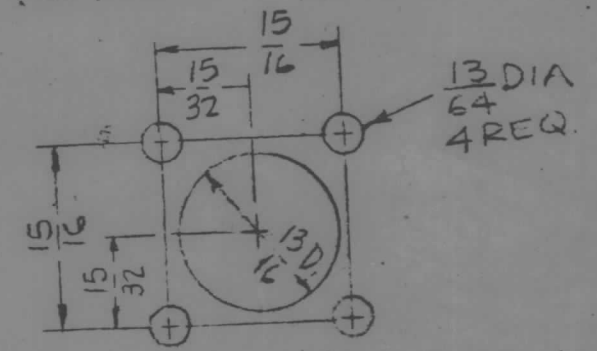
A	ADD DIM 2 3/8	2-6-69	19244	GE	JDe	FB	1/8 THICK	THE TECHNICAL MATERIEL CORP. MAMARONECK, NEW YORK BRACKET, MTG PLATE	MSG045 A
Ø	ORIGINAL RELEASE FOR PRODUCTION	3-1-67		WHD		STOCK SIZE			
X	EXP. RELEASE	12-5-66				ALUMINUM			
ISSUE	ITEM	CHANGED FROM	DATE	CH. NO.	DRAFTS	CHECKER	ENG. APP.		
TOLERANCES		SCALE: 1:1		5052-H32		TYPE & TEMPER		HEAT TREAT. SPEC.	
DEC. DIM. ±		MAXIMUM ALLOWABLE TOLERANCES HAVE BEEN DETERMINED AND ANY DEVIATIONS WILL BE CAUSE FOR REJECTION.		S404 YEL IRIDITE		FINISH & SPEC. NO.		ELEC. DES. APP.	
FRAC. DIM. ±		REMOVE ALL BURRS AND SHARP EDGES						MECH. DES. APP.	
ANGULAR DIM. ±									

REQ PER UNIT	USED ON	
	MODEL	ASSY. NO.
1	RAK-110-2	12-5-66
1	RAK-111-2	12-5-66

MS6046 0



HOLES:
 A-DRILL .196 DIA. C'SINK 82° TO .390 DIA (4REQ.)
 B-SEE DETAIL (1REQ.)
 C-.161-.164 DIA. (2REQ.)



B-DETAIL
 MARK TMC P/N (MS6046)
 1/8 HIGH GOTHIC
 W/LATEST REV.
 LETTER.

REQ.	ITEM	PART NO.	DESCRIPTION	SYMBOL
2	1	NT129-440-4	NUT, PLAIN, SPLINE	C
			F. BODETTI	
.081 THICK			THE TECHNICAL MATERIEL CORP.,	
STOCK SIZE			MAMARONECK, NEW YORK	
ALUMINUM			PLATE, MTG COUPLER	
MATERIAL				
5052-H32		HEAT TREAT. SPEC.	DRAWN	CHECKED
5404 YEL. IRIDITE		FINISH & SPEC. NO.	ELEC. DES. APP.	MECH. DES. APP.
TOLERANCES		SCALE:	FINAL APPROVAL	
DEC. DIM. ±		MAXIMUM ALLOWABLE TOLERANCES HAVE BEEN DETERMINED AND ANY DEVIATIONS WILL BE CAUSE FOR REJECTION. REMOVE ALL BURRS AND SHARP EDGES	MS6046 0	
FRAC. DIM. ±				
ANGULAR DIM. ±				

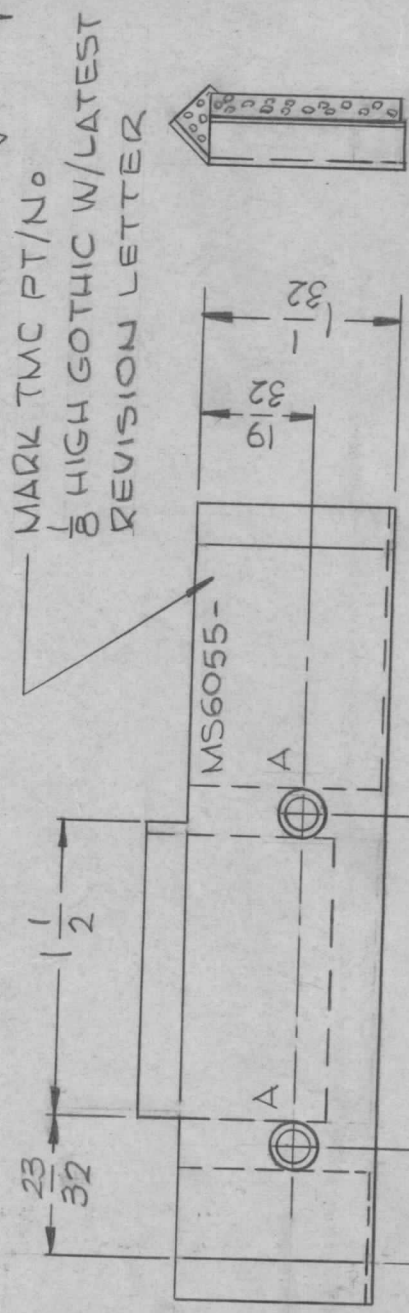
ORIGINAL RELEASE FOR PRODUCTION 3.1.67
 EXP. RELEASE 12-5-66
 CHANGED FROM: DATE, CH. NO., DRAFTS, CHECKER, ENG. APP.
 TOLERANCES: DEC. DIM. ±, FRAC. DIM. ±, ANGULAR DIM. ±

APPLICATION

QTY	MODEL USED ON	ASSY NO.	LTR
1	VOX-7	A4512	X
1	MMX-()	A4212	Ø
1	HOLE	A	A
1	A-HOLE	B	B

REVISIONS

DESCRIPTION	DATE	E.M.N.NO	DRAFT	CHKD	APPD
EXPERIMENTAL RELEASE	11/17/67		WTW		
ORIG. RELEASE FOR PROD.	6-26-67	Ø	RG		
MOD HFSR-4 DELETED	10/24/67	CC	8/8/67		
MOD MMX-() WAS MMX-1					
A-HOLE LEG. WAS 1/64 DIA.	12/2/68	19/31	K.H.		



MARK TMC PT/NO
 1/8 HIGH GOTHIC W/LATEST
 REVISION LETTER

UNLESS OTHERWISE SPEC.
 1-USE MAT'L THK FOR MAX
 RADIUS ON ALL BENDS.
 2-REMOVE ALL BURRS &
 SHARP EDGES.

HOLE:
 A ~ COUNTERSUNK FOR 6-32 F.M.S.
 .144 DIA. & 82° C SINK TO .284 DIA.

REQ'D ITEM	PART NUMBER	DESCRIPTION	SYM.
1	3	TAIII-2-8-1.50A	
1	2	TAIII-2-8-1.43A	
1	1	TAIII-2-8-0.62A	
		O. POSE	
		LIST OF MATERIAL	SK3213MS67
		THE TECHNICAL MATERIEL CORP. MAMARONECK, NEW YORK	
		CLAMP, CAPACITOR	

FINAL APPROVAL	DATE
<i>[Signature]</i>	12/20/67
MECH. DES.	DATE
<i>[Signature]</i>	6/23/67
ELECT. DES.	DATE
<i>[Signature]</i>	6/23/67
CHECKED	DATE
<i>[Signature]</i>	6/23/67
DRAWN	DATE
<i>[Signature]</i>	6/23/67

UNLESS OTHERWISE SPECIFIED
 DIMENSIONS ARE IN INCHES
 AND INCLUDE CHEMICALLY APPLIED
 OR PLATED FINISHES

DECIMALS
 .X ± .05
 .XX ± .01
 .XXX ± .005

FRACTIONS
 1/64
 ANGLES
 0°-30°

MATERIAL .051 THICK
 ALUMINUM, 5052-H32

FINISH
 S404-YELIRIDITE
 S401-451

NOTICE TO PERSONS RECEIVING THIS DRAWING
 THE TECHNICAL MATERIEL CORPORATION claims proprietary right in the material
 disclosed hereon. This drawing is issued in confidence for engineering information only
 and may not be reproduced or used to manufacture anything shown hereon without
 permission from THE TECHNICAL MATERIEL CORPORATION to the user. This drawing is
 loaned for mutual assistance and is subject to recall at any time.

SIZE	CODE IDENT. NO.	DWG NO.	ISSUE
A	82679	MS6055	B
SCALE 1:1		SHEET	OF

M/L MLLOR 6/26/67

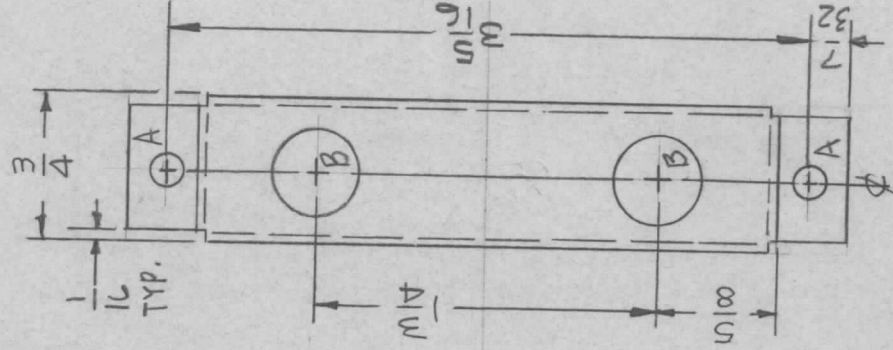
APPLICATION

QTY	MODEL USED ON	ASS'Y NO.	LTR
1	CHG-3	A4558	X
1	CHGR-3	A4558	Ø

REVISIONS

DESCRIPTION	DATE	E.M.N.NO	DRAFT	CHKD	APPD
EXP. RELEASE ORIGINAL RELEASE FOR PRODUCTION	1-4-67				
	1-9-67				

HOLES:
 A- 11/64 DIA. (2REQ)
 B- 434 DIA. (2REQ)



MARK TMC P/N
 1/8 HIGH GOTHIC
 W/LATEST REV.
 LETTER.

UNLESS OTHERWISE SPECIFIED:

1. USE MATERIAL THICKNESS FOR MAXIMUM RADIUS ON ALL BENDS
2. ALL ANGULAR BENDS 90 DEGREES
3. REMOVE ALL BURRS AND SHARP EDGES

UNLESS OTHERWISE SPECIFIED
 DIMENSIONS ARE IN INCHES
 AND INCLUDE CHEMICALLY APPLIED
 OR PLATED FINISHES

DECIMALS
 .X ± .05 TOLS.
 .XX ± .01 ANGLES
 .XXX ± .005 1/64
 0°-30'

MATERIAL .051 THK
 ALUM. 5052-H32

FINISH
 S404 YEL. IRIDITE

REQ'D ITEM

O. POSE

PART NUMBER

FINAL APPROVAL
 MECH. DES.
 ELECT. DES.
 CHECKED
 DRAWN

DATE
 1/10/67

DATE
 1/10/67

DATE
 1/10/67

DATE
 1-4-66

DESCRIPTION

LIST OF MATERIAL

THE TECHNICAL MATERIEL CORP.

MAMARONECK, NEW YORK

BRKT, MTG. RF OUTPUT INPUT

NOTICE TO PERSONS RECEIVING THIS DRAWING
 THE TECHNICAL MATERIEL CORPORATION claims proprietary right in the material disclosed hereon. This drawing is issued in confidence for engineering information only and may not be reproduced or used to manufacture anything shown hereon without permission from THE TECHNICAL MATERIEL CORPORATION to the user. This drawing is loaned for mutual assistance and is subject to recall at any time.

SIZE

A

CODE IDENT. NO.

82679

DWG NO.

MS6056

ISSUE

Ø

SCALE 1:1

SHEET

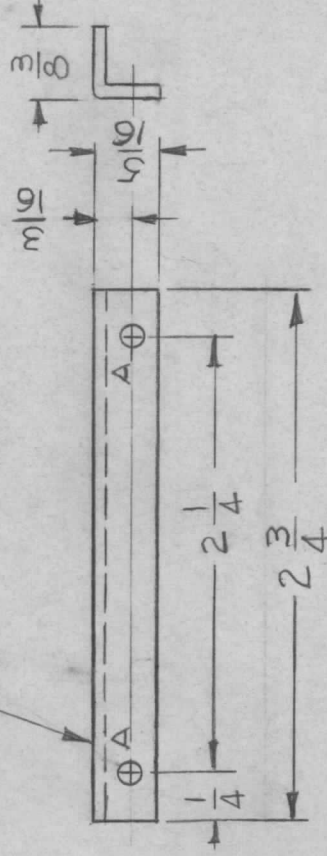
OF

REVISIONS

APPLICATION

QTY	MODEL USED ON	ASS'Y NO.	LTR	DESCRIPTION	DATE	E.M.N.NO	DRAFT	CHKD	APPD
2	VOX-7	AX651	X	EXP. RELEASE	HO-66	X	GDL	<i>[Signature]</i>	<i>[Signature]</i>
2	MMX-()	AX652	Ø	ORIG. RELEASE FOR PROD.	6-26-67	Ø	RG	<i>[Signature]</i>	<i>[Signature]</i>
			A	MOD. HFSR-4 DELETED MOD. MMX-() WAS MMX-1	10/24/67	CC	<i>[Signature]</i>	<i>[Signature]</i>	<i>[Signature]</i>

MARK TMC P/NO. MS 6063 -
1/8 HIGH GOTHIC W/LATEST
REV. LETTER. - HOLE -
A - 1/8 DIA. - 2 REQ.



UNLESS OTHERWISE SPECIFIED:

1. USE MATERIAL THICKNESS FOR MAXIMUM RADIUS ON ALL BENDS
2. ALL ANGULAR BENDS 90 DEGREES
3. REMOVE ALL BURRS AND SHARP EDGES

UNLESS OTHERWISE SPECIFIED DIMENSIONS ARE IN INCHES AND INCLUDE CHEMICALLY APPLIED OR PLATED FINISHES	REQ'D	ITEM	PART NUMBER	DESCRIPTION	SYM.
DECIMALS .X ± .05 .XX ± .01 .XXX ± .005				LIST OF MATERIAL SK 3213 MS66	
FRACTIONS 1/64				THE TECHNICAL MATERIEL CORP.	
TOLS. 0°-30°				MAMARONECK, NEW YORK	
MATERIAL .063 THK ALUMINUM 5052-H32				STIFFENER, P.C. BOARD	
FINISH S404 YEL. IRIDITE S401-451					
FINAL APPROVAL <i>[Signature]</i>					
MECH. DES. <i>[Signature]</i>					
ELECT. DES.					
CHECKED <i>[Signature]</i>					
DRAWN G.D.L					
DATE 6/21/67					
DATE 6/23/67					
DATE 1-10-67					
SIZE A	CODE IDENT. NO.	DWG NO.	ISSUE		
SCALE 1:1	82679	MS6063	A		

NOTICE TO PERSONS RECEIVING THIS DRAWING
THE TECHNICAL MATERIEL CORPORATION claims proprietary right in the material disclosed hereon. This drawing is issued in confidence for engineering information only and may not be reproduced or used to manufacture anything shown hereon without permission from THE TECHNICAL MATERIEL CORPORATION to the user. This drawing is loaned for mutual assistance and is subject to recall at any time.

APPLICATION

QTY MODEL USED ON ASS'Y NO. LTR

8 CUG-3

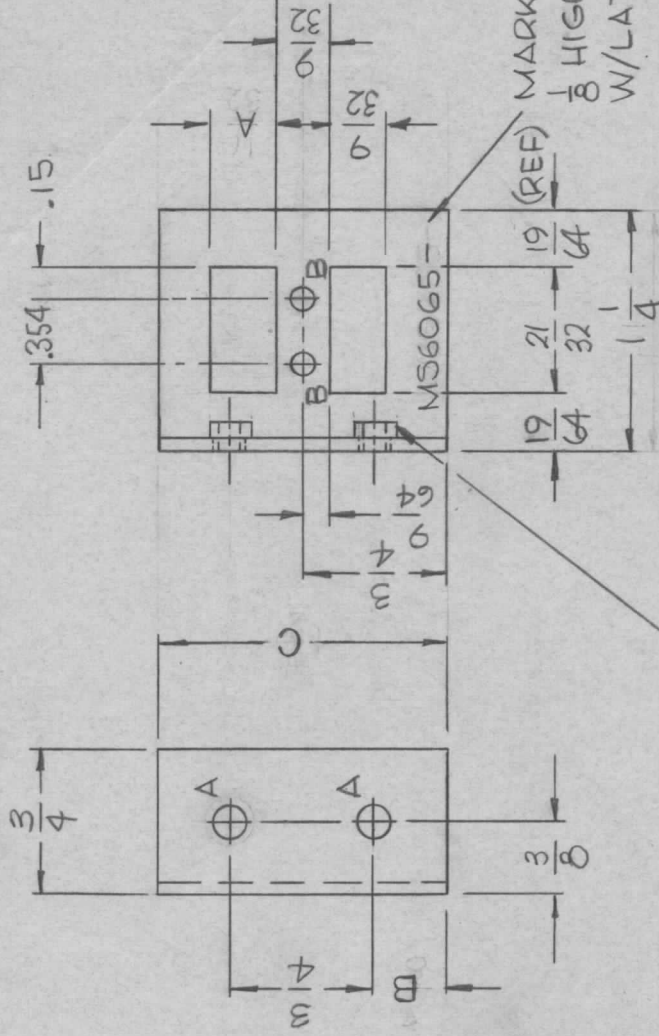
A

REVISIONS

DESCRIPTION	DATE	E.M.N.NO	DRAFT	CHKD	APPD
ORIGINAL RELEASE FOR PROD	7/10/67	8	CV		
MS6065-1,2,3,ADDED	9/11/67	20219	W.	Q1	RSA

HOLE	DESCRIPTION	REQ
A	.161-.164 DIA	2
B	1/8 DIA	2

PART NUMBER	A	B	C
MS6065-1	11/32	3/8	1-1/2
MS6065-2	9/16	15/32	1-11/16
MS6065-3	25/32	19/32	1-15/16



MOUNT ITEM 1 IN ALL A HOLES AS SHOWN

UNLESS OTHERWISE SPECIFIED:

1. USE MATERIAL THICKNESS FOR MAXIMUM RADIUS ON ALL BENDS
2. ALL ANGULAR BENDS 90 DEGREES
3. REMOVE ALL BURRS AND SHARP EDGES
4. MOUNT INSERTS AFTER FINISHING

REQ'D ITEM	PART NUMBER	DESCRIPTION	SYM.
2	1	NT129-440-4 NUT, ROUND, SWAGE TYPE	A

LIST OF MATERIAL

THE TECHNICAL MATERIEL CORP.
MAMARONECK, NEW YORK

FINAL APPROVAL	DATE
<i>W. Kay</i>	7/11/67
MECH. DES.	DATE
<i>W. Kay</i>	7/11/67
ELECT. DES.	DATE
<i>W. Kay</i>	7/11/67
CHECKED	DATE
<i>W. Kay</i>	7/11/67
DRAWN	DATE
<i>W. Kay</i>	7-9-67

MATERIAL 5052-H32
.064 THK ALUMINUM
FINISH S404 YEL IRIDITE

BKLT, SUPPORT, RELAY

NOTICE TO PERSONS RECEIVING THIS DRAWING
THE TECHNICAL MATERIEL CORPORATION claims proprietary right in the material disclosed hereon. This drawing is issued in confidence for engineering information only and may not be reproduced or used to manufacture anything shown hereon without permission from THE TECHNICAL MATERIEL CORPORATION to the user. This drawing is loaned for mutual assistance and is subject to recall at any time.

SIZE	CODE IDENT. NO.	DWG NO.	ISSUE
A	82679	MS6065	A
SCALE	SHEET	OF	

APPLICATION

QTY MODEL USED ON ASSY NO. LTR

1 SMEA-1

X

EXP. RELEASE

DATE 1-9-67

DRAFT GDL

APPD

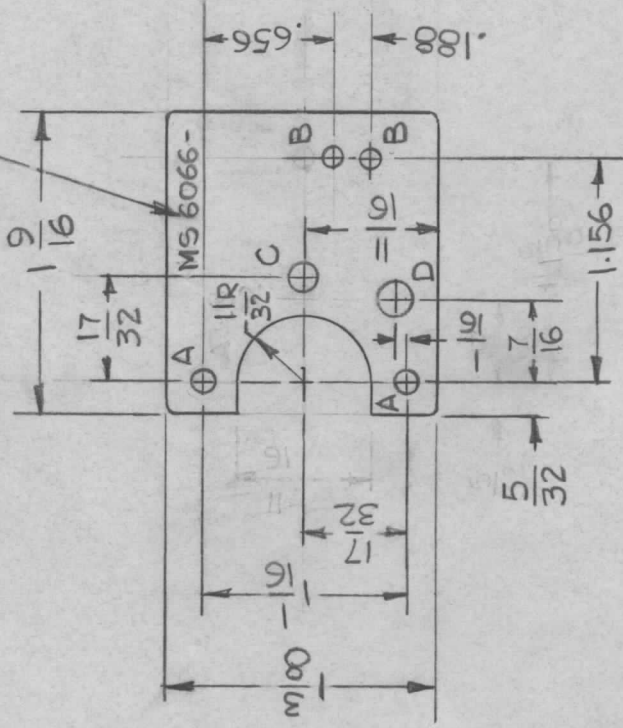
REVISIONS

Ø ORIG RELEASE FOR PROD

DATE 4-3-67

DRAFT CV

MARK TMC P/No 1/8 HIGH
GOTHIC W/LATEST REV.
LETTER.



HOLE	DESCRIPTION	REQ.
A	9/64 DIA.	2
B	.104 DIA	2
C	5/32 DIA	1
D	3/16 DIA	1

UNLESS OTHERWISE SPECIFIED
DIMENSIONS ARE IN INCHES
AND INCLUDE CHEMICALLY APPLIED
OR PLATED FINISHES

DECIMALS
.X ± .05
.XX ± .01
.XXX ± .005

FRACTIONS
1/64

TOLS.
ANGLES
0°-30°

MATERIAL .051 THK.
ALUMINUM, 5052-H32

FINISH
S404 YEL. IRIDITE

REQ'D ITEM	PART NUMBER	DATE
POSE		1-9-67
FINAL APPROVAL		DATE
MECH. DES.		DATE
ELECT. DES.		DATE
CHECKED		DATE
DRAWN	G.D.L.	DATE 1-9-67

REQ'D ITEM	PART NUMBER	DESCRIPTION	SYM.
		LIST OF MATERIAL SK3270 MSI	

REF: LD 2199

THE TECHNICAL MATERIEL CORP.
MAMARONECK, NEW YORK

PLATE, MTG. MICRO SWITCH

NOTICE TO PERSONS RECEIVING THIS DRAWING
THE TECHNICAL MATERIEL CORPORATION claims proprietary right in the material disclosed hereon. This drawing is issued in confidence for engineering information only and may not be reproduced or used to manufacture anything shown hereon without permission from THE TECHNICAL MATERIEL CORPORATION to the user. This drawing is loaned for mutual assistance and is subject to recall at any time.

SIZE	CODE IDENT. NO.	DWG NO.	ISSUE
A	82679	MS6066	Ø
SCALE	1:1	SHEET	OF

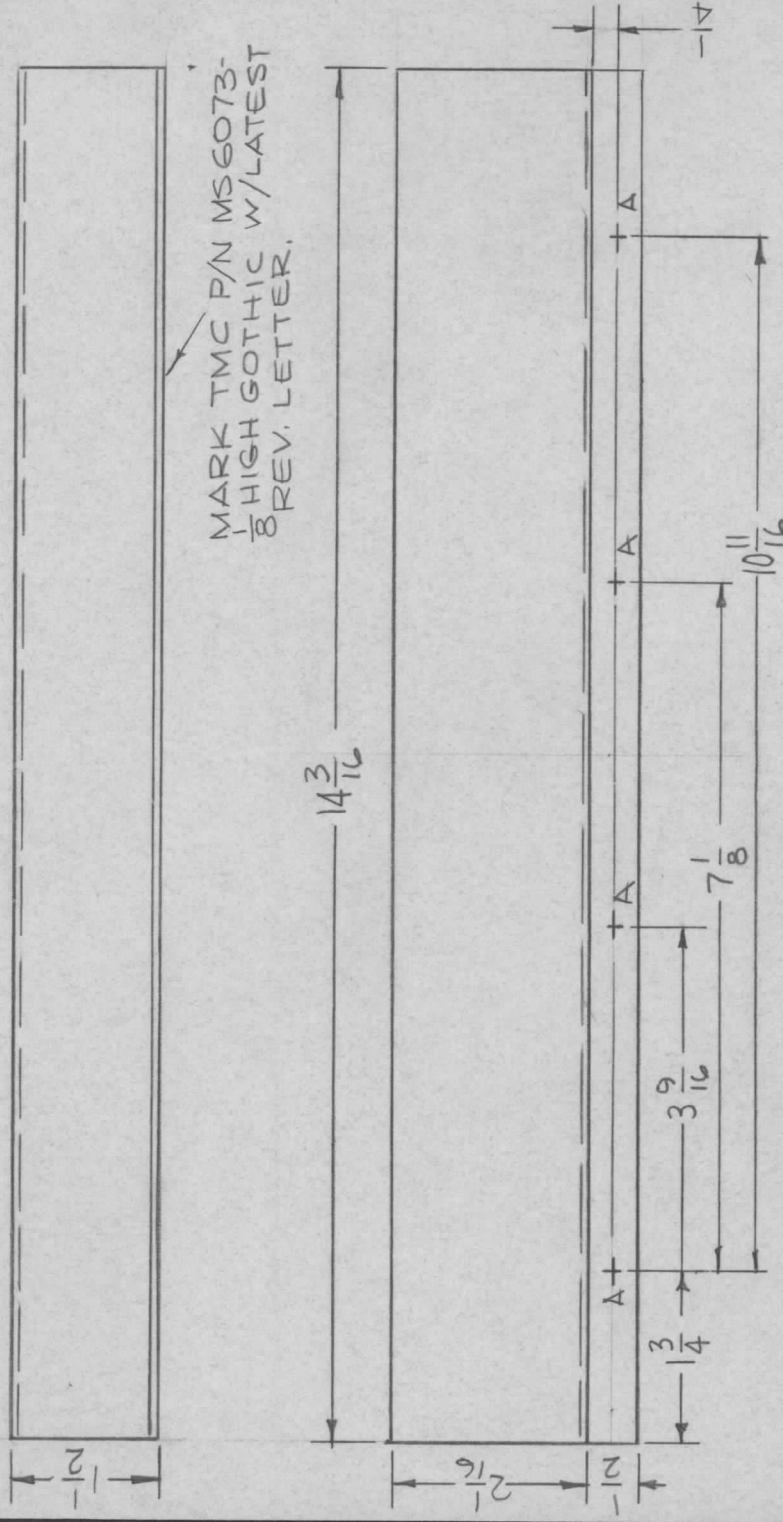
APPLICATION

REVISIONS

QTY	MODEL USED ON	ASS'Y NO.	LTR	DESCRIPTION	DATE	E.M.N.NO	DRAFT	CHKD	APPD
1	LPFA-40K		X1	COMPLETELY REVISED	2-3-67		RG	ad	ad
			Ø	ORIG RELEASE FOR PROD.	5-25-67	Ø			

HOLES:

A - 11/64 DIA. 4 REQ.



UNLESS OTHERWISE SPECIFIED:

1. USE MATERIAL THICKNESS FOR MAXIMUM RADIUS ON ALL BENDS
2. ALL ANGULAR BENDS 90 DEGREES
3. REMOVE ALL BURRS AND SHARP EDGES

UNLESS OTHERWISE SPECIFIED DIMENSIONS ARE IN INCHES AND INCLUDE CHEMICALLY APPLIED OR PLATED FINISHES

DECIMALS FRACTIONS
 .X ± .05 TOLS. 1/64
 .XX ± .01 ANGLES
 .XXX ± .005 0° - 30°

MATERIAL .051
 ALUM. 5052-H32
 FINISH S520 TEX. PAINT
 OUTSIDE ONLY
 S401-451

REQ'D ITEM	PART NUMBER	DESCRIPTION	SYM.
F. BUDETTI			
FINAL APPROVAL		LIST OF MATERIAL	
MECH. DES.		THE TECHNICAL MATERIEL CORP.	
ELECT. DES.		MAMARONECK, NEW YORK	
CHECKED		COVER, TERM. STRIP	
DRAWN			

NOTICE TO PERSONS RECEIVING THIS DRAWING
 THE TECHNICAL MATERIEL CORPORATION claims proprietary right in the material disclosed hereon. This drawing is issued in confidence for engineering information only and may not be reproduced or used to manufacture anything shown hereon without permission from THE TECHNICAL MATERIEL CORPORATION to the user. This drawing is loaned for mutual assistance and is subject to recall at any time.

SIZE	CODE IDENT. NO.	DWG NO.	ISSUE
A	82679	MSG073	Ø
SCALE	1:2	M/L	SHEET
			OF

APPLICATION

QTY MODEL USED ON ASSY NO.

Z LPFA-40K

LTR

X

REVISIONS

DESCRIPTION

DATE

E.M.N.NO

DRAFT

CHKD

APPD

EXP. RELEASE

1-17-67

RG

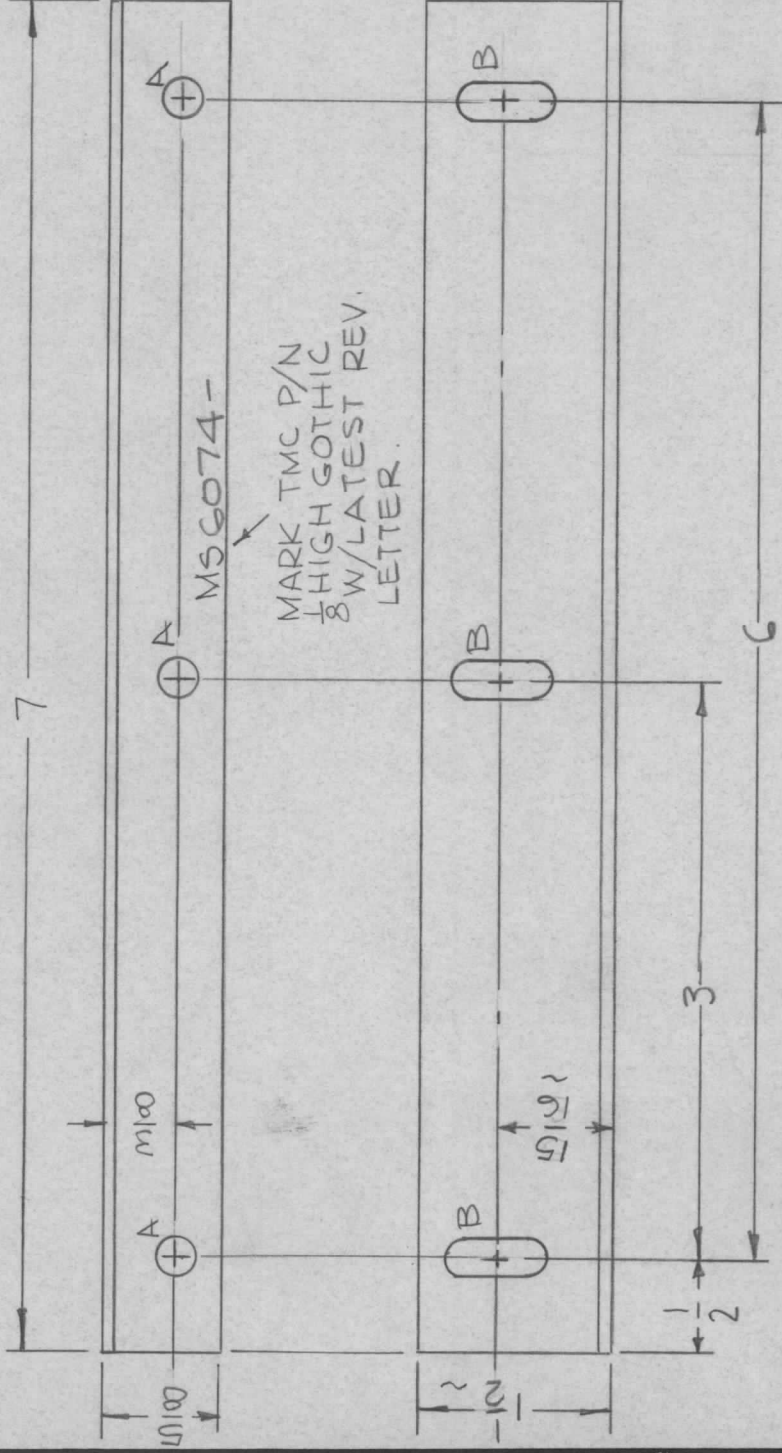
X1 1 1/2 WAS 1, 15/16 WAS 5/8, 3/4 SLOT WAS 1/8

1-19-67

Ø ORIG RELEASE FOR PROD.

5-25-67

Ø



UNLESS OTHERWISE SPECIFIED:

1. USE MATERIAL THICKNESS FOR MAXIMUM RADIUS ON ALL BENDS
2. ALL ANGULAR BENDS 90 DEGREES
3. REMOVE ALL BURRS AND SHARP EDGES

HOLES:

A- 13/64 DIA. 3 REQ.

B- 3/4 X 3/16 SLOT (3 REQ.)

UNLESS OTHERWISE SPECIFIED DIMENSIONS ARE IN INCHES AND INCLUDE CHEMICALLY APPLIED OR PLATED FINISHES

DECIMALS .X ± .05 .XX ± .01 .XXX ± .005

FRACTIONS 1/64 TOLS. ANGLES 0°-30°

MATERIAL .081 THICK ALUM. 5052-H32

FINISH S520 TEX. PAINT S401-451

REQ'D ITEM PART NUMBER

F. BUDETTI

FINAL APPROVAL

MECH. DES.

CHECKED

DRAWN

DATE 5/25/67

DATE

DATE

DATE 5-24-67

DATE 1-17-67

DESCRIPTION

LIST OF MATERIAL

THE TECHNICAL MATERIEL CORP.

MAMARONECK, NEW YORK

BRACKET, MTG. FILTER

SYM.

NOTICE TO PERSONS RECEIVING THIS DRAWING

THE TECHNICAL MATERIEL CORPORATION claims proprietary right in the material disclosed herein. This drawing is issued in confidence for engineering information only and may not be reproduced or used to manufacture anything shown hereon without permission from THE TECHNICAL MATERIEL CORPORATION to the user. This drawing is loaned for mutual assistance and is subject to recall at any time.

SIZE CODE IDENT. NO. DWG NO.

A 82679 MS 6074

ISSUE

Ø

SCALE 1:1

M/L

SHEET

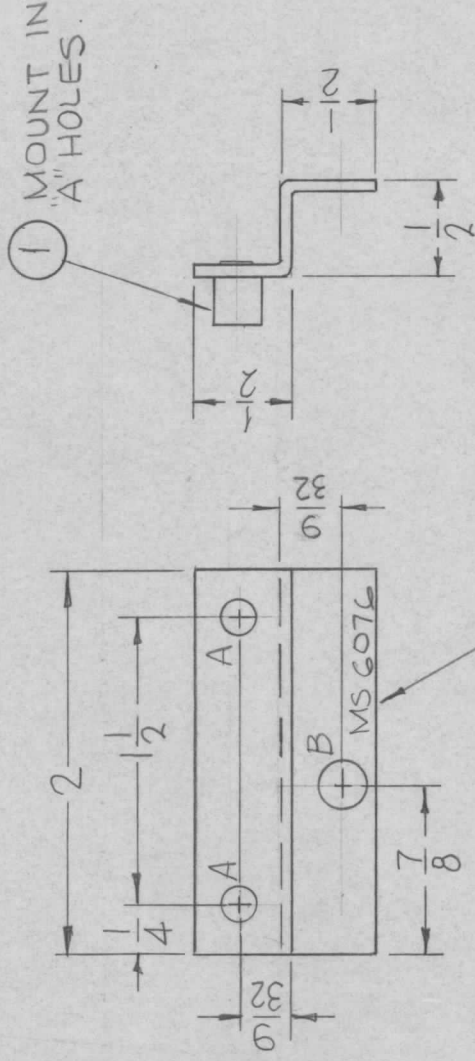
OF

APPLICATION

QTY	MODEL USED ON	ASS'Y NO.	LTR
1	KIT-320		X
1	PS-4B		Ø

REVISIONS

DESCRIPTION	DATE	E.M.N.NO	DRAFT	CHKD	APPD
EXP. RELEASE FOR ORIGINAL RELEASE FOR PRODUCTION	1-12-66		<i>[Signature]</i>	<i>[Signature]</i>	<i>[Signature]</i>
	3/23/67		RME		



MARK TMC P/N
 1/8 HIGH GOTHIC
 W/LATEST REV.
 LETTER

UNLESS OTHERWISE SPECIFIED:

1. USE MATERIAL THICKNESS FOR MAXIMUM RADIUS ON ALL BENDS
2. ALL ANGULAR BENDS 90 DEGREES
3. REMOVE ALL BURRS AND SHARP EDGES
4. MOUNT INSERTS AFTER FINISHING

HOLES	DESCRIPTION	REQ.
A	.189 DIA.	2 (REQ.)
B	15/64 DIA.	1 (REQ.)

2	1	TE108-1	STANDOFF, RIVET TYPE	A
REQ'D	ITEM	PART NUMBER	DESCRIPTION	SYM.
F. BUDETTI				
FINAL APPROVAL			LIST OF MATERIAL	
<i>[Signature]</i>			THE TECHNICAL MATERIEL CORP.	
MECH. DES.			MAMARONECK, NEW YORK	
ELECT. DES.			BRACKET, MTG. PC BOARD	
CHECKED				
DRAWN				
MATERIAL 064 ALUM.			THE TECHNICAL MATERIEL CORP.	
5052-432			MAMARONECK, NEW YORK	
FINISH				
5404 YEL. IRIDITE				

NOTICE TO PERSONS RECEIVING THIS DRAWING
 THE TECHNICAL MATERIEL CORPORATION claims proprietary right in the material disclosed hereon. This drawing is issued in confidence for engineering information only and may not be reproduced or used to manufacture anything shown hereon without permission from THE TECHNICAL MATERIEL CORPORATION to the user. This drawing is loaned for mutual assistance and is subject to recall at any time.

SIZE	CODE IDENT. NO.	DWG NO.	ISSUE
A	82679	MS 6076	Ø
SCALE	1:1	SHEET	OF

APPLICATION

QTY	MODEL USED ON	ASS'Y NO.
2	TR162-A	A4577

LTR

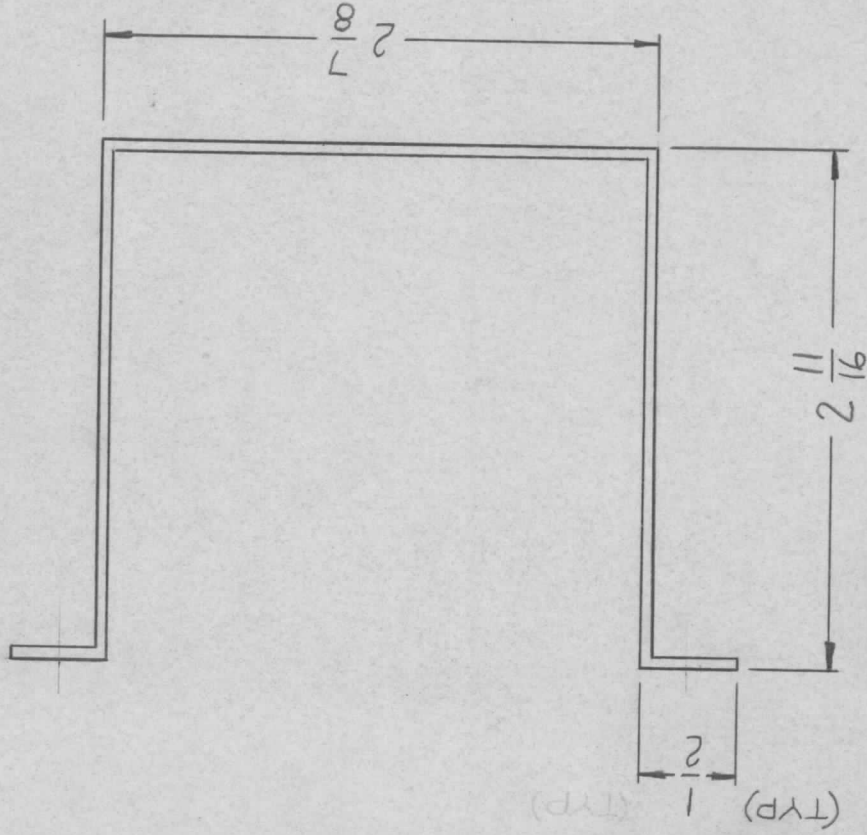
X1

REDRAWN & REVISED

ORIG. RELEASE FOR PROD.

REVISIONS

DATE	E.M.N.NO	DRAFT	CHKD	APPD
3.16.67	-	GH0	JHL	FB
4.13.67				



UNLESS OTHERWISE SPECIFIED:

1. USE MATERIAL THICKNESS FOR MAXIMUM RADIUS ON ALL BENDS
2. ALL ANGULAR BENDS 90 DEGREES
3. REMOVE ALL BURRS AND SHARP EDGES

~HOLE~

A - 13/64 DIA - 2 REQ

UNLESS OTHERWISE SPECIFIED
DIMENSIONS ARE IN INCHES
AND INCLUDE CHEMICALLY APPLIED
OR PLATED FINISHES

DECIMALS FRACTIONS
X ± .05 TOLS. 1/64
XX ± .01 ANGLES
.XXX ± .005 0° .30'

MATERIAL 5052-H32
.064 ALUMINUM

FINISH
S404 YEL IRIDITE

REQ'D ITEM

L. BUTLER

PART NUMBER

DESCRIPTION

LIST OF MATERIAL

SYM.

FINAL APPROVAL

MECH. DES.

ELECT. DES.

CHECKED

DRAWN

DATE

DATE

DATE

DATE

DATE

4/17

4/17

4/17

4/13/67

3.16.67

THE TECHNICAL MATERIEL CORP.
MAMARONECK, NEW YORK

STRAP, XFMR TIEDOWN

NOTICE TO PERSONS RECEIVING THIS DRAWING

THE TECHNICAL MATERIEL CORPORATION claims proprietary right in the material disclosed hereon. This drawing is issued in confidence for engineering information only and may not be reproduced or used to manufacture anything shown hereon without permission from THE TECHNICAL MATERIEL CORPORATION to the user. This drawing is loaned for mutual assistance and is subject to recall at any time.

SIZE

A

CODE IDENT. NO.

82679

DWG NO.

MS6096

ISSUE

0

SCALE 1:1

SHEET

OF