

4

3

2

1

MACHINING:

- 1. MILL ALL EDGES.
- 2. HOLES MUST BE DRILLED, UNLESS OTHERWISE SPECIFIED.
- 3. LATERAL BOW OF PANEL MUST BE KEPT TO .031 TOLERANCE.
- 4. PANEL MUST BE FREE OF ALL MACHINING MARKS, GOUGES AND SCRATCHES. IF NECESSARY, SAND FRONT OF PANEL WITH NO. 120 GRIT SANDPAPER.

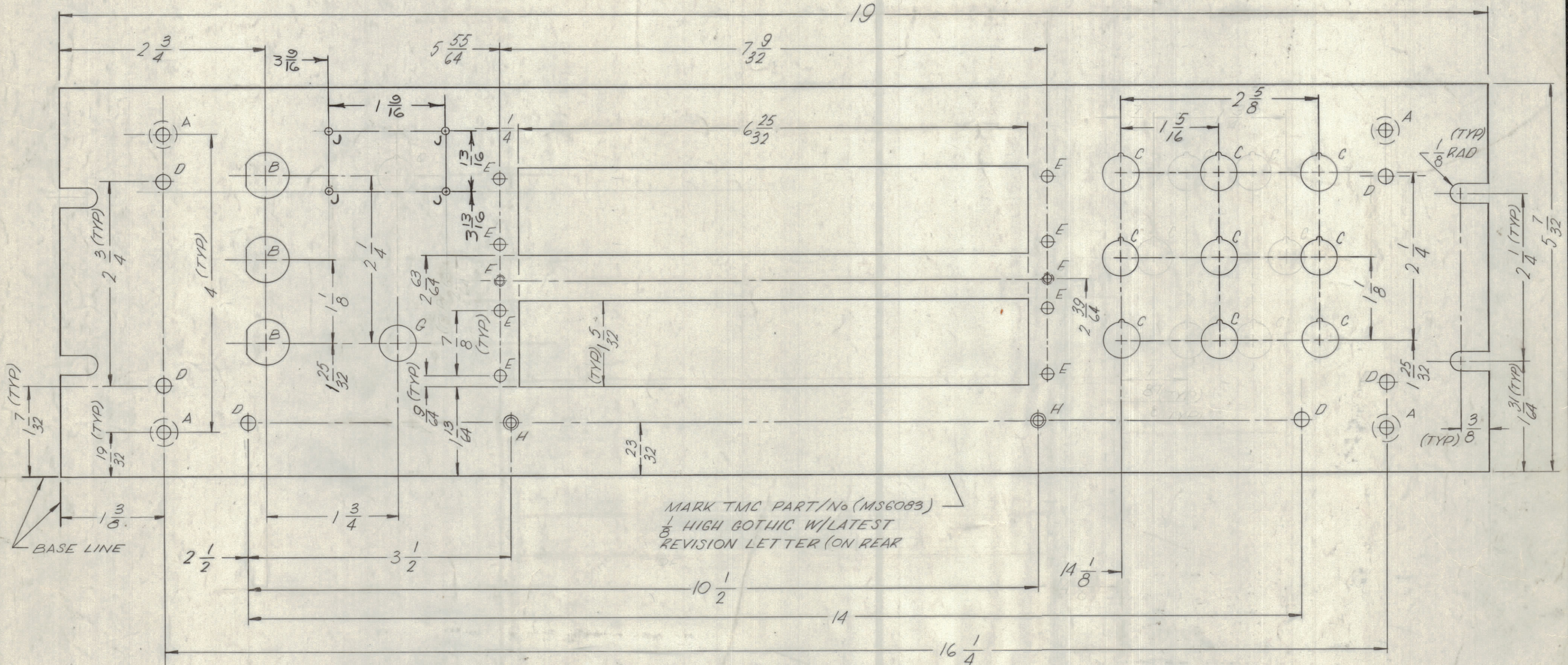
FINISH NOTES:

- 1. S404 - IRIDITE 14-2 AL-COAT.
 - 2. S114 - ZINC CHROMATE PRIMER } FRONT AND
 - 3. S115 - SMOOTH GRAY ENAMEL } EDGES ONLY
- OR
PRIME AND PAINT PER CUSTOMER'S SPECIFICATIONS.

REVISIONS

ZONE	LTR	DESCRIPTION	DATE	E.M.N.NO	DRAFT	CHKD	APPD
	X	EXPERIMENTAL RELEASE	2.3.67	+	WHD		
	X1	2 "C" HOLES DELETED	7.13.67	-	WHD		
	X2	ADDED HOLES	3-7-68		WHD		
		ORIGINAL RELEASE FOR PRODUCTION	12-6-68		EG		
	A	REF LD 2348 ADDED	3.25.69	-	GE		SD
	B	CHANGED REF DWGS	10/23/69		CC	KD	SD

FRONT VIEW SHOWN



REF: (LD2174 RTIH-3) (LD2348 RTIH-4)

QTY. REQ.	ITEM	PART NO.	DESCRIPTION	SYMBOL
-----------	------	----------	-------------	--------

LIST OF MATERIAL

F. EATON THE TECHNICAL MATERIEL CORP. MAMARONECK, NEW YORK

FINAL APPROVAL: [Signature] DATE: 12/4/68

CHECKED: [Signature] DATE: 3-7-68

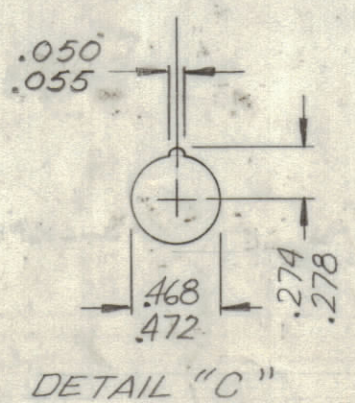
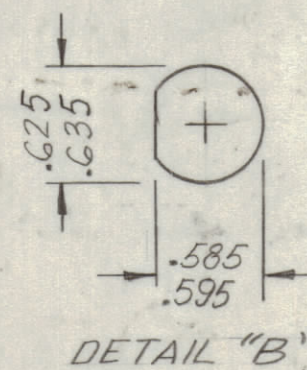
DRAWN: W.H.W. DATE: 2.3.67

PANEL, FRONT

SIZE	CODE IDENT. NO.	DWG NO.	ISSUE
C	82679	MS6083	B

SCALE 1:1 SHEET OF

HOLE	DESCRIPTION	REQ
A	.196 DIA EC SK 82° X .390 DIA (ON REAR)	4
B	SEE DETAIL	3
C	SEE DETAIL	9
D	13/64 DIA	6
E	9/64 DIA	8
F	DR TAP 4-40 THRU	2
G	15/32 DIA	1
H	13/64 DIA EC SK 82° FOR 8-32 F.H. SCR	2
J	NO 48 (.0760) DR	4



QTY / UNIT	MODEL USED ON	ASS'Y NO.
1	RTIH- ()	

APPLICATION

CODE

NOTICE TO PERSONS RECEIVING THIS DRAWING THE TECHNICAL MATERIEL CORPORATION claims proprietary right in the material disclosed hereon. This drawing is issued in confidence for engineering information only and may not be reproduced or used to manufacture anything shown hereon without permission from THE TECHNICAL MATERIEL CORPORATION to the user. This drawing is loaned for mutual assistance and is subject to recall at any time.

UNLESS OTHERWISE SPECIFIED DIMENSIONS ARE IN INCHES AND INCLUDE CHEMICALLY APPLIED OR PLATED FINISHES

TOLERANCES ON

DECIMALS: .X ± .05, .XX ± .01, .XXX ± .005
 FRACTIONS: ± 1/64, ANGLES: ± 0° - 30'

MATERIAL 3116 ALUMINUM 2024-T3

FINISH S404 YELLOW IRIDITE

4

3

2

1

MS6083 B B

A