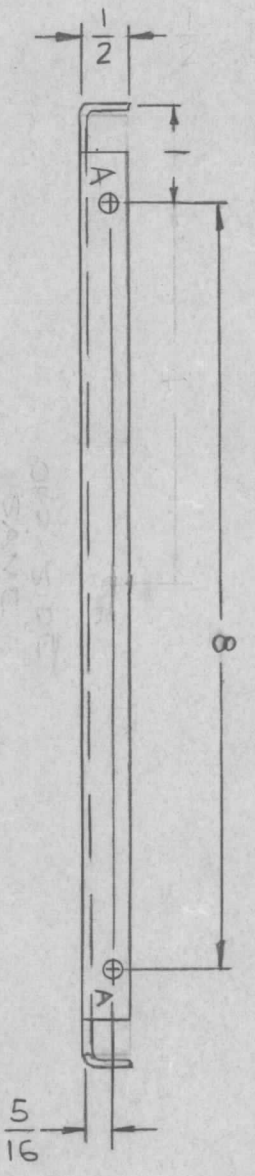
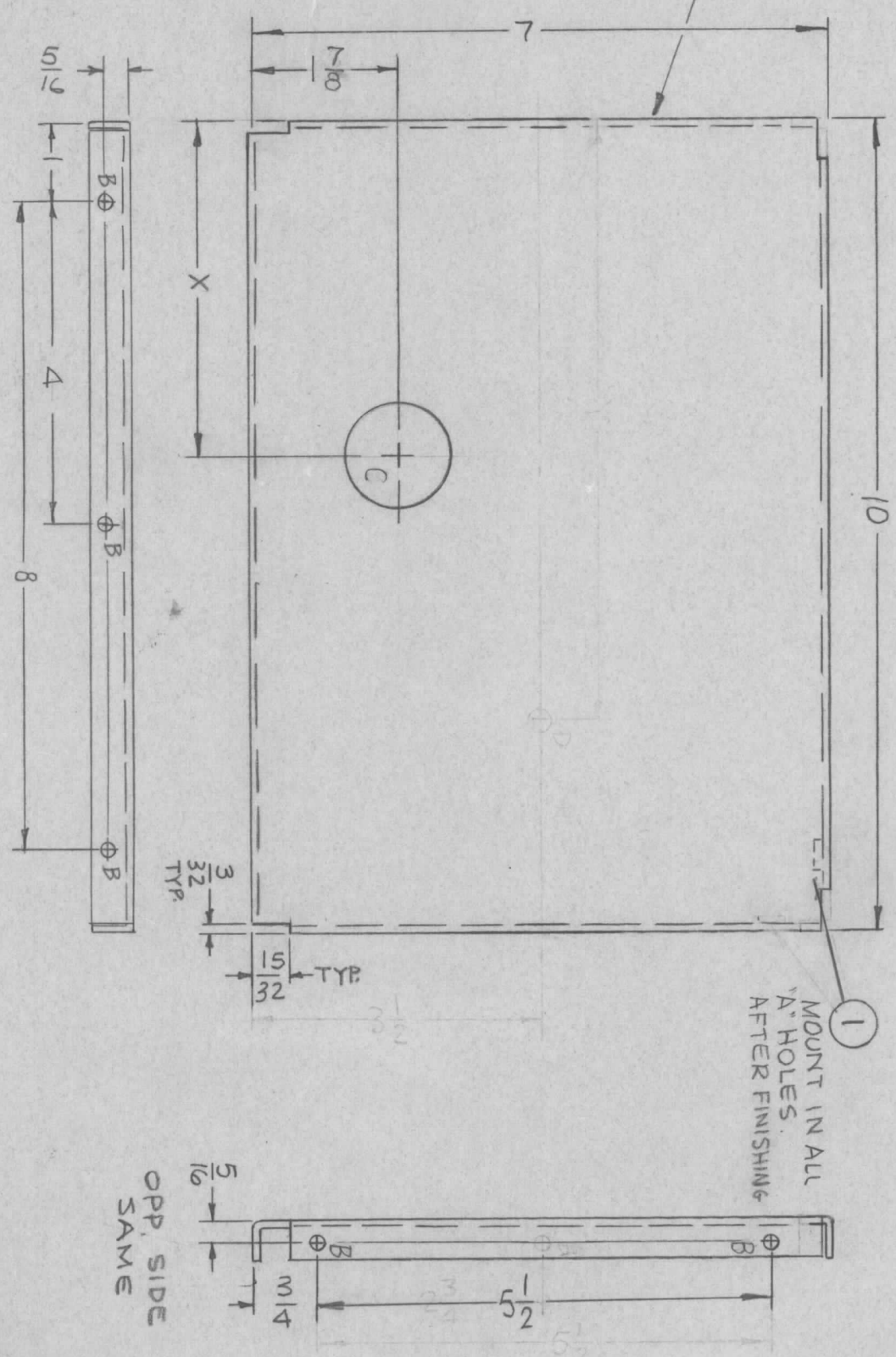


REVISIONS						
ZONE	LTR	DESCRIPTION	DATE	E.M.N. NO.	DRAFT	CHKD
X		EXP. RELEASE	1-6-67			
X1		4-1/8 WAS 4-7/8	1-19-67			
X2		MSG072-1 REV. MSG072-3 ADDED	2-3-67			
Ø		ORIG. RELEASE FOR PROD	5-22-67			
Δ		9/32 DIA "D" HOLE BE- LOCATED DIM 5 DEL.	1-12-82	21923	GBL	



MARK TMC P/N
MSG072
HIGH GOTHIC
Ø/LATEST REV.
LETTER.



OPP. SIDE
SAME

HOLES	DESCRIPTION	REQ.
A	.191-.194 DIA.	2
B	11/64 DIA.	7
C	1-1/4 DIA	1

TMC P/N	X	QTY/UNIT
MSG072-1	1	1
MSG072-2	2-1/8	3
MSG072-3	4-7/8	1

REQ'D ITEM	PART NUMBER	DESCRIPTION	SYM.
2	1	NT 129-632-4 NUT, PLAIN SPLINE	A

LIST OF MATERIAL

THE TECHNICAL MATERIEL CORP.
MAMARONECK, NEW YORK

SHIELD, FILTER

SEE CHART	LPFA-40K	ASS'Y NO.
QTY / UNIT	MODEL USED ON	
APPLICATION		
	CODE	

UNLESS OTHERWISE SPECIFIED DIMENSIONS ARE IN INCHES AND INCLUDE CHEMICALLY APPLIED OR PLATED FINISHES

DECIMALS .X ± .05
.XX ± .01
XXX ± .005

FRACTIONS 1/64
ANGLES 0°-30°

MATERIAL: 064 ALUMINUM 5052-H32

FINISH: S404 YEL IRIDITE

FINAL APPROVAL	DATE
Mech. Des.	DATE
ELECT. DES.	DATE
CHECKED	DATE
DRAWN	DATE

SIZE CODE IDENT. NO. DWG NO. ISSUE

B 82679 MS 6072 A

SCALE 1:2 SHEET OF

- UNLESS OTHERWISE SPECIFIED:
1. USE MATERIAL THICKNESS FOR MAXIMUM RADIUS ON ALL BENDS
 2. ALL ANGULAR BENDS 90 DEGREES
 3. REMOVE ALL BURRS AND SHARP EDGES
 4. MOUNT INSERTS AFTER FINISHING

NOTICE TO PERSONS RECEIVING THIS DRAWING

THE TECHNICAL MATERIEL CORPORATION claims proprietary right in the material disclosed hereon. This drawing is issued in confidence for engineering information only and may not be reproduced or used to manufacture anything shown hereon without permission from THE TECHNICAL MATERIEL CORPORATION to the user. This drawing is loaned for mutual assistance and is subject to recall at any time.