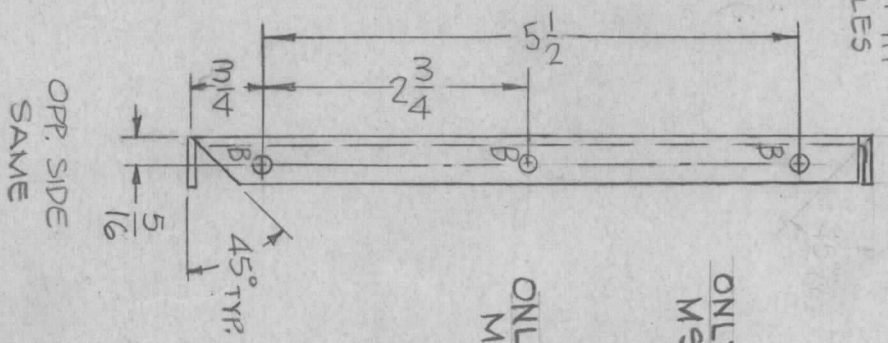
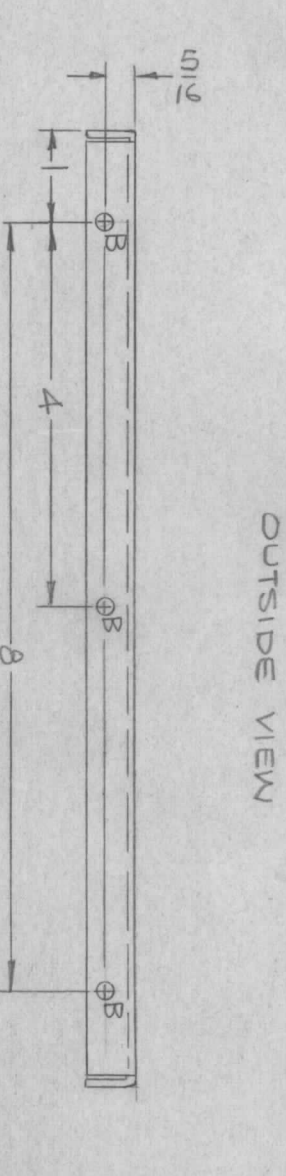
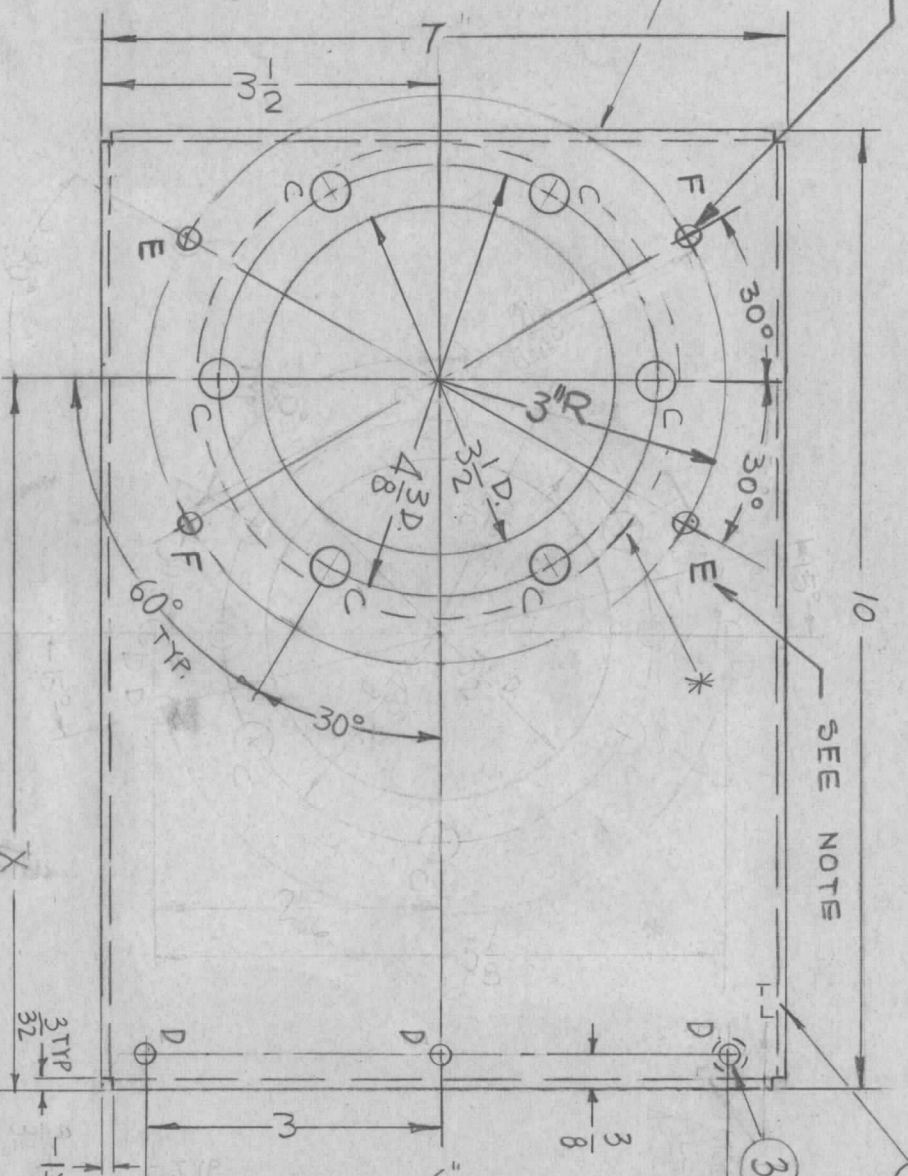
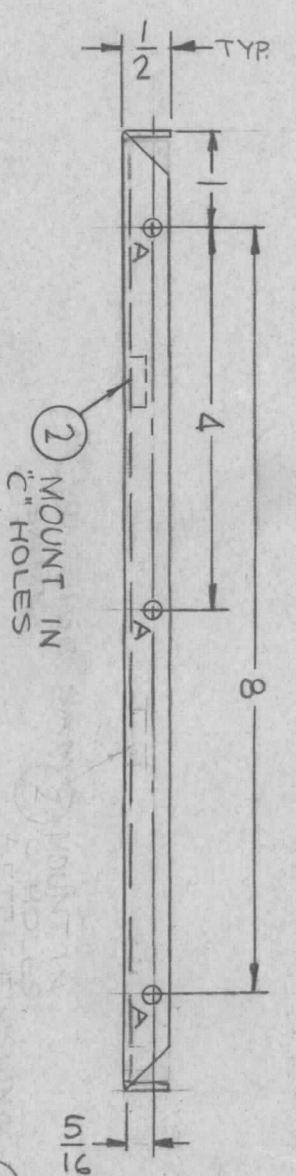


REVISIONS							
ZONE	LTR	DESCRIPTION	DATE	E.M.N.NO	DRAFT	CHKD	APPD
X		EXP. RELEASE	1-6-67				
X 1		7-3/8 WAS 7-3/4, 30° WAS 15°	1-31-67				
X 2		2D HOLES DEL. 4 1/8 ADDED	2-3-67				
Ø		ORIG RELEASE FOR PROD. 52567			Ø	RS	
Δ		TWO "E" HOLES OR TWO "F" HOLE ADD.	1-28-67	21927	GD.L		



HOLES	DESCRIPTION	REQ
A	.191-.194 DIA.	3
B	11/64 DIA.	9
C	.487-.484 DIA.	6
D	.221-.224 DIA.	3
E	.250 DIA	2
F	.250 DIA	2

TMC P/N	DESCRIPTION	X DIM.
MS 6070-1	AS SHOWN	7.3/8
MS 6070-2	TURN LIPS OPR. DIRECTION	4.5/8

REQ'D ITEM	PART NUMBER	DESCRIPTION	SYM.
3	NT 129-832-4	NUT, PLAIN, SPLINE	D
6	NT 129-616-4	NUT, PLAIN, SPLINE	C
3	NT 129-632-4	NUT, PLAIN, SPLINE	A

F. BUDETTI				LIST OF MATERIAL			
FINAL APPROVAL	DATE	THE TECHNICAL MATERIEL CORP.		MAMARONECK, NEW YORK.		PLATE, END VIEW	
MECH. DES.	DATE						
ELECT. DES.	DATE						
CHECKED	DATE						
DRAWN	DATE						

UNLESS OTHERWISE SPECIFIED DIMENSIONS ARE IN INCHES AND INCLUDE CHEMICALLY APPLIED OR PLATED FINISHES	DECIMALS	FRACTIONS	TOLS.	ANGLES
	.X ± .05	1/64		0°-30'
	.XX ± .01			
	.XXX ± .005			

QTY / UNIT	MODEL USED ON	ASS'Y NO.
1 EA	LPPFA-40K	
APPLICATION		
5401-451	CODE	A

NOTICE TO PERSONS RECEIVING THIS DRAWING  
 THE TECHNICAL MATERIEL CORPORATION claims proprietary right in the material disclosed hereon. This drawing is issued in confidence for engineering information only and may not be reproduced or used to manufacture anything shown hereon without permission from THE TECHNICAL MATERIEL CORPORATION to the user. This drawing is loaned for mutual assistance and is subject to recall at any time.

- UNLESS OTHERWISE SPECIFIED:
1. USE MATERIAL THICKNESS FOR MAXIMUM RADIUS ON ALL BENDS
  2. ALL ANGULAR BENDS 90 DEGREES
  3. REMOVE ALL BURRS AND SHARP EDGES
  4. MOUNT INSERTS AFTER FINISHING

FINISH NOTE:  
 S520 TEX. PAINT  
 OUTSIDE ONLY  
 \* LEAVE THIS 5" DIA AREA UNPAINTED

MARK TMC P/N  
 MS 6070-  
 1 HIGH GOTHIC  
 8/LATEST REV.  
 W/LATEST REV.  
 LETTER.

SEE NOTE

SEE NOTE

OUTSIDE VIEW

OPR. SIDE SAME