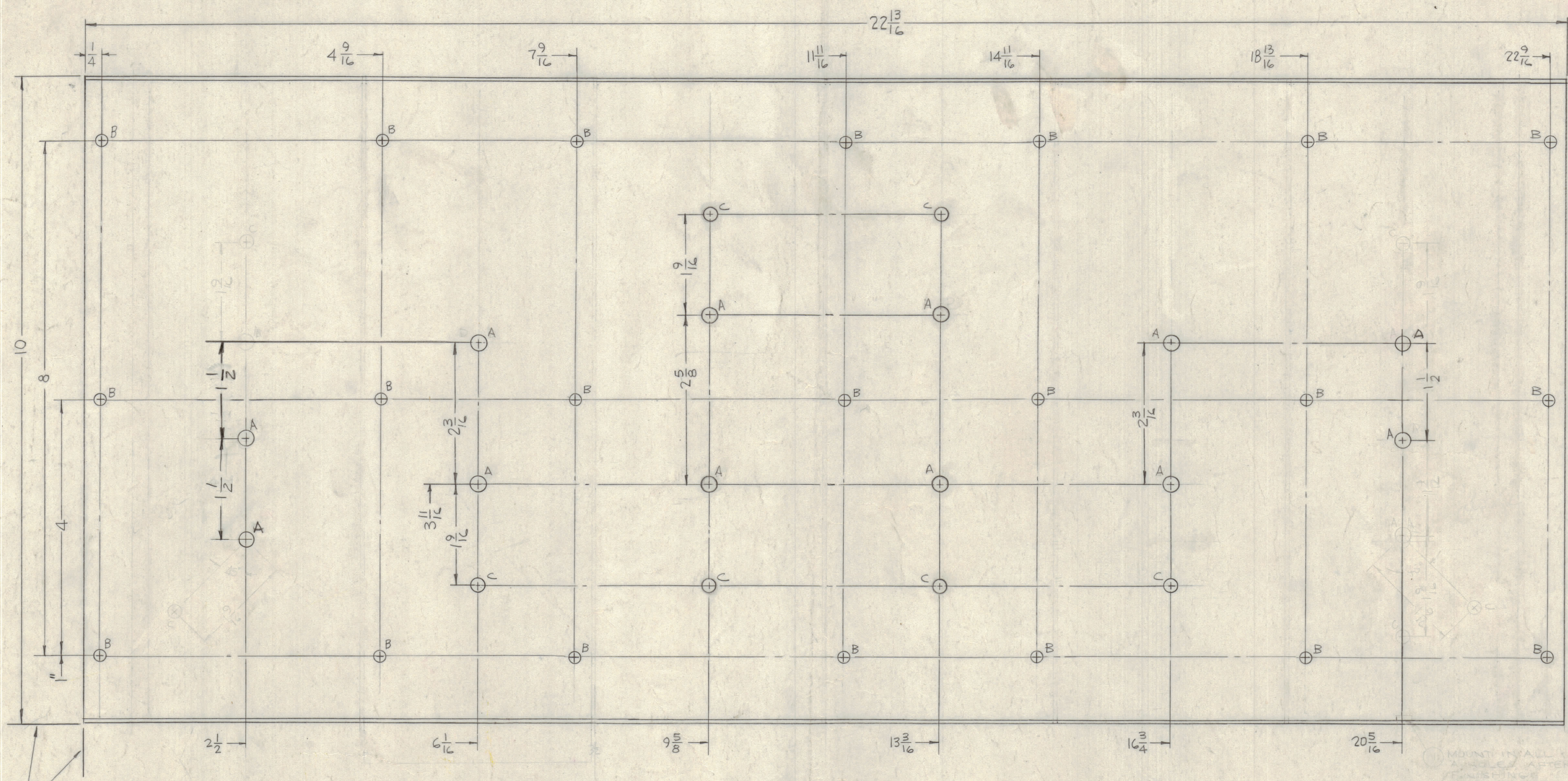


REVISIONS						
ZONE	LTR	DESCRIPTION	DATE	E.M.N.NO	DRAFT	CHKD
X		EXP RELEASE	1-6-67			
X1		1C, 1A HOLES RELOCATED	1-19-67			
X2		1A-1C HOLES RELOCATED	2-3-67			
		ORIGINAL RELEASE FOR PRODUCTION	4-6-67			
A		TWO "C" HOLES DELETE, TWO "A" HOLES RELOCATED	1-12-82	21967	GDL	



HOLES	DESCRIPTION	REQ
A	15/64 DIA.	12
B	11/64 DIA	33
C	13/64 DIA	6

- UNLESS OTHERWISE SPECIFIED:
- USE MATERIAL THICKNESS FOR MAXIMUM RADIUS ON ALL BENDS
  - ALL ANGULAR BENDS 90 DEGREES
  - REMOVE ALL BURRS AND SHARP EDGES

1	LPFA-40K	
QTY / UNIT	MODEL USED ON	ASS'Y NO.
APPLICATION		
	CODE	
NOTICE TO PERSONS RECEIVING THIS DRAWING		
THE TECHNICAL MATERIEL CORPORATION claims proprietary right in the material disclosed herein. This drawing is issued in confidence for engineering information only and may not be reproduced or used to manufacture anything shown hereon without permission from THE TECHNICAL MATERIEL CORPORATION to the user. This drawing is loaned for mutual assistance and is subject to recall at any time.		

UNLESS OTHERWISE SPECIFIED DIMENSIONS ARE IN INCHES AND INCLUDE CHEMICALLY APPLIED OR PLATED FINISHES

TOLERANCES ON

DECIMALS	FRACTIONS
.X ± .05	± 1/64
.XX ± .01	ANGLES ± 0° 30'
.XXX ± .005	

MATERIAL .064 ALUM. 5052-H32

FINISH 5520 TEX. PAINT OUTSIDE ONLY

QTY. REQ.	ITEM	PART NO.	DESCRIPTION	SYMBOL
F. BUDETT				
LIST OF MATERIAL				
FINAL APPROVAL		DATE	THE TECHNICAL MATERIEL CORP.	
MECH. DES.		DATE	MAMARONECK, NEW YORK	
ELECT. DES.		DATE	CHASSIS, FILTER	
CHECKED		DATE	SIZE CODE IDENT. NO. DWG NO.	
DRAWN		DATE	D 82679 MS6068	
MATERIAL			SCALE	ISSUE
FINISH			1:1	A
			M/L	OF