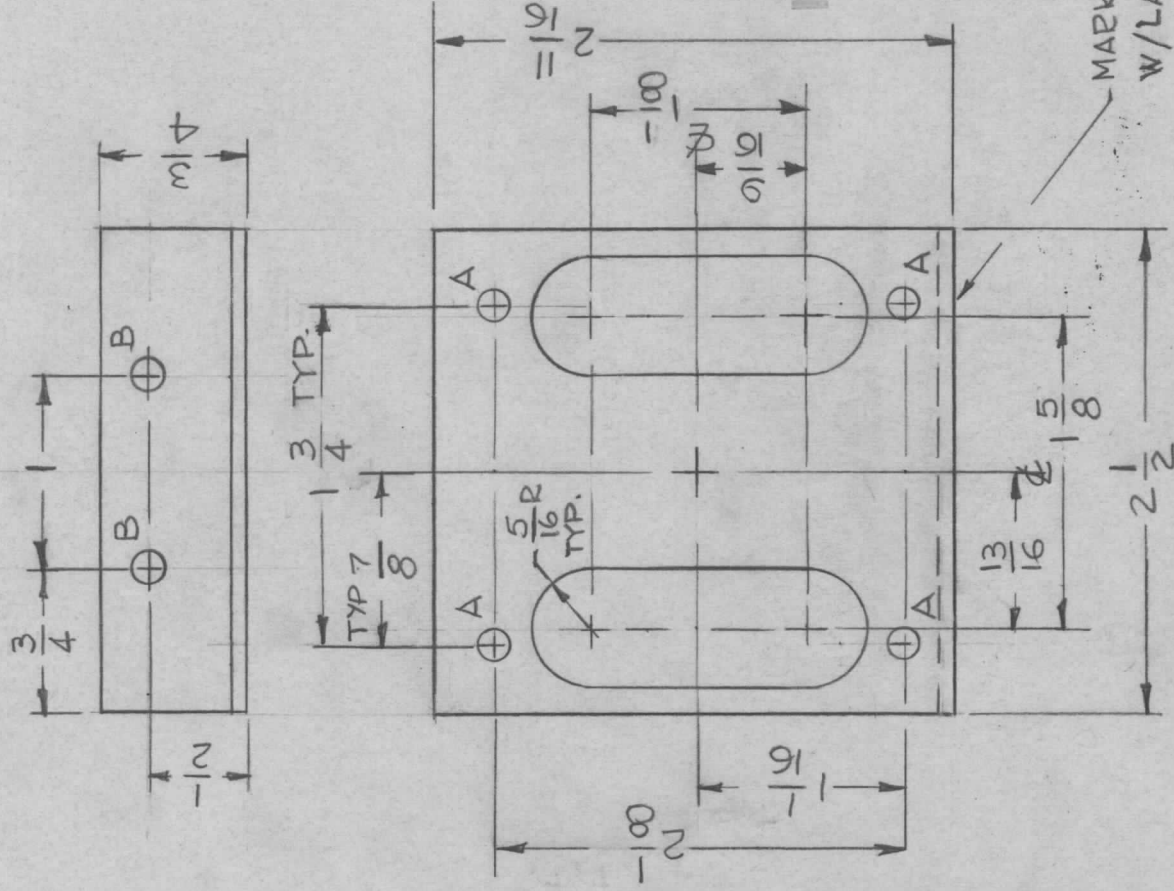


APPLICATION

QTY	MODEL USED ON	ASS'Y NO.	LTR
1	SBT-350 WAXI	AX650-2	∅

REVISIONS

DESCRIPTION	DATE	E.M.N.NO	DRAFT	CHKD	APPD
ORIGINAL RELEASE FOR PRODUCTION	1-30-67		L.A.K.		J.D.



HOLE	DESCRIPTION	REQ
A	11/64 DIA	4
B	3/16	2

UNLESS OTHERWISE SPECIFIED:

1. USE MATERIAL THICKNESS FOR MAXIMUM RADIUS ON ALL BENDS
2. ALL ANGULAR BENDS 90 DEGREES
3. REMOVE ALL BURRS AND SHARP EDGES

MARK TMC P/No. 1/8 HIGH GOTHIC
W/LATEST REVISION LETTER

REF: LD 2198

UNLESS OTHERWISE SPECIFIED
DIMENSIONS ARE IN INCHES
AND INCLUDE CHEMICALLY APPLIED
OR PLATED FINISHES

DECIMALS FRACTIONS
.X ± .05 1/64
.XX ± .01 ANGLES
.XXX ± .005 90° .30'

MATERIAL .081THK
ALUMINUM 5052-H32
FINISH
S404 YEL. IRIDITE

REQ'D ITEM

BUTLER

PART NUMBER

DESCRIPTION

LIST OF MATERIAL

SYM.

FINAL APPROVAL	DATE
<i>[Signature]</i>	1/30/67
MECH. DES	DATE
<i>[Signature]</i>	1-24-67
ELECT. DES.	DATE
<i>[Signature]</i>	
CHECKED	DATE
<i>[Signature]</i>	
DRAWN	DATE
G.D.L.	1-9-67

THE TECHNICAL MATERIEL CORP.

MAMARONECK, NEW YORK

BRACKET, MTG, TRANSFORMER

NOTICE TO PERSONS RECEIVING THIS DRAWING
THE TECHNICAL MATERIEL CORPORATION claims proprietary right in the material disclosed hereon. This drawing is issued in confidence for engineering information only and may not be reproduced or used to manufacture anything shown hereon without permission from THE TECHNICAL MATERIEL CORPORATION to the user. This drawing is loaned for mutual assistance and is subject to recall at any time.

SIZE CODE IDENT. NO.

A 82679

DWG NO.

MS 6064

ISSUE

∅

SCALE

1:1

SHEET

OF