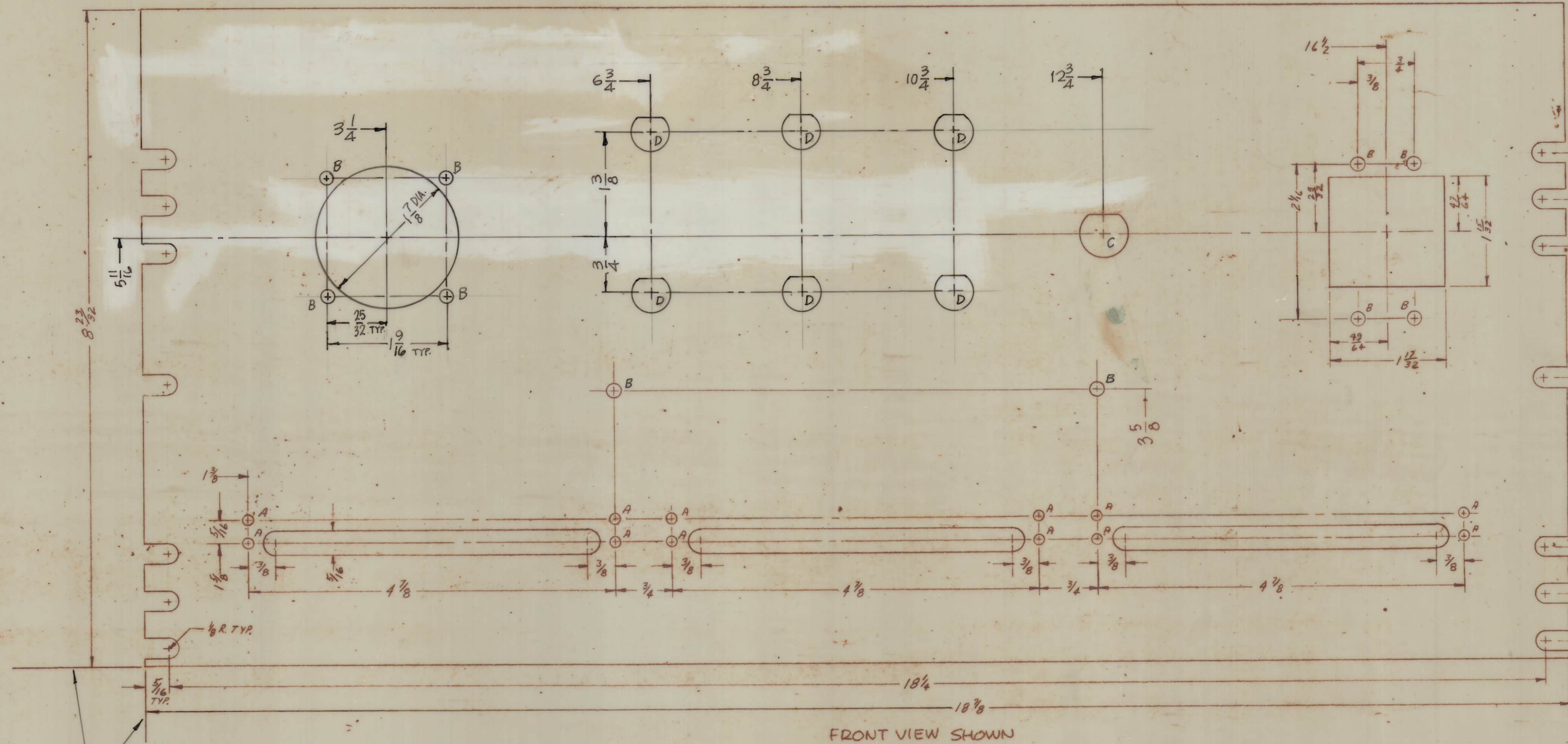


| REVISIONS | | | | | | | |
|-----------|-----|---------------------------------|----------|------------|-------|------|------|
| ZONE | SYM | DESCRIPTION | DATE | E.M.N. NO. | DRAFT | CHKD | APPD |
| | X | EXPERIMENTAL RELEASE | 12-28-46 | | | | |
| | X1 | ON C DETAIL DIMS WERE .564-.625 | 2-23-47 | | | | |
| | Ø | ORIGINAL RELEASE FOR PRODUCTION | 2-22-67 | | | | |



- A - 1/8 DIA — 12 REQ.
- B - 1/16 DIA — 10 REQ.
- C — 1 REQ.
- D — 6 REQ.

METAL STAMP TMC.
PART NO. 1/8 HIGH
GOTHIC, W/LATEST
REV. LETTER ON REAR.
(MS)

LOCATING
BASE LINES

FRONT VIEW SHOWN

- MACHINING:**
1. MILL ALL EDGES.
 2. HOLES MUST BE DRILLED, UNLESS OTHERWISE SPECIFIED.
 3. LATERAL BOW OF PANEL MUST BE KEPT TO .031 TOLERANCE.
 4. PANEL MUST BE FREE OF ALL MACHINING MARKS, GOUGES AND SCRATCHES. IF NECESSARY, SAND FRONT OF PANEL WITH NO. 120 GRIT SANDPAPER.

NOTES

REF: LD1517

| REQ'D | ITEM | PART NUMBER | DESCRIPTION | SYMBOL |
|---------------------------------------|------|--|-------------|--------|
| F. BUDETTI LIST OF MATERIAL | | | | |
| MATERIAL | | THE TECHNICAL MATERIEL CORP. MAMARONECK, NEW YORK | | |
| FINISH | | TITLE | | |
| 2024-T3 | | PANEL, SHIELD, CENTER | | |
| S402 | | DRAWN | | |
| YELLOW IRIDITE | | DATE | | |
| UNLESS OTHERWISE SPECIFIED | | FINAL APPROVAL | | |
| DIMENSIONS ARE IN INCHES AND INCLUDE | | DATE | | |
| CHEMICALLY APPLIED OR PLATED FINISHES | | DATE | | |
| DECIMALS | | ELECT. DES. | | |
| X ± .05 | | DATE | | |
| XX ± .01 | | MECH. DES. | | |
| XXX ± .005 | | DATE | | |
| TOLERANCES | | DATE | | |
| FRACTIONS | | DATE | | |
| ± 1/64" | | DATE | | |
| ANGLES | | DATE | | |
| ± 5° 30' | | DATE | | |

MS6054

MS6054