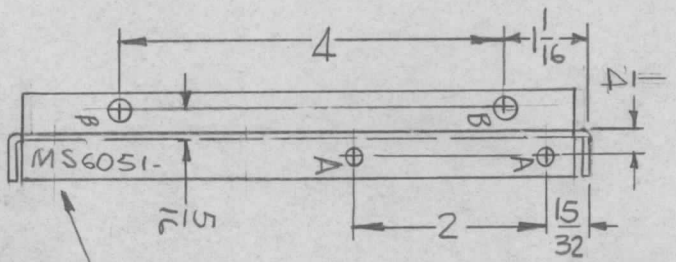
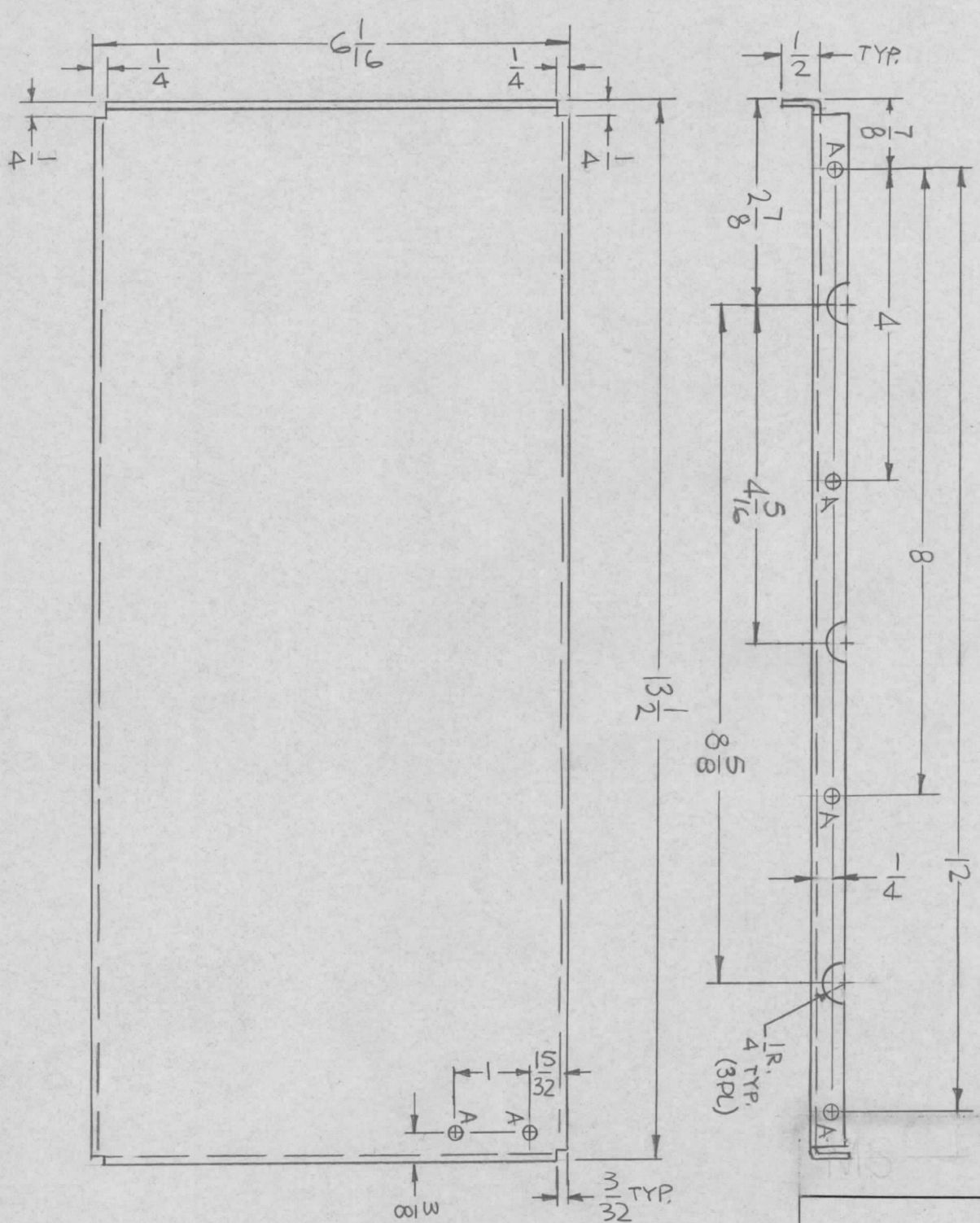


REVISIONS

SYM	DESCRIPTION	DATE	E.M.N. NO.	DRAFT	CHKD	APPD
X	EXP. RELEASE	12-7-66				
Ø	ORIGINAL RELEASE FOR PRODUCTION	1/11/67		CV		



HOLES
 A - 11/64 DIA. (8 REA.)
 B - 13/64 DIA. (2 REA.)

MARK TMC P/N
 HIGH GOT HIC
 W/LATEST REV.
 LETTER,

MS 6051-1 AS SHOWN
 MS 6051-2 OPP. HAND

UNLESS OTHERWISE SPECIFIED:

1. USE MATERIAL THICKNESS FOR MAXIMUM RADIUS ON ALL BENDS
2. ALL ANGULAR BENDS 90 DEGREES
3. REMOVE ALL BURRS AND SHARP EDGES

NOTES

QTY./UNIT	1EA	MODEL USED ON	TCSA-1	ASSY. NO.	AX632
SCALE	1:2	CODE	A		

THE CONTENTS OF THIS DRAWING ARE THE EXCLUSIVE PROPERTY OF THE TECHNICAL MATERIEL CORP. ITS UNAUTHORIZED USE OR REPRODUCTION IN WHOLE OR IN PART IS STRICTLY FORBIDDEN.

REQ'D.	ITEM	PART NUMBER	DESCRIPTION	SYMBOL
	F. BUDETTI		LIST OF MATERIAL	

MATERIAL
 .064 THICK ALUM
 5052-H32

THE TECHNICAL MATERIEL CORP.
 MAMARONECK, NEW YORK

FINISH
 S404 YEL. IRIDITE

TITLE
 PLATE, SIDE, LEFT & RIGHT

UNLESS OTHERWISE SPECIFIED	DIMENSIONS ARE IN INCHES AND INCLUDE CHEMICALLY APPLIED OR PLATED FINISHES	TOLERANCES	FRACTIONS	DECIMALS
			± 1/64 ANGLES ± 0° 30'	X ± .05 .XX ± .01 .XXX ± .005

DRAWN	CHECKED	ELECT. DES.	MECH. DES.	DATE	DATE	DATE	DATE
				12-7-66			

FINAL APPROVAL	DATE
	1/11/67

SHEET	REV. LTR.
MS 6051	Ø