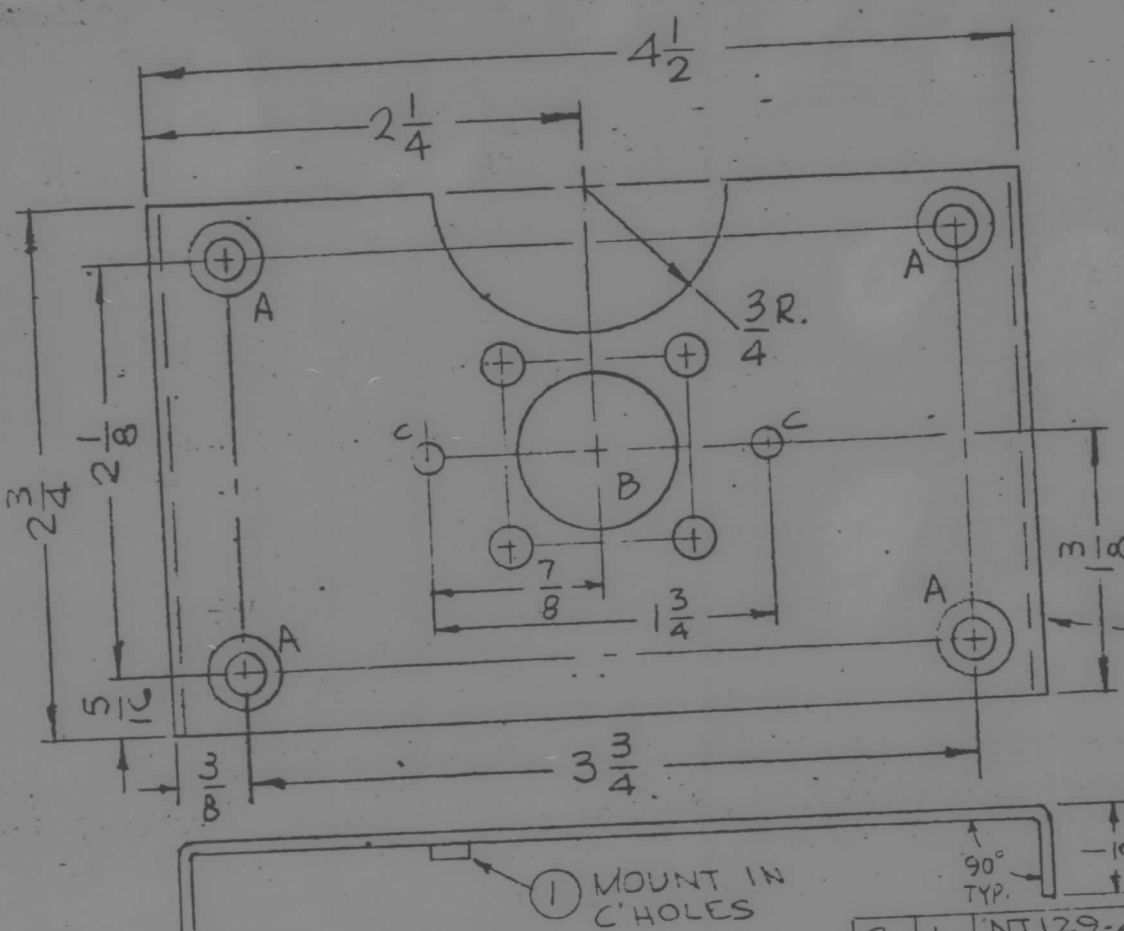
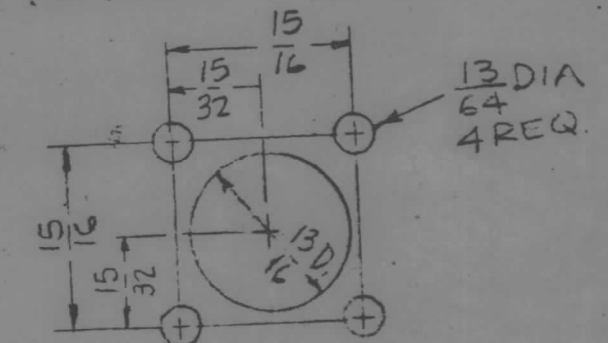


REQ PER UNIT	USED ON	
	MODEL	ASSY. NO.
1	RAK-110-2	12-5-66
1	RAK-111-2	12-5-66

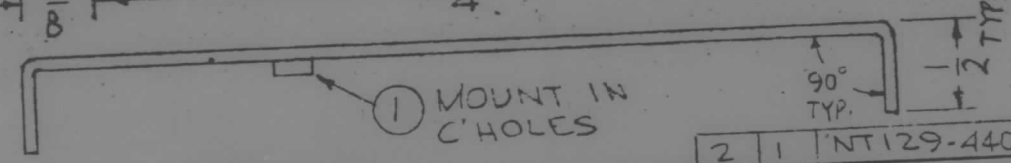
MS6046



HOLES:
A - DRILL .196 DIA. C'SINK 92° TO .390 DIA (4 REQ.)
B - SEE DETAIL (1 REQ.)
C - .161-.164 DIA. (2 REQ.)



B-DETAIL
MARK TMC P/N (MS6046)
1/8 HIGH GOTHIC
W/LATEST REV.
LETTER.



ISSUE ITEM	CHANGED FROM	DATE	CH. NO.	DRAFTS	CHECKER	ENG. APP.	REQ. ITEM	PART NO.	DESCRIPTION	SYMBOL	
Ø	ORIGINAL RELEASE FOR PRODUCTION	3.1.67		WHD			2	NT129-440-4	NUT, PLAIN, SPLINE	C	
X	EXP. RELEASE	12-5-66					1		F. BUDETTI		
TOLERANCES							SCALE:				
DEC. DIM. ±							MAXIMUM ALLOWABLE TOLERANCES HAVE BEEN DETERMINED AND ANY DEVIATIONS WILL BE CAUSE FOR REJECTION.				
FRAC. DIM. ±							REMOVE ALL BURRS AND SHARP EDGES				
ANGULAR DIM. ±											
							5052-H32		DRAWN		CHECKED
							5404 YEL. IRIDITE		ELEC. DES. APP.		MECH. DES. APP.
							FINISH & SPEC. NO.		MS6046		Ø

M/L