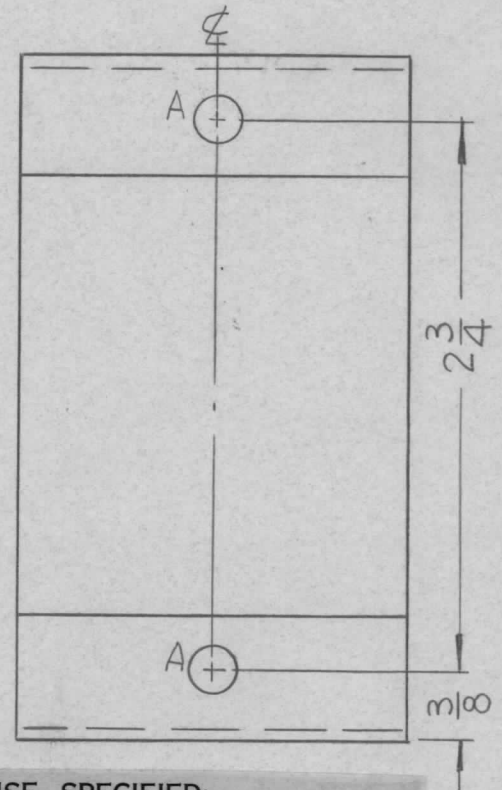
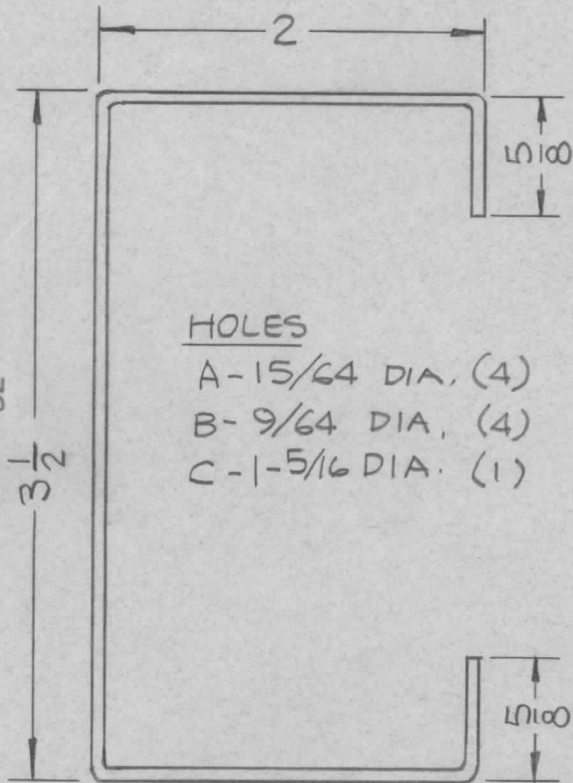
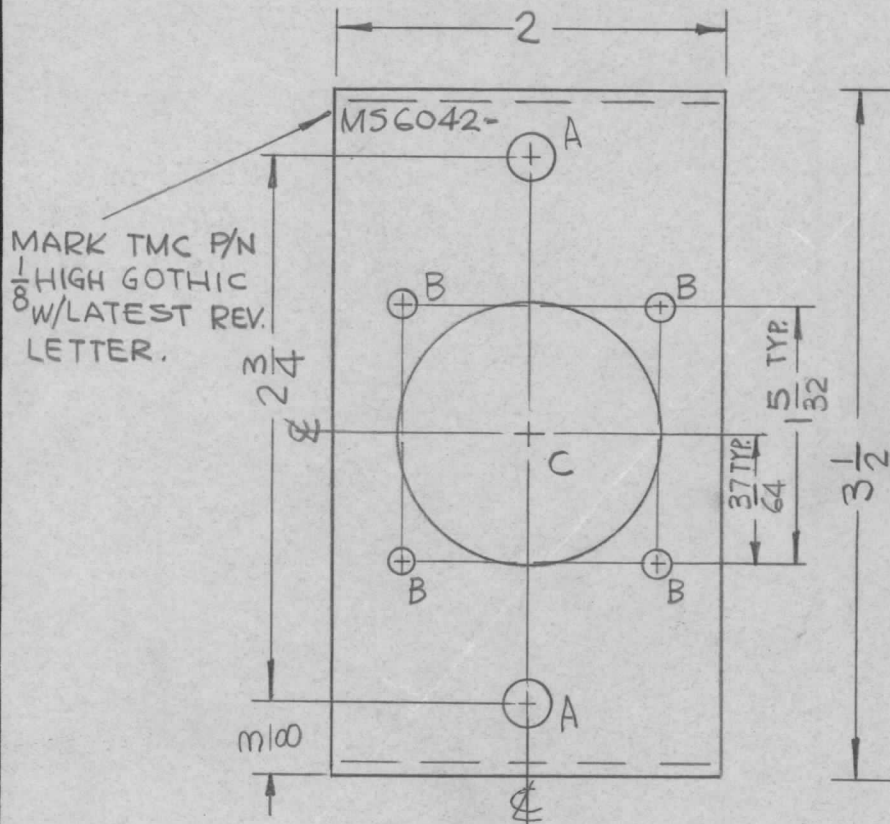


| | | | | |
|---------------|------------|------------|---------|----------|
| REQ. PER UNIT | USED ON | | | MSG042 Ø |
| | MODEL | ASS'Y. NO. | DATE | |
| 1 | RAK 110-2G | | 12-2-66 | |



UNLESS OTHERWISE SPECIFIED:

1. USE MATERIAL THICKNESS FOR MAXIMUM RADIUS ON ALL BENDS
2. ALL ANGULAR BENDS 90 DEGREES
3. REMOVE ALL BURRS AND SHARP EDGES

REF. LD1512

| REQ. ITEM | PART NO. | F. BUDETTI | DESCRIPTION | SYMBOL | | | | | | |
|-----------|---|---|--|----------|---------|-----------|--------------------|-----------------|-----------------|----------------|
| Ø | .081 THICK STOCK SIZE | | THE TECHNICAL MATERIEL CORP. MAMARONECK, NEW YORK | | | | | | | |
| X | ALUMINUM | | BRACKET, MTG. CONNECTOR | | | | | | | |
| SYM | DESCRIPTION | DATE | CH. NO. | DRAFTS | CHECKER | ENG. APP. | MATERIAL | DRAWN | CHECKED | FINAL APPROVAL |
| | UNLESS OTHERWISE SPECIFIED DIMENSIONS ARE IN INCHES AND INCLUDE CHEMICALLY APPLIED OR PLATED FINISHES | SCALE | 1:1 | | | | 5052-H32 | | | |
| | DECIMALS .X ± .05 .XX ± .01 .XXX ± .005 | FRACTIONS ± 1/64 ANGLES ± 0° 30' | CODE A | 5401-451 | | | S404 YEL IRIDITE | | | |
| | TOLERANCES | | | | | | FINISH & SPEC. NO. | ELEC. DES. APP. | MECH. DES. APP. | MSG042 Ø |