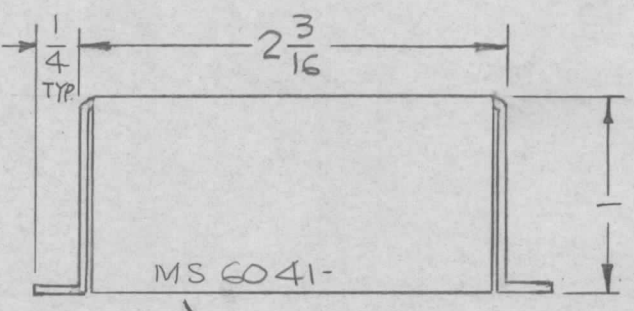
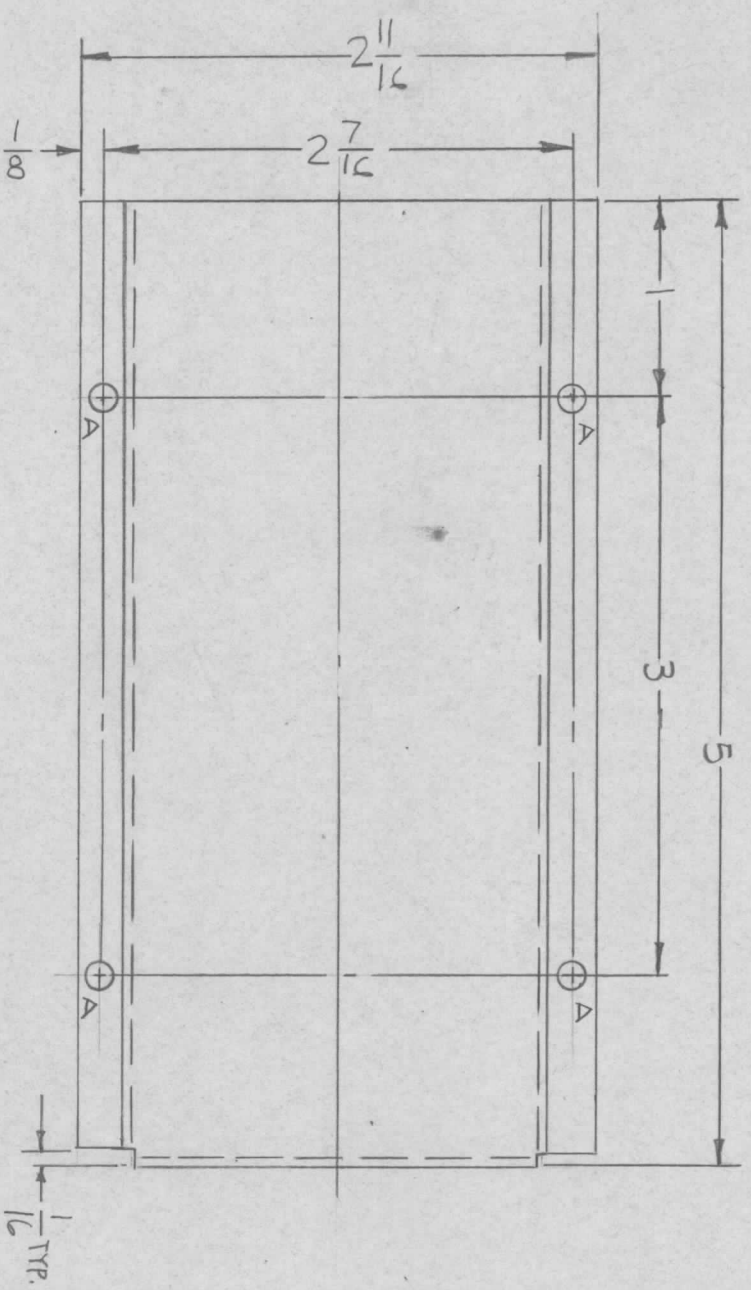


REVISIONS		DATE	E.M.N. NO.	DRAFT	CHKD	APPD
X	EXP. RELEASE	12-7-64				
XI	5520 ADDED, 5423 DEL.	12-8-64				
Ø	ORIG RELEASE FOR PRODUCTION	5-25-67		RG		

MS6041 Ø



HOLES:  
A-9/64 DIA. (4REQ.)

MARK TMC P/N  
1/8 HIGH GOTHIC  
W/LATEST REV.  
LETTER.

NOTE:  
APPLY 5520 (FINISH) ONLY OUTSIDE EDGES OF BOX.  
UNLESS OTHERWISE SPECIFIED:

1. USE MATERIAL THICKNESS FOR MAXIMUM RADIUS ON ALL BENDS
2. ALL ANGULAR BENDS 90 DEGREES
3. REMOVE ALL BURRS AND SHARP EDGES

NOTES

REQ'D.	ITEM	PART NUMBER	DESCRIPTION	SYMBOL
	F. BUDETTI		LIST OF MATERIAL	
MATERIAL		THE TECHNICAL MATERIEL CORP.		
.051 THICK ALUM.		MAMARONECK, NEW YORK		
5052-H32		SHIELD, BOX		
FINISH		TITLE		
5520 TEX. VINYL PAINT				
(SEE NOTE)				
UNLESS OTHERWISE SPECIFIED		DRAWN		
DIMENSIONS ARE IN INCHES AND INCLUDE		CHECKED		
CHEMICALLY APPLIED OR PLATED FINISHES		ELECT. DES.		
DECIMALS		MECH. DES.		
.X ± .05		DATE		
.XX ± .01		DATE		
.XXX ± .005		DATE		
FRACTIONS		FINAL APPROVAL		
± 1/64		DATE		
ANGLES		DATE		
± 0° 30'		SHEET		
		REV. LTR.		