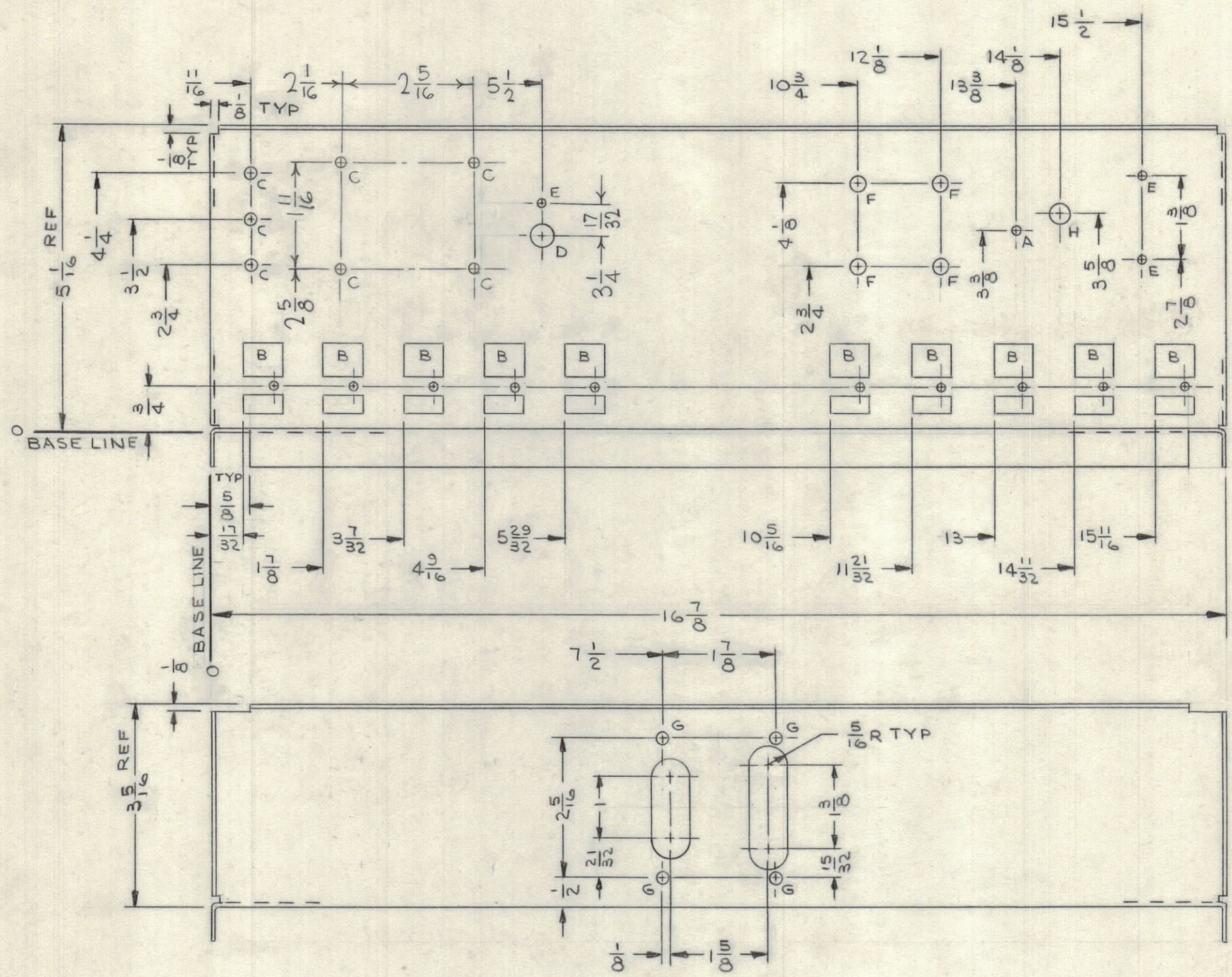
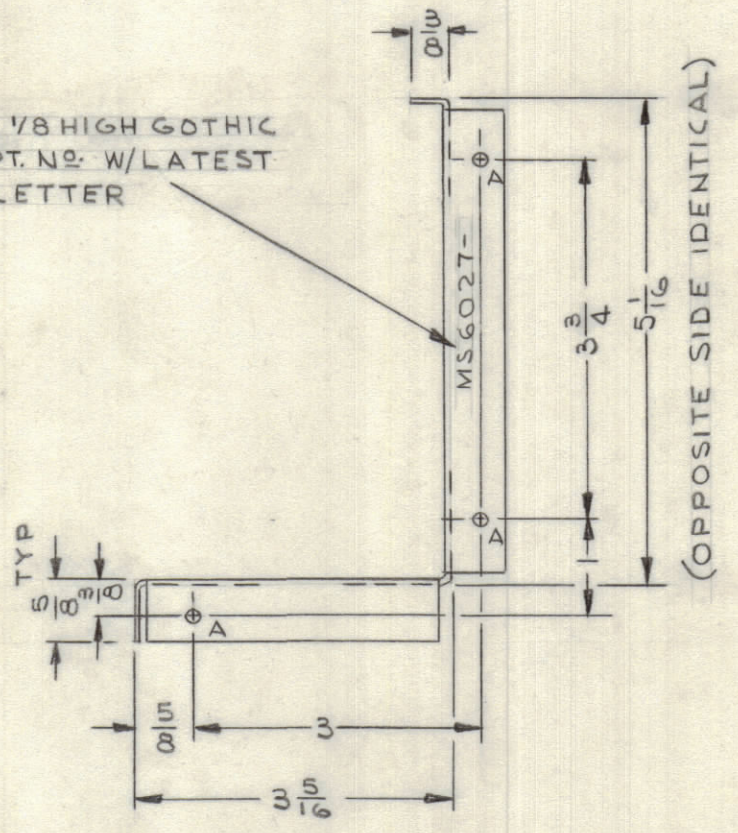


REVISIONS							
SYM	ZONE	DESCRIPTION	DATE	E.M.N. NO.	DRAFT	CHKD	APPD
X		EXP. RELEASE	11/14/66		JL		
XI	GC	4 "C" HOLES ADDED	12/3/66		Jc		
Ø		ORIGINAL RELEASE FOR PRODUCTION	12-19-66	Ø	RME		
A		DIM. 2-1/16 & 2-5/16 WERE 2-3/16, 1-11/16 WAS 1-3/4	4.13.67	18101	WLD	WLD	JLB



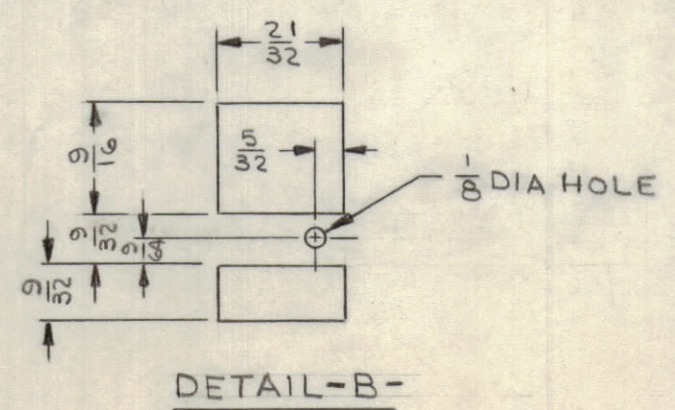
MARK 1/8 HIGH GOTHIC TMC PT. NO. W/LATEST REV. LETTER



HOLE LEGEND		
HOLE	DESCRIPTION	REQ
A	11/64 DIA	7
B	SEE DETAIL	10
C	9/64 DIA	7
D	3/8 DIA	1
E	1/8 DIA	3
F	9/32 DIA	4
G	13/64 DIA	4
H	5/16 DIA	1

UNLESS OTHERWISE SPECIFIED:

- USE MATERIAL THICKNESS FOR MAXIMUM RADIUS ON ALL BENDS
- ALL ANGULAR BENDS 90 DEGREES
- REMOVE ALL BURRS AND SHARP EDGES



MAXIMUM ALLOWABLE TOLERANCES HAVE BEEN DETERMINED AND ANY DEVIATIONS WILL BE CAUSE FOR REJECTION.

UNLESS OTHERWISE SPECIFIED DIMENSIONS ARE IN INCHES
 TOLERANCES ON FRACTIONS DECIMALS ANGLES
 ±1/64 ±.005 ±1/2°

MATERIAL
 .063 THK ALUMINUM
 5052-H32

FINISH
 YELLOW IRIDITE
 S404

REF. LD2188

QTY REQ	ITEM	PART NO.	DESCRIPTION	SYMBOL
	L. BUTLER		BILL OF MATERIAL	SK3254-6
THE TECHNICAL MATERIEL CORP. MAMARONECK, NEW YORK				
CHASSIS, ELEC, MAIN (KMCI-1)				
FINAL APPROVAL <i>LB</i> 10/11/66 MECH. DES. DATE 12/16/66 ELECT. DES. DATE 12-15-66		CHECKED <i>LB</i> DATE 11-29-66 DRAWN J. LESHINSKI DATE 11-14-66		
APPROVED FOR PURCHASING CONTRACT NO.		CODE 82679	SIZE C	DWG. NO. MS6027
		SCALE 1/2	ISSUE A	
			SHEET OF	