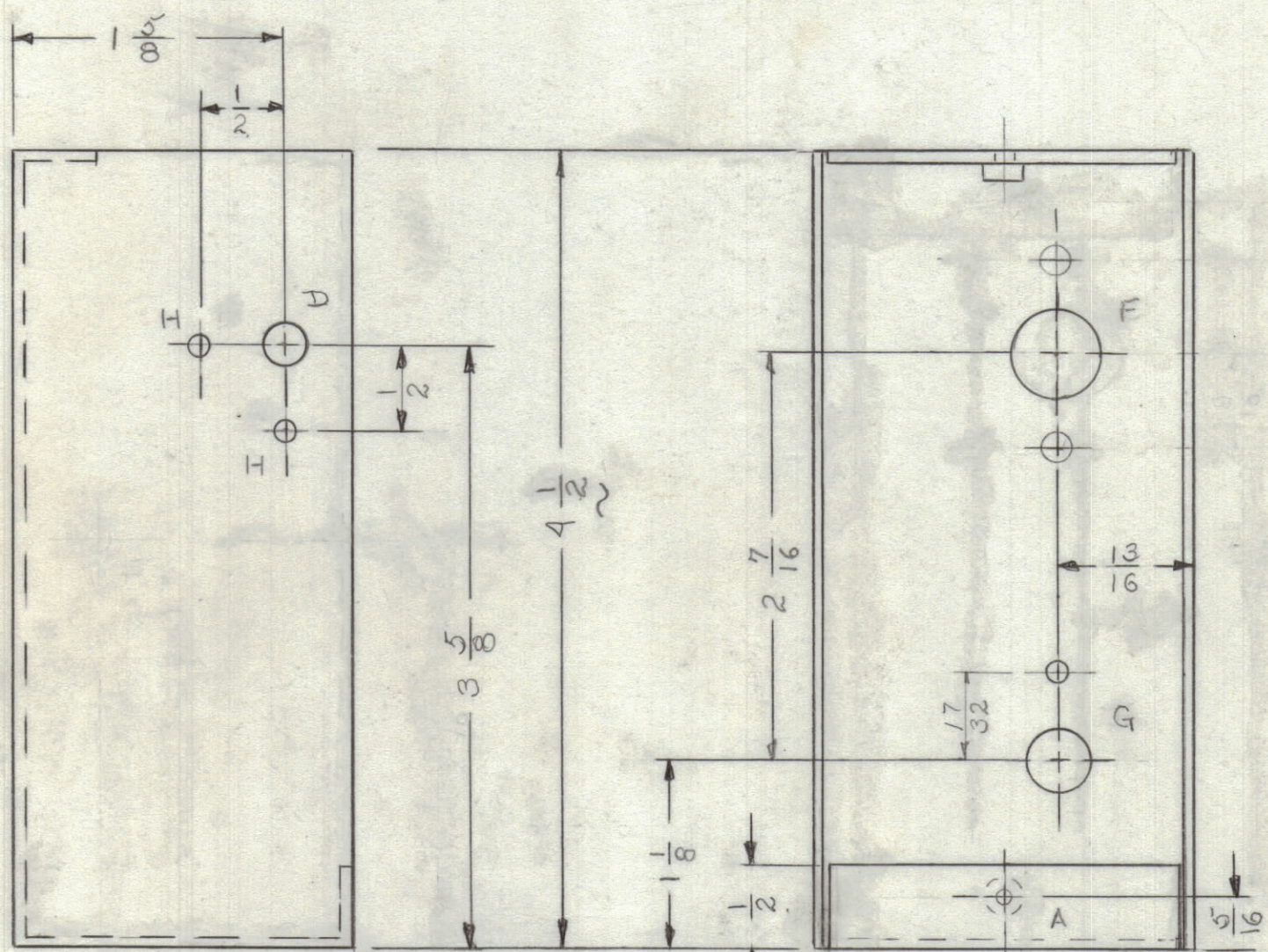
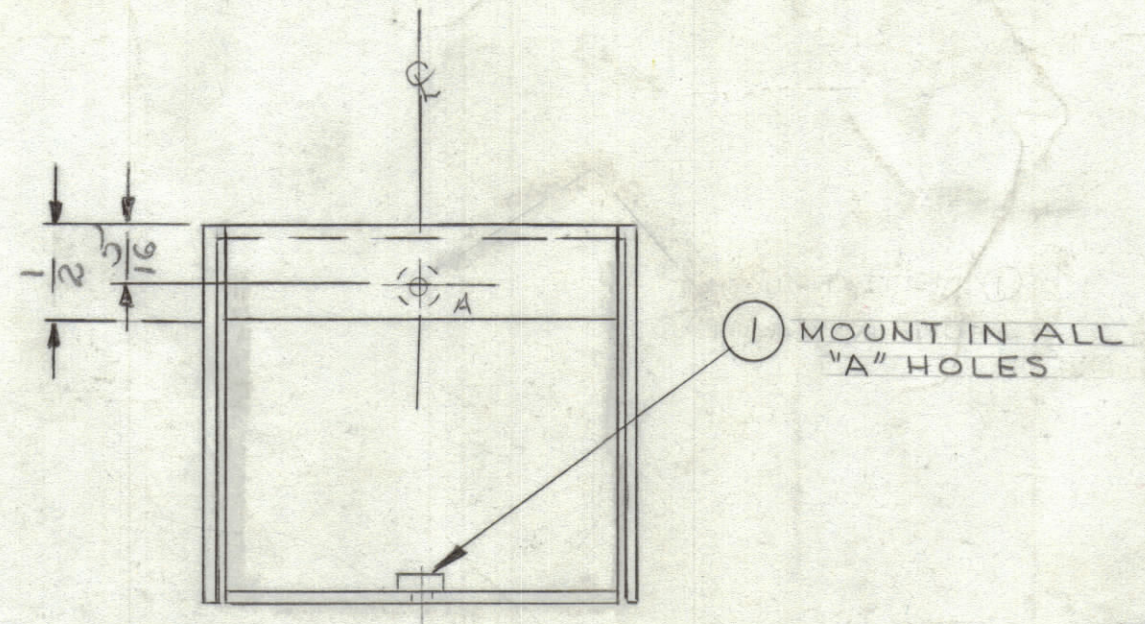
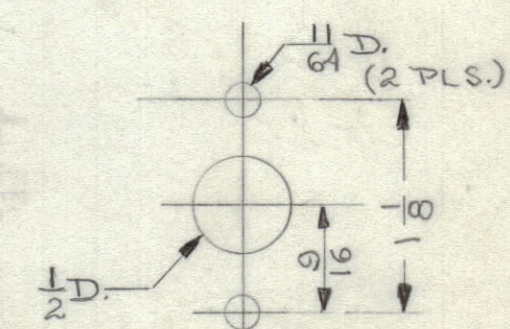


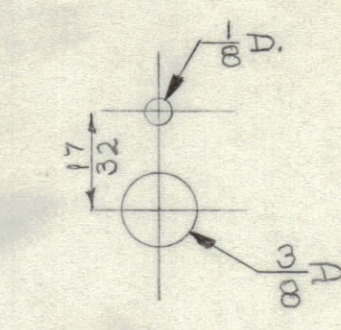
REVISIONS							
ZONE	SYM	DESCRIPTION	DATE	E.M.N. NO.	DRAFT	CHKD	APPD
X		EXP RELEASE	1/1/66			JL	
Ø		ORIGINAL RELEASE FOR PRODUCTION	11/10/66	Ø		RME	<i>pla</i>



MARK TMC PT. NO. W/LATEST REV. LETTER



DETAIL "F"



DETAIL "G"

MS6024

LEGEND		
HOLE	DESCRIPTION	REQ'D
A	.161-.164 DIA.	2
B	11/64 DIA.	2
C	5/32 DIA.	4
D	1/4 DIA.	1
E	9/64 DIA.	1
F	SEE DETAIL	1
G	SEE DETAIL	1
H	7/64 DIA.	2

- UNLESS OTHERWISE SPECIFIED:
1. USE MATERIAL THICKNESS FOR MAXIMUM RADIUS ON ALL BENDS
  2. ALL ANGULAR BENDS 90 DEGREES
  3. REMOVE ALL BURRS AND SHARP EDGES
  4. MOUNT INSERTS AFTER FINISHING

QTY./UNIT	MODEL USED ON	ASS'Y. NO.	QTY.	ITEM	PART NUMBER	DESCRIPTION	SYMBOL
	GPR-92B		2	1	NT129-440-4	NUT PLAIN SPLINE	A
LIST OF MATERIAL SK2300-13							
MATERIAL				THE TECHNICAL MATERIEL CORP.			
.063 ALUM. 5052 H32				MAMARONECK, NEW YORK			
FINISH				TITLE			
8404 YEL. IRIDITE				CHASSIS, FILTER			
DRAWN		DATE		FINAL APPROVAL		DATE	
<i>P.S.</i>		6-29-66		<i>[Signature]</i>		11/16/66	
CHECKED		DATE		ELECT. DES.		DATE	
<i>[Signature]</i>		11/8/66		<i>[Signature]</i>		MS6024	
MECH. DES.		DATE		SHEET		REV. LTR.	
<i>[Signature]</i>		1/8-66		1		Ø	

QTY./UNIT	MODEL USED ON	ASS'Y. NO.
SCALE	CODE	
1:1		

THE CONTENTS OF THIS DRAWING ARE THE EXCLUSIVE PROPERTY OF THE TECHNICAL MATERIEL CORP. ITS UNAUTHORIZED USE OR REPRODUCTION IN WHOLE OR IN PART IS STRICTLY FORBIDDEN.

NOTES

TMC FORM 110

REPROVAL NO. 440H 21539