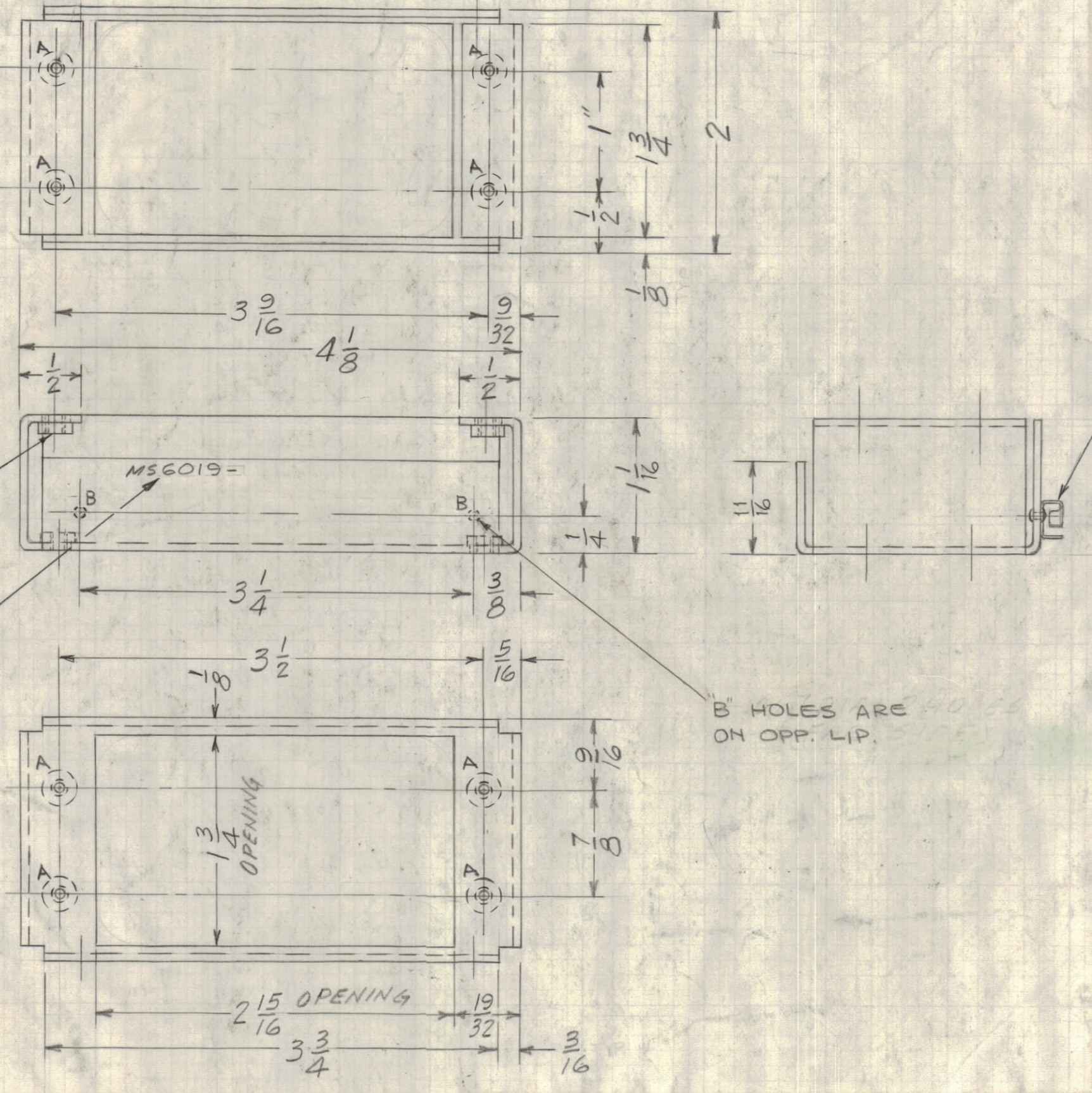


REVISIONS						
SYM	ZONE	DESCRIPTION	DATE	E.M.N. NO.	DRAFT	CHKD APPD
X		EXPERIMENTAL RELEASE	11/2/66	X	RME	
X1		CHGD DIMS 5/16 TO 1/4, 1-1/8 TO 1-1/16, 3/4 TO 11/16	12-8-66	X1	RME	
X2		REMOVED HFSR-4	11-10-67		HFS	
X3		SME-6 ADDED	1-2-69	X3	RG	
Ø		ORIGINAL RELEASE FOR PRODUCTION	1-2-69		RG	



1 MOUNT IN ALL "A" HOLES

2 MOUNT IN "B" HOLES

MARK 1/8" HIGH GOTHIC TMC PT. NO. W/LATEST REV. LETTER

"B" HOLES ARE ON OPP. LIP.

HOLE	DESCRIPTION	REQ.
A	.191-.194 DIA.	8
B	.067 DIA. (OPP. LIP)	2

- UNLESS OTHERWISE SPECIFIED:
- USE MATERIAL THICKNESS FOR MAXIMUM RADIUS ON ALL BENDS
  - ALL ANGULAR BENDS 90 DEGREES
  - REMOVE ALL BURRS AND SHARP EDGES
  - MOUNT IT. 1, 2, 3 AFTER FINISHING

QTY. REQ.	MODEL USED ON	ASSY. NO.
1	SME-6	BMA279
1	MMX-( )	BMA104
1	VOX-7	BMA109

MAXIMUM ALLOWABLE TOLERANCES HAVE BEEN DETERMINED AND ANY DEVIATIONS WILL BE CAUSE FOR REJECTION.

UNLESS OTHERWISE SPECIFIED DIMENSIONS ARE IN INCHES  
 TOLERANCES ON FRACTIONS DECIMALS ANGLES  
 ±1/64 ±.005 ±1/2°

MATERIAL  
 .051 THK. ALUMINUM  
 5052 -H32

FINISH  
 S404 YELLOW IRIDITE

QTY REQ	ITEM	PART NO.	DESCRIPTION	SYMBOL
2	3	EY100-5	EYELET, MTL.	B
1	2	CU157-4	RETAINER, PC. BOARD	B
8	1	NT129-0632-4	NUT, PLN, SPLINE	A

0. POSE. BILL OF MATERIAL REF, SK3213 - MS57

FINAL APPROVAL 1003 Jm	DATE 12-31-68
MECH. DES. C.A.B.	DATE 12-31-68
ELECT. DES.	DATE
CHECKED J.A.S.	DATE 4/29/68
DRAWN RME	DATE 11/21-66

THE TECHNICAL MATERIEL CORP.  
 MAMARONECK, NEW YORK

RECEPTACLE MTG BRACKET

APPROVED FOR DUSHIPS	CODE 82679	SIZE C	DWG. NO. MS6019	ISSUE Ø
CONTRACT NO. 3401-451	SCALE 1:1	SHEET   OF		