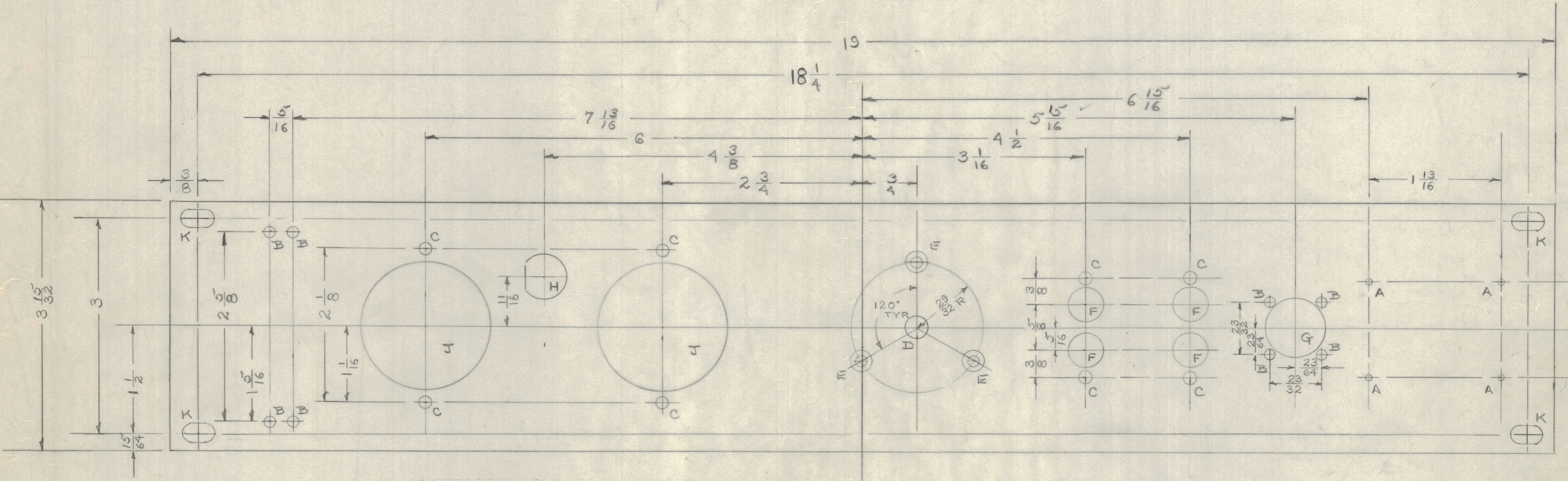
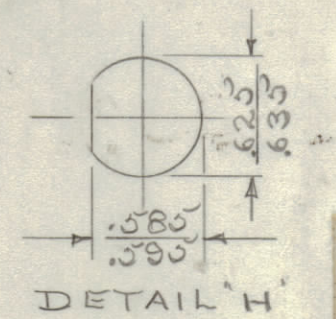


REVISIONS							
ZONE	SYM	DESCRIPTION	DATE	E.M.N. NO.	DRAFT	CHKD	APPD
	Ø	ORIGINAL RELEASE FOR PROD.	8/18/69	Ø	FS		JDe



HOLE	DESCRIPTION	REQ'D
A	#47 DRILL .078 DIA.	4
B	9/64 DIA.	8
C	11/64 DIA.	8
D	5/16 DIA.	1
E	.144 DIA C'SK 82° TO 284	3
F	15/32 DIA.	4
G	53/64 DIA.	1
H	SEE DETAIL	1
J	1 3/4 DIA.	2
K	1/4 X 29/64 SLOT	4



**MACHINING:**

1. MILL ALL EDGES.
2. HOLES MUST BE DRILLED, UNLESS OTHERWISE SPECIFIED.
3. LATERAL BOW OF PANEL MUST BE KEPT TO .031 TOLERANCE.
4. PANEL MUST BE FREE OF ALL MACHINING MARKS, GOUGES AND SCRATCHES. IF NECESSARY, SAND FRONT OF PANEL WITH NO. 120 GRIT SANDPAPER.

**FINISH NOTES:**

1. S404 - IRIDITE 14-2 AL-COAT.
2. S114 - ZINC CHROMATE PRIMER } FRONT AND
3. S115 - SMOOTH GRAY ENAMEL } EDGES ONLY

APP-15  
GPT 10K LFP

MODEL: GPT 10K LFP-1 (APP-15)

REF LD2183

REQ'D	ITEM	PART NUMBER	DESCRIPTION	SYMBOL
LIST OF MATERIAL (SK 3187-1)				
MATERIAL		THE TECHNICAL MATERIEL CORP.		
3/16 THK ALUMINUM		MAMARONECK, NEW YORK		
2024 T 3		TITLE		
FINISH		PANEL, FRONT		
SEE NOTE		DRAWN		
UNLESS OTHERWISE SPECIFIED		F. SIERZEGA		DATE
DIMENSIONS ARE IN INCHES AND INCLUDE		10-8-66		FINAL APPROVAL
CHEMICALLY APPLIED OR PLATED FINISHES		CHECKED		DATE
DECIMALS		ELECT. DES.		DATE
.X ± .05		MECH. DES.		DATE
.XX ± .01		TOLERANCES		DATE
.XXX ± .005		± 1/64		DATE
		ANGLES		DATE
		± 0° 30'		DATE
		SHEET		DATE
		MS6014		DATE
		REV. LTR.		DATE