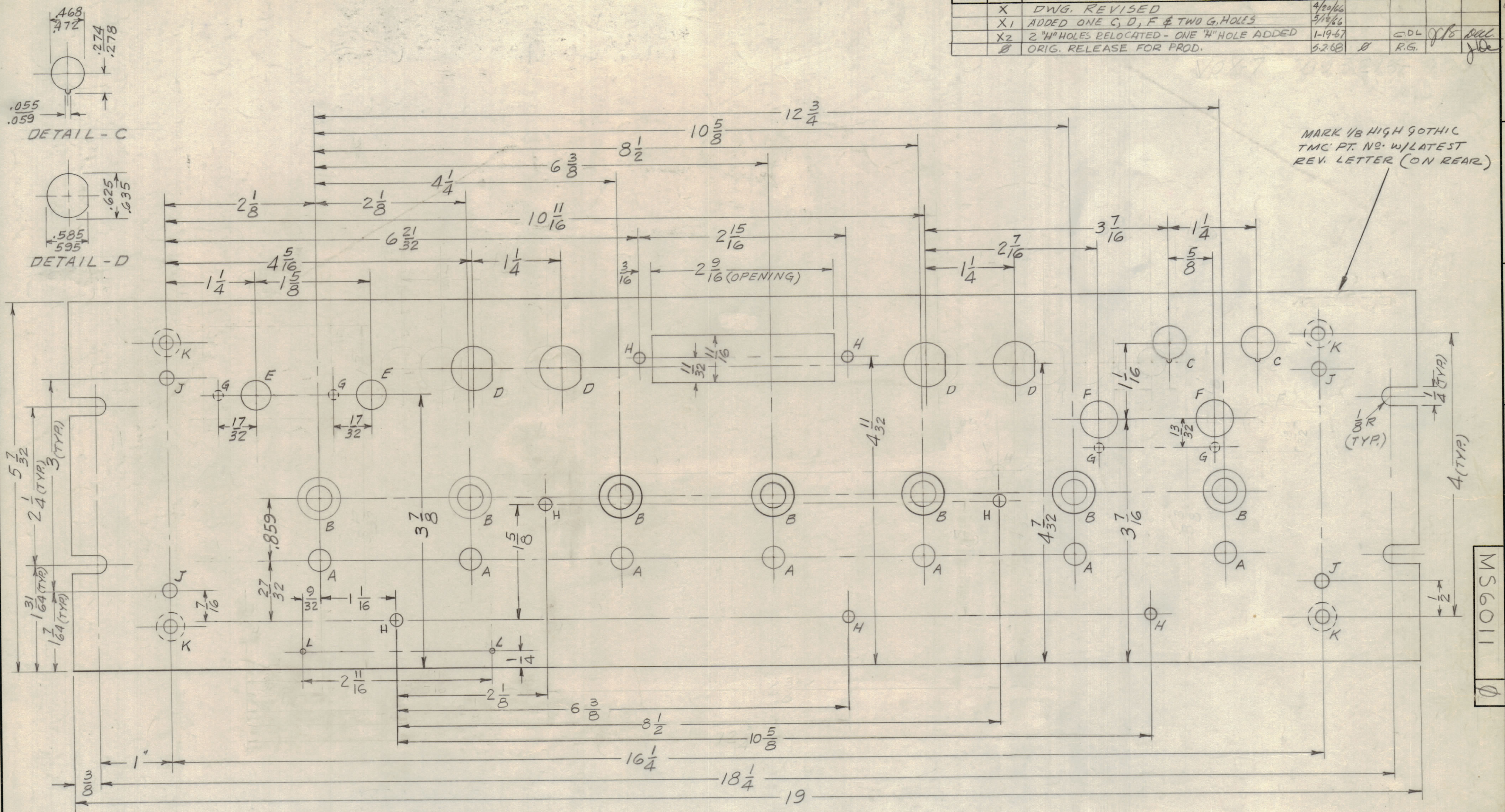


REVISIONS							
ZONE	SYM	DESCRIPTION	DATE	E.M.N. NO.	DRAFT	CHKD	APPD
	X	DWG. REVISED	4/20/66				
	X1	ADDED ONE C, D, F & TWO G HOLES	5/19/66				
	X2	2 "H" HOLES RELOCATED - ONE "H" HOLE ADDED	1-19-67		CDL	JTB	MSL
	Ø	ORIG. RELEASE FOR PROD.	5-2-68		R.G.		JTB



HOLE LEGEND		
HOLE	DESCRIPTION	REQ.
A	5/16 DIA.	7
B	11/32 DIA. & 82° C'SINK TO 19/32 DIA. FACE ON FRONT	7
C	SEE DETAIL	2
D	SEE DETAIL	4
E	13/32 DIA.	2
F	1/2 DIA.	2
G	9/64 DIA. x 3/32 DEEP ON REAR	4
H	11/64 DIA.	7
J	13/64 DIA.	4
K	.196 DIA. & 82° C'SINK TO .390 DIA. FACE ON REAR	4
L	.076 DIA.	2

**MACHINING:**

- MILL ALL EDGES.
- HOLES MUST BE DRILLED, UNLESS OTHERWISE SPECIFIED.
- LATERAL BOW OF PANEL MUST BE KEPT TO .031 TOLERANCE.
- PANEL MUST BE FREE OF ALL MACHINING MARKS, GOUGES AND SCRATCHES. IF NECESSARY, SAND FRONT OF PANEL WITH NO. 120 GRIT SANDPAPER.

**FINISH NOTES:**

- S404 - IRIDITE 14-2 AL-COAT.
- S114 - ZINC CHROMATE PRIMER } FRONT AND
- S115 - SMOOTH GRAY ENAMEL } EDGES ONLY

OR  
PRIME AND PAINT PER CUSTOMER'S SPECIFICATIONS.

REF. LD2180

REQ'D.	ITEM	PART NUMBER	DESCRIPTION	SYMBOL
	O. POSE..		LIST OF MATERIAL	SK3213M520
MATERIAL		3/16 ALUMINUM 2024-T3	THE TECHNICAL MATERIEL CORP. MAMARONECK, NEW YORK	
FINISH		SEE FINISH NOTES	TITLE PANEL, FRONT	
UNLESS OTHERWISE SPECIFIED DIMENSIONS ARE IN INCHES AND INCLUDE CHEMICALLY APPLIED OR PLATED FINISHES		DRAWN D. A. C. DATE 4-20-66 FINAL APPROVAL [Signature] DATE		
DECIMALS .X ± .05 .XX ± .01 .XXX ± .005		TOLERANCES ± 1/64 ANGLES ± 0° 30'		
SCALE 1/1		ELECT. DES. [Signature] DATE 5/2/68 MECH. DES. [Signature] DATE 5-2-68		
THE CONTENTS OF THIS DRAWING ARE THE EXCLUSIVE PROPERTY OF THE TECHNICAL MATERIEL CORP. ITS UNAUTHORIZED USE OR REPRODUCTION IN WHOLE OR IN PART IS STRICTLY FORBIDDEN.		MS6011		
NOTES		SHEET		
		REV. LTR.		

MS6011