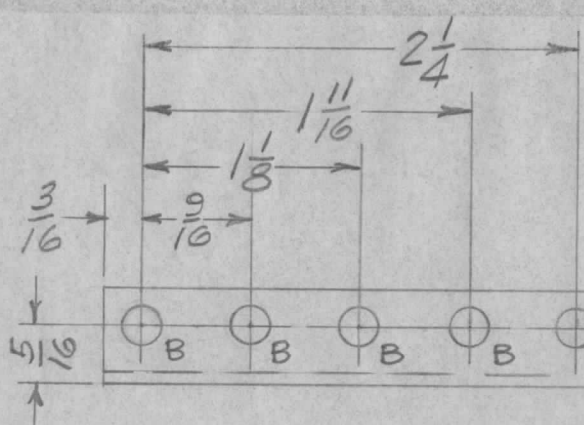


REQ. PER UNIT	USED ON		
	MODEL	ASS'Y. NO.	DATE
1	MMX-1	A4525	

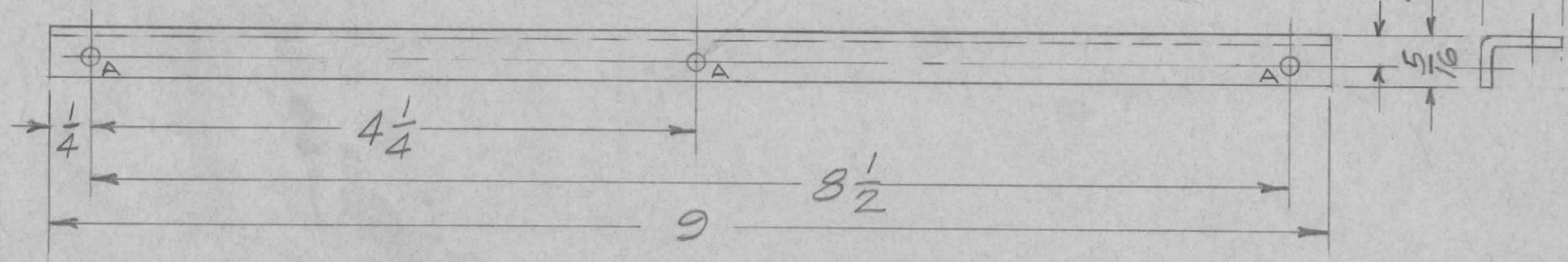
MSG005 Ø



HOLES
 A $\frac{1}{8}$ DIA — 3
 B $\frac{7}{32}$ DIA — 5

- UNLESS OTHERWISE SPECIFIED:
1. USE MATERIAL THICKNESS FOR MAXIMUM RADIUS ON ALL BENDS
 2. ALL ANGULAR BENDS 90 DEGREES
 3. REMOVE ALL BURRS AND SHARP EDGES

MSG005-
 MARK $\frac{1}{8}$ HIGH GOTHIC
 TMC PT. NO. w/LATEST
 REV. LETTER



REF: LD3095

								REQ. ITEM	PART NO.	O. POSE	DESCRIPTION	SK3246-13	SYMBOL	
A	REF: LD3095 Added	11-11-77	21594	KP	<i>[Signature]</i>	*			.063 TK.		THE TECHNICAL MATERIEL CORP. MAMARONECK, NEW YORK			
Ø	ORIG. RELEASE FOR PROD	6-26-67	Ø	RG	<i>[Signature]</i>				STOCK SIZE		STIFFENER, PC BOARD (SPECIAL)			
X	EXP. RELEASE	11/3/66		JL	<i>[Signature]</i>				ALUMINUM					
ISSUE	ITEM	CHANGED FROM	DATE	CH. NO.	DRAFTS	CHECKER	ENG. APP.	MATERIAL						
TOLERANCES			SCALE: 5401-451					5052-H32	G.I.D.L.	<i>[Signature]</i>	<i>[Signature]</i>	FINAL APPROVAL		
DEC. DIM. ± FRAC. DIM. ± ANGULAR DIM. ±			MAXIMUM ALLOWABLE TOLERANCES HAVE BEEN DETERMINED AND ANY DEVIATIONS WILL BE CAUSE FOR REJECTION. REMOVE ALL BURRS AND SHARP EDGES					5404 YEL. IRIDITE	TYPE & TEMPER	HEAT TREAT. SPEC.	DRAWN	CHECKED	MECH. DES. APP.	
									FINISH & SPEC. NO.	ELEC. DES. APP.	MECH. DES. APP.	MSG005	A	