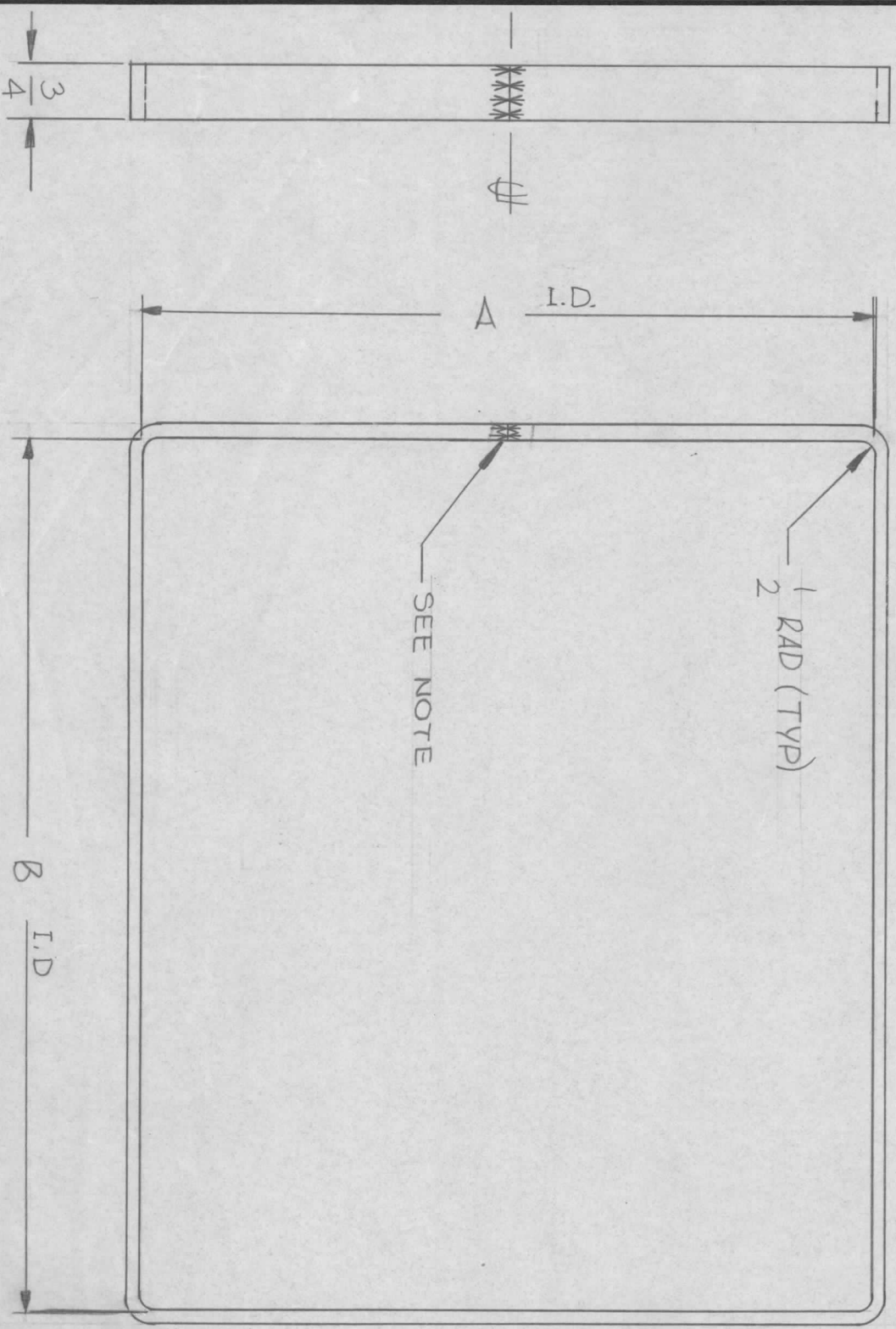


TMC PART/No.	A $\pm \frac{1}{64}$	B $\pm \frac{1}{64}$
MS6001-1	12 3/16	12 3/16
MS6001-2	12 2/32	12 2/32



REVISIONS		DATE	E.M.N. NO.	DRAFT	CHKD	APPD
SYM	DESCRIPTION					
Ø	ORIGINAL RELEASE FOR PRODUCTION	8/29/67	Ø	RG	AD	

Q'TY./UNIT	MODEL USED ON	ASS'Y. NO.
1 EACH	TRC20K	A2239
SCALE	CODE	

UNLESS OTHERWISE SPECIFIED DIMENSIONS ARE IN INCHES AND INCLUDE CHEMICALLY APPLIED OR PLATED FINISHES		DRAWN <i>WJG</i>		DATE	FINAL APPROVAL	DATE
DECIMALS	TOLERANCES	FRACTIONS	CHECKED	9/29/66	<i>[Signature]</i>	8-30-67
.X ± .05		± 1/64	ELECT. DES.			
.XX ± .01		ANGLES	MECH. DES.			
.XXX ± .005		± 0° 30'				

REQ'D.	ITEM	PART NUMBER	DESCRIPTION	SYMBOL
	MATERIAL		3/16 THICK ALUMINUM, 1100-H14	
	FINISH		NONE	

LIST OF MATERIAL

THE TECHNICAL MATERIEL CORP.  
MAMARONECK, NEW YORK

~ NOTE ~  
SEAM WELD AND GRIND SMOOTH

REF: PX641

NOTES