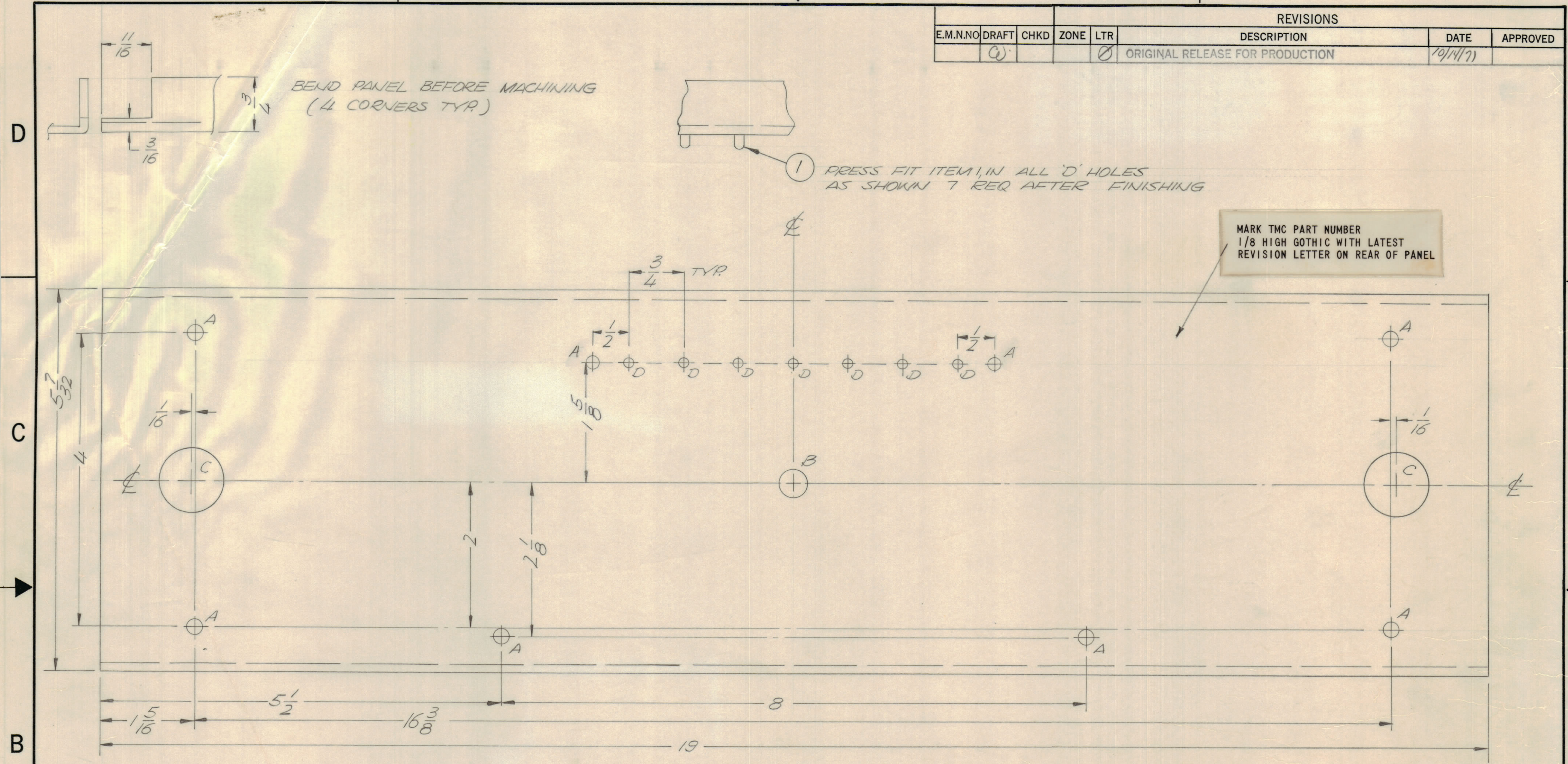


REVISIONS							
E.M.N.NO	DRAFT	CHKD	ZONE	LTR	DESCRIPTION	DATE	APPROVED
	Q			Ø	ORIGINAL RELEASE FOR PRODUCTION	10/14/71	



HOLE	DESCRIPTION	QTY.
A	11/64 DIA.	8
B	3/8 DIA.	1
C	7/8 DIA.	2
D	.123 DIA.	7
E		

UNLESS OTHERWISE SPECIFIED:

- USE MATERIAL THICKNESS FOR MAXIMUM RADIUS ON ALL BENDS.
- ALL ANGULAR BENDS 90 DEGREES.
- REMOVE ALL BURRS AND SHARP EDGES.
- MOUNT INSERTS AFTER FINISHING.

FINISH NOTES:

- S404 - IRIDITE 14-2 AL-COAT.
- S114 - ZINC CHROMATE PRIMER } FRONT AND EDGES ONLY
- S115 - SMOOTH GRAY ENAMEL } OR PRIME AND PAINT PER CUSTOMER'S SPECIFICATIONS

QTY / UNIT	MODEL USED ON	ASS'Y NO.
1	TFD 1K	
APPLICATION		
CODE		

NOTICE TO PERSONS RECEIVING THIS DRAWING
 THE TECHNICAL MATERIEL CORPORATION claims proprietary right in the material disclosed hereon. This drawing is issued in confidence for engineering information only and may not be reproduced or used to manufacture anything shown hereon without permission from THE TECHNICAL MATERIEL CORPORATION to the user. This drawing is loaned for mutual assistance and is subject to recall at any time.

REF. LD 2464

UNLESS OTHERWISE SPECIFIED DIMENSIONS ARE IN INCHES AND INCLUDE CHEMICALLY APPLIED OR PLATED FINISHES

TOLERANCES ON

DECIMALS	FRACTIONS
.X ± .05	± 1/64
.XX ± .01	ANGLES
.XXX ± .005	± 0° -30'

MATERIAL 1/8 ALUM.
5052 H.32

FINISH
AS NOTED

QTY. REQ.	ITEM	PART NO.	DESCRIPTION	SYMBOL
7	1	PX 998	ILLUMINATOR BAND	

F. BUDETTI

FINAL APPROVAL [Signature] DATE 23/5/71

MECH. DES. [Signature] DATE 3/16/71

ELECT. DES. DATE

CHECKED DATE

DRAWN GE DATE 2/25/71

THE TECHNICAL MATERIEL CORP.
MAMARONECK, NEW YORK

PANEL FRONT

SIZE	CODE	IDENT NO.	DWG NO.	ISSUE
C		82679	MS 5993	Ø

SCALE 1:1 SHEET OF