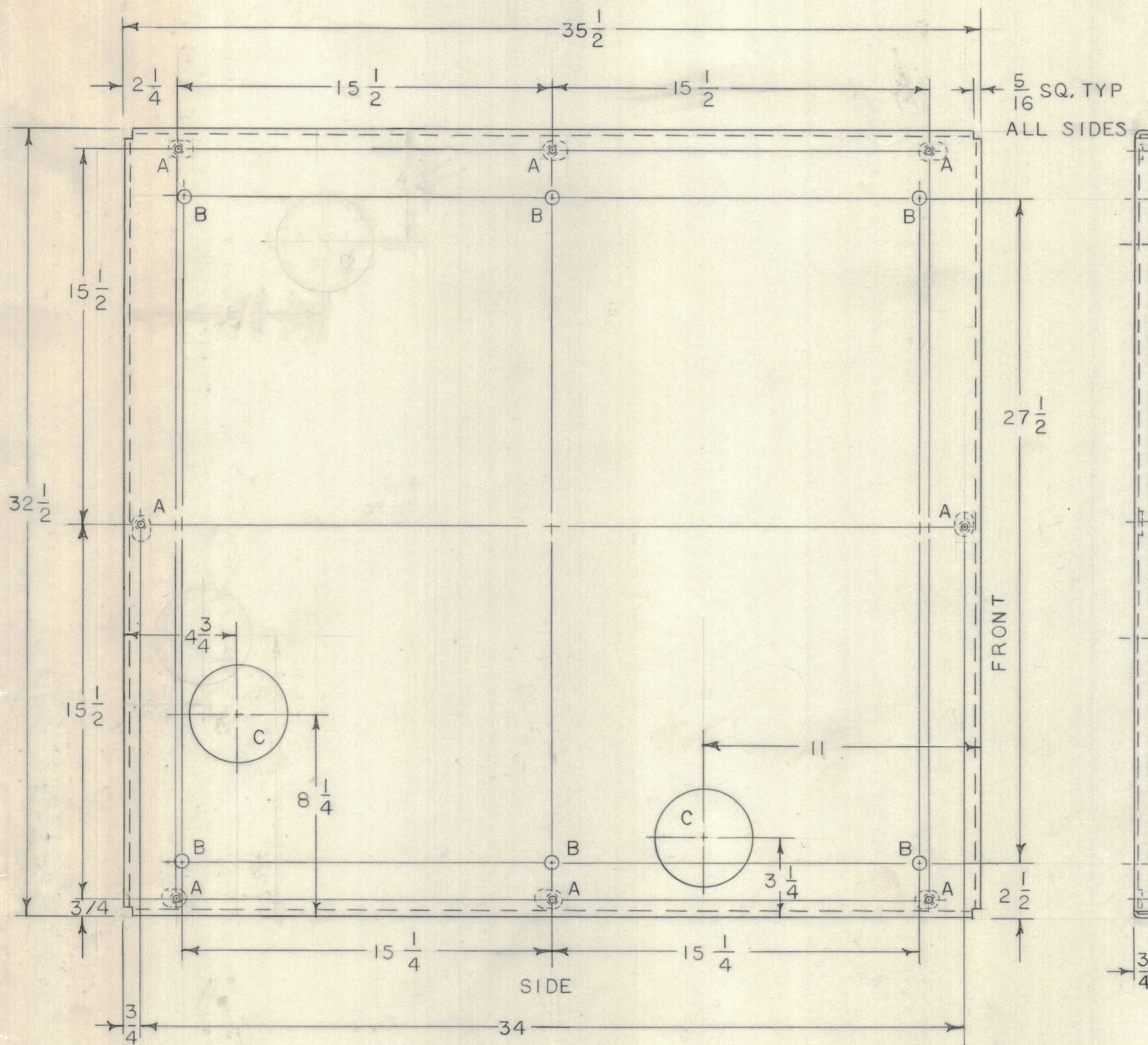


REVISIONS							
E.M.N.O	DRAFT	CHKD	ZONE	LTR	DESCRIPTION	DATE	APPROVED
	RF			X	EXP RELEASE	5-12-71	
	CO			Ø	ORIGINAL RELEASE FOR PRODUCTION	1/2/72	



HOLE	DESCRIPTION	REQD
A	1/4 DIA (SEE ITEM 1)	8
B	9/16 DIA	6
C	4 DIA	2

- NOTES:
- UNLESS OTHERWISE SPECIFIED:
- USE MATERIAL THICKNESS FOR MAXIMUM RADIUS ON ALL BENDS.
  - ALL ANGULAR BENDS 90 DEGREES.
  - REMOVE ALL BURRS AND SHARP EDGES.
  - MOUNT INSERTS AFTER FINISHING.
  - POSITION BROADSIDE TO METAL, RETURN DIRECTION OPPTIONAL,

QTY. REQ.	ITEM	PART NO.	DESCRIPTION	SYMBOL
8	1	1/4-20	NUT, WELD	A

LIST OF MATERIAL				
FINAL APPROVAL		DATE		
MECH. DES.		DATE		
ELECT. DES.		DATE		
CHECKED		DATE		
DRAWN		DATE		
R. FORLANO		5-12-71		
<b>THE TECHNICAL MATERIEL CORP.</b> MAMARONECK, NEW YORK				
PAD, XMTR. MTG.				
SIZE	CODE	IDENT NO.	DWG NO.	ISSUE
C	82679		MS 5984	Ø
SCALE 1/4		SHEET 1 OF 1		

QTY / UNIT	MODEL USED ON	ASS'Y NO.
1	KIT370(BCT-IOKA)	BMA 466
APPLICATION		
CODE		
<small>NOTICE TO PERSONS RECEIVING THIS DRAWING</small> <small>THE TECHNICAL MATERIEL CORPORATION claims proprietary right in the material disclosed hereon. This drawing is issued in confidence for engineering information only and may not be reproduced or used to manufacture anything shown hereon without permission from THE TECHNICAL MATERIEL CORPORATION to the user. This drawing is loaned for mutual assistance and is subject to recall at any time.</small>		

UNLESS OTHERWISE SPECIFIED DIMENSIONS ARE IN INCHES AND INCLUDE CHEMICALLY APPLIED OR PLATED FINISHES

TOLERANCES ON

DECIMALS	FRACTIONS
.X ± .05	± 1/64
.XX ± .01	ANGLES
.XXX ± .005	± 0° -30'

MATERIAL  
11 GA. C.R.S.

FINISH S220  
TMC BLUE-GREY