

4

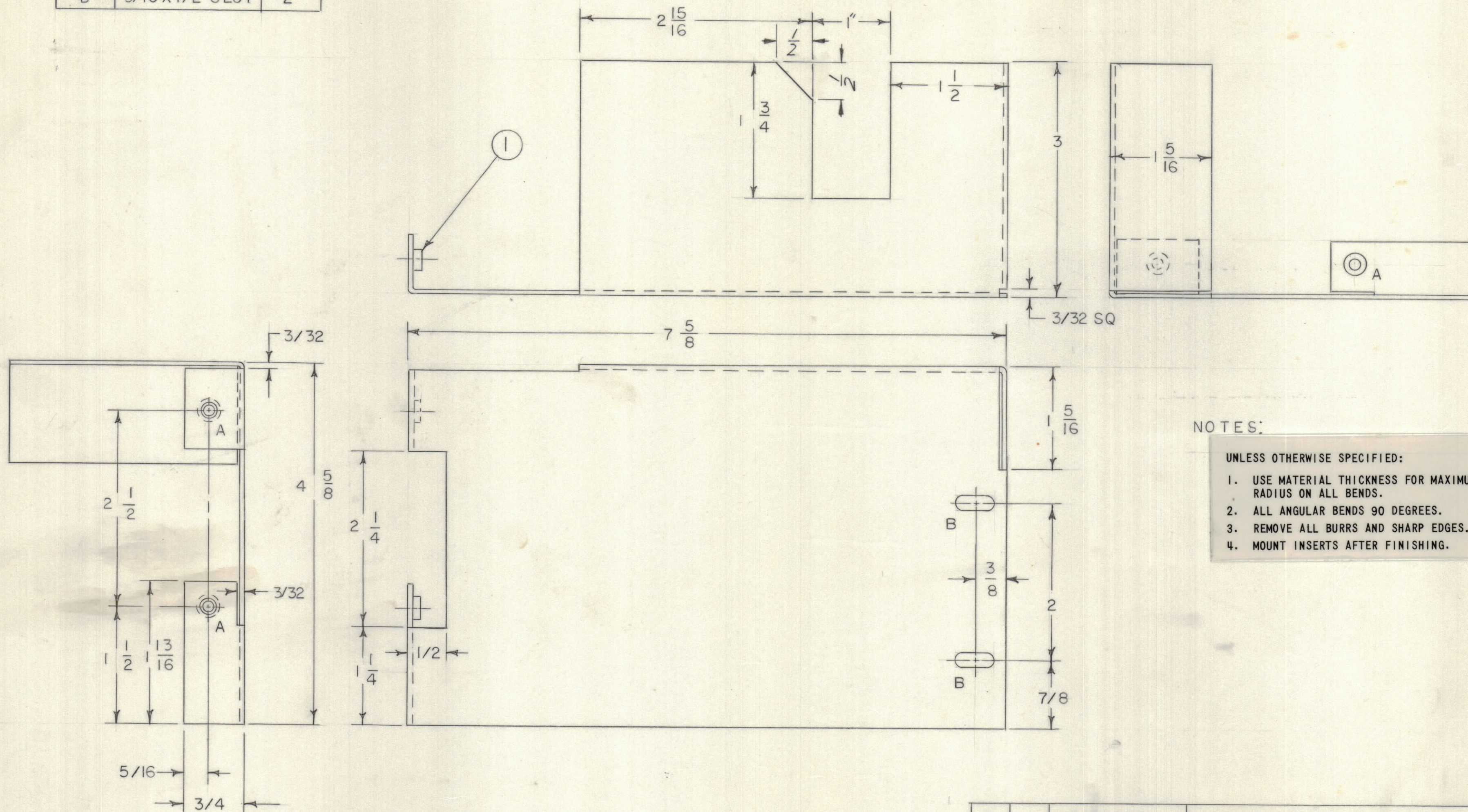
3

2

1

					REVISIONS		
E.M.N.NO	DRAFT	CHKD	ZONE	LTR	DESCRIPTION	DATE	APPROVED
	RF			X	EXP RELEASE	4-31-71	
	(D)			Ø	ORIGINAL RELEASE FOR PRODUCTION	6/21/71	P.E.B.
20615	GE	eg		A	ADDED 1/2 X 1/2 NOTCH CUTOUT	4/26/72	eg

HOLE	DESCRIPTION	REQD
A	.191-.194 DIA	2
B	3/16 X 1/2 SLOT	2



NOTES:

UNLESS OTHERWISE SPECIFIED:

1. USE MATERIAL THICKNESS FOR MAXIMUM RADIUS ON ALL BENDS.
2. ALL ANGULAR BENDS 90 DEGREES.
3. REMOVE ALL BURRS AND SHARP EDGES.
4. MOUNT INSERTS AFTER FINISHING.

MS5973 A B

QTY. REQ.	ITEM	PART NO.	DESCRIPTION	SYMBOL
2	1	NT129-632-3	NUT, ROUND, SWAGE TYPE	A

F. BUDETTI				LIST OF MATERIAL	
FINAL APPROVAL	DATE	THE TECHNICAL MATERIEL CORP. MAMARONECK, NEW YORK COVER, SHIELDING (LEFT SIDE)			
MECH. DES.	DATE				
ELECT. DES.	DATE				
CHECKED	DATE				
DRAWN	DATE				

QTY / UNIT	MODEL USED ON	ASS'Y NO.
1	TLAA-1K	BMA 457
APPLICATION		
CODE		
<small>NOTICE TO PERSONS RECEIVING THIS DRAWING</small> <small>THE TECHNICAL MATERIEL CORPORATION claims proprietary right in the material disclosed hereon. This drawing is issued in confidence for engineering information only and may not be reproduced or used to manufacture anything shown hereon without permission from THE TECHNICAL MATERIEL CORPORATION to the user. This drawing is loaned for mutual assistance and is subject to recall at any time.</small>		

UNLESS OTHERWISE SPECIFIED DIMENSIONS ARE IN INCHES AND INCLUDE CHEMICALLY APPLIED OR PLATED FINISHES

TOLERANCES ON

DECIMALS	FRACTIONS
.X ± .05	± 1/64
.XX ± .01	ANGLES
.XXX ± .005	± 0° -30'

MATERIAL .051 THK.
ALUM 5052 H 32

FINISH S404
YEL IRIDITE

SIZE	CODE IDENT NO.	DWG NO.	ISSUE
C	82679	MS5973	A
SCALE 1/1		SHEET 1 OF 1	

4

3

2

1