

REVISIONS

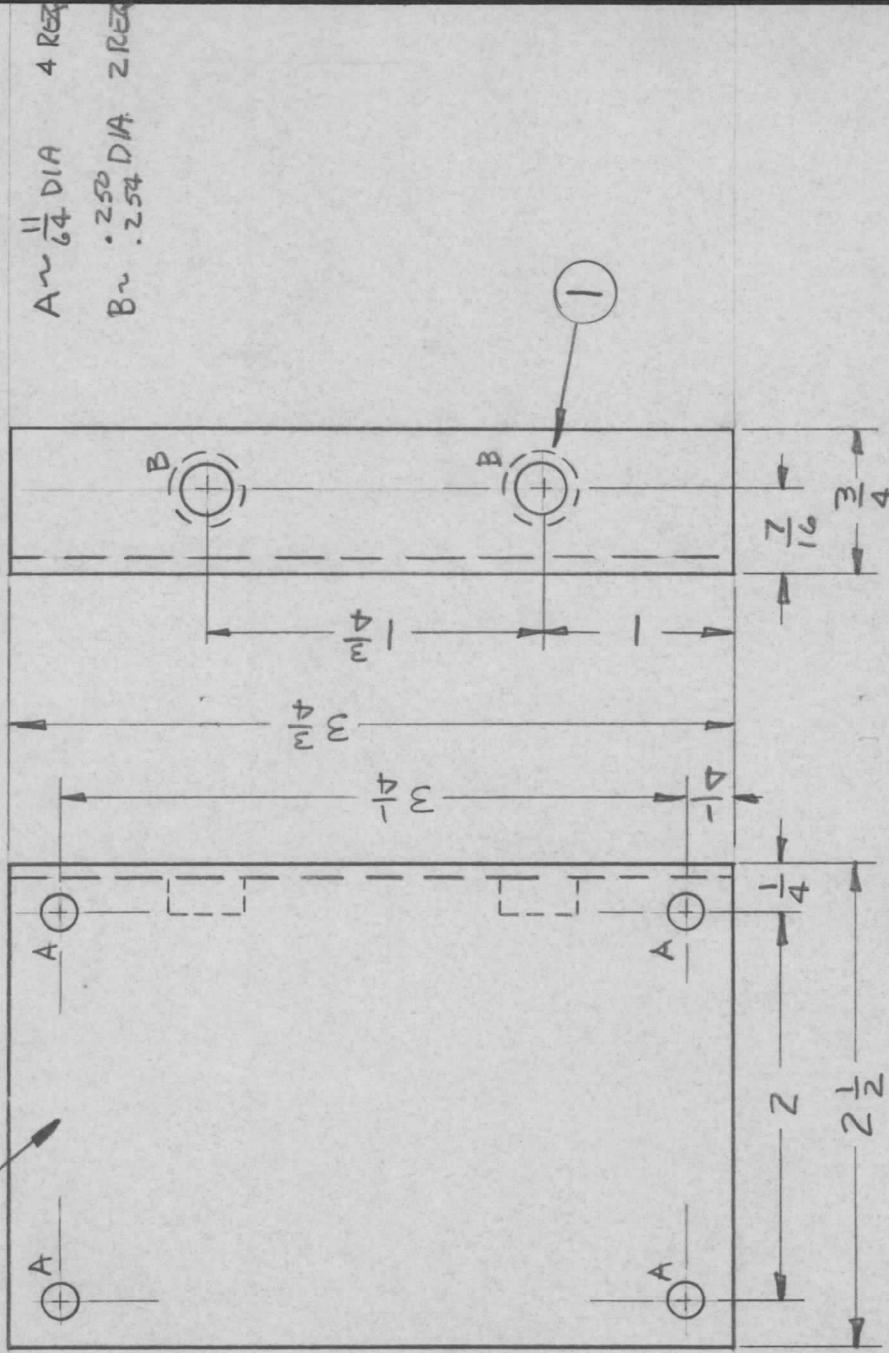
APPLICATION

| | | | | | | | | | |
|-----|---------------|-----------|-----|-----------------------|--------|----------|-------|------|------|
| QTY | MODEL USED ON | ASS'Y NO. | LTR | DESCRIPTION | DATE | E.M.N.NO | DRAFT | CHKD | APPD |
| 6 | HFTA-1KJ | RAK137 | Ø | ORIG RELEASE FOR PROD | 4/8/71 | | W | | PEB |

UNLESS OTHERWISE SPECIFIED:

1. USE MATERIAL THICKNESS FOR MAXIMUM RADIUS ON ALL BENDS.
2. ALL ANGULAR BENDS 90 DEGREES.
3. REMOVE ALL BURRS AND SHARP EDGES.
4. MOUNT INSERTS AFTER FINISHING.

MARK TMC PART NUMBER
1/8 HIGH GOTHIC WITH LATEST
REVISION LETTER



| | | | | | | | | | |
|---|--|----------------|--|--------------|--|------------------------------|--|------|--|
| UNLESS OTHERWISE SPECIFIED DIMENSIONS ARE IN INCHES AND INCLUDE CHEMICALLY APPLIED OR PLATED FINISHES | | REQ'D ITEM | | PART NUMBER | | DESCRIPTION | | SYM. | |
| DECIMALS .X ± .05 .XX ± .01 .XXX ± .005 | | Z 1 | | NT129-1032-4 | | NUT, PLW, SPLINE | | | |
| FRACTIONS 1/64 | | BUDETTI | | | | LIST OF MATERIAL | | | |
| TOLS. 0°-30° | | FINAL APPROVAL | | DATE | | THE TECHNICAL MATERIEL CORP. | | | |
| MATERIAL .064 | | MECH. DES. | | 8/27/71 | | MAMARONECK, NEW YORK | | | |
| ALUM, 5052-H32 | | ELECT. DES. | | 8/27/71 | | BRACKET, RETRACTOR MT6 | | | |
| FINISH | | CHECKED | | | | | | | |
| S404 YEL 1R1D | | DRAWN | | 7/19/71 | | | | | |

NOTICE TO PERSONS RECEIVING THIS DRAWING
THE TECHNICAL MATERIEL CORPORATION claims proprietary right in the material disclosed hereon. This drawing is issued in confidence for engineering information only and may not be reproduced or used to manufacture anything shown hereon without permission from THE TECHNICAL MATERIEL CORPORATION to the user. This drawing is loaned for mutual assistance and is subject to recall at any time.

| | | | |
|-------|-----------------|---------|-------|
| SIZE | CODE IDENT. NO. | DWG NO. | ISSUE |
| A | 82679 | MS5965 | Ø |
| SCALE | SHEET | OF | |