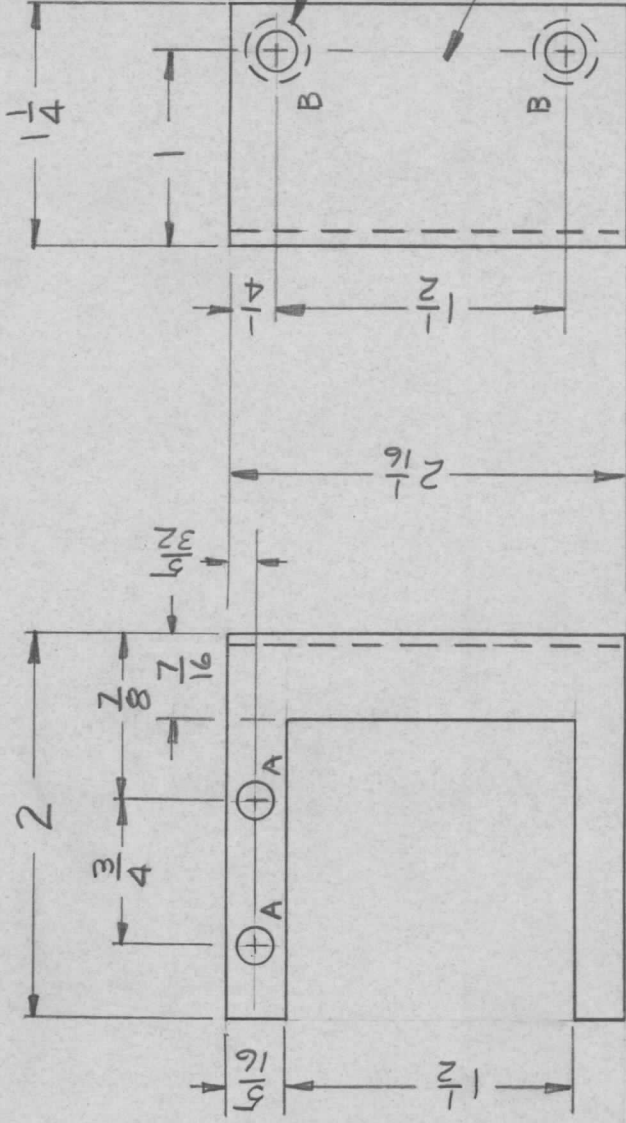


APPLICATION		REVISIONS							
QTY	MODEL USED ON	ASS'Y NO.	LTR	DESCRIPTION	DATE	E.M.N.NO	DRAFT	CHKD	APPD
1	HFLA-1K	AP151	Ø	ORIGINAL RELEASE	5/27/71		aw		B3A



A ~ 1/64 D 2 REQ

B ~ .191-.194 D 2 REQ

**UNLESS OTHERWISE SPECIFIED:**

1. USE MATERIAL THICKNESS FOR MAXIMUM RADIUS ON ALL BENDS.
2. ALL ANGULAR BENDS 90 DEGREES.
3. REMOVE ALL BURRS AND SHARP EDGES.
4. MOUNT INSERTS AFTER FINISHING.

UNLESS OTHERWISE SPECIFIED DIMENSIONS ARE IN INCHES AND INCLUDE CHEMICALLY APPLIED OR PLATED FINISHES	REQ'D ITEM	PART NUMBER	DESCRIPTION	SYM.
DECIMALS .X ± .05 .XX ± .01 .XXX ± .005	2	1	NT129-0632-3	B
FRACTIONS 1/64	BUDETTI			
TOLS. ANGLES 0°-30'	FINAL APPROVAL	DATE	LIST OF MATERIAL	
MATERIAL .051	<i>[Signature]</i>	15 May 71	THE TECHNICAL MATERIEL CORP.	
ALUM 5052-H32	MECH. DES.	15 May 71	MAMARONECK, NEW YORK	
FINISH	ELECT. DES.	DATE	BRKJT, PROT. COV. MTG.	
S404 YEL IRID	CHECKED	DATE		
	DRAWN	DATE		
		15 May 71		
SIZE		CODE IDENT. NO.	DWG NO.	ISSUE
A		82679	MS5961	Ø
SCALE		SHEET	OF	

**NOTICE TO PERSONS RECEIVING THIS DRAWING**

THE TECHNICAL MATERIEL CORPORATION claims proprietary right in the material disclosed hereon. This drawing is issued in confidence for engineering information only and may not be reproduced or used to manufacture anything shown hereon without permission from THE TECHNICAL MATERIEL CORPORATION to the user. This drawing is loaned for mutual assistance and is subject to recall at any time.