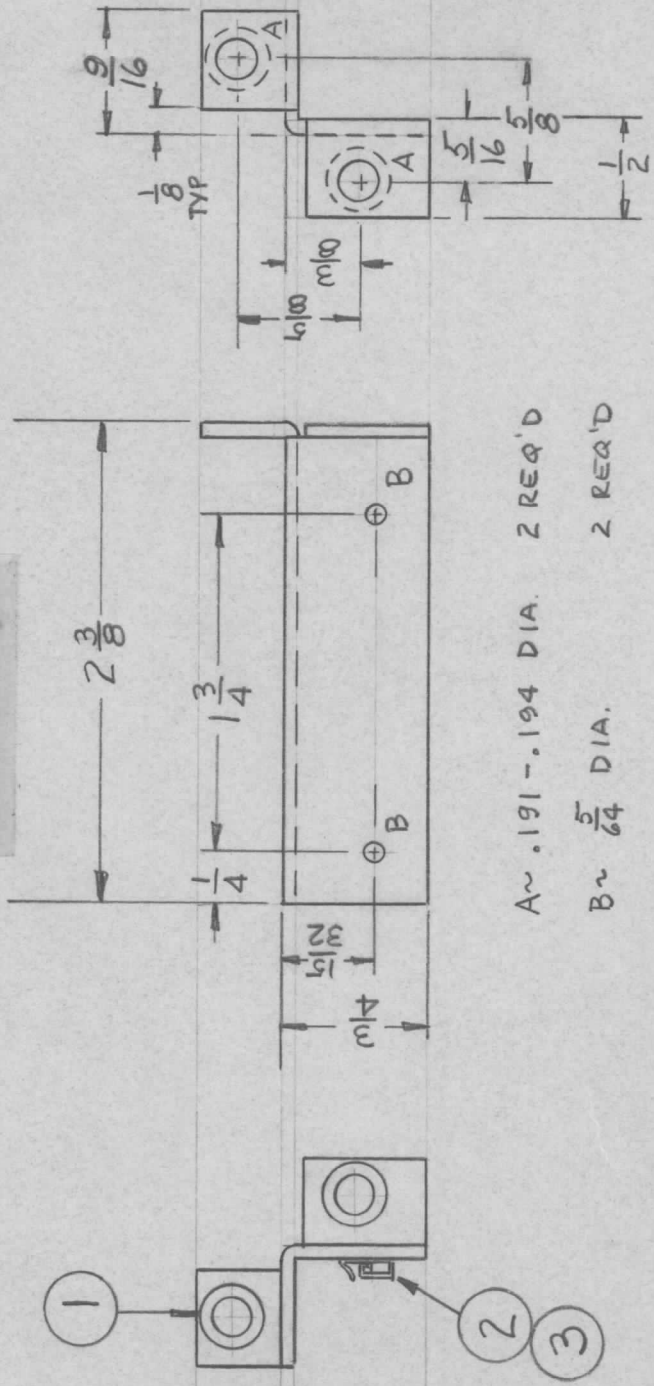


APPLICATION			REVISIONS						
QTY	MODEL USED ON	ASS'Y NO.	LTR	DESCRIPTION	DATE	E.M.N.NO	DRAFT	CHKD	APPD
1	HFLA-1K	AP151	Ø	ORIGINAL RELEASE	7/27/71		Ø		3.86

MARK TMC PART NUMBER
1/8 HIGH GOTHIC WITH LATEST
REVISION LETTER



A ~ .191 - .194 DIA. 2 REQ'D
B ~ 5/64 DIA. 2 REQ'D

- UNLESS OTHERWISE SPECIFIED:
1. USE MATERIAL THICKNESS FOR MAXIMUM RADIUS ON ALL BENDS.
 2. ALL ANGULAR BENDS 90 DEGREES.
 3. REMOVE ALL BURRS AND SHARP EDGES.
 4. MOUNT INSERTS AFTER FINISHING.

MS5955-1	AS SHOWN
MS5955-2	OPPOSITE HAND

2	3	EY100-5	EYELET, FLAT FLANGE	B
1	2	CU157-2	RET, PC BD	B
2	1	NT129-0632-4	NUT, PLN, SPLINE	A
REQ'D ITEM	PART NUMBER	DESCRIPTION	SYM.	

LIST OF MATERIAL		THE TECHNICAL MATERIEL CORP.	
BUDETTI		MAMARONECK, NEW YORK	
FINAL APPROVAL	<i>[Signature]</i>	DATE	157 Aug 71
MECH. DES.	<i>[Signature]</i>	DATE	157 Aug 71
ELECT. DES.		DATE	
CHECKED		DATE	
DRAWN	<i>[Signature]</i>	DATE	31 Aug 71
MATERIAL .064		BRKT, MTG, PC BD	
ALUM 5052-H32			
FINISH S404 YEL IR1D			

SIZE	CODE IDENT. NO.	DWG NO.	ISSUE
A	82679	MS 5955	Ø
SCALE		SHEET	OF

NOTICE TO PERSONS RECEIVING THIS DRAWING
THE TECHNICAL MATERIEL CORPORATION claims proprietary right in the material disclosed hereon. This drawing is issued in confidence for engineering information only and may not be reproduced or used to manufacture anything shown hereon without permission from THE TECHNICAL MATERIEL CORPORATION to the user. This drawing is loaned for mutual assistance and is subject to recall at any time.