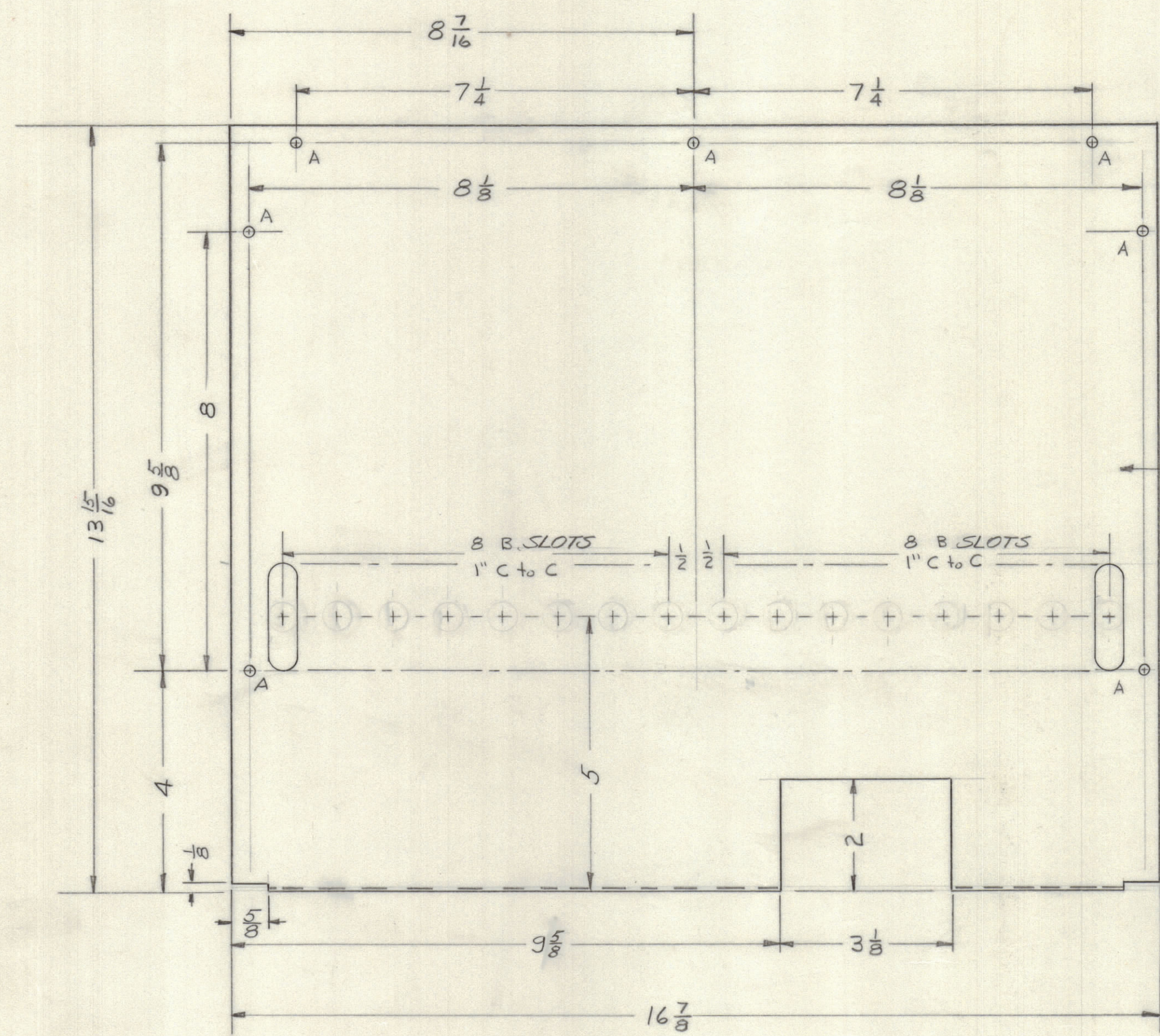


REVISIONS							
E.M.N.NO	DRAFT	CHKD	ZONE	LTR	DESCRIPTION	DATE	APPROVED
	CV			Ø	ORIGINAL RELEASE FOR PRODUCTION	5/15/71	P.E.A.
20539	GE			A	B' SLOTS WERE HOLES	2/17/72	SM



A ~ 11/64 DIA 7 REQ'D  
 B ~ 1/2 X 2 SLOT 16 REQ'D

MARK TMC PART NUMBER  
 1/8 HIGH GOTHIC WITH LATEST  
 REVISION LETTER

REF: LD 2447

- UNLESS OTHERWISE SPECIFIED:
- USE MATERIAL THICKNESS FOR MAXIMUM RADIUS ON ALL BENDS.
  - ALL ANGULAR BENDS 90 DEGREES.
  - REMOVE ALL BURRS AND SHARP EDGES.
  - MOUNT INSERTS AFTER FINISHING.

1	HFLA-1K	AP151
QTY / UNIT	MODEL USED ON	ASS'Y NO.
APPLICATION		
	CODE	
NOTICE TO PERSONS RECEIVING THIS DRAWING		
THE TECHNICAL MATERIEL CORPORATION claims proprietary right in the material disclosed hereon. This drawing is issued in confidence for engineering information only and may not be reproduced or used to manufacture anything shown hereon without permission from THE TECHNICAL MATERIEL CORPORATION to the user. This drawing is loaned for mutual assistance and is subject to recall at any time.		

UNLESS OTHERWISE SPECIFIED  
 DIMENSIONS ARE IN INCHES  
 AND INCLUDE CHEMICALLY APPLIED  
 OR PLATED FINISHES

TOLERANCES ON

DECIMALS	FRACTIONS
.X ± .05	± 1/64
.XX ± .01	ANGLES
.XXX ± .005	± 0° -30'

MATERIAL .064 ALUM  
 5052-H32

FINISH  
 S404 VEL IRID

QTY. REQ.	ITEM	PART NO.	DESCRIPTION	SYMBOL
BUDETTI LIST OF MATERIAL				
FINAL APPROVAL		DATE	THE TECHNICAL MATERIEL CORP. MAMARONECK, NEW YORK	
MECH. DES.		DATE		
ELECT. DES.		DATE		
CHECKED		DATE		
DRAWN		DATE	COVER TOP	
DRAWN				
SIZE	CODE	IDENT NO.	DWG NO.	ISSUE
C	82679	MS 5954	A	
SCALE			SHEET	OF

MS5954 A B C D