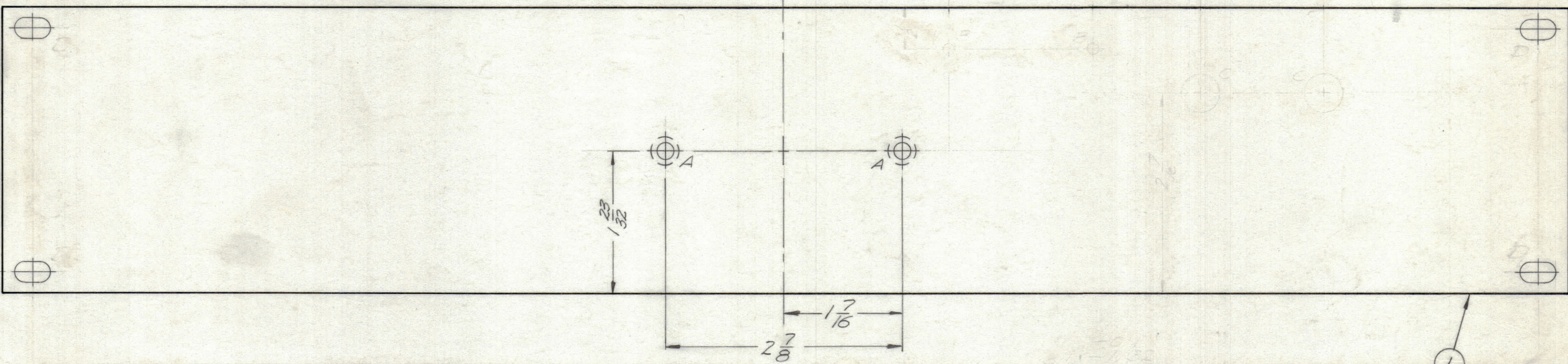


ENGINEERING SKETCH NOT FOR PRODUCTION

REVISIONS						
ZONE	LTR	DESCRIPTION	DATE	E.M.N.NO	DRAFT	CHKD APPD
		ORIGINAL RELEASE FOR PRODUCTION				



HOLE	DESCRIPTION	REQ.
A	.196 DIA. & C'SINK TO .390 DIA. REAR	2
B	9/64 DIA.	2
C	1/8 DIA.	2
D	SEE DETAIL A	4

MACHINING ALL EDGES.
 1. MILL ALL EDGES.
 2. HOLES MUST BE DRILLED UNLESS OTHERWISE SPECIFIED.
 3. LATERAL BOW OF PANEL MUST BE KEPT TO .031 TOLERANCE. LEFT TO .02 TOLERANCE.
 4. PANEL MUST BE FREE OF ALL MACHINING MARKS, GOUGES AND SCRATCHES. MARK EDGES IF NECESSARY SAND FRONT OF PANEL WITH NO. 120 GRIT SANDPAPER.

FINISH NOTES:

- S404 - IRIDITE 14-2 AL-COAT.
- S114 - ZINC CHROMATE PRIMER } FRONT AND
- S115 - SMOOTH GRAY ENAMEL } EDGES ONLY

OR
 PRIME AND PAINT PER CUSTOMER'S SPECIFICATIONS

QTY / UNIT	RAR-2	RAK135-6
	MODEL USED ON	ASSY NO.
APPLICATION		
	CODE	
<small>NOTICE TO PERSONS RECEIVING THIS DRAWING</small> <small>THE TECHNICAL MATERIEL CORPORATION claims proprietary right in the material disclosed herein. This drawing is issued in confidence for engineering information only and may not be reproduced or used to manufacture anything shown herein without permission from THE TECHNICAL MATERIEL CORPORATION to the user. This drawing is loaned for mutual assistance and is subject to recall at any time.</small>		

UNLESS OTHERWISE SPECIFIED DIMENSIONS ARE IN INCHES AND INCLUDE CHEMICALLY APPLIED OR PLATED FINISHES

TOLERANCES ON

DECIMALS	FRACTIONS
.X ± .05	± 1/64
.XX ± .01	ANGLES
.XXX ± .005	± 0° -30'

MATERIAL 2024-T3
 .187 THK. ALUMINUM
 FINISH AS NOTED

1	1	MS157-2	PANEL STANDARD 19"	
QTY. REQ.	ITEM	PART NO.	DESCRIPTION	SYMBOL
S. DE MARCO LIST OF MATERIAL				
FINAL APPROVAL		DATE	THE TECHNICAL MATERIEL CORP. MAMARONECK, NEW YORK FRONT PANEL RAR-2	
MECH. DES.		DATE		
ELECT. DES.		DATE		
CHECKED		DATE		
DRAWN		DATE		
MATERIAL			SIZE	CODE IDENT. NO.
FINISH			C	82679
			DWG NO. MS 5940	
			SCALE 1:1	ISSUE
			SHEET	OF