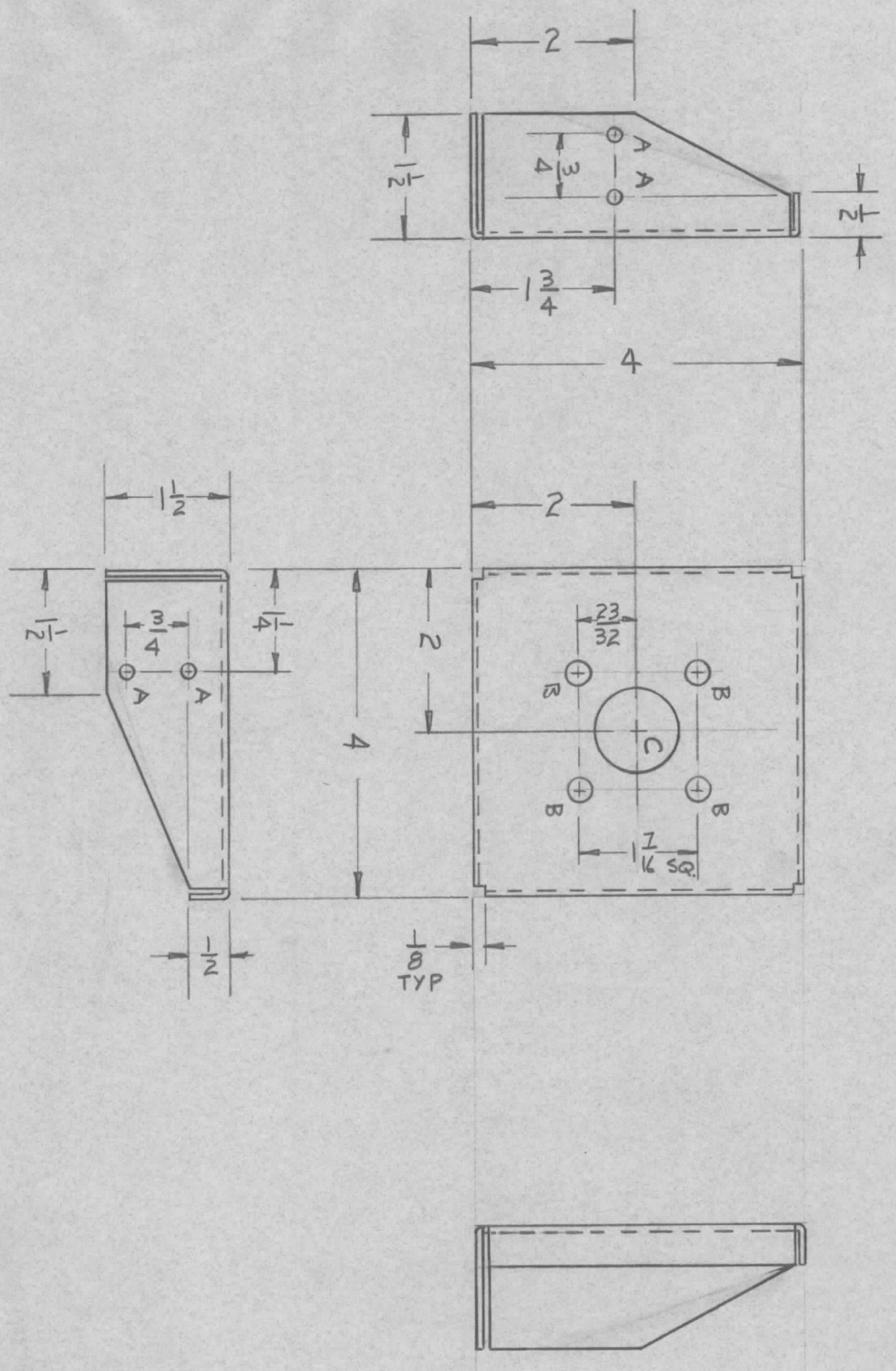


REVISIONS							
ZONE	LTR	DESCRIPTION	DATE	E.M.N. NO	DRAFT	CHKD	APPD
Ø		ORIGINAL RELEASE	9/5/71		Ø		Ø



MARK TMC PART NUMBER
1/8 HIGH GOTHIC WITH LATEST
REVISION LETTER



A ~ 1/4 DIA. 4 REQ'D
 B ~ 3/8 DIA. 4 REQ'D
 C ~ 1" DIA. 1 REQ'D

REQ'D ITEM	PART NUMBER	DESCRIPTION	SYM.
LIST OF MATERIAL			

THE TECHNICAL MATERIEL CORP.
MAMARONECK, NEW YORK

BRKT, OUTPUT CONN

FINAL APPROVAL	DATE	MECH. DES.	DATE	ELECT. DES.	DATE	CHECKED	DATE	DRAWN	DATE	SIZE	CODE IDENT. NO.	DWG. NO.	SCALE	SHEET	OF	ISSUE
<i>[Signature]</i>	5/26/71	<i>[Signature]</i>	5/26/71					<i>[Signature]</i>	3/26/71	B	82679	MS 5939				Ø

QTY / UNIT	1	MODEL USED ON	HFTM-1K5	ASSY. NO.	BHA 455
APPLICATION		CODE			

- UNLESS OTHERWISE SPECIFIED:
1. USE MATERIAL THICKNESS FOR MAXIMUM RADIUS ON ALL BENDS.
 2. ALL ANGULAR BENDS 90 DEGREES.
 3. REMOVE ALL BURRS AND SHARP EDGES.
 4. MOUNT INSERTS AFTER FINISHING.

NOTICE TO PERSONS RECEIVING THIS DRAWING
THE TECHNICAL MATERIEL CORPORATION claims proprietary right in the material disclosed hereon. This drawing is issued in confidence for engineering information only and may not be reproduced or used to manufacture anything shown hereon without permission from THE TECHNICAL MATERIEL CORPORATION to the user. This drawing is loaned for mutual assistance and is subject to recall at any time.

DECIMALS	FRACTIONS	TOLS.	ANGLES
.X ± .05	1/64		° .30'
.XX ± .01			
.XXX ± .005			

MATERIAL .064
 ALUM 5052-H32
 FINISH S404 YEL IRID