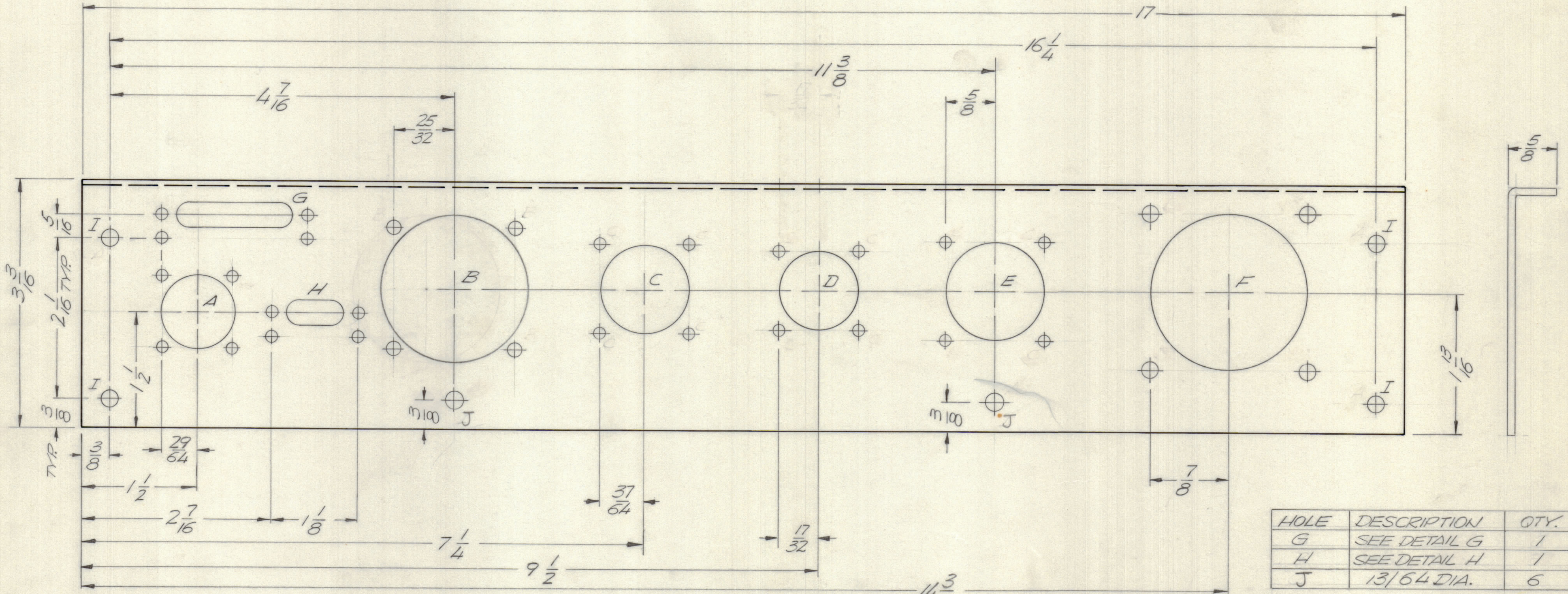
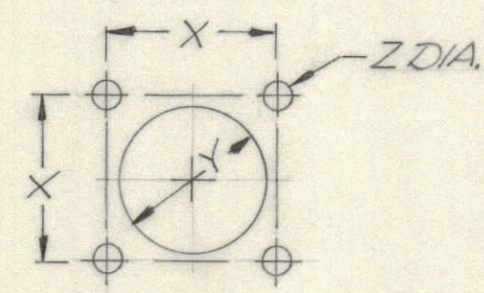
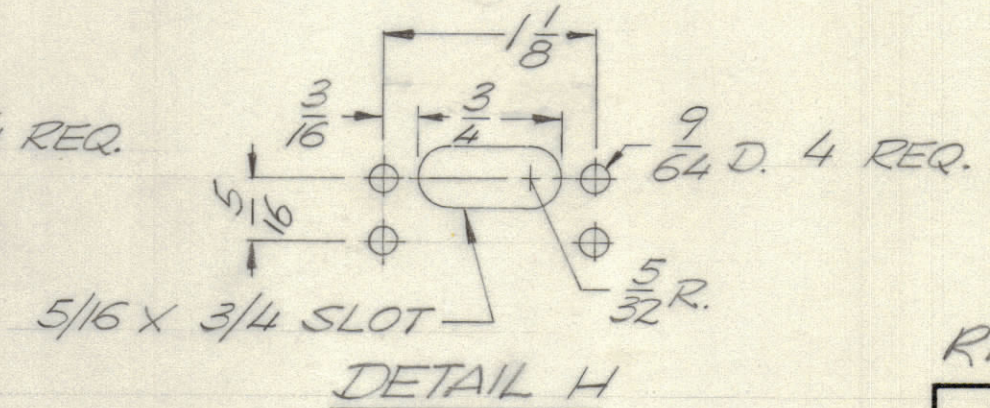
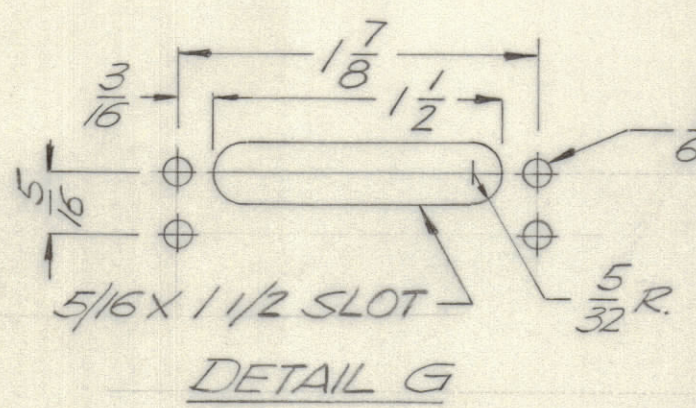


| REVISIONS |       |      |      |     |                                 |        |          |
|-----------|-------|------|------|-----|---------------------------------|--------|----------|
| E.M.N.NO  | DRAFT | CHKD | ZONE | LTR | DESCRIPTION                     | DATE   | APPROVED |
|           | CU    |      |      | Ø   | ORIGINAL RELEASE FOR PRODUCTION | 3/9/71 | P.E.G.   |



| HOLE | DESCRIPTION  | QTY. |
|------|--------------|------|
| G    | SEE DETAIL G | 1    |
| H    | SEE DETAIL H | 1    |
| J    | 13/64 DIA.   | 6    |

| DETAIL | X      | Y       | Z    |
|--------|--------|---------|------|
| A      | 29/32  | 15/16   | 5/32 |
| B      | 1 9/16 | 1 13/16 | 3/16 |
| C      | 1 5/32 | 1 3/16  | 5/32 |
| D      | 1 1/16 | 1 1/16  | 5/32 |
| E      | 1 1/4  | 1 5/16  | 5/32 |
| F      | 1 3/4  | 2       | 3/16 |



- UNLESS OTHERWISE SPECIFIED:
- USE MATERIAL THICKNESS FOR MAXIMUM RADIUS ON ALL BENDS.
  - ALL ANGULAR BENDS 90 DEGREES.
  - REMOVE ALL BURRS AND SHARP EDGES.
  - MOUNT INSERTS AFTER FINISHING.

|  |               |           |
|--|---------------|-----------|
| AX5128   |               |           |
| QTY / UNIT   | MODEL USED ON | ASS'Y NO. |
| APPLICATION  |               |           |
| CODE   |               |           |
| <p>NOTICE TO PERSONS RECEIVING THIS DRAWING</p> <p>THE TECHNICAL MATERIEL CORPORATION claims proprietary right in the material disclosed hereon. This drawing is issued in confidence for engineering information only and may not be reproduced or used to manufacture anything shown hereon without permission from THE TECHNICAL MATERIEL CORPORATION to the user. This drawing is loaned for mutual assistance and is subject to recall at any time.</p> |               |           |

REF LD 2441

|   |                  |
|---|------------------|
| UNLESS OTHERWISE SPECIFIED DIMENSIONS ARE IN INCHES AND INCLUDE CHEMICALLY APPLIED OR PLATED FINISHES |                  |
| TOLERANCES ON DECIMALS  | FRACTIONS        |
| .X ± .05  | ± 1/64           |
| .XX ± .01   | ANGLES ± 0° -30' |
| .XXX ± .005   |                  |
| MATERIAL 5052-H32 .081 AL AL  |                  |
| FINISH 5052-H32 YELL IRIDITE  |                  |

| QTY. REQ.   | ITEM  | PART NO.  | DESCRIPTION | SYMBOL |
|---|-------|-----------|-------------|--------|
| S. DE MARCO LIST OF MATERIAL                      |       |           |             |        |
| THE TECHNICAL MATERIEL CORP. MAMARONECK, NEW YORK |       |           |             |        |
| PANEL, REAR                                       |       |           |             |        |
| SIZE  | CODE  | IDENT NO. | DWG NO.     | ISSUE  |
| C   | 82679 | MS5937    |             | Ø      |
| SCALE 1:1   |       |           | SHEET OF    |        |

MS5937