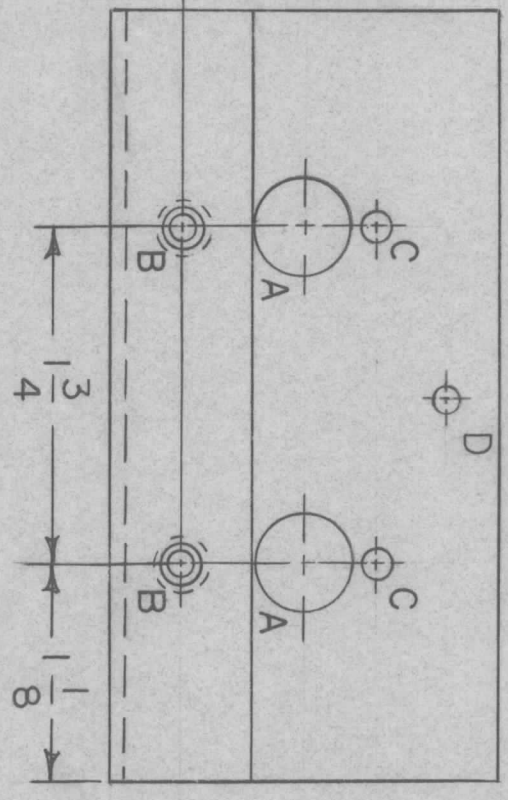
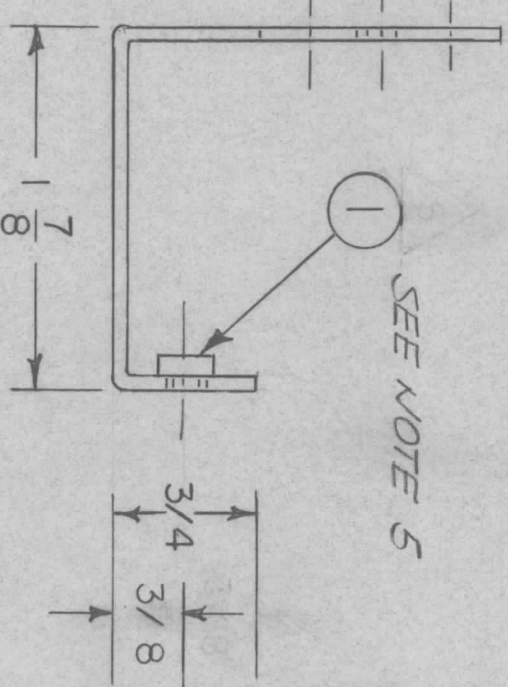
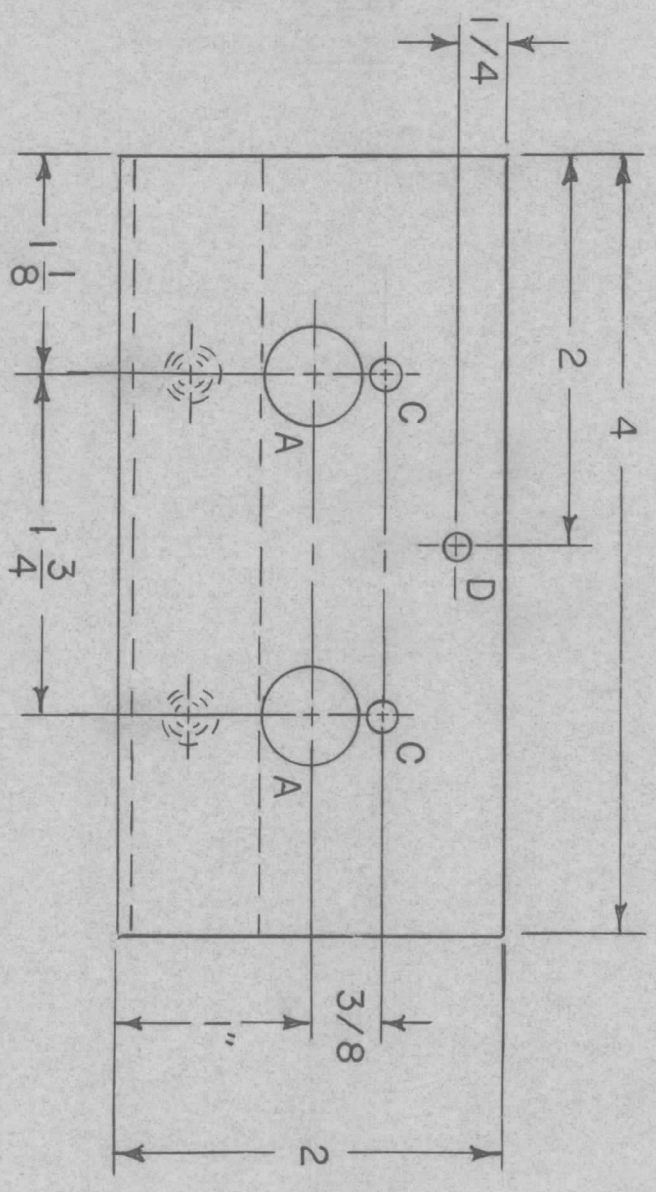


HOLE	DESCRIPTION	REQD
A	1/2 DIA	2
B	.191 .194 DIA	2
C	5/32 DIA	2
D	9/64	1

REVISIONS							
ZONE	LTR	DESCRIPTION	DATE	E.M.N.NO	DRAFT	CHKD	APPD
	X	EXP RELEASE	1-25-71		RF		
	Ø	RELEASE FOR PROD	3/29/71		RF		DCB



NOTES:

- UNLESS OTHERWISE SPECIFIED:
1. USE MATERIAL THICKNESS FOR MAXIMUM RADIUS ON ALL BENDS.
 2. ALL ANGULAR BENDS 90 DEGREES.
 3. REMOVE ALL BURRS AND SHARP EDGES.
 4. MOUNT INSERTS AFTER FINISHING.
 5. MOUNT IN 2 "B" HOLES

(REF: LD 2440)

REQ'D	ITEM	PART NUMBER	DESCRIPTION	SYM.
2	1	NT 129-632-4	NUT, ROUND, SWAGE TYPE	B

LIST OF MATERIAL			
THE TECHNICAL MATERIEL CORP.			
MAMARONECK, NEW YORK			
BRACKET, SUPPORT			
DATE	3-30-71	DATE	1-25-71
MECH. DES.	R. U. P.	DATE	1-25-71
ELECT. DES.		DATE	
CHECKED		DATE	
DRAWN	R. U. P.	DATE	1-25-71
SIZE	B	CODE IDENT. NO.	82679
DWG. NO.			MS 5936
SCALE	1/1	SHEET	1 OF 1
ISSUE	Ø		

QTY / UNIT	1	MODEL USED ON	AX 5128	ASS'Y NO.	
APPLICATION					
CODE					

NOTICE TO PERSONS RECEIVING THIS DRAWING

THE TECHNICAL MATERIEL CORPORATION claims proprietary right in the material disclosed hereon. This drawing is issued in confidence for engineering information only and may not be reproduced or used to manufacture anything shown hereon without permission from THE TECHNICAL MATERIEL CORPORATION to the user. This drawing is loaned for mutual assistance and is subject to recall at any time.