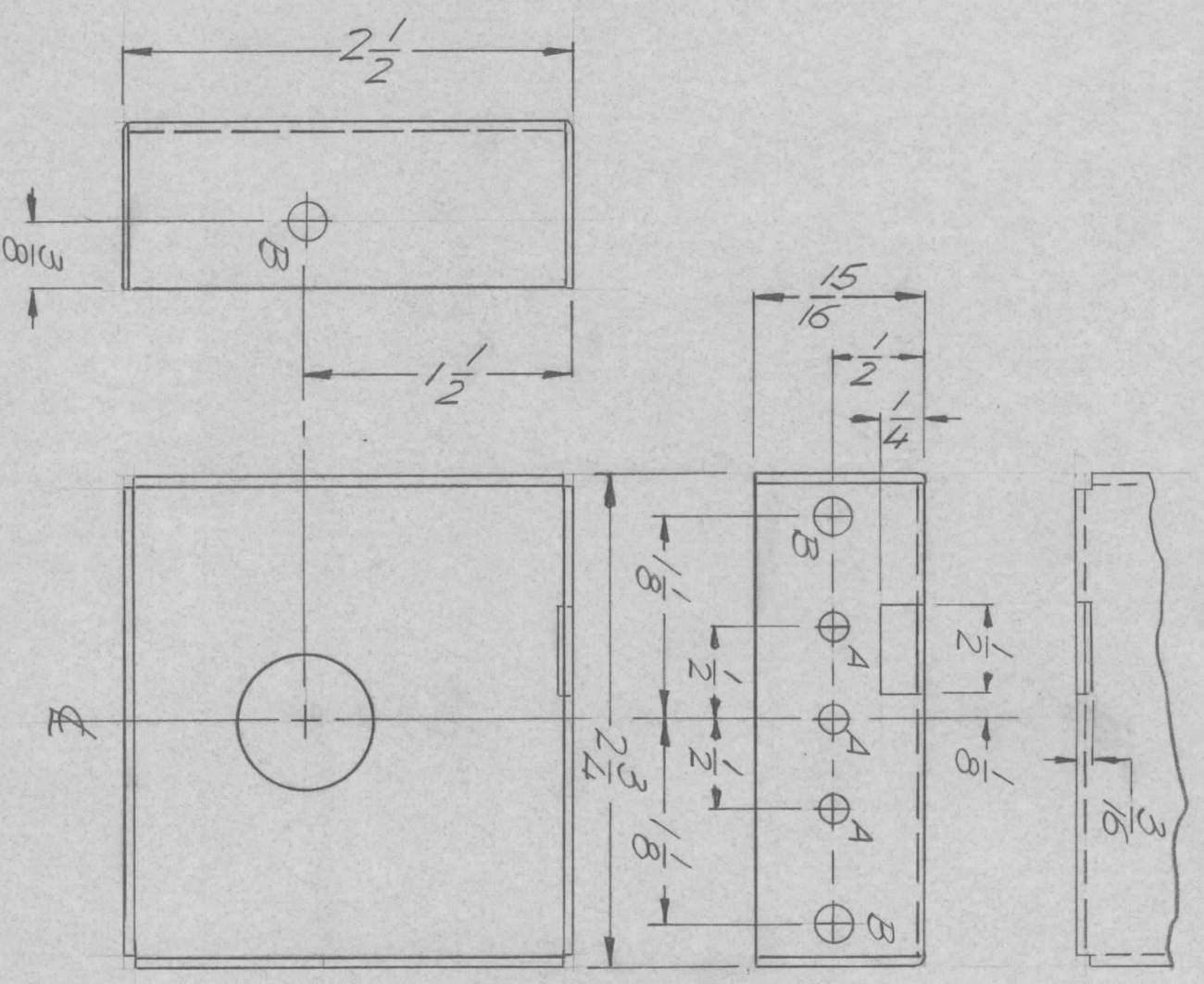


ENGINEERING SKETCH FOR MANUFACTURE

REVISIONS							
ZONE	LTR	DESCRIPTION	DATE	E.M.N. NO.	DRAFT	CHKD	APPD
	Ø	ORIG RELEASE FOR PROD	11/2/71		CV		Q.E.B.
A		ADD OBSOLETE NOTE	3/27/72	20572	GE	EQ	EQ

HOLE	DESCRIPTION	REQ.
A	5/32 DIA.	3
B	13/64 DIA.	3
C	3/4 DIA.	1



1. USE MATERIAL THICKNESS FOR MAXIMUM RADIUS ON ALL BENDS.
2. ALL ANGULAR BENDS 90 DEGREES.
3. REMOVE ALL BURRS AND SHARP EDGES.
4. MOUNT INSERTS AFTER FINISHING.

QTY / UNIT	1	MODEL USED ON	HEFTA-10K	ASS'Y NO.	AX 5114
APPLICATION		CODE			

UNLESS OTHERWISE SPECIFIED DIMENSIONS ARE IN INCHES AND INCLUDE CHEMICALLY APPLIED OR PLATED FINISHES

DECIMALS	TOLS.	FRACTIONS	ANGLES
.X ± .05		1/64	
.XX ± .01			0° - 30'
.XXX ± .005			

MATERIAL 051 ALUM
5052 H 32
FINISH YEL. IRIDITE

FINAL APPROVAL		DATE
MECH. DES.	<i>[Signature]</i>	11/21
ELECT. DES.		
CHECKED		
DRAWN	GE	11/71

LIST OF MATERIAL

THE TECHNICAL MATERIEL CORP.
MAMARONECK, NEW YORK

REQ'D ITEM	PART NUMBER	DESCRIPTION	SYM.
<p>OBSOLETE REPLACED BY BX234</p>			
SIZE	CODE IDENT. NO.	DWG NO.	ISSUE
B	82679	MS 5933	A
SCALE	1:1	SHEET	OF

BOX SHIELDING

NOTICE TO PERSONS RECEIVING THIS DRAWING
THE TECHNICAL MATERIEL CORPORATION claims proprietary right in the material disclosed hereon. This drawing is issued in confidence for engineering information only and may not be reproduced or used to manufacture anything shown hereon without permission from THE TECHNICAL MATERIEL CORPORATION to the user. This drawing is loaned for mutual assistance and is subject to recall at any time.